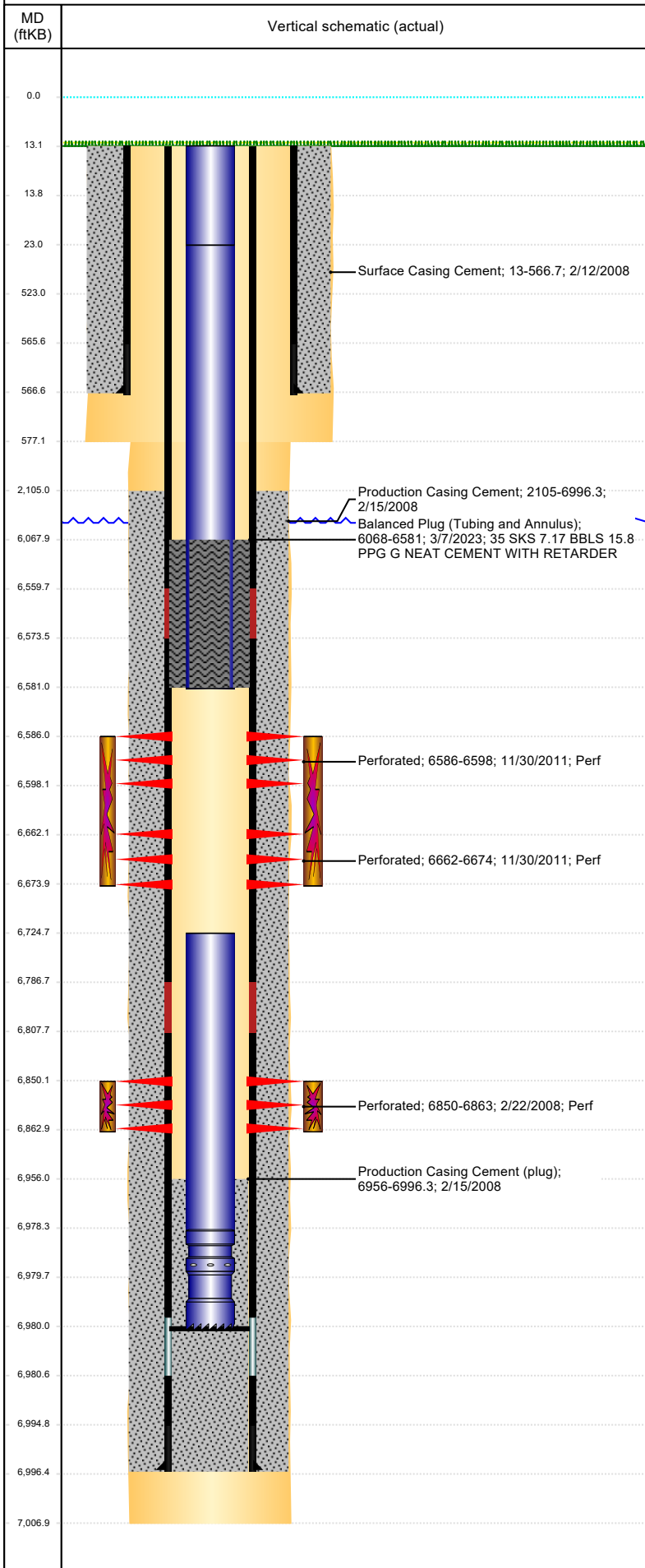




P&A Wellbore For State

Well Name: RYANN STATE C21-27

Land, Original Hole, 5/4/2023 1:08:34 PM



Well Header										
Surface UWI 0512325464			Business Unit Rockies		Gov Auth Dist			Prod Tree Loc Land		
Orig. KB to Gnd (ft) 13.00		Original Spud Date 2/12/2008		Abandon Date		Well Sub-Status TA			High Pres N	
Comment										
Surface Location (Congressional)										
Quarter 3 SE	Quarter 4 SE	Section 16	Township 4	Twnshp N N	Range 64	Rng E/W W	Latitude (°) 40.305664162	Longitude (°) -104.550359362		
Wellbore Sections										
Section Des			Hole Size (in)			Act Top (ftKB)		Act Btm (ftKB)		
SURFACE			12 1/4			13.0		577.0		
PRODUCTION			7 7/8			577.0		7,007.0		
Casing Strings										
Csg Des			Run Date		OD (in)	Wt/Len (lb/ft)	Grade	Top Depth (MD) (ftKB)	Set Depth (MD) (ftKB)	
Surface			2/12/2008		8 5/8	24.00	J-55	13	566.7	
Production Casing			2/15/2008		4 1/2	11.60	M-80	0	6996.3	
Cement										
Des					Start Date		Top (ftKB)		Btm (ftKB)	
Surface Casing Cement					2/12/2008		13.0		566.7	
Production Casing Cement					2/15/2008		2,105.0		6,996.3	
Balanced Plug (Tubing and Annulus)					3/7/2023		6,068.0		6,581.0	
Zone Statuses										
Zone Name		Status Date	Status	Fluid Type	Job				Prod Method	
NIOBRARA		12/9/2011	PR		RECOMPLETION, 11/28/2011 14:30					
NIOBRARA		3/7/2023	Closed		Abandon Well - Temporary, 12/28/2022 00:00					
CODELL		5/9/2017	SI							
CODELL		3/7/2023	Closed		Abandon Well - Temporary, 12/28/2022 00:00					
Perforation Data										
Linked Zone			Explosive Type	Entered Shot Total	Top (ftKB)		Btm (ftKB)		Date	
NIOBRARA, Original Hole				24	6,586.0		6,598.0		11/30/2011	
NIOBRARA, Original Hole				24	6,662.0		6,674.0		11/30/2011	
CODELL, Original Hole				52	6,850.0		6,863.0		2/22/2008	
Stimulation Intervals										
Zone				Start Date		Top (ftKB)		Btm (ftKB)		
NIOBRARA, Original Hole				12/8/2011		6,586.0		6,674.0		
CODELL, Original Hole				3/20/2008		6,850.0		6,863.0		
Other In Hole										
Run Date		Des			Make		OD (in)	Top (ftKB)	Btm (ftKB)	
Logs										
Date		Type					Depth Top (MD) (ftKB)		Btm (ftKB)	
2/14/2008		Caliper/Comp. Density/Neutron/GR/SP/ML					2,600		6,985.0	
2/14/2008		DIL/GR/SP/Caliper					567		7,005.0	
2/20/2008		CBL/CCL/GR					1,950		6,956.0	
3/17/2011		GYRO					10		6,720.0	
Plug Back Total Depths										
Date		Type		Com					PBTD (ftKB)	
11/29/2011		PLUG REMNANTS		C/O REMAINS OF PLUG & SCALE					6,980	
2/23/2012		PLUG REMNANTS							6,980	