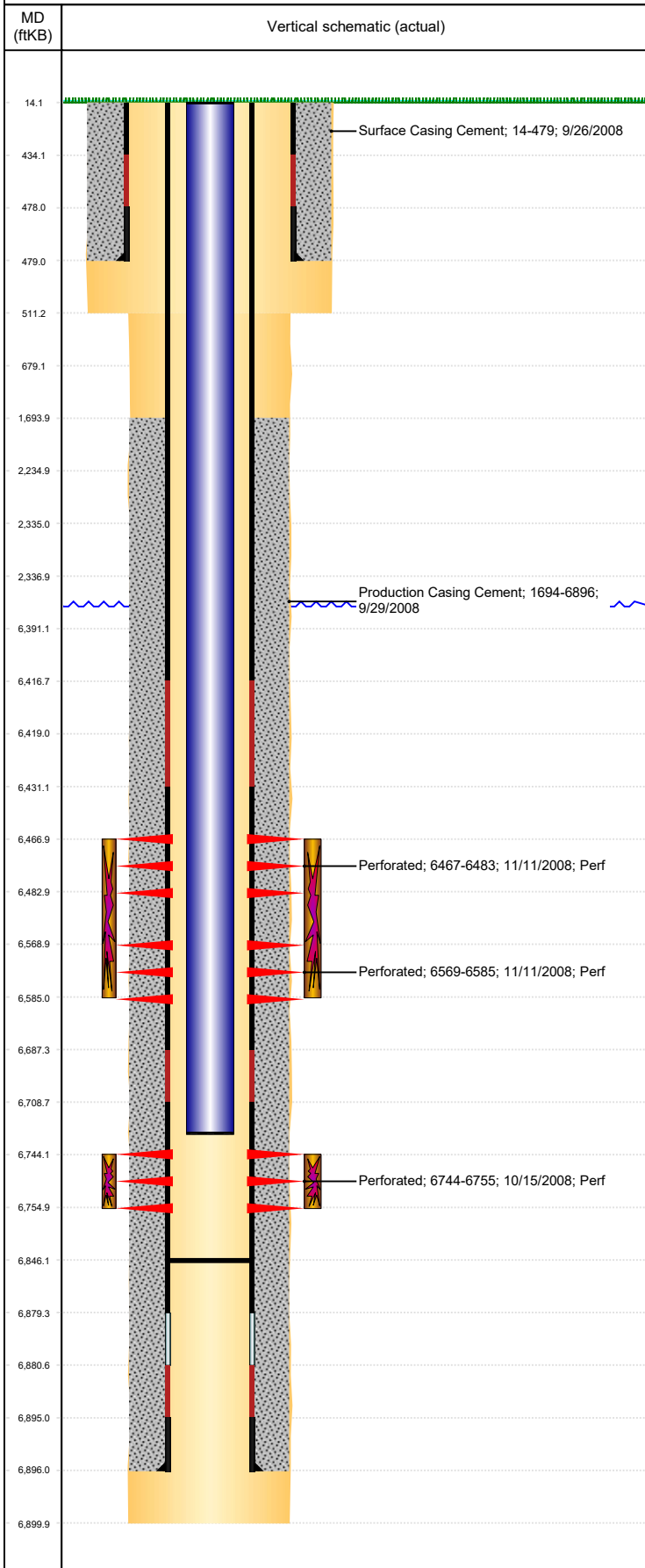




# P&A Wellbore For State

Well Name: BROWN USX AA03-08

Land, Original Hole, 5/2/2023 10:58:07 AM



Well Header									
Surface UWI 0512328146			Business Unit Rockies			Gov Auth Dist		Prod Tree Loc Land	
Orig. KB to Gnd (ft) 14.00		Original Spud Date 9/26/2008		Abandon Date		Well Sub-Status TA (AT SURFACE)			High... N
Comment									
Surface Location (Congressional)									
Qtr 3 SE	Qtr 4 NE	Section 3	Twnshp 6	Twنش... N	Range 63	Rng E/... W	Latitude (°) 40.51754057 4	Longitude (°) -104.415496056	
Wellbore Sections									
Section Des			Hole Size (in)			Act Top (ftKB)		Act Btm (ftKB)	
SURFACE			12 1/4			14.0		511.0	
PRODUCTION			7 7/8			511.0		6,900.0	
Casing Strings									
Csg Des			Run Date	OD (in)	Wt/Len (lb/ft)	Grade	Top Depth (MD) (ftKB)	Set Depth (MD) (ftKB)	
Surface			9/26/2008	8 5/8	24.00	J-55	14	479	
Production Casing			9/29/2008	4 1/2	11.60	M-80	14.2	6896	
Cement									
Des				Start Date		Top (ftKB)		Btm (ftKB)	
Surface Casing Cement				9/26/2008		14.0		479.0	
Production Casing Cement				9/29/2008		1,694.0		6,896.0	
Zone Statuses									
Zone Name		Status Date	Status	Fluid Type	Job			Prod Method	
NIOBRARA		11/24/2008	PR	Water	DRILLING/COMPLETION - ORIGINAL, 9/26/2008...			Flowing Flowing	
NIOBRARA		1/6/2010	PR						
CODELL		1/6/2010	PR	Water					
CODELL		3/10/2017	SI						
Perforation Data									
Linked Zone			Explosive Type	Entered Shot Total	Top (ftKB)		Btm (ftKB)		Date
NIOBRARA, Original Hole			A	32	6,467.0		6,483.0		11/11/2008
NIOBRARA, Original Hole			B	32	6,569.0		6,585.0		11/11/2008
CODELL, Original Hole			01	44	6,744.0		6,755.0		10/15/2008
Stimulation Intervals									
Zone				Start Date		Top (ftKB)		Btm (ftKB)	
NIOBRARA, Original Hole				11/11/2008		6,467.0		6,585.0	
CODELL, Original Hole				11/11/2008		6,744.0		6,755.0	
Other In Hole									
Run Date	Des				Make	OD (in)	Top (ftKB)	Btm (ftKB)	
Logs									
Date		Type				Depth Top (MD) (ftKB)		Btm (ftKB)	
9/29/2008		Caliper/Comp. Density/Neutron/GR/SP/ML				2,640		6,895.0	
9/29/2008		DIL/GR/SP/Caliper				2,640		6,895.0	
10/13/2008		CBL/CCL/GR				1,580		6,866.0	
11/27/2012		GYRO				14		6,700.0	
Plug Back Total Depths									
Date		Type		Com				PBTD (ftKB)	
11/17/2008		PLUG REMNANTS		DRILL CIFT P W/ BLADE BIT AND CHASE DOWN W/ 224 JTS				6,873	
1/2/2014		FILL						6,846	