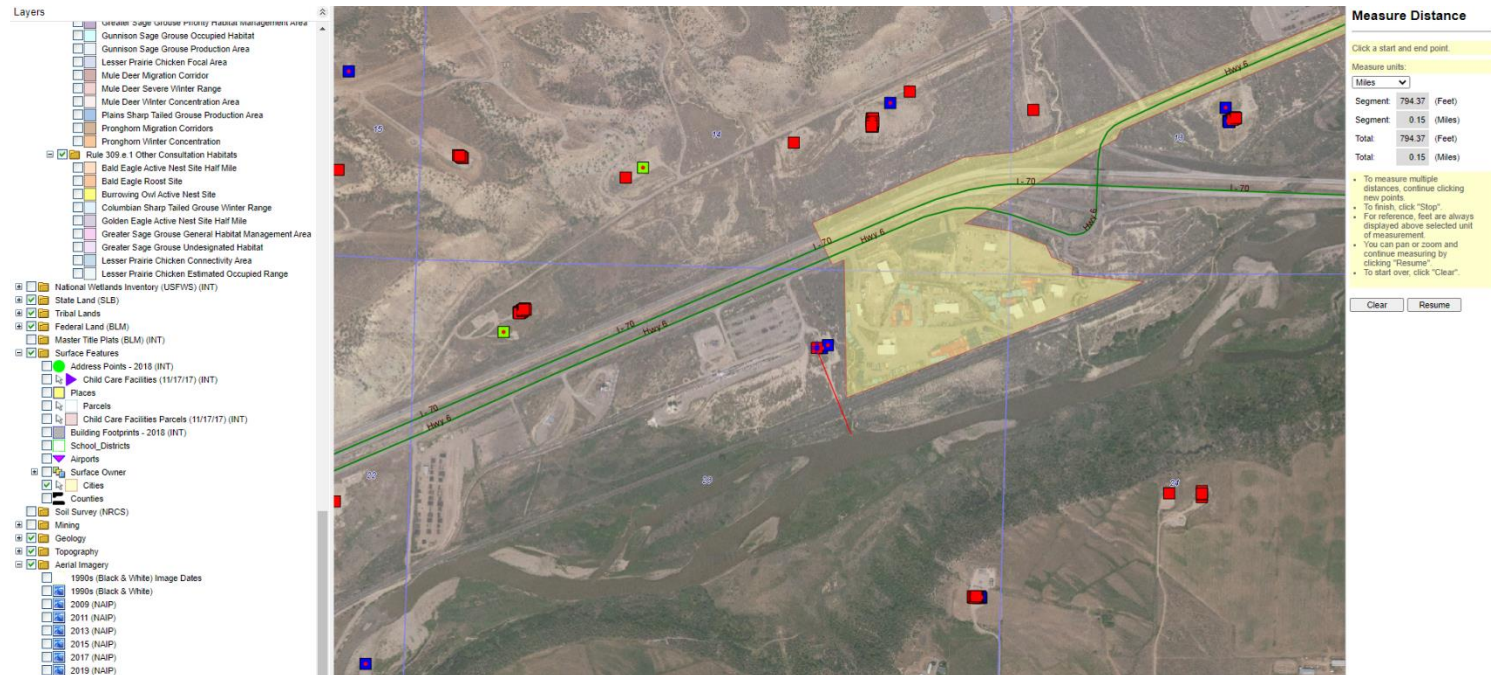


Storm Water Management and Erosion control

Location Name: CLOUGH 31-23H Pad

Location #: 323919



Location Overview: Location is approximately 264 yards from the Colorado River

Section/Township/Range: 23 6S94W



COLORADO
Oil & Gas Conservation
Commission

Department of Natural Resources

Storm water Management and Erosion control

Location Name: CLOUGH 31-23H Pad

Location #: 323919



North West corner of location.



North East corner of location.



South West corner of location.



South East corner of location.

Storm water Management and Erosion control

Location Name: CLOUGH 31-23H Pad

Location #: 323919



Photo # 6816 BMP's



Photo # 6817 BMP's

Storm water Management and Erosion control

Location Name: CLOUGH 31-23H Pad

Location #: 323919



Photo # 6815 BMP's