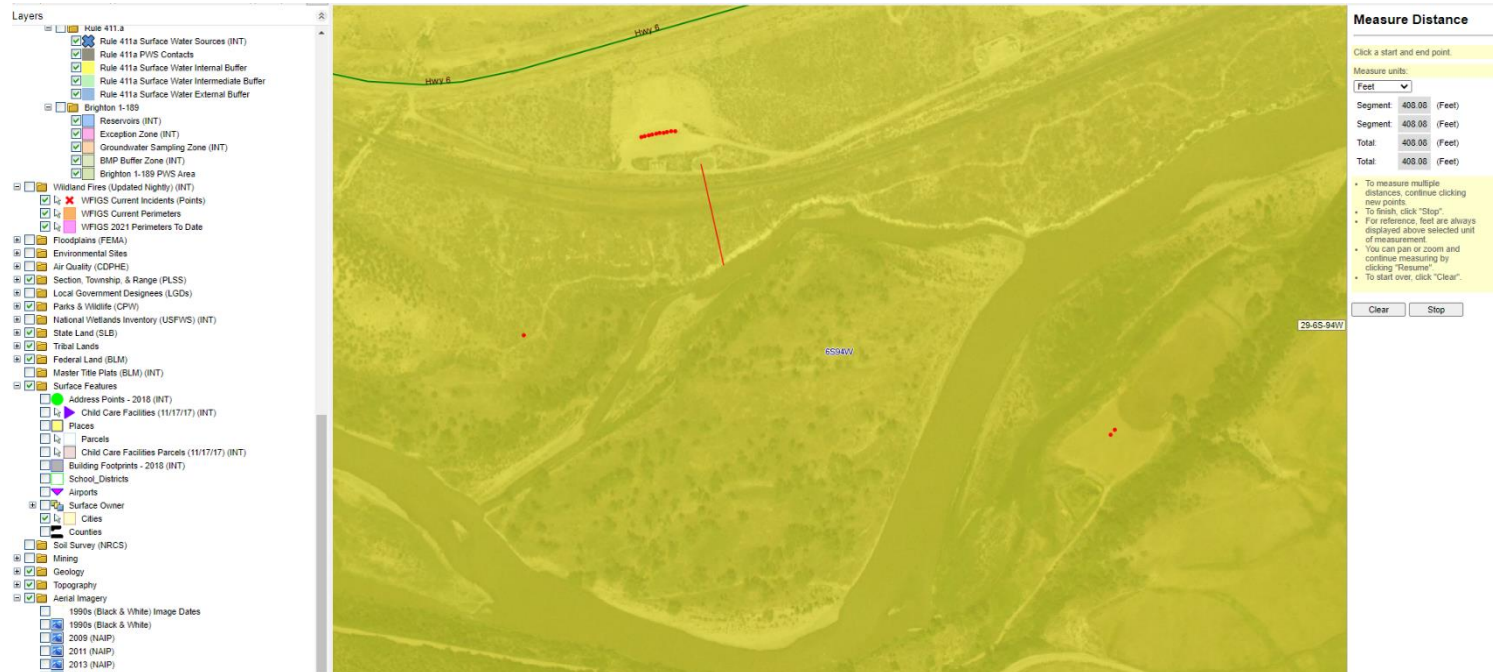


Storm Water Management and Erosion control

Location Name: RWF 22-29 pad

Location #: 335076



Location Overview: Location is approximately 140 yards from the Colorado River & is within a High Priority Habitat area.

Section/Township/Range: 29 6S94W



COLORADO
Oil & Gas Conservation
Commission

Department of Natural Resources

Stormwater Management and Erosion control

Location Name: RWF 22-29 pad

Location #: 335076



North West corner of location.



North East corner of location.



South West corner of location.



South East corner of location.



COLORADO
Oil & Gas Conservation
Commission
Department of Natural Resources

Stormwater Management and Erosion control

Location Name: RWF 22-29 pad

Location #: 335076



Photo # 2223 From Inspection 708900108 conducted on 03/13/2023 Culvert needs maintenance



Photo # 6669 Culvert needs maintenance