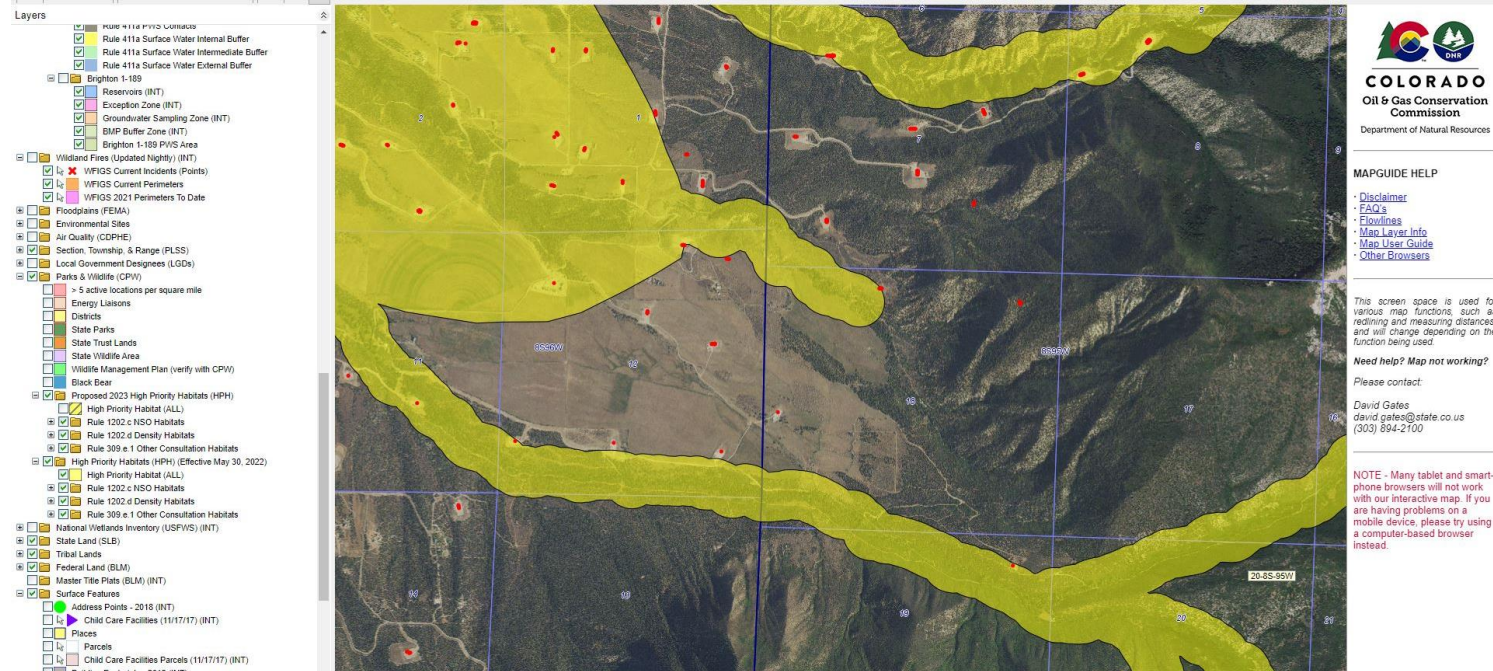


# Stormwater Management and Erosion control

## Location Name: CAERUS PICEANCE LLC SGV /12H PAD

### Location #: 312697



**Location Overview: Location is located on the edge of a High priority habitat area.**

**Section/Township/Range:**

**Stormwater Management and Erosion control**  
**Location Name: CAERUS PICEANCE LLC SGV /12H PAD**  
**Location #: 312697**



**Photo #9777 from entrance to location.**



**Photo #9778 From entrance to location.**



**Stormwater Management and Erosion control**  
**Location Name: CAERUS PICEANCE LLC SGV /12H PAD**  
**Location #: 312697**



**Photo #9781 Insufficient stockpiled soils BMPs.**



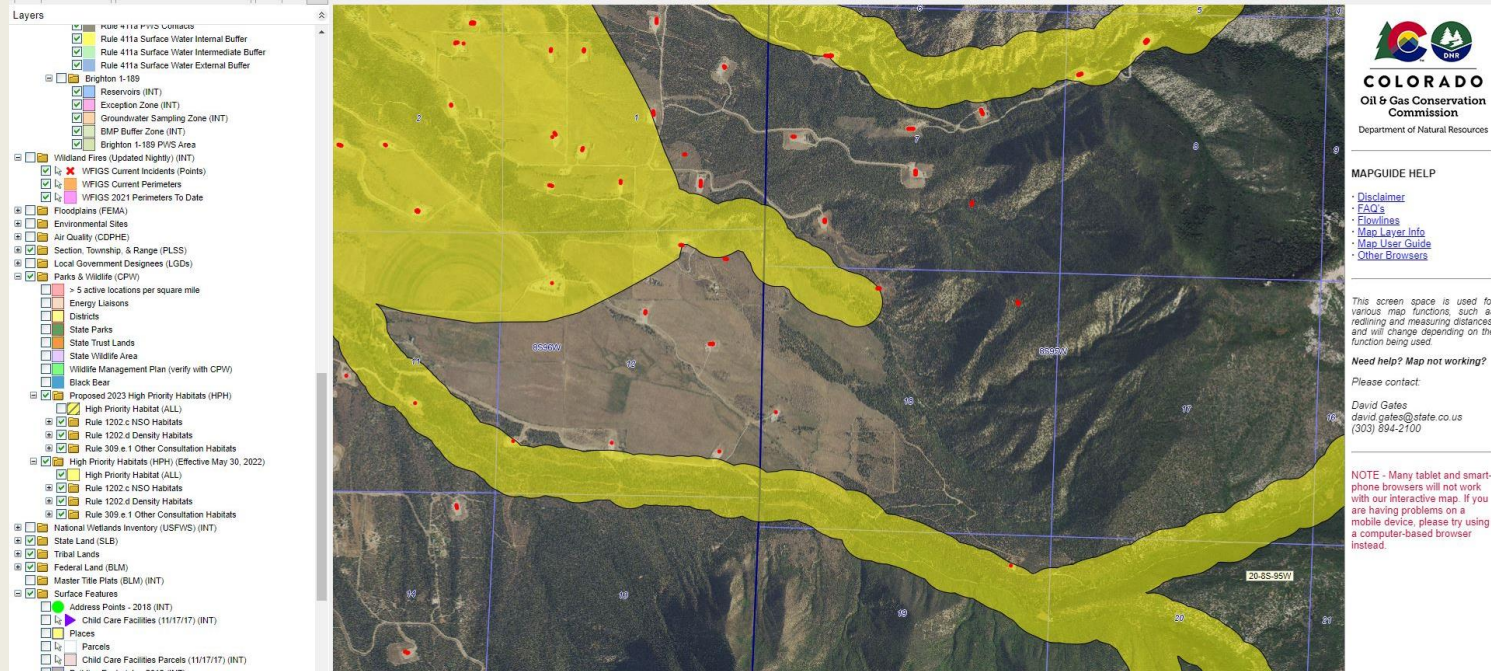
**Photo #9784 Insufficient stockpiled soils BMPs.**



# Stormwater Management and Erosion control

## Access Road/Assoc. Location Name: CAERUS PICEANCE LLC SGV /12H PAD

### Access Road/Assoc. Location #: 312697



Access Road overview: Access road is located on the edge of a high priority habitat area.

Section/Township/Range: 12 8S96W



**Stormwater Management and Erosion control**  
**Access Road/Assoc. Location Name: CAERUS PICEANCE LLC SGV /12H PAD**  
**Access Road/Assoc. Location #: 312697**



**Photo #9785 Access road lacks stabilization.**



**Photo #9786 Access road lacks stabilization.**



**Stormwater Management and Erosion control**  
**Access Road/Assoc. Location Name: CAERUS PICEANCE LLC SGV /12H PAD**  
**Access Road/Assoc. Location #: 312697**



**Photo #9788 Access road lacks stabilization.**



**Photo #9789 Insufficient tracking BMP at entrance to access roads.**