

**MULTI FINGER CALIPER
56 ARM**

Company	PDC Energy	Company	PDC Energy
Well	Steamboat 14N	Well	Steamboat 14N
Field	Wattenburg	Field	Wattenburg
County	Weld	County	Weld
State	CO	State	CO
Date	25-JAN-2023	Location:	API #: 05-123-51304 1528' FSL & 2432' FEL
Run Number	ONE	Permanent Datum	SEC 34 TWP 4N RGE 66W
Depth Driller	1660 FT	Log Measured From	KB
Depth Logger	1640 FT	Drilling Measured From	KB
Bottom Logged Interval	1638 FT	Elevation	KB
Top Log Interval	SURFACE		DF
Open Hole Size	12.25"		GL
Type Fluid	FRESH WATER		
Density / Viscosity	N/A		
Max. Recorded Temp.	83°F		
Estimated Cement Top	N/A		
Time Well Ready	ROA		
Time Logger on Bottom	13:25		
Equipment Number	24		
Location	Grealey		
Recorded By	G. L. Neck		
Witnessed By	T. Frogg		
			dsad012623
Borehole Record		Tubing Record	
Run Number	Bit	From	To
		Size	Weight
		From	From
			To
Casing Record	Size	Wd/Ft	Bottom
Surface String	9 5/8	36	1677 FT
Prod. String			
Production String			
Liner			

<<< Fold Here >>>

All interpretations are opinions based on inferences from electrical or other measurements and we cannot and do not guarantee the accuracy or correctness of any interpretation, and we shall not, except in the case of gross or willful negligence on our part, be liable or responsible for any loss, costs, damages, or expenses incurred or sustained by anyone resulting from any interpretation made by any of our officers, agents or employees. These interpretations are also subject to our general terms and conditions set out in our current Price Schedule.

Comments

WELL INFORMATION PROVIDED BY COMPANY REP

NO SIGNIFICANT WEAR OR OVALITIES SHOWN THROUGH LOGGED INTERVAL

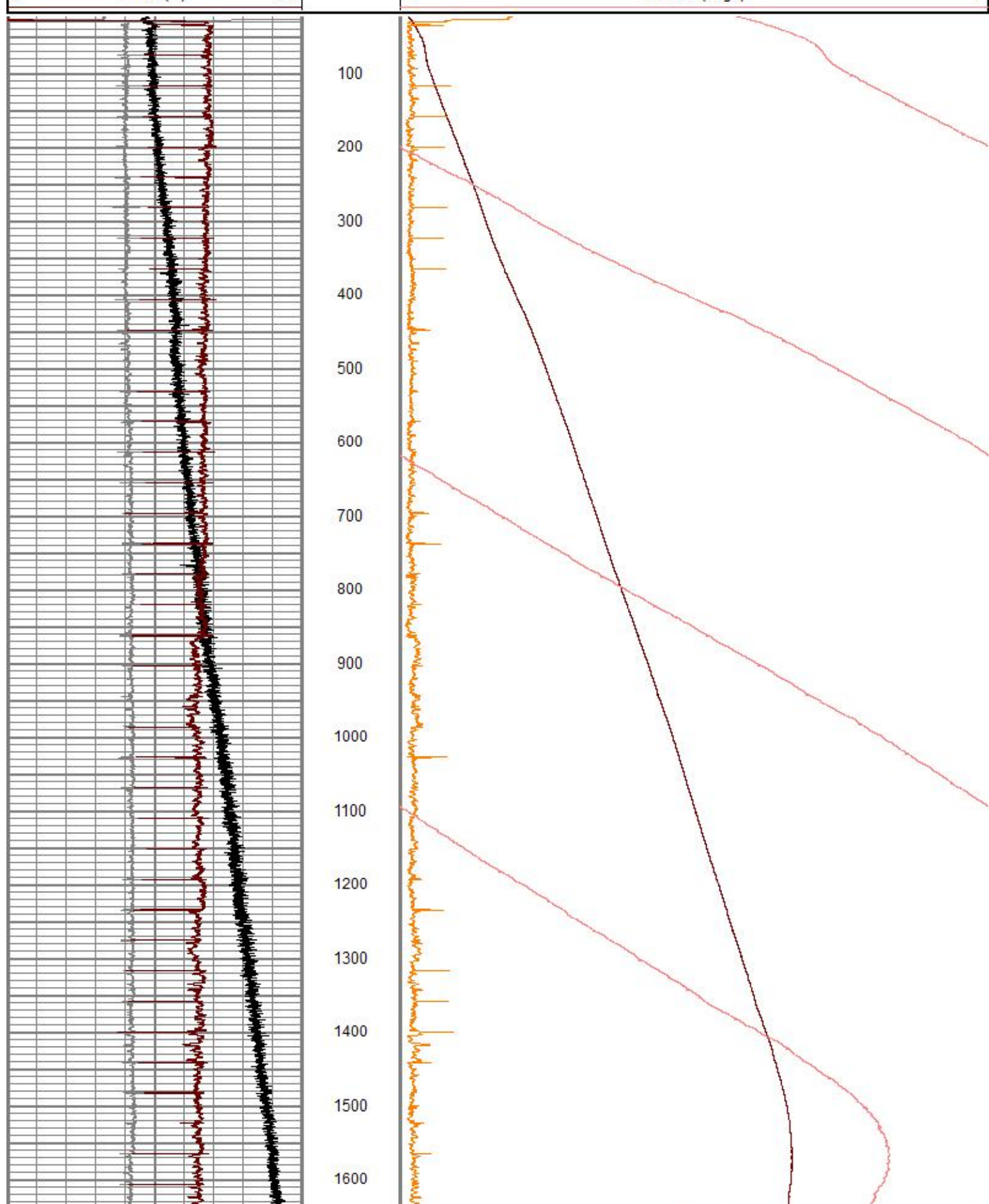
Thanks for choosing GO Wireline, LLC

Sensor	Offset (ft)	Schematic	Description	Length (ft)	O.D. (in)	Weight (lb)
			Cable Head-Titan_144 1 7/16" Titan Cable Head	1.03	1.44	2.00
			CENT-PTS275	2.83	2.75	
			XIPEMAC-56 (12128) XIPE 56 Arm caliper	6.67	3.60	
Meas	5.21					
Aux1	2.83		CENT-PTS275	2.83	2.75	

Dataset: pdc_steamboat14n_56arm_01252023.db: field/well/run1/pass2.4
 Total length: 13.36 ft
 Total weight: 2.00 lb
 O.D.: 3.60 in

Database File f:\all work stuff\all customers\pdc\steamboat 14n\pdc_steamboat14n_56arm_01252023.c
 Dataset Pathname pass2.4
 Presentation Format wtempccl
 Dataset Creation Thu Jan 26 09:24:03 2023
 Charted by Depth in Feet scaled 1:2000

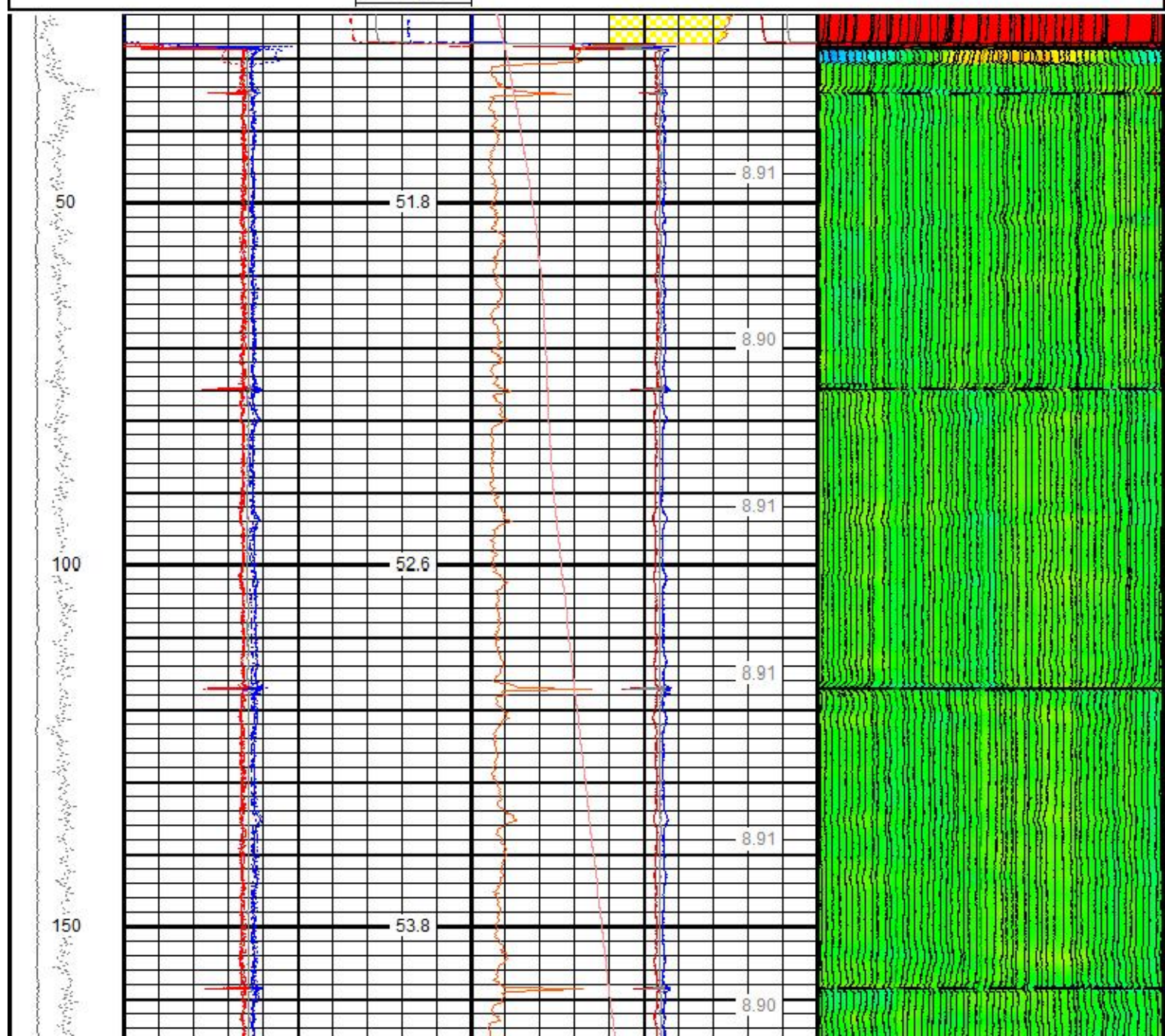
IDMN (in)	50	WTEMP (degF)	100
0 LTEN (lb) 500		RadiiDelta (Inches) (in)	2
0 MINR (in) 0.5	-5	WTEMP (degF)	5

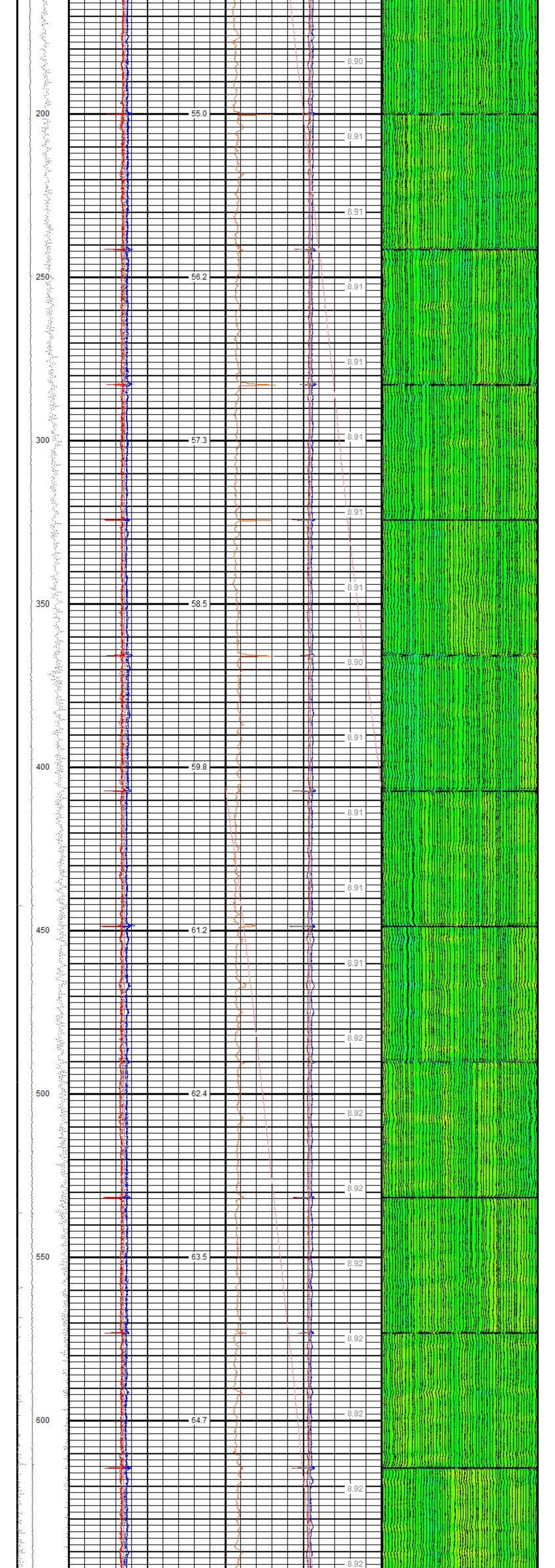


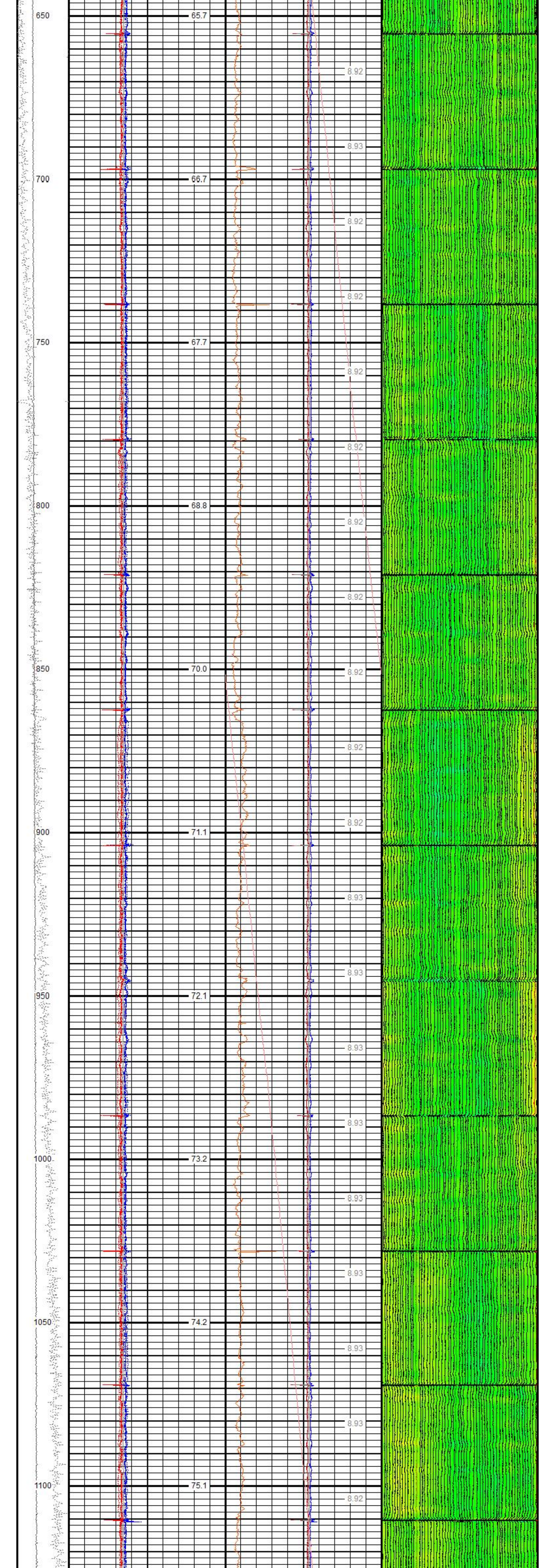
IDMN (in)	50	WTEMP (degF)	100
0 LTEN (lb) 500		RadiiDelta (Inches) (in)	2
0 MINR (in) 0.5	-5	WTEMP (degF)	5

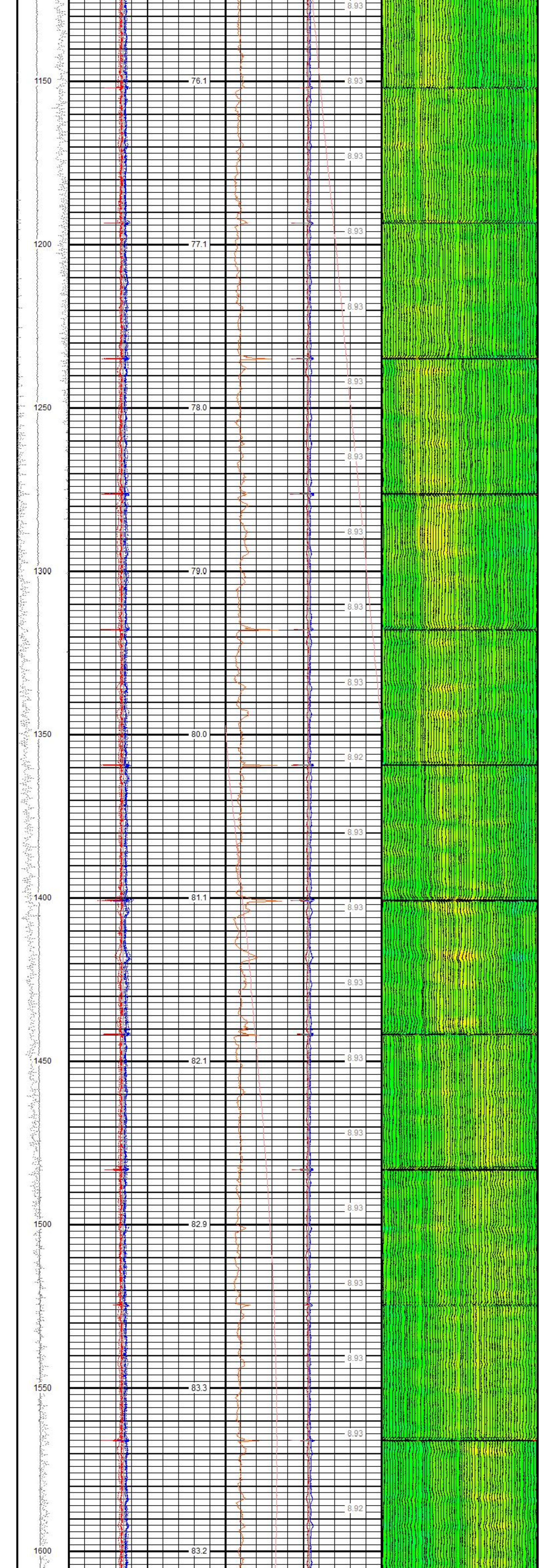
Database File f:\all work stuff\all customers\pdc\steamboat 14n\pdc_steamboat14n_56arm_01252023.c
 Dataset Pathname pass2.4
 Presentation Format 566868~1
 Dataset Creation Thu Jan 26 09:24:03 2023
 Charted by Depth in Feet scaled 1:240

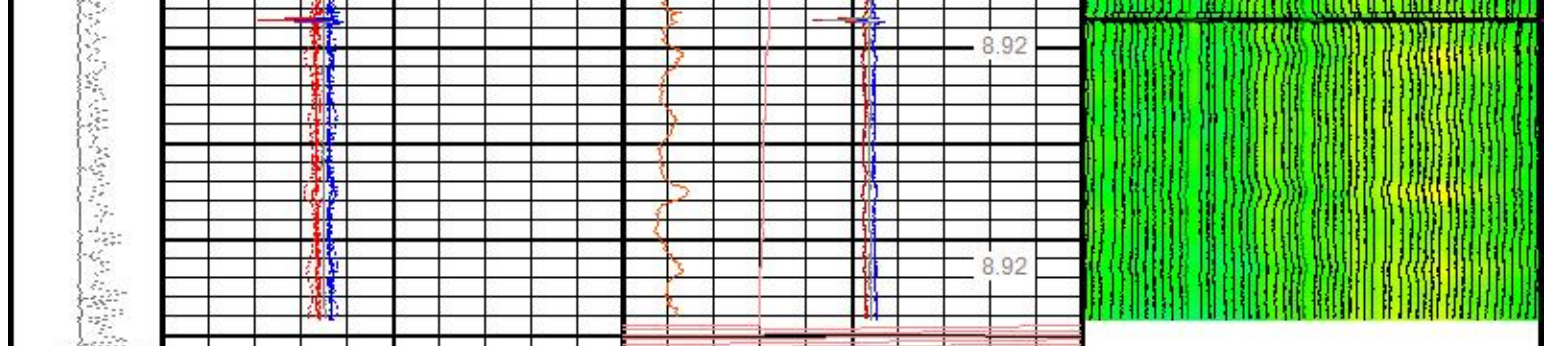
TENSION (lb) 1000	MINR (in) 1	10	IDMN (in) 8	56 Radii
0	MAXR (in) 1	10	MAX ID (in) 8	2" Across Track
LTEN (lb) 100	AVG (in) 1	10	IDAV (in) 8	0.036" Incremental
0	IDMNMAXREM (in) 1	0	RadiiDelta (in) 0.5	1 IMGMAP (in) 200
0	IDMXMINREM (in) 1	0	WTEMP (degF) 10	4.8 (in) 4.8
0	MAXRECC (in) 1		IDAV (in)	
0	MINRECC (in) 1			
	WTEMP (degF)			











TENSION	0	MINR (in)	1	10	IDMN (in)	8	56 Radii 2" Across Track 0.036" Incremental	
0 (lb)1000	0	MAXR (in)	1	10	MAX ID (in)	8		
LTEN	0	AVG (in)	1	10	IDAV (in)	8		
0 (lb) 100	0	IDMNXMAXREM (in)	1	0	RadiiDelta (in)	0.5	1	IMGMAP (in) 200
	0	IDMNXMINREM (in)	1	0	WTEMP (degF)	10		
	0	MAXRECC (in)	1		IDAV (in)			
	0	MINRECC (in)	1					
					WTEMP (degF)			