

# Cement Verification Report - Cementer's Well Service, Inc.

P.O. BOX 336220 • GREELEY, CO 80633 • (970) 353-7299 • FAX (970) 353-7712



COGCC Operator Guidance **RULE #308.A.B(2)A.ii**

CLIENT: PDC Energy	Cementer's FIELD TICKET #	300368-D
--------------------	------------------------------	----------

**Requested Operator Guidance:**

Well Name & Number	Lease	Steamboat	Well No.	15N
Well API Number	05-123-51306			
Job Date	10/2/22	Time on	6:00	24 hr time
Job Type	New Well Surface			
Cementing Company	Cementer's Well Service, Inc	Contact	Nate Kvamme - 303-324-4296	
Ambient conditions	clear	53	temp deg F	
Slurry Description				
a) Purpose	Surface - 9 5/8" 36# CSG, 13 1/2" hole			
b) Cement Class	ASTM C150 Type II			
c) Cement Yield	1.61	cuft / sk		
d) Cement Density	13.9	PPG		
e) Number of sks	792	sks (94# equiv)		
f) Mix Fluid Type				
Water / Cement	8.5	Gal / sk		
g) Slurry mixed	226.9	BBLs slurry		
h) Additives used	1.5%	CaCl2	3.0%	Bentonite
Total Water Used	316.5	BBLs H2O		
i) Displacement Fluid Vol	126.2	BBLs H2O		
j) Method of Placement				
k) Set Depth	1,690	feet (ft)		
l) Stage tool depth	n/a			
m) Float Collar Depth	1,633	feet (ft)		
n) Designed Top of Cement	n/a	to surface		
o) Centralizer depths	0	feet (ft)		

**Charts - (pressure, density, pump rate)**

Landed Plug @ 1654 psi Final Lift Pressure @ 450 psi

Cement Density (as weighed during job) @ 13.9 PPG

**Job notes**

a) Plug down	<input checked="" type="radio"/> Y / <input type="radio"/> N	Time	8:36	24 hr time
b) Floats held	<input checked="" type="radio"/> Y / <input type="radio"/> N		10/2/22	
c) Full Returns	<input checked="" type="radio"/> Y / <input type="radio"/> N	Lost Circulation	<input checked="" type="radio"/> Y / <input type="radio"/> N	
d) Cement to surface	<input checked="" type="radio"/> Y / <input type="radio"/> N	50.0	BBLs to surface	
e) If no returns, top off	n/a	BBLs		
f) Top off detail				
g) Additional Detail				

# Cementer's Well Service, Inc.

P.O. BOX 336220 • GREELEY, CO 80633 • (970) 353-7299 • FAX (970) 353-7712



PDC Energy

## Surface Cement Job Graph & Casing Pressure Test

### COMPANY DETAILS

Date	10/2/22	API #	05-123-51306	Well No.	15N
County	Weld	State	CO	Lease	Steamboat

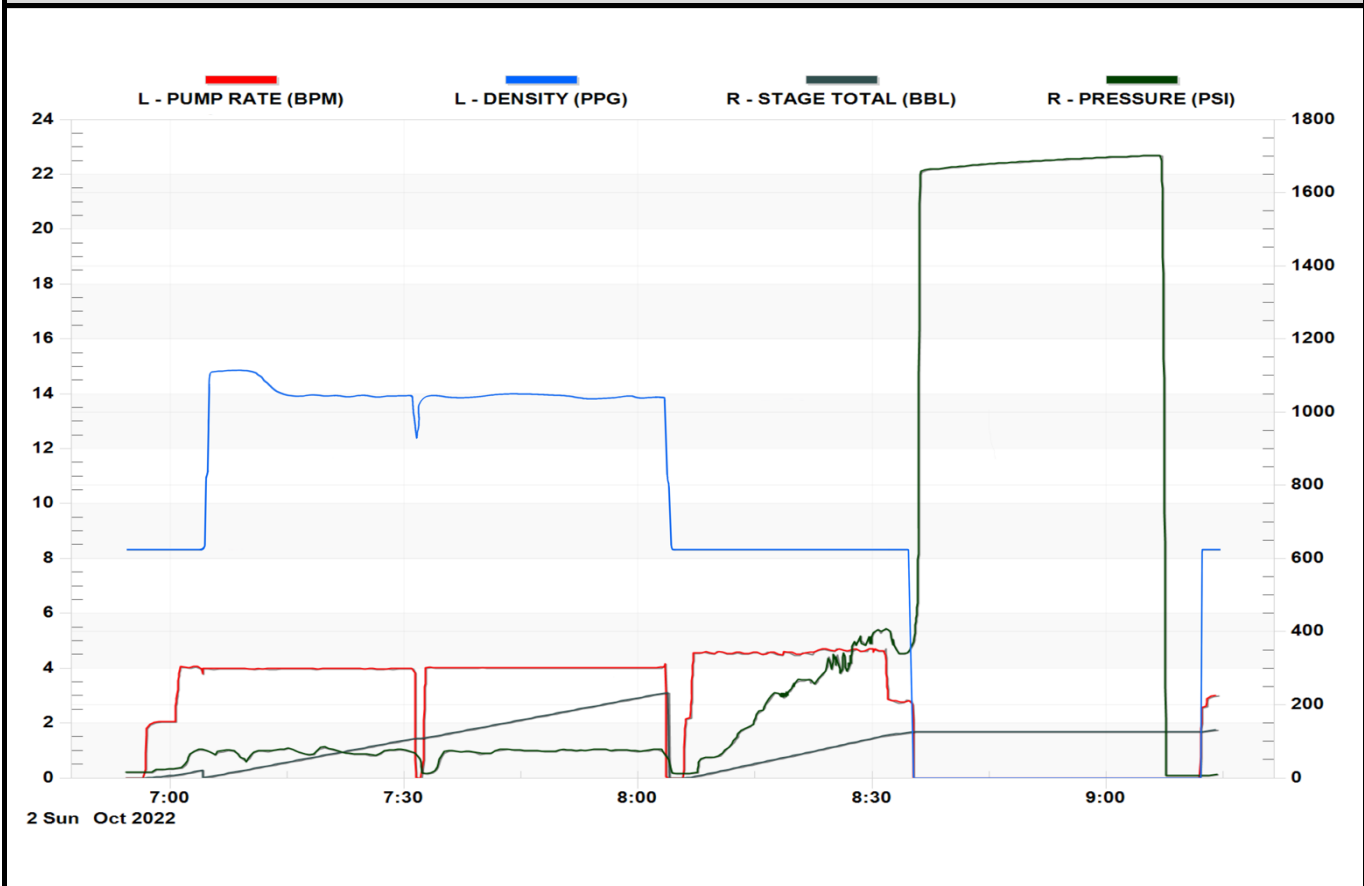
Client PDC Energy

Contact / email \_\_\_\_\_

### JOB DETAILS

TIME ON	6:00	24 hr	Depth	1,700	ft.	Pressure Test @	1,654	psi
START TIME	6:54	10/2/22	Bottom of Surface	1,690	ft.	10 min	1,678	psi
END TIME	9:14	10/2/22	Plug Landed @	1,633	ft.	20 min	1,691	psi
			Plug Landed @	8:36	24 hr	30 min	1,701	psi

### SUMMARY GRAPH





# Centralizer Depths

Well Name: Steamboat 15N

Surface, Set Depth: 1,689.6ftKB

API 05123513060000		Surface Legal Location NWSE 34 4N 66W		Field Name Wattenberg		State CO		Well Configuration Type Horizontal		
Ground Elevation (ft) 4,804.00	Original KB Elevation (ft) 4,832.50	KB-Ground Distance (ft) 28.50	Spud Date 2/24/2023 12:30	Rig Release Date 2/27/2023 14:00	On Production Date	Abandon Date				

## Casing Run Tally

Run #	Ref #	Item Des	OD (in)	Wt (lb/ft)	Grade	Run?	Len (ft)	Centralized?	Ext Jw/ry	Connections	Top (ftKB)	Cum Len (ft)
2		Casing joints	9 5/8	36.00	J-55	Yes	41.37	Yes		LT&C	1,646.4	43.22
3		Casing joints	9 5/8	36.00	J-55	Yes	41.36	Yes		LT&C	1,605.0	84.58
4		Casing joints	9 5/8	36.00	J-55	Yes	41.38	Yes		LT&C	1,563.6	125.96
8		Casing joints	9 5/8	36.00	J-55	Yes	41.32	Yes		LT&C	1,398.2	291.39
12		Casing joints	9 5/8	36.00	J-55	Yes	41.36	Yes		LT&C	1,232.7	456.87
16		Casing joints	9 5/8	36.00	J-55	Yes	41.35	Yes		LT&C	1,067.9	621.70
20		Casing joints	9 5/8	36.00	J-55	Yes	41.36	Yes		LT&C	902.4	787.20
24		Casing joints	9 5/8	36.00	J-55	Yes	41.37	Yes		LT&C	736.9	952.68
28		Casing joints	9 5/8	36.00	J-55	Yes	41.36	Yes		LT&C	571.5	1,118.14
32		Casing joints	9 5/8	36.00	J-55	Yes	41.39	Yes		LT&C	406.5	1,283.15
36		Casing joints	9 5/8	36.00	J-55	Yes	41.37	Yes		LT&C	242.9	1,446.74
40		Casing joints	9 5/8	36.00	J-55	Yes	41.35	Yes		LT&C	77.4	1,612.20