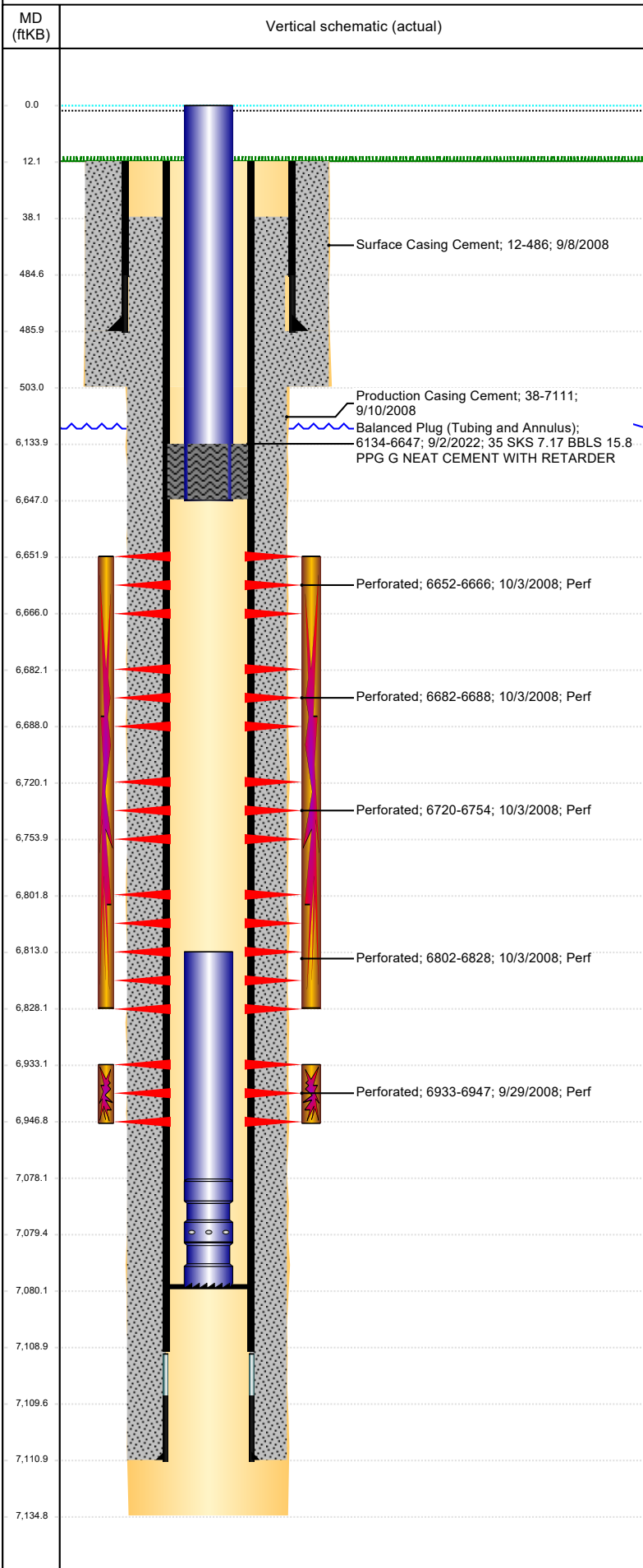




# P&A Wellbore For State

Well Name: MORIAH 17-15

Land, Original Hole, 5/1/2023 11:00:50 AM



Well Header	
Surface UWI 0512327183	Business Unit Rockies
Gov Auth Dist Land	Prod Tree Loc Land
Orig. KB to Gnd (ft) 12.00	Original Spud Date 9/6/2008
Abandon Date	Well Sub-Status TA
High Pre N	
Comment FORM 5 SAYS PRD CSG CEMENT GOES TO SURFACE, CBL LOOKS LIKE TOC IS 38. CEMENT FLUIDS WERE PUT IN LIVE, DIDN'T CHAGE DATA.SLIGHT DISCREPENCIES BETWEEN DAILY REPORTS IN FILE AND RIG DAILIES FOUND. USED DATA FROM RIG DAILY REPORTS.	
Surface Location (Congressional)	
Quarter 3 SW	Quarter 4 NE
Section 17	Township 4
Twonshp N N	Range 64
Rng E/W W	Latitude (°) 40.31552
Longitude (°) -104.5699	
Wellbore Sections	
Section Des	Hole Size (in)
SURFACE	12 1/4
PRODUCTION	7 7/8
Act Top (ftKB)	Act Btm (ftKB)
12.0	503.0
503.0	7,135.0
Casing Strings	
Csg Des	Run Date
Surface	9/7/2008
Production Casing	9/10/2008
OD (in)	Wt/Len (lb/ft)
8 5/8	24.00
4 1/2	11.60
Grade	Top Depth (MD) (ftKB)
H-40	12
M-80	12
Set Depth (MD) (ftKB)	
486	7111
Cement	
Des	Start Date
Surface Casing Cement	9/8/2008
Production Casing Cement	9/10/2008
Balanced Plug (Tubing and Annulus)	9/2/2022
Top (ftKB)	Btm (ftKB)
12.0	486.0
38.0	7,111.0
6,134.0	6,647.0
Zone Statuses	
Zone Name	Status Date
NIOBRARA	6/1/2016
NIOBRARA	9/2/2022
CODELL	6/1/2016
CODELL	9/2/2022
Status	Fluid Type
SI	
Closed	Abandon Well - Temporary, 8/19/2022 00:00
SI	
Closed	Abandon Well - Temporary, 8/19/2022 00:00
Job	Prod Method
Perforation Data	
Linked Zone	Explosive Type
NIOBRARA, Original Hole	A
NIOBRARA, Original Hole	A
NIOBRARA, Original Hole	B
NIOBRARA, Original Hole	C
CODELL, Original Hole	
Entered Shot Total	Top (ftKB)
28	6,652.0
28	6,682.0
136	6,720.0
104	6,802.0
56	6,933.0
Btm (ftKB)	Date
6,666.0	10/3/2008
6,688.0	10/3/2008
6,754.0	10/3/2008
6,828.0	10/3/2008
6,947.0	9/29/2008
Stimulation Intervals	
Zone	Start Date
NIOBRARA, Original Hole	10/5/2008
CODELL, Original Hole	10/1/2008
Top (ftKB)	Btm (ftKB)
6,652.0	6,828.0
6,933.0	6,947.0
Other In Hole	
Run Date	Des
Make	OD (in)
Top (ftKB)	Btm (ftKB)
Logs	
Date	Type
9/9/2008	COMPENSATED DENSITY
9/9/2008	INDUCTION
9/26/2008	CBL/CCL/GR
2/17/2011	GYRO
Depth Top (MD) (ftKB)	Btm (ftKB)
3,600	7,110.0
486	7,130.0
50	7,067.0
10	6,900.0
Plug Back Total Depths	
Date	Type
10/2/2008	FILL
11/26/2008	FILL
Com	PBTD (ftKB)
TAG SAND @ 6773, CLEAN OUT TO PBTD	7,098
C/O to land tbq	7,080