

Fawn 2833-03H



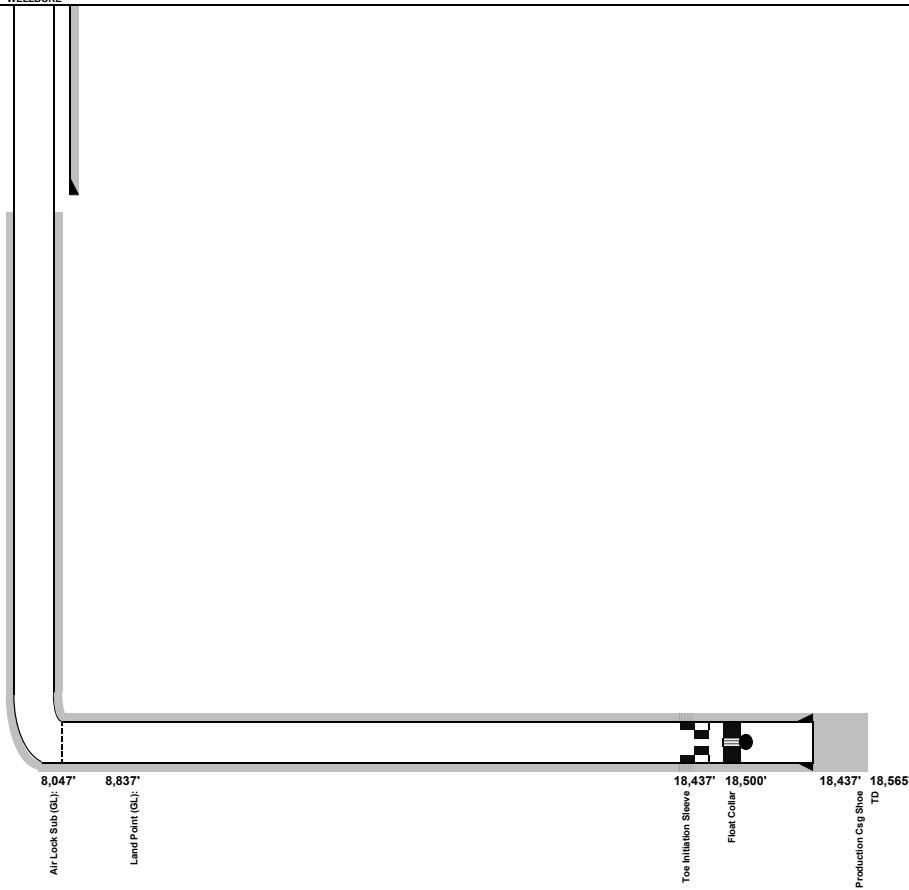
Date 4/30/2023

DESCRIPTION DEPTH WELLBORE

Sfc Casing Shoe: 2,351'
 TOC (CBL Verified): 2,360'

KOP: 7,584'

Max TVD: 7,321'



WELL: Fawn 2833-03H Pre-Frac WBD
LOCATION: SESW Sec 22 T1N R65W
FORMATION: Nio C
API #: 05-123-51850
Field: DJ Horizontal Niobrara
Spud: 02/18/23
Current Status: Awaiting Completions
Well Type: Horizontal
Well Length: XRL

Casing and Tubular Data

Type	Size	Weight	Top	Bottom	Hole Size	Cement Type
Surface	9 5/8	36.0 ppf	0'	2,351'	13.5"	Class G Neat
Production	5 1/2	20.0 ppf	0'	18,550'	8-3/4"	13.2 Lead, 13.2 Tail
Tubing	2 3/8	4.6 ppf	0'	n/a	n/a	N/A

Elevation Data

GL	5104	feet
KB	5125	feet
Difference	21	feet

*All depths from GL unless otherwise noted

TPZ/ Heal Setback Depth (MD GL): 8,754'
 BPZ/ Toe Setback Depth (MD GL): 18,445'
 Production Casing Info: 5.5" 20# US Steel P110HP Freedom HTQ
 Cement to Surface during 5.5" Job: 35 bbls