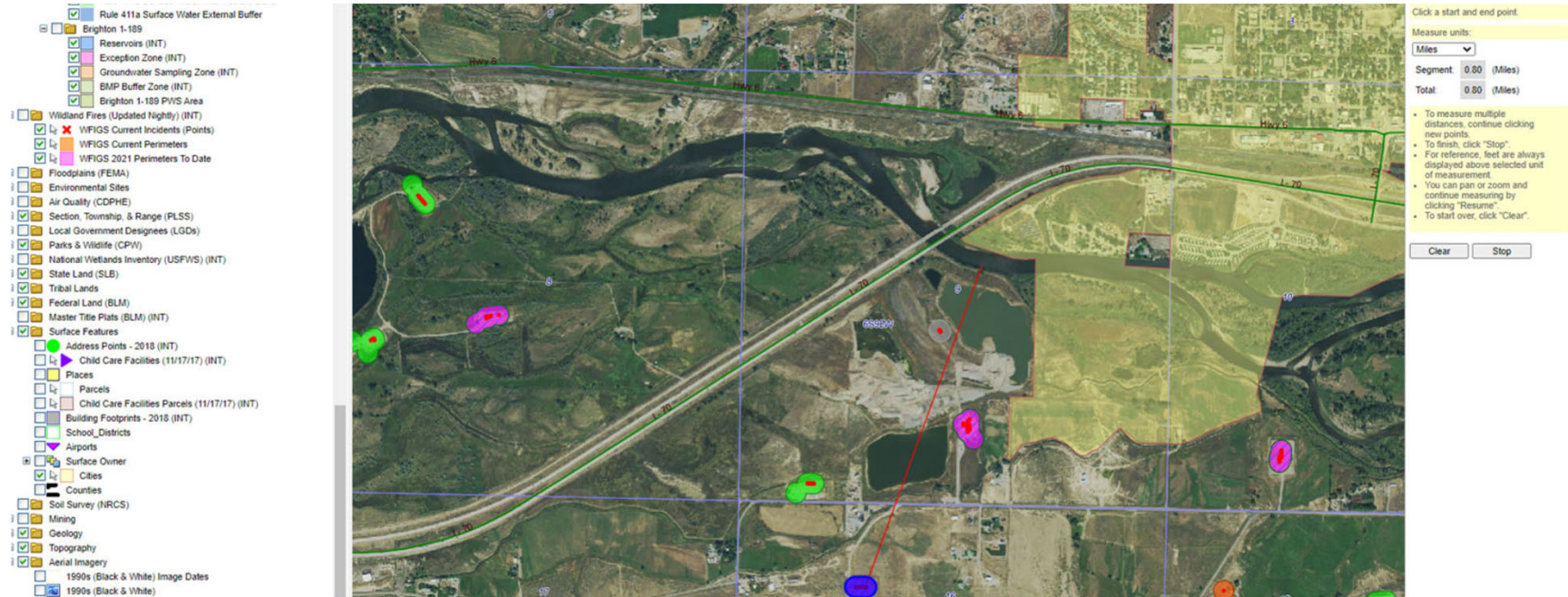


Storm Water Management and Erosion control

Location Name: McPherson A

Location #: 335539



Location Overview : Location is approximately 8/10ths of a mile from the Colorado river.

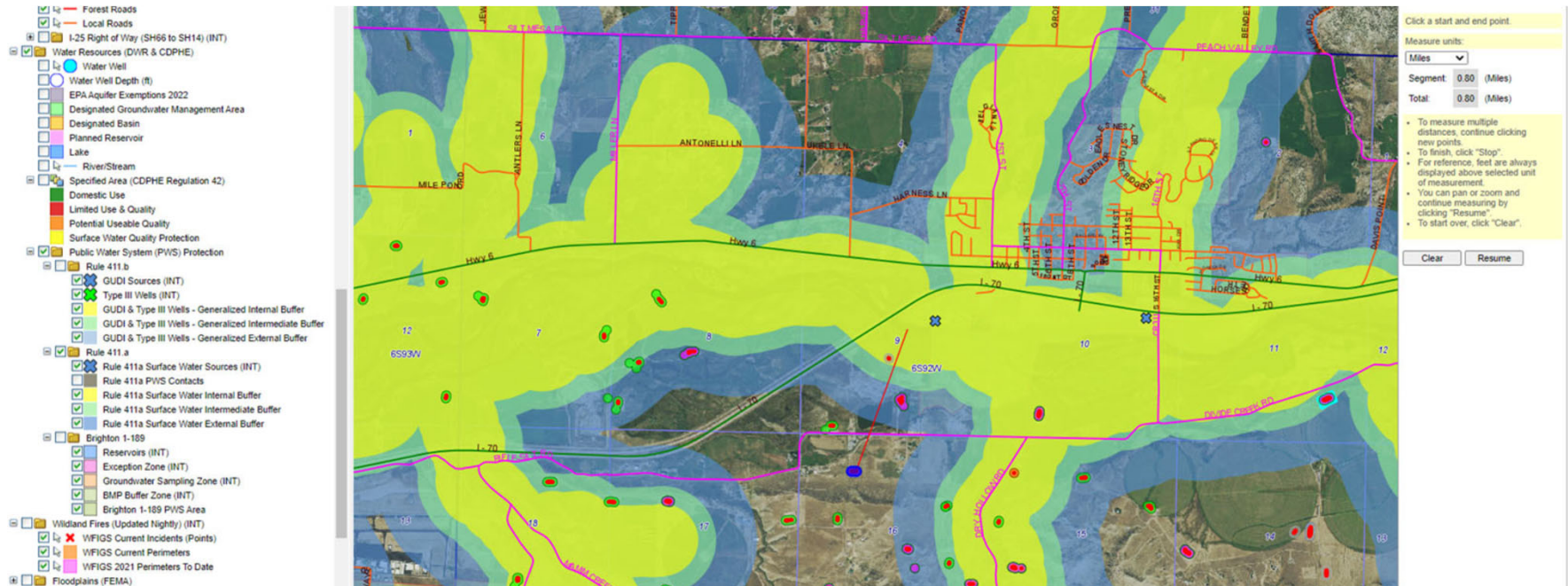


COLORADO
Oil & Gas Conservation
Commission
Department of Natural Resources

Storm Water Management and Erosion control

Location Name: McPherson A

Location #: 335539



Location Overview : Location is with close proximity to the 411 Public Water System Protection

Storm water Management and Erosion control

Location Name: McPherson A

Location #: 335539



Unmarked dead man, photo from previous inspection.



Unmarked dead man, photo from follow up inspection.



COLORADO
Oil & Gas Conservation
Commission
Department of Natural Resources

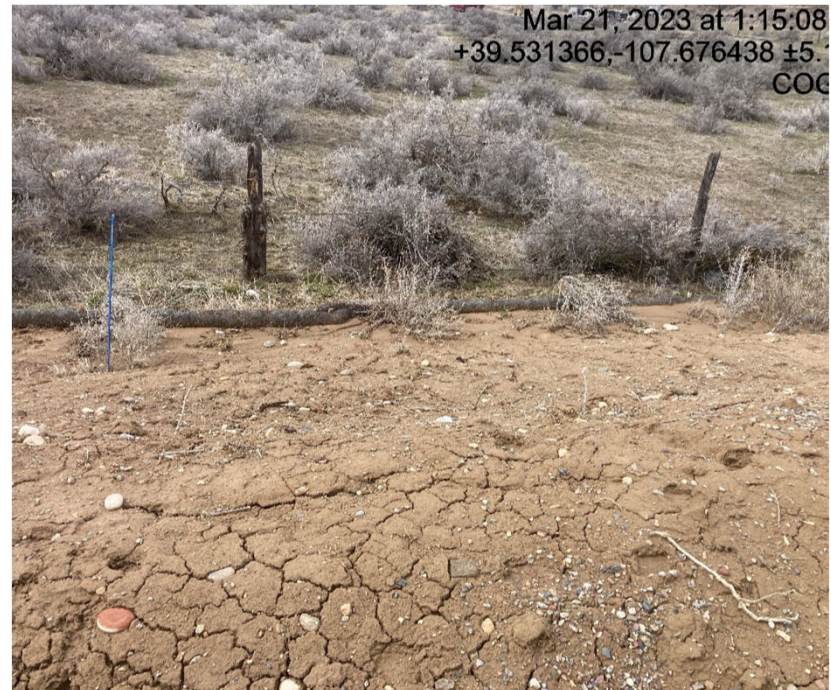
Storm water Management and Erosion control

Location Name: McPherson A

Location #: 335539



Fill slope shows lack of stabilization, Photo from
Follow up inspection



Fill slope shows lack of stabilization, Photo from
previous inspection



COLORADO
Oil & Gas Conservation
Commission
Department of Natural Resources

Storm water Management and Erosion control

Location Name: McPherson A

Location #: 335539



Fill slope shows lack of stabilization, Photo from
Follow up inspection



Fill slope shows lack of stabilization, Photo from
previous inspection



COLORADO
Oil & Gas Conservation
Commission
Department of Natural Resources

Storm water Management and Erosion control

Location Name: McPherson A

Location #: 335539



Fill slope shows lack of stabilization, Photo from
Follow up inspection



Fill slope shows lack of stabilization, Photo from
previous inspection



COLORADO
Oil & Gas Conservation
Commission
Department of Natural Resources

Storm water Management and Erosion control

Location Name: McPherson A

Location #: 335539



Erosion is undermining location berm coming out of fill slope. Photo from follow up inspection



Erosion is undermining location berm coming out of fill slope. Photo from previous inspection



COLORADO
Oil & Gas Conservation
Commission
Department of Natural Resources

Storm water Management and Erosion control

Location Name: McPherson A

Location #: 335539



Erosion is undermining location berm coming out of fill slope. Photo from follow up inspection



Erosion is undermining location berm coming out of fill slope. Photo from previous inspection



COLORADO
Oil & Gas Conservation
Commission
Department of Natural Resources

Storm water Management and Erosion control

Location Name: McPherson A

Location #: 335539



Berm shows signs of erosion. Photo from follow up inspection



Berm shows signs of erosion. Photo from Previous inspection. Blankets have been installed in areas.



COLORADO
Oil & Gas Conservation
Commission
Department of Natural Resources

Storm water Management and Erosion control

Location Name: McPherson A

Location #: 335539



Fill slope shows lack of stabilization, Photo from
Follow up inspection



Fill slope shows lack of stabilization, Photo from
previous inspection



COLORADO
Oil & Gas Conservation
Commission
Department of Natural Resources

Storm water Management and Erosion control

Location Name: McPherson A

Location #: 335539



Erosion under waddles. Photo from follow up inspection



Erosion under waddles. Photo from previous inspection



COLORADO
Oil & Gas Conservation
Commission
Department of Natural Resources

Storm water Management and Erosion control

Location Name: McPherson A

Location #: 335539



Sediment migration from location. Photo from follow up inspection



Sediment migration from location. Photo from previous inspection



COLORADO
Oil & Gas Conservation
Commission
Department of Natural Resources

Storm water Management and Erosion control

Location Name: McPherson A

Location #: 335539



Sediment migration from location. Photo from follow up inspection



Sediment migration from location. Photo from previous inspection



COLORADO
Oil & Gas Conservation
Commission
Department of Natural Resources

Storm water Management and Erosion control

Location Name: McPherson A

Location #: 335539



Sediment migration choking out vegetation
continues on to neighboring property.



Circle indicates inlet of tunneling through
sediment trap



COLORADO
Oil & Gas Conservation
Commission
Department of Natural Resources

Storm water Management and Erosion control

Location Name: McPherson A

Location #: 335539



Outlet side of sediment trap tunneling and erosion channels with sediment migration



Outlet side of sediment trap tunneling and erosion channels with sediment migration



COLORADO
Oil & Gas Conservation
Commission
Department of Natural Resources

Storm water Management and Erosion control

Location Name: McPherson A

Location #: 335539



Sediment migration choking out vegetation



Outlet side of sediment trap tunneling and erosion channels with sediment migration



COLORADO
Oil & Gas Conservation
Commission
Department of Natural Resources

Storm water Management and Erosion control

Location Name: McPherson A

Location #: 335539



Outlet side of sediment trap tunneling and erosion channels with sediment migration



Circle indicates inlet of tunneling through sediment trap



COLORADO
Oil & Gas Conservation
Commission
Department of Natural Resources

Storm water Management and Erosion control

Location Name: McPherson A

Location #: 335539



BMP's Failing



Location sill shows signs of lack of stabilization/compaction



COLORADO
Oil & Gas Conservation
Commission
Department of Natural Resources

Storm water Management and Erosion control

Location Name: McPherson A

Location #: 335539



Access road BMP's Failing Photo from follow up inspection



Access road BMP's Failing Photo from previous inspection



COLORADO
Oil & Gas Conservation
Commission
Department of Natural Resources

Storm water Management and Erosion control

Location Name: McPherson A

Location #: 335539



Photo from follow up inspection of erosion and failing BMP's



Photo from previous inspection of erosion and failing BMP's



COLORADO
Oil & Gas Conservation
Commission
Department of Natural Resources

Storm water Management and Erosion control

Location Name: McPherson A

Location #: 335539



Debris



Staining next to all erosion and sediment migration



COLORADO
Oil & Gas Conservation
Commission
Department of Natural Resources

Storm water Management and Erosion control

Location Name: McPherson A

Location #: 335539



Erosion and tunneling next to rip rap



Erosion and tunneling next to rip rap



COLORADO
Oil & Gas Conservation
Commission
Department of Natural Resources

Storm water Management and Erosion control

Location Name: McPherson A

Location #: 335539



BMP's have been moved for equipment to enter and replaced in adequately.



BMP's have been moved for equipment to enter and replaced in adequately.



COLORADO
Oil & Gas Conservation
Commission
Department of Natural Resources

Storm water Management and Erosion control

Location Name: McPherson A

Location #: 335539



BMP's have been moved for equipment to enter and replaced in adequately.



BMP's have been moved for equipment to enter and replaced in adequately.



COLORADO
Oil & Gas Conservation
Commission
Department of Natural Resources

Storm water Management and Erosion control

Location Name: McPherson A

Location #: 335539



BMP's Failing and erosion channels with sediment migration. Photo from previous inspection



BMP's Failing and erosion channels with sediment migration. Photo from follow up inspection



COLORADO
Oil & Gas Conservation
Commission
Department of Natural Resources

Storm water Management and Erosion control

Location Name: McPherson A

Location #: 335539



Outlet from tunneling occurring in access road ditch and erosion.



Outlet from tunneling occurring in access road ditch and erosion.



COLORADO
Oil & Gas Conservation
Commission
Department of Natural Resources

Storm water Management and Erosion control

Location Name: McPherson A

Location #: 335539



Tunneling through ditch at check dam out the side of the fill slope next to culvert



Tunneling through ditch at check dam out the side of the fill slope next to culvert. Circle is inlet and arrow is pointing to outlet.



COLORADO
Oil & Gas Conservation
Commission
Department of Natural Resources