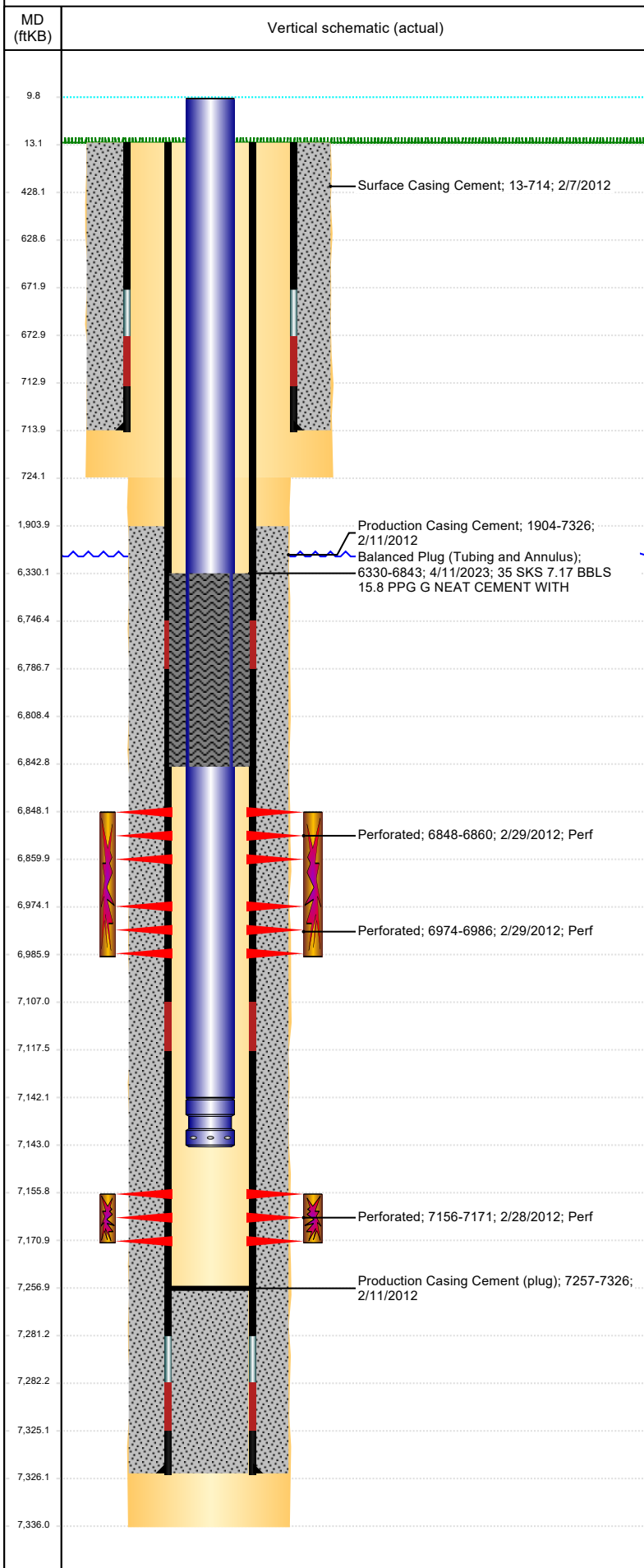




P&A Wellbore For State

Well Name: STROHAUER PC G04-30D

Land, Original Hole, 4/27/2023 4:22:01 PM



Well Header										
Surface UWI 0512334740			Business Unit Rockies			Gov Auth Dist		Prod Tree Loc Land		
Orig. KB to Gnd (ft) 13.00		Original Spud Date 2/7/2012		Abandon Date		Well Sub-Status TA			High Pres N	
Comment 318 A.e LOCATION										
Surface Location (Congressional)										
Quarter 3 NE	Quarter 4 NE	Section 5	Township 4	Twnshp N N	Range 65	Rng E/W W	Latitude (°) 40.346985517	Longitude (°) -104.680225776		
Wellbore Sections										
Section Des			Hole Size (in)			Act Top (ftKB)		Act Btm (ftKB)		
SURFACE			12 1/4			13.0		724.0		
PRODUCTION			7 7/8			724.0		7,336.0		
Casing Strings										
Csg Des			Run Date		OD (in)	Wt/Len (lb/ft)	Grade	Top Depth (MD) (ftKB)	Set Depth (MD) (ftKB)	
Surface			2/7/2012		8 5/8	24.00	J-55	13	714	
Production Casing			2/9/2012		4 1/2	11.60	M-80	13	7326	
Cement										
Des					Start Date		Top (ftKB)		Btm (ftKB)	
Surface Casing Cement					2/7/2012		13.0		714.0	
Production Casing Cement					2/11/2012		1,904.0		7,326.0	
Balanced Plug (Tubing and Annulus)					4/11/2023		6,330.0		6,843.0	
Zone Statuses										
Zone Name		Status Date		Status	Fluid Type		Job		Prod Method	
NIOBRARA		3/7/2012		PR			Abandon Well - Temporary, 4/7/2023 00:00			
NIOBRARA		4/11/2023		Closed						
CODELL		3/7/2012		PR			Abandon Well - Temporary, 4/7/2023 00:00			
CODELL		4/11/2023		Closed						
Perforation Data										
Linked Zone				Explosive Type	Entered Shot Total	Top (ftKB)		Btm (ftKB)	Date	
NIOBRARA, Original Hole				A	24	6,848.0		6,860.0	2/29/2012	
NIOBRARA, Original Hole				B	24	6,974.0		6,986.0	2/29/2012	
CODELL, Original Hole					60	7,156.0		7,171.0	2/28/2012	
Stimulation Intervals										
Zone					Start Date		Top (ftKB)		Btm (ftKB)	
NIOBRARA, Original Hole					2/29/2012		6,848.0		6,986.0	
CODELL, Original Hole					2/29/2012		7,156.0		7,171.0	
Other In Hole										
Run Date		Des				Make		OD (in)	Top (ftKB)	Btm (ftKB)
Logs										
Date		Type					Depth Top (MD) (ftKB)		Btm (ftKB)	
2/10/2012		Caliper/Comp. Density/Neutron/GR/SP/ML					714		7,313.0	
2/10/2012		DIL/GR/SP/Caliper					714		7,333.0	
2/27/2012		CBL/CCL/GR					1,770		7,256.0	
Plug Back Total Depths										
Date		Type			Com				PBTD (ftKB)	
2/10/2012		FLOAT COLLAR			FLOAT COLLAR				7,281	
2/27/2012		FILL			DEPTH LOGGER ON CBL				7,257	