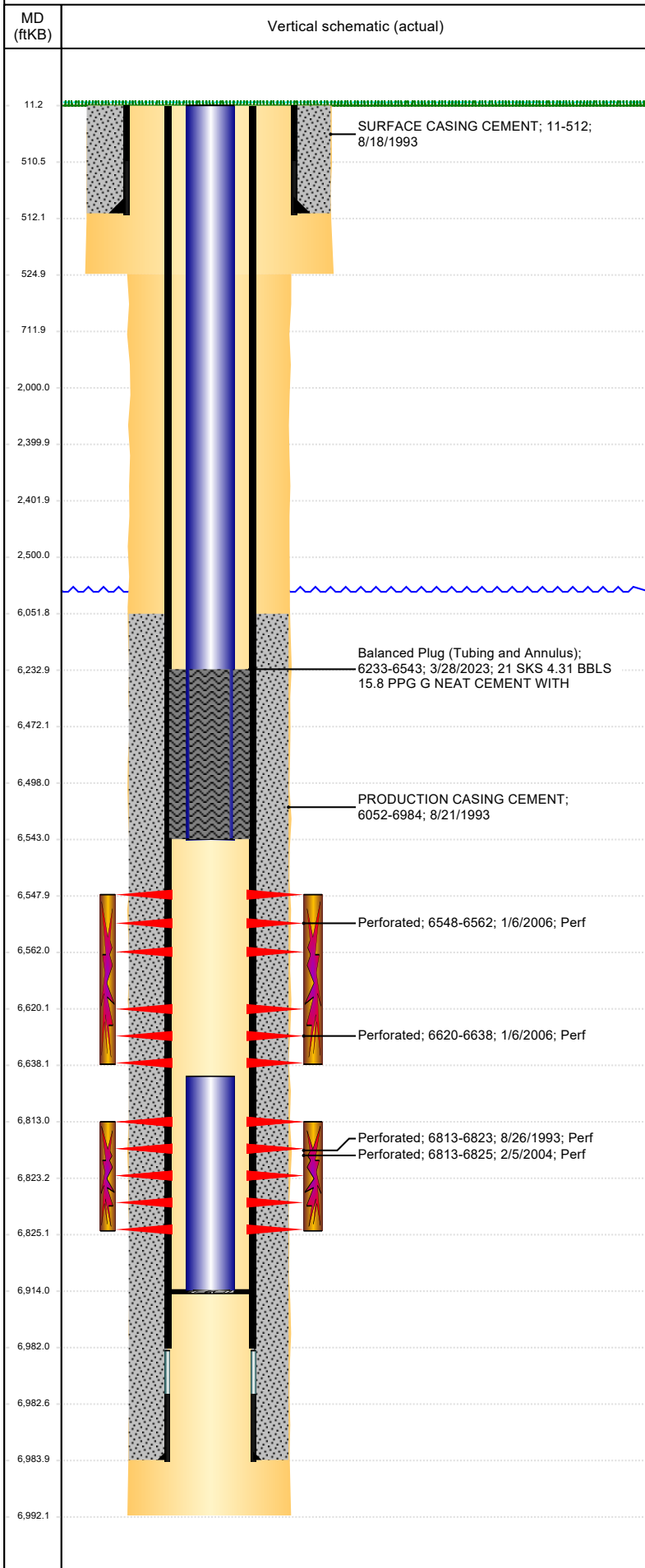




P&A Wellbore For State

Well Name: JOHNSTON 22-04

Land, Original Hole, 4/18/2023 12:00:30 PM



Well Header

Surface UWI 0512317235	Business Unit Rockies	Gov Auth Dist	Prod Tree Loc Land
Orig. KB to Gnd (ft) 11.00	Original Spud Date 8/18/1993	Abandon Date	Well Sub-Status TA
High Pre N			

Comment

COGISS SHOWING SI SINCE 11/2017
TWO TYPES OF GRADES ON THE SCHEMATIC M75 AND WC75 WITH A TOTAL OF 171 JOINTS.

Surface Location (Congressional)

Quarter 3 NW	Quarter 4 NW	Section 22	Township 4	Twnshp N N	Range 64	Rng E/W W	Latitude (°) 40.302849571	Longitude (°) -104.543590092
-----------------	-----------------	---------------	---------------	---------------	-------------	--------------	------------------------------	---------------------------------

Wellbore Sections

Section Des	Hole Size (in)	Act Top (ftKB)	Act Btm (ftKB)
SURFACE	12 1/4	11.0	525.0
PRODUCTION	7 7/8	525.0	6,992.0

Casing Strings

Csg Des	Run Date	OD (in)	Wt/Len (lb/ft)	Grade	Top Depth (MD) (ftKB)	Set Depth (MD) (ftKB)
Surface	8/18/1993	8 5/8	23.00	M-50	11	512
Production Casing	8/21/1993	4 1/2	11.60		11	6984

Cement

Des	Start Date	Top (ftKB)	Btm (ftKB)
SURFACE CASING CEMENT	8/18/1993	11.0	512.0
PRODUCTION CASING CEMENT	8/21/1993	6,052.0	6,984.0
Balanced Plug (Tubing and Annulus)	3/28/2023	6,233.0	6,543.0

Zone Statuses

Zone Name	Status Date	Status	Fluid Type	Job	Prod Method
CODELL	2/26/2004	PR		RE-FRAC, 2/4/2004 00:00	Flowing
CODELL	3/28/2023	Closed		Abandon Well - Temporary, 3/25/2023 00:00	
NIOBRARA	1/24/2006	PR		RECOMPLETION, 1/4/2006 00:00	Flowing
NIOBRARA	3/28/2023	Closed		Abandon Well - Temporary, 3/25/2023 00:00	

Perforation Data

Linked Zone	Explosive Type	Entered Shot Total	Top (ftKB)	Btm (ftKB)	Date
NIOBRARA, Original Hole	A	84	6,548.0	6,562.0	1/6/2006
NIOBRARA, Original Hole	B	108	6,620.0	6,638.0	1/6/2006
CODELL, Original Hole		48	6,813.0	6,825.0	2/5/2004
CODELL, Original Hole		20	6,813.0	6,823.0	8/26/1993

Stimulation Intervals

Zone	Start Date	Top (ftKB)	Btm (ftKB)
NIOBRARA, Original Hole	1/23/2006	6,548.0	6,638.0
CODELL, Original Hole	8/31/1993	6,813.0	6,823.0
CODELL, Original Hole	2/17/2004	6,813.0	6,825.0

Other In Hole

Run Date	Des	Make	OD (in)	Top (ftKB)	Btm (ftKB)

Logs

Date	Type	Depth Top (MD) (ftKB)	Btm (ftKB)
8/21/1993	COMPENSATED DENSITY	4,150	6,990.0
8/21/1993	INDUCTION	511	6,990.0
8/26/1993	CEMENT BOND	5,950	6,929.0
3/15/2011	GYRO	10	6,700.0

Plug Back Total Depths

Date	Type	Com	PBTD (ftKB)
8/26/1993	FILL	DEPTH LOGGER ON CBL	6,934
2/17/2006	FILL	LAST CLEAN OUT @ 6913.64	6,914