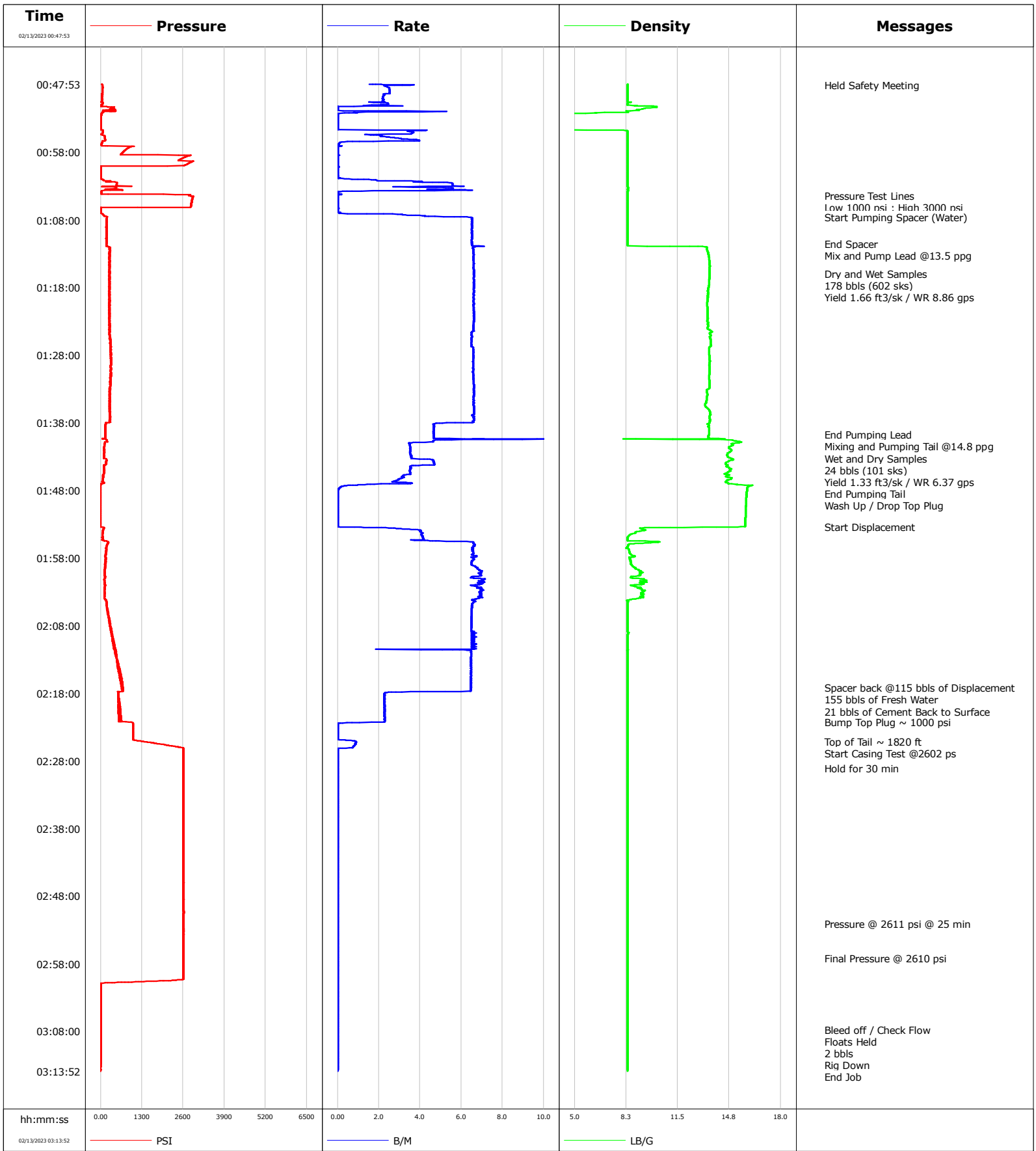


Well	GIG-EM STATE Y9-761	Client	Chevron Corp
Field	Wattenberg	SIR No.	69666
Engineer	Omar Sanchez	Job Type	Surface
Country	United States	Job Date	02-12-2023



				Customer			Job Number		
				Chevron Corp			69666		
Well		Location (legal)		Schlumberger Location		Job Start			
GIG-EM STATE Y9-761		595 FNL 2610 FWL SEC 16 T2N R64W NENW		Matthew Cleveland		Feb/12/2023			
Field		Formation Name/Type		Deviation	Bit Size	Well MD	Well TVD		
Wattenberg				deg	in	2057.0 ft	2057.0 ft		
County		State/Province		BHP	BHST	BHCT	Pore Press. Gradient		
Weld		Colorado		psi	116 degF	95 degF	lb/gal		
Well Master		API/UWI							
0066510373		05-123-51732-00-00							
Rig Name	Drilled For	Service Via		Casing/Liner					
P268	Oil	Land		Depth, ft	Size, in	Weight, lb/ft	Grade	Thread	
Offshore Zone	Well Class	Well Type		109.0	16.0	36.94	A-52A	BUTT	
	New	Development		2057.0	9.6	36.0	J55	8RD	
Drilling Fluid Type		Max. Density	Plastic Viscosity	Tubing/Drill Pipe					
		lb/gal	cP	T/D	Depth, ft	Size, in	Weight, lb/ft	Grade	Thread
Service Line	Job Type								
Cementing	Surface								
Max. Allowed Tub. Press	Max. Allowed Ann. Press	WH Connection		Perforations/Open Hole					
psi	psi	Single Cement head		Top, ft	Bottom, ft	shot/ft	No. of Shots	Total Interval	
Service Instructions 178 bbls (602 sks) Yield 1.66 ft3/sk / WR 8.86 gps 24 bbls (101 sks) Yield 1.33 ft3/sk / WR 6.37 gps				ft	ft			ft	
				ft	ft			Diameter	
				ft	ft			in	
				Treat Down	Displacement	Packer Type	Packer Depth		
Casing	155.0 bbl		ft						
Tubing Vol.	Casing Vol.	Annular Vol.	Openhole Vol.						
bbl	159.0 bbl	199.0 bbl	170.0 bbl						
Casing/Tubing Secured	1 Hole Vol. Circulated prior to Cement	Casing Tools			Squeeze Job				
<input checked="" type="checkbox"/>	<input checked="" type="checkbox"/>								
Lift Pressure	Shoe Type	Shoe Depth		Stage Tool Type	Stage Tool Depth	Tail Pipe Size	Tail Pipe Depth	Sqz. Total Vol.	
psi	Guide	2057.0 ft			ft	in	ft	bbl	
Pipe Rotated	Pipe Reciprocated	No. Centralizers	Top Plugs	Bottom Plugs	Collar Type	Collar Depth	Tail Pipe Depth	Sqz. Total Vol.	
<input type="checkbox"/>	<input type="checkbox"/>		1		Float	2010.0 ft	ft	bbl	
Cement Head Type	Job Scheduled For	Arrived on Location	Leave Location	Collar Type	Collar Depth	Tail Pipe Depth	Sqz. Total Vol.	Message	
	Feb/12/2023 21:00	Feb/12/2023 20:30	Feb/13/2023 04:00	Float	2010.0 ft	ft	bbl		
Date	Time 24-hr clock	Treating Pressure PSI	Flow Rate B/M	Density LB/G	Volume BBL	Message			
02/13/2023	00:48:00	63	3.1	8.34	0.3	Held Safety Meeting			
02/13/2023	01:04:24	2782	0.0	8.34	21.8	Pressure Test Lines			
02/13/2023	01:05:34	2856	0.0	8.34	21.8	Low 1000 psi ; High 3000 psi			
02/13/2023	01:07:37	196	6.5	8.34	24.2	Start Pumping Spacer (Water)			
02/13/2023	01:11:28	209	6.5	8.33	49.3	End Spacer			
02/13/2023	01:11:44	196	6.5	8.33	51.0	Mix and Pump Lead @13.5 ppg			
02/13/2023	01:15:55	296	6.6	13.51	78.6	Dry and Wet Samples			
02/13/2023	01:16:06	270	6.6	13.50	79.8	178 bbls (602 sks)			
02/13/2023	01:16:22	294	6.6	13.50	81.6	Yield 1.66 ft3/sk / WR 8.86 gps			
02/13/2023	01:39:43	151	4.7	13.47	232.0	End Pumping Lead			
02/13/2023	01:40:44	201	4.6	15.35	237.2	Mixing and Pumping Tail @14.8 ppg			
02/13/2023	01:41:39	110	3.5	14.71	240.5	Wet and Dry Samples			
02/13/2023	01:41:57	116	3.5	14.88	241.6	24 bbls (101 sks)			
02/13/2023	01:42:08	106	3.5	14.88	242.3	Yield 1.33 ft3/sk / WR 6.37 gps			
02/13/2023	01:47:41	-8	0.1	15.88	260.3	End Pumping Tail			
02/13/2023	01:50:10	-5	0.0	15.80	260.3	Wash Up / Drop Top Plug			
02/13/2023	01:53:23	-4	0.1	15.27	260.3	Start Displacement			
02/13/2023	02:17:08	670	6.5	8.34	410.9	Spacer back @115 bbls of Displacement			
02/13/2023	02:17:54	560	2.3	8.34	415.2	155 bbls of Fresh Water			
02/13/2023	02:18:12	581	2.3	8.34	415.9	21 bbls of Cement Back to Surface			
02/13/2023	02:22:17	970	1.7	8.34	425.2	Bump Top Plug ~ 1000 psi			

Well		Field		Job Start		Customer		Job Number	
GIG-EM STATE Y9-761		Wattenberg		Feb/12/2023		Chevron Corp		69666	
Date	Time 24-hr clock	Treating Pressure PSI	Flow Rate B/M	Density LB/G	Volume BBL	Message			
02/13/2023	02:26:02	2584	0.7	8.34	426.2	Start Casing Test @2602 ps			
02/13/2023	02:29:06	2602	0.0	8.34	426.2	Hold for 30 min			
02/13/2023	02:52:03	2611	0.0	8.35	426.2	Pressure @ 2611 psi @ 25 min			
02/13/2023	02:57:11	2610	0.0	8.35	426.2	Final Pressure @ 2610 psi			
02/13/2023	03:07:43	11	0.0	8.34	426.2	Bleed off / Check Flow			
02/13/2023	03:07:47	11	0.0	8.34	426.2	Floats Held			
02/13/2023	03:08:10	11	0.0	8.34	426.2	2 bbls			
02/13/2023	03:08:27	11	0.0	8.34	426.2	Rig Down			

Post Job Summary

Average Pump Rates, bbl/min					Volume of Fluid Injected, bbl			
Slurry	N2	Mud	Maximum Rate	Total Slurry	Mud	Spacer	N2	
5.3			10.6	202.0	0.0	30.0		
Treating Pressure Summary, psi					Breakdown Fluid			
Maximum	Final	Average	Bump Plug to	Breakdown	Type	Volume	Density	
2933	0	915				bbl	lb/gal	
Avg. N2 Percent	Designed Slurry Volume	Displacement	Mix Water Temp	Cement Circulated to Surface?	<input checked="" type="checkbox"/>	Volume	21.0 bbl	
%	202.0 bbl	155.0 bbl	55 degF	Washed Thru Perfs	<input type="checkbox"/>	To	ft	
Customer or Authorized Representative	Schlumberger Supervisor			Circulation Lost	<input type="checkbox"/>	Job Completed	<input checked="" type="checkbox"/>	
Kyle Renten	Omar Sanchez			-		-		