



Verdad Resources

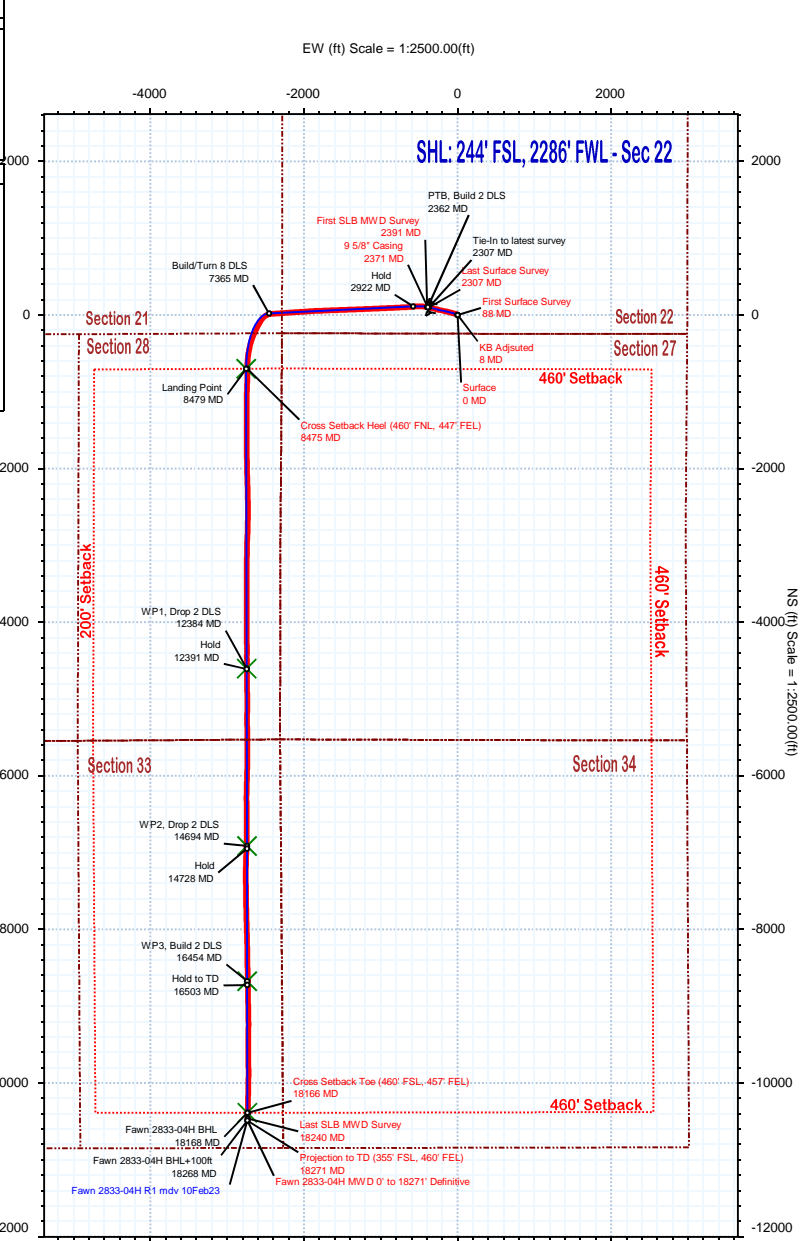
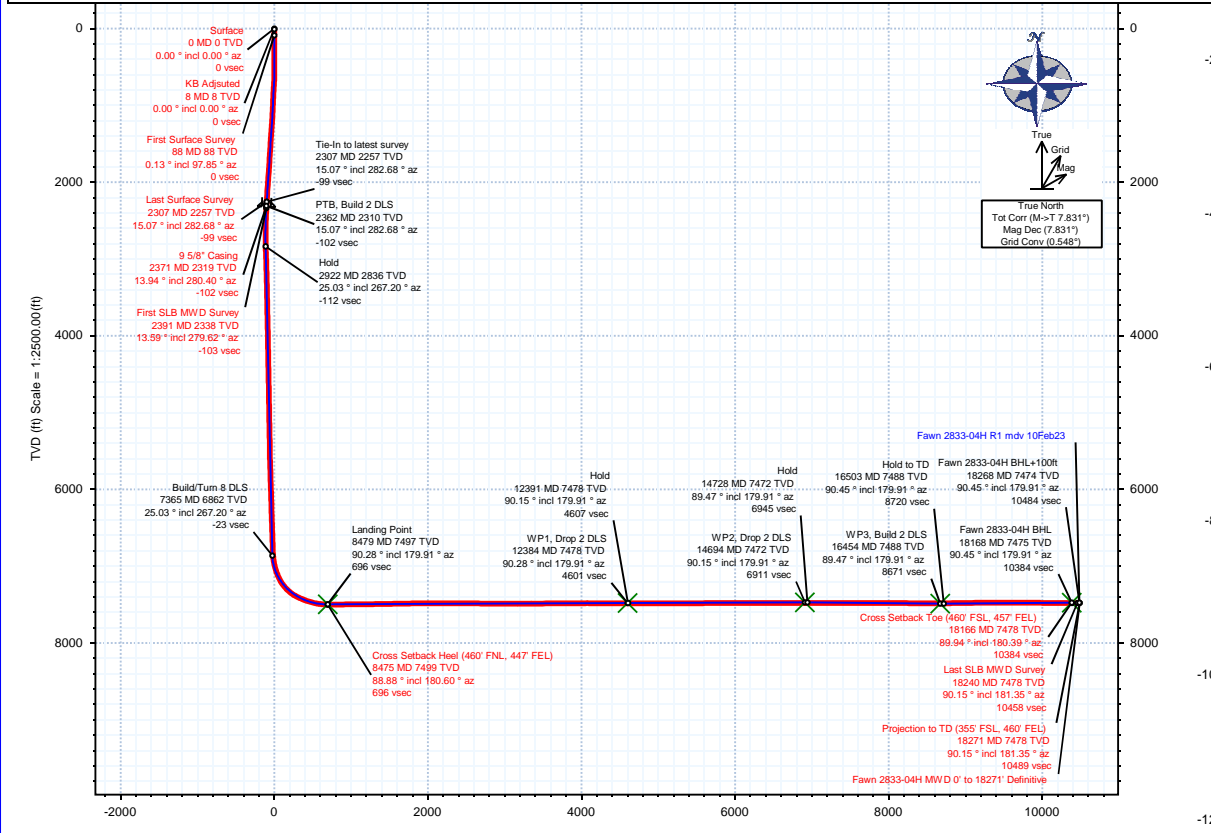


Borehole: Fawn 2833-04H	Well: Fawn 2833-04H	Field: CO, Weld County (NAD 83 NZ) - 2019	Structure: Verdad Resources 22-01N-65W (Fawn 2833-2734 Pad)
-----------------------------------	-------------------------------	---	---

Gravity & Magnetic Parameters		Surface Location			NAD83 Colorado State Plane, Northern Zone, US Feet		Miscellaneous	
Model: HDGM 2023	Dip: 66.208°	Date: 10-Feb-2023	Lat: N 40 1 49.17	Northing: 1255030.46ftUS	Grid Conv: 0.5483*	Slot: Fawn 2833-04H	TVD Ref: 21ft KB(5125ft above MSL)	
MagDec: 7.831*	FS: 51537.96N	Gravity FS: 998.985mg (9.80665 Based)	Lon: W 104 39 5.13	Easting: 3237621.91ftUS	Scale Fact: 0.99996421	Plan: Fawn 2833-04H MWD 0' to 18271' Definitive		

Target Description	Northing: 1255030.46	Easting: 3237621.91	Latitude: N 40 1 49.17	Longitude: W 104 39 5.13	VSec Azimuth: 179.91	Local Coord
Target Name	Existing	Existing	Existing	Existing	Existing	Existing
Fawn 2833-2733 Sec 34-01N-65W	N 40 1 49.17	W 104 39 5.75	1255030.14	3237573.91	5125.00	-48.00
Fawn 2833-2733 Sec 37-01N-65W	N 40 1 49.17	W 104 39 5.75	1255030.14	3237573.91	5125.00	-48.00
Fawn 2833-2733 Sec 22-01N-65W	N 40 1 49.17	W 104 39 5.75	1255030.14	3237573.91	5125.00	-48.00
Fawn 2833-2733 Sec 33-01N-65W	N 40 1 49.17	W 104 39 5.75	1255030.14	3237573.91	5125.00	-48.00
Fawn 2833-2733 Half Sec 28-33-01N-65W	N 40 1 49.17	W 104 39 5.75	1255030.14	3237573.91	5125.00	-48.00
Fawn 2833-2733 Pad Setback	N 40 1 49.17	W 104 39 5.75	1255030.14	3237573.91	5125.00	-48.00
Fawn 2833-2733 Sec 28-01N-65W	N 40 1 49.17	W 104 39 5.75	1255030.14	3237573.91	5125.00	-48.00
Fawn 2833-04H WIP2	N 40 1 40.83	W 104 39 40.39	1245069.52	3234944.74	7472.00	-6915.26
Fawn 2833-04H WIP3	N 40 0 6.50	W 104 39 40.32	1244616.42	3234983.47	7475.00	-10384.39
Fawn 2833-04H WIP1	N 40 1 3.66	W 104 39 40.44	1250399.30	3234818.99	7478.00	-2747.22
Fawn 2833-04H WIP3	N 40 0 23.44	W 104 39 40.35	1245323.70	3234984.39	7485.00	-8670.34
Fawn 2833-04H LP	N 40 1 42.25	W 104 39 40.53	1254303.91	3234875.45	7497.00	-695.94

Critical Point	MD	INCL	AZIM	TVD	VSEC	N(+)/S(-)	E(+)/W(-)	DLS
Surface	0.00	0.00	0.00	0.00	0.00	0.00	0.00	0.00
KB Adjusted	8.00	0.00	0.00	8.00	0.00	0.00	0.00	0.00
First Surface Survey	88.00	0.13	97.85	88.00	0.01	-0.01	0.09	0.16
Last Surface Survey	2307.00	15.07	282.68	2256.73	-98.62	98.03	-374.75	2.47
9 5/8" Casing	2371.00	13.94	280.40	2318.69	-101.86	101.25	-390.45	1.98
First SLB MWD Survey	2391.00	13.59	279.62	2338.11	-102.70	102.07	-395.13	1.98
Cross Setback Heel (460' FNL, 447' FEL)	8475.23	88.88	180.60	7498.72	695.71	-700.01	-2737.22	4.40
Cross Setback Toe (460' FSL, 457' FEL)	18165.93	89.94	180.39	7478.28	10384.42	-10388.72	-2731.99	1.33
Last SLB MWD Survey	18240.00	90.15	181.35	7478.22	10458.48	-10462.78	-2733.11	1.33
Projection to TD (355' FSL, 460' FEL)	18271.00	90.15	181.35	7478.14	10489.47	-10493.77	-2733.84	0.00





Fawn 2833-04H MWD 0' to 18271' Definitive Survey Geodetic Report

(Def Survey)

Report Date: February 21, 2023 - 11:27 AM
Client: Verdad Resources
Field: CO, Weld County (NAD 83 NZ) - 2019
Structure / Slot: Verdad Resources 22-01N-65W (Fawn 2833-2734 Pad) / Fawn 2833-04H
Well: Fawn 2833-04H
Borehole: Fawn 2833-04H
UWI / API#: Unknown / 05-123-51848
Survey Name: Fawn 2833-04H MWD 0' to 18271' Definitive
Survey Date: February 10, 2023
Tort / AHD / DDI / ERD Ratio: 249.534 ° / 13072.033 ft / 6.900 / 1.743
Coordinate Reference System: NAD83 Colorado State Plane, Northern Zone, US Feet
Location Lat / Long: N 40° 1' 49.170377", W 104° 39' 5.13109"
Location Grid N/E Y/X: N 1255030.460 ftUS, E 3237621.910 ftUS
CRS Grid Convergence Angle: 0.5483 °
Grid Scale Factor: 0.99996421
Version / Patch: 2.10.834.0

Survey / DLS Computation: Minimum Curvature / Lubinski
Vertical Section Azimuth: 179.910 ° (True North)
Vertical Section Origin: 0.000 ft, 0.000 ft
TVD Reference Datum: 21ft KB
TVD Reference Elevation: 5125.000 ft above MSL
Seabed / Ground Elevation: 5104.000 ft above MSL
Magnetic Declination: 7.831 °
Total Gravity Field Strength: 998.9848mgn (9.80665 Based)
Gravity Model: GARM
Total Magnetic Field Strength: 51537.960 nT
Magnetic Dip Angle: 66.208 °
Declination Date: February 10, 2023
Magnetic Declination Model: HDGM 2023
North Reference: True North
Grid Convergence Used: 0.0000 °
Total Corr Mag North->True North: 7.8313 °
Local Coord Referenced To: Well Head

Comments	MD (ft)	Incl (°)	Azim True (°)	TVD (ft)	VSEC (ft)	NS (ft)	EW (ft)	DLS (°/100ft)	Northing (ftUS)	Easting (ftUS)	Latitude (°)	Longitude (°)
Surface	0.00	0.00	0.00	0.00	0.00	0.00	0.00	N/A	1255030.46	3237621.91	40.030325	-104.651425
KB Adjusted	8.00	0.00	0.00	8.00	0.00	0.00	0.00	0.00	1255030.46	3237621.91	40.030325	-104.651425
First Surface Survey	88.00	0.13	97.85	88.00	0.01	-0.01	0.09	0.16	1255030.45	3237622.00	40.030325	-104.651425
	179.00	0.09	166.76	179.00	0.10	-0.10	0.21	0.14	1255030.37	3237622.12	40.030325	-104.651425
	271.00	0.13	128.79	271.00	0.23	-0.23	0.31	0.09	1255030.23	3237622.22	40.030324	-104.651424
	362.00	0.48	137.05	362.00	0.58	-0.58	0.65	0.39	1255029.89	3237622.56	40.030324	-104.651423
	452.00	0.53	140.04	451.99	1.17	-1.17	1.17	0.06	1255029.30	3237623.09	40.030322	-104.651421
	541.00	0.57	108.92	540.99	1.63	-1.63	1.85	0.33	1255028.85	3237623.78	40.030321	-104.651419
	631.00	2.55	299.65	630.97	0.78	-0.78	0.54	3.46	1255029.68	3237622.45	40.030323	-104.651423
	722.00	5.45	303.69	721.73	-2.62	2.62	-4.82	3.20	1255033.03	3237617.07	40.030332	-104.651443
	812.00	6.72	297.36	811.23	-7.43	7.41	-13.05	1.59	1255037.74	3237608.79	40.030345	-104.651472
	902.00	7.60	292.97	900.53	-12.19	12.15	-23.21	1.15	1255042.39	3237598.59	40.030358	-104.651508
	992.00	8.83	286.46	989.60	-16.48	16.43	-35.31	1.71	1255046.55	3237586.44	40.030370	-104.651551
	1082.00	11.82	283.47	1078.13	-20.61	20.53	-50.91	3.37	1255050.51	3237570.81	40.030381	-104.651607
	1172.00	13.01	283.04	1166.03	-25.08	24.97	-69.74	1.33	1255054.76	3237551.94	40.030394	-104.651674
	1262.00	15.03	284.44	1253.34	-30.31	30.16	-90.91	2.28	1255059.75	3237530.72	40.030408	-104.651750
	1352.00	15.69	284.97	1340.13	-36.40	36.22	-113.97	0.75	1255065.58	3237507.60	40.030425	-104.651832
	1442.00	16.57	284.18	1426.58	-42.72	42.50	-138.17	1.01	1255071.64	3237483.35	40.030442	-104.651919
	1532.00	16.83	281.81	1512.79	-48.57	48.32	-163.37	0.81	1255077.21	3237458.10	40.030458	-104.652009
	1622.00	15.73	281.63	1599.18	-53.74	53.44	-188.07	1.22	1255082.10	3237433.35	40.030472	-104.652097
	1712.00	16.66	283.21	1685.61	-59.18	58.85	-212.58	1.14	1255087.27	3237408.79	40.030487	-104.652184
	1802.00	15.78	282.86	1772.02	-64.89	64.52	-237.07	0.98	1255092.71	3237384.24	40.030502	-104.652272
	1892.00	16.70	283.65	1858.43	-70.71	70.30	-261.57	1.05	1255098.25	3237359.69	40.030518	-104.652359
	1982.00	16.52	282.68	1944.68	-76.61	76.16	-286.62	0.37	1255103.87	3237334.59	40.030534	-104.652449
	2072.00	16.39	284.62	2030.99	-82.66	82.17	-311.39	0.63	1255109.64	3237309.76	40.030551	-104.652537
	2162.00	16.17	283.91	2117.38	-88.92	88.39	-335.84	0.33	1255115.63	3237285.25	40.030568	-104.652625
	2252.00	16.35	284.35	2203.78	-95.11	94.54	-360.27	0.24	1255121.55	3237260.76	40.030585	-104.652712
Last Surface Survey	2307.00	15.07	282.68	2256.73	-98.62	98.03	-374.75	2.47	1255124.89	3237246.25	40.030594	-104.652764
9 5/8" Casing	2371.00	13.94	280.40	2318.69	-101.86	101.25	-390.45	1.98	1255127.96	3237230.52	40.030603	-104.652820
First SLB MWD Survey	2391.00	13.59	279.62	2338.11	-102.70	102.07	-395.13	1.98	1255128.75	3237225.83	40.030605	-104.652836
	2480.00	13.86	278.96	2424.57	-106.13	105.48	-415.97	0.35	1255131.95	3237204.96	40.030615	-104.652911
	2570.00	14.78	276.51	2511.78	-109.15	108.46	-438.03	1.22	1255134.72	3237182.88	40.030623	-104.652989
	2659.00	16.14	274.02	2597.55	-111.34	110.61	-461.65	1.70	1255136.65	3237159.24	40.030629	-104.653074
	2749.00	18.08	271.49	2683.57	-112.62	111.85	-488.09	2.31	1255137.63	3237132.79	40.030632	-104.653168
	2838.00	20.20	267.81	2767.65	-112.44	111.63	-517.26	2.74	1255137.13	3237103.63	40.030632	-104.653272
	2928.00	23.02	265.35	2851.31	-110.47	109.61	-550.33	3.29	1255134.79	3237070.57	40.030626	-104.653391
	3017.00	24.83	264.68	2932.66	-107.38	106.46	-586.29	2.06	1255131.30	3237034.65	40.030617	-104.653519
	3107.00	25.40	265.68	3014.15	-104.24	103.26	-624.35	0.79	1255127.73	3236996.63	40.030609	-104.653655
	3197.00	25.55	266.75	3095.40	-101.74	100.70	-662.97	0.54	1255124.81	3236958.03	40.030602	-104.653793
	3286.00	25.47	267.16	3175.73	-99.76	98.66	-701.25	0.23	1255122.40	3236919.77	40.030596	-104.653929
	3376.00	25.68	267.68	3256.91	-98.08	96.92	-740.06	0.34	1255120.29	3236880.98	40.030591	-104.654068
	3465.00	25.53	267.21	3337.17	-96.43	95.20	-778.49	0.29	1255118.21	3236842.58	40.030586	-104.654205
	3555.00	25.33	267.49	3418.45	-94.70	93.41	-817.09	0.26	1255116.05	3236803.99	40.030581	-104.654343
	3644.00	25.51	267.51	3498.83	-93.09	91.75	-855.26	0.20	1255114.02	3236765.84	40.030577	-104.654479
	3733.00	25.37	267.43	3579.20	-91.46	90.06	-893.45	0.16	1255111.96	3236727.67	40.030572	-104.654616
	3823.00	25.03	266.62	3660.64	-89.53	88.07	-931.72	0.53	1255109.61	3236689.43	40.030567	-104.654752
	3912.00	25.08	267.65	3741.26	-87.71	86.19	-969.36	0.49	1255107.36	3236651.81	40.030562	-104.654887
	4002.00	25.61	267.21	3822.60	-86.04	84.46	-1007.84	0.63	1255105.26	3236613.34	40.030557	-104.655024
	4091.00	25.54	267.69	3902.88	-84.39	82.74	-1046.23	0.25	1255103.19	3236574.98	40.030552	-104.655161
	4181.00	25.40	267.89	3984.13	-82.96	81.25	-1084.90	0.19	1255101.32	3236536.32	40.030548	-104.655299
	4270.00	23.98	268.80	4065.00	-81.93	80.17	-1122.06	1.65	1255099.89	3236499.18	40.030545	-104.655432
	4360.00	23.84	266.89	4147.28	-80.62	78.80	-1158.50	0.87	1255098.17	3236462.75	40.030541	-104.655562
	4450.00	25.59	267.57	4229.03	-78.87	76.99	-1196.09	1.97	1255096.00	3236425.18	40.030536	-104.655696
	4539.00	25.57	267.62	4309.30	-77.32	75.38	-1234.49	0.03	1255094.02	3236386.81	40.030532	-104.655834
	4629.00	25.54	267.62	4390.50	-75.77	73.77	-1273.27	0.04	1255092.04	3236348.04	40.030528	-104.655972
	4718.00	25.69	267.89	4470.75	-74.32	72.26	-1311.72	0.21	1255090.16	3236309.61	40.030523	-104.656109
	4808.00	25.64	267.77	4551.88	-72.90	70.78	-1350.67	0.08	1255088.31	3236270.68	40.030519	-104.656248
	4897.00	25.13	267.73	4632.28	-71.47	69.29	-1388.80	0.57	1255086.45	3236232.56	40.030515	-104.656385
	4987.00	25.72	268.21	4713.56	-70.16	67.92	-1427.41	0.69	1255084.71	3236193.96	40.030511	-104.656523
	5076.00	25.75	267.71	4793.73	-68.84	66.54	-1466.03	0.25	1255082.97	3236155.36	40.030508	-104.656660
	5166.00	25.29	267.78	4874.95	-67.38	65.01	-1504.78	0.51	1255081.07	3236116.63	40.030503	-104.656799
	5255.00	25.76	267.96	4956.26	-66.01	63.59	-1543.11	0.54	1255079.28	3236078.32	40.030500	-104.656936
	5345.00	25.67	267.59	5036.35	-64.56	62.07	-1582.13	0.21	1255077.39	3236039.32	40.030495	-104.657075
	5434.00	25.55	268.28	5116.61	-63.23	60.68	-1620.58	0.37	1255075.63	3236000.89	40.030492	-104.657212
	5524.00	25.05	268.41	5197.97	-62.18	59.57	-1659.02	0.56	1255074.15	3235962.46	40.030488	-104.657350
	5613.00	26.00	267.03	5278.29	-60.70	58.04	-1697.34	1.26	1255072.25	3235924.12	40.030484	-104.657486
	5702.00	25.77	267.36	5358.36	-58.86	56.13	-1736.14	0.31	1255069.98	3235885.38	40.030479	-104.657625
	5792.00	25.19	268.29	5439.61	-57.45	54.66	-1774.83	0.78	1255068.13	3235846.71	40.030475	-104.657763
	5882.00	25.72	268.71	5520.87	-56.50	53.65	-1813.49	0.62	1255066.76	3235808.06	40.030472	-104.657901
	5971.00	26.05	266.61	5600.95	-54.97	52.06	-1852.30	1.10	1255064.79	3235769.26	40.030468	-104.658040
	6060.00	25.85	266.57	5681.04	-52.73	49.76	-1891.04	0.44	1255062.12	3235730.55	40.030461	-104.658178
	6150.00	25.92	266.36	5762.08	-50.37	47.34	-1930.11	0.31	1255059.33	3235691.50	40.030455	-104.658318
	6240.00	25.72	266.17	5843.10	-47.88	44.79	-1969.23	0.24	1255056.40	3235652.42	40.03044	

Comments	MD (ft)	Incl (°)	Azim True (°)	TVD (ft)	VSEC (ft)	NS (ft)	EW (ft)	DLS (°/100ft)	Northing (ftUS)	Easting (ftUS)	Latitude (°)	Longitude (°)
	6508.00	25.62	266.46	6085.12	-40.24	36.97	-2084.05	0.69	1255047.48	3235537.68	40.030426	-104.658867
	6598.00	25.97	266.62	6166.15	-37.94	34.60	-2123.15	0.39	1255044.74	3235498.61	40.030420	-104.659007
	6687.00	24.76	266.56	6246.57	-35.73	32.33	-2161.20	1.35	1255042.11	3235460.58	40.030414	-104.659143
	6777.00	25.22	265.08	6328.15	-33.01	29.56	-2199.13	0.86	1255038.97	3235422.68	40.030406	-104.659278
	6866.00	25.74	266.11	6408.49	-30.13	26.62	-2237.30	0.76	1255035.67	3235384.54	40.030398	-104.659415
	6956.00	25.67	266.07	6489.58	-27.53	23.96	-2276.24	0.07	1255032.63	3235346.63	40.030391	-104.659554
	7045.00	24.96	266.78	6570.04	-25.22	21.58	-2314.23	0.87	1255029.90	3235307.67	40.030384	-104.659689
	7134.00	25.26	265.54	6650.62	-22.74	19.05	-2351.91	0.69	1255027.00	3235270.02	40.030377	-104.659824
	7224.00	24.97	266.68	6732.11	-20.21	16.46	-2390.02	0.63	1255024.04	3235231.93	40.030370	-104.659960
	7313.00	23.70	264.21	6813.20	-17.37	13.56	-2426.58	1.83	1255020.80	3235195.40	40.030362	-104.660090
	7403.00	23.34	254.91	6895.76	-10.96	7.10	-2461.80	4.14	1255014.00	3235160.25	40.030344	-104.660216
	7492.00	22.68	240.87	6977.74	1.94	-5.86	-2493.84	6.20	1255000.74	3235128.34	40.030309	-104.660331
	7582.00	26.53	227.40	7059.61	23.97	-27.93	-2523.82	7.53	1254978.38	3235098.56	40.030248	-104.660438
	7680.00	29.90	215.95	7146.02	58.55	-62.56	-2554.31	6.49	1254943.46	3235068.42	40.030153	-104.660547
	7784.00	38.39	209.10	7232.05	107.81	-111.87	-2585.30	8.95	1254893.86	3235037.90	40.030018	-104.660657
	7874.00	47.30	206.31	7297.97	161.94	-166.04	-2613.61	10.12	1254839.42	3235010.11	40.029869	-104.660758
	7963.00	56.07	205.99	7353.10	224.52	-228.67	-2644.34	9.86	1254776.50	3234979.98	40.029697	-104.660868
	8053.00	64.69	199.73	7397.57	296.51	-300.72	-2674.52	11.32	1254704.18	3234950.50	40.029499	-104.660976
	8142.00	68.96	194.52	7432.61	374.63	-378.87	-2698.53	7.21	1254625.80	3234927.23	40.029285	-104.661061
	8232.00	73.04	190.93	7461.91	457.58	-461.85	-2717.24	5.90	1254542.65	3234909.32	40.029057	-104.661128
	8321.00	78.49	187.29	7483.80	542.70	-546.99	-2730.86	7.29	1254457.39	3234896.51	40.028823	-104.661177
	8411.00	86.07	180.31	7495.89	631.56	-635.86	-2736.71	11.40	1254368.47	3234891.51	40.028579	-104.661198
Cross Setback Heel (460' FNL, 447' FEL)	8475.23	88.88	180.60	7498.72	695.71	-700.01	-2737.22	4.40	1254304.32	3234891.62	40.028403	-104.661199
	8500.00	89.97	180.71	7498.97	720.48	-724.78	-2737.50	4.40	1254279.54	3234891.57	40.028335	-104.661200
	8590.00	90.38	180.98	7498.70	810.47	-814.77	-2738.82	0.55	1254189.55	3234891.11	40.028088	-104.661205
	8679.00	90.21	181.76	7498.24	899.44	-903.74	-2740.95	0.90	1254100.56	3234889.84	40.027844	-104.661213
	8768.00	90.55	182.65	7497.66	988.36	-992.67	-2744.38	1.07	1254011.61	3234887.26	40.027600	-104.661225
	8858.00	91.16	180.90	7496.31	1078.30	-1082.62	-2747.17	2.06	1253921.64	3234885.33	40.027353	-104.661235
	8947.00	90.44	180.39	7495.07	1167.28	-1171.60	-2748.17	0.99	1253832.66	3234885.18	40.027109	-104.661238
	9037.00	90.28	179.65	7494.50	1257.28	-1261.60	-2748.21	0.85	1253742.67	3234886.00	40.026861	-104.661238
	9126.00	91.11	179.08	7493.42	1346.27	-1350.59	-2747.22	1.13	1253653.70	3234887.85	40.026617	-104.661235
	9215.00	90.95	179.23	7491.82	1435.25	-1439.56	-2745.90	0.24	1253564.74	3234890.02	40.026373	-104.661230
	9305.00	91.08	180.12	7490.22	1525.23	-1529.55	-2745.39	1.01	1253474.77	3234891.39	40.026126	-104.661228
	9394.00	91.02	179.65	7488.59	1614.22	-1618.53	-2745.21	0.53	1253385.80	3234892.41	40.025882	-104.661228
	9484.00	91.08	180.42	7486.93	1704.20	-1708.51	-2745.27	0.86	1253295.82	3234893.22	40.025635	-104.661228
	9573.00	91.15	179.78	7485.20	1793.18	-1797.50	-2745.42	0.72	1253206.84	3234893.92	40.025390	-104.661228
	9663.00	91.01	179.16	7483.51	1883.16	-1887.48	-2744.60	0.70	1253116.88	3234895.61	40.025143	-104.661225
	9752.00	90.32	179.20	7482.47	1972.15	-1976.46	-2743.33	0.77	1253027.91	3234897.73	40.024899	-104.661221
	9841.00	90.14	178.12	7482.12	2061.13	-2065.44	-2741.25	1.23	1252938.97	3234900.65	40.024655	-104.661213
	9931.00	90.07	178.24	7481.95	2151.09	-2155.39	-2738.39	0.15	1252849.05	3234904.37	40.024408	-104.661203
	10021.00	90.23	178.18	7481.72	2241.05	-2245.35	-2735.58	0.19	1252759.13	3234908.04	40.024161	-104.661193
	10110.00	89.42	179.25	7481.99	2330.02	-2334.32	-2733.58	1.51	1252670.18	3234910.89	40.023917	-104.661186
	10200.00	89.39	178.72	7482.92	2420.01	-2424.30	-2731.99	0.59	1252580.22	3234913.35	40.023670	-104.661180
	10289.00	89.32	179.19	7483.92	2508.99	-2513.28	-2730.36	0.54	1252491.26	3234915.82	40.023426	-104.661174
	10379.00	89.45	180.86	7484.89	2598.98	-2603.27	-2730.40	1.86	1252401.28	3234916.65	40.023179	-104.661174
	10469.00	89.39	181.50	7485.80	2688.95	-2693.25	-2732.26	0.72	1252311.29	3234915.65	40.022932	-104.661181
	10558.00	89.28	181.30	7486.83	2778.92	-2768.22	-2734.44	0.26	1252222.31	3234914.33	40.022687	-104.661189
	10648.00	89.68	182.39	7487.65	2867.86	-2857.16	-2737.34	1.29	1252132.34	3234912.29	40.022440	-104.661199
	10737.00	89.83	182.37	7488.03	2956.78	-2946.10	-2741.03	0.17	1252043.39	3234909.44	40.022196	-104.661212
	10827.00	89.90	180.42	7488.24	3046.74	-3035.05	-2743.22	2.17	1251953.41	3234908.11	40.021949	-104.661220
	10916.00	90.59	181.02	7487.86	3135.73	-3140.05	-2744.34	1.03	1251864.42	3234907.85	40.021705	-104.661224
	11006.00	90.02	181.31	7487.38	3225.71	-3230.03	-2746.16	0.71	1251774.43	3234906.88	40.021458	-104.661230
	11096.00	89.82	179.84	7487.50	3315.70	-3320.02	-2747.07	1.65	1251684.43	3234906.84	40.021211	-104.661234
	11185.00	90.71	180.13	7487.09	3404.70	-3409.02	-2747.05	1.05	1251595.44	3234907.71	40.020967	-104.661233
	11275.00	90.77	180.34	7485.93	3494.69	-3499.01	-2747.42	0.25	1251505.45	3234908.21	40.020720	-104.661235
	11364.00	90.66	180.55	7484.82	3583.68	-3588.00	-2748.11	0.27	1251416.46	3234908.36	40.020475	-104.661237
	11453.00	90.55	179.54	7483.88	3672.67	-3676.99	-2748.18	1.15	1251327.48	3234909.14	40.020231	-104.661237
	11543.00	90.62	180.61	7482.97	3762.66	-3766.99	-2748.29	1.20	1251237.49	3234909.89	40.019984	-104.661238
	11633.00	90.40	179.88	7482.17	3852.66	-3856.98	-2748.68	0.85	1251147.50	3234910.37	40.019737	-104.661239
	11722.00	90.09	179.30	7481.79	3942.66	-3946.98	-2748.04	0.74	1251058.52	3234911.86	40.019493	-104.661237
	11812.00	90.21	180.68	7481.55	4032.65	-4036.97	-2748.02	1.54	1250968.53	3234912.74	40.019246	-104.661237
	11901.00	89.78	179.16	7481.56	4122.65	-4126.97	-2747.90	1.78	1250879.54	3234913.71	40.019001	-104.661236
	11991.00	89.92	178.50	7482.58	4212.63	-4216.95	-2746.06	1.20	1250789.59	3234916.42	40.018754	-104.661230
	12080.00	89.36	179.30	7483.92	4299.60	-4303.92	-2744.35	1.03	1250700.64	3234918.97	40.018510	-104.661223
	12170.00	90.40	180.86	7484.10	4389.60	-4393.91	-2744.47	2.08	1250610.65	3234919.71	40.018263	-104.661224
	12259.00	90.19	179.20	7483.65	4479.59	-4473.91	-2744.52	1.88	1250521.66	3234920.52	40.018019	-104.661224
	12349.00	90.03	179.35	7483.47	4569.59	-4559.50	-2743.38	0.24	1250431.69	3234922.52	40.017772	-104.661220
	12438.00	90.06	179.38	7483.40	4659.58	-4649.50	-2742.40	0.05	1250342.71	3234924.35	40.017527	-104.661216
	12528.00	90.04	179.72	7483.32	4749.58	-4739.58	-2741.69	0.38	1250252.73	3234925.92	40.017280	-104.661214
	12617.00	90.25	179.66	7483.10	4839.58	-4829.58	-2741.21	0.25	1250163.74	3234927.25	40.017036	-104.661212
	12707.00	90.04	179.12	7482.87	4929.58	-4919.58	-2740.26	0.65	1250073.76	3234928.06	40.016789	-104.661209
	12796.00	90.28	180.67	7482.62	5019.57	-5009.57	-2740.10	1.76	1249984.78	3234930.08	40.016545	-104.661208
	12885.00	90.05	179.78	7482.37	5109.57	-5099.57	-2740.45	1.03	1249895.78	3234930.57	40.016300	-104.661209
	12975.00	89.92	180.43	7482.39	5199.57	-5189.57	-2740.62	0.73	1249806.79	3234931.27	40.016053	-104.661210
	13064.00	90.06	179.74	7482.41	5289.57	-5279.57	-2740.76	0.79	1249717.80	3234931.98	40.015809	-104.661210
	13154.00	90.18	179.89	7482.21	5379.57	-5369.57	-2740.47	0.21	1249628.81	3234933.13	40.015562	-104.661209
	13243.00	90.27	179.53	7481.86	5469.57	-5459.57	-2740.01	0.41	1249539.82	3234934.44	40.015318	-104.661208
	13332.00	90.03	178.74									

Comments	MD (ft)	Incl (°)	Azim True (°)	TVD (ft)	VSEC (ft)	NS (ft)	EW (ft)	DLS (°/100ft)	Northing (ftUS)	Easting (ftUS)	Latitude (°)	Longitude (°)
	16017.00	89.21	179.60	7481.45	8235.94	-8240.26	-2740.27	1.13	1246764.67	3234960.72	40.007705	-104.661207
	16106.00	88.75	179.37	7483.04	8324.92	-8329.24	-2739.48	0.58	1246675.70	3234962.37	40.007460	-104.661204
	16196.00	89.50	178.76	7484.41	8414.90	-8419.21	-2738.01	1.08	1246585.75	3234964.70	40.007213	-104.661199
	16285.00	90.47	179.01	7484.44	8503.89	-8508.20	-2736.27	1.13	1246496.79	3234967.28	40.006969	-104.661193
	16375.00	90.35	177.15	7483.79	8593.84	-8598.14	-2733.26	2.08	1246406.88	3234971.16	40.006722	-104.661182
	16465.00	90.38	178.74	7483.21	8683.78	-8688.08	-2730.03	1.77	1246316.99	3234975.25	40.006475	-104.661171
	16554.00	90.99	180.27	7482.14	8772.77	-8777.06	-2729.25	1.85	1246228.01	3234976.87	40.006231	-104.661168
	16644.00	90.76	179.78	7480.76	8862.76	-8867.05	-2729.29	0.60	1246138.03	3234977.69	40.005984	-104.661168
	16733.00	90.88	179.13	7479.48	8951.74	-8956.04	-2728.45	0.75	1246049.06	3234979.39	40.005740	-104.661165
	16823.00	90.73	178.81	7478.22	9041.72	-9046.02	-2726.83	0.39	1245959.11	3234981.87	40.005493	-104.661159
	16912.00	90.92	178.66	7476.93	9130.69	-9134.98	-2724.86	0.28	1245870.16	3234984.69	40.005248	-104.661152
	17001.00	90.55	179.94	7475.79	9219.68	-9223.97	-2723.77	1.50	1245781.20	3234986.64	40.005004	-104.661148
	17091.00	90.62	180.76	7474.88	9308.67	-9313.96	-2724.31	0.91	1245691.21	3234986.95	40.004757	-104.661150
	17180.00	90.51	180.89	7474.00	9398.66	-9402.95	-2725.59	0.19	1245602.22	3234986.52	40.004513	-104.661155
	17270.00	89.90	180.71	7473.68	9488.64	-9492.94	-2726.86	0.70	1245512.22	3234986.12	40.004266	-104.661159
	17359.00	90.16	179.45	7473.64	9578.64	-9581.94	-2726.98	1.45	1245423.23	3234986.84	40.004022	-104.661159
	17449.00	89.45	179.28	7473.94	9667.64	-9671.93	-2725.99	0.82	1245333.25	3234988.70	40.003774	-104.661156
	17538.00	89.03	178.83	7475.13	9756.62	-9760.91	-2724.53	0.69	1245244.30	3234991.01	40.003530	-104.661151
	17628.00	89.25	179.73	7476.48	9846.60	-9850.89	-2723.41	1.03	1245154.33	3234993.00	40.003283	-104.661147
	17717.00	89.94	181.55	7477.12	9935.59	-9939.88	-2724.40	2.18	1245065.34	3234992.85	40.003039	-104.661150
	17807.00	89.16	179.98	7477.82	10025.57	-10029.86	-2725.60	1.95	1244975.35	3234992.51	40.002792	-104.661154
	17896.00	89.59	181.56	7478.79	10114.55	-10118.85	-2726.80	1.84	1244886.36	3234992.17	40.002548	-104.661159
	17985.00	90.08	180.81	7479.05	10203.53	-10207.83	-2728.64	1.01	1244797.37	3234991.18	40.002303	-104.661165
	18075.00	90.48	181.55	7478.61	10293.51	-10297.81	-2730.49	0.94	1244707.39	3234990.19	40.002056	-104.661172
	18164.00	89.94	180.37	7478.28	10382.49	-10386.79	-2731.98	1.47	1244618.39	3234989.55	40.001812	-104.661177
Cross Setback Toe (460' FSL, 457' FEL)	18165.93	89.94	180.39	7478.28	10384.42	-10388.72	-2731.99	1.33	1244616.47	3234989.56	40.001807	-104.661177
Last SLB MWD Survey Projection to TD (355' FSL, 460' FEL)	18240.00	90.15	181.35	7478.22	10458.48	-10462.78	-2733.11	1.33	1244542.40	3234989.14	40.001604	-104.661181
	18271.00	90.15	181.35	7478.14	10489.47	-10493.77	-2733.84	0.00	1244511.40	3234988.71	40.001518	-104.661184

Survey Type: Def Survey

Survey Error Model: ISCWSA Rev 3 *** 3-D 97.071% Confidence 3.0000 sigma
 Survey Program:

Description	Part	MD From (ft)	MD To (ft)	EOU Freq (ft)	Hole Size (in)	Casing Diameter (in)	Survey Tool Type	Borehole / Survey
	1	0.000	8.000	1/98.425	13.500	9.625	A001Mb_MWD-Depth Only	Fawn 2833-04H / Fawn 2833-04H MWD 0' to 18271' Definitive
	1	8.000	21.000	Act Stns	13.500	9.625	A001Mb_MWD-Depth Only	Fawn 2833-04H / Fawn 2833-04H MWD 0' to 18271' Definitive
	1	21.000	2307.000	Act Stns	13.500	9.625	A001Mb_MWD	Fawn 2833-04H / Fawn 2833-04H MWD 0' to 18271' Definitive
	1	2307.000	18271.000	Act Stns	8.500	5.500	B001Mb_MWD+HRGM	Fawn 2833-04H / Fawn 2833-04H MWD 0' to 18271' Definitive