



Verdad Resources

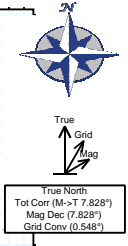
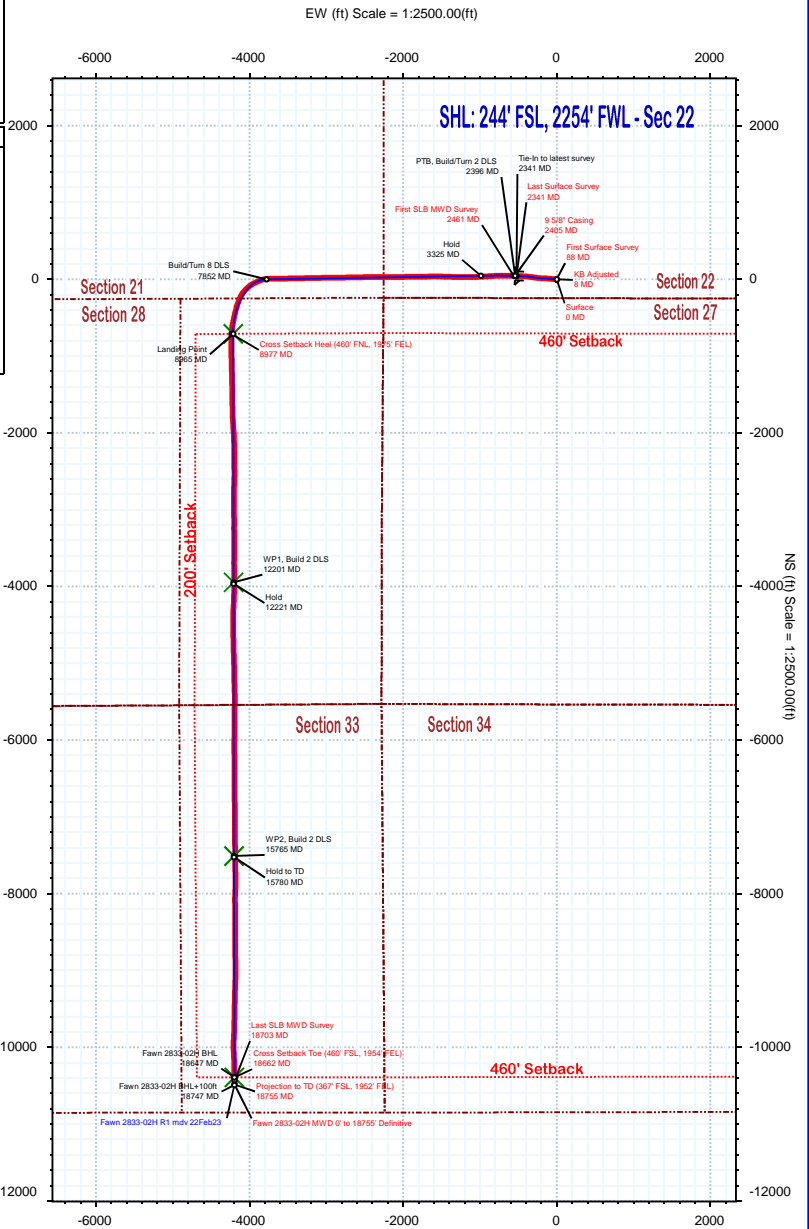
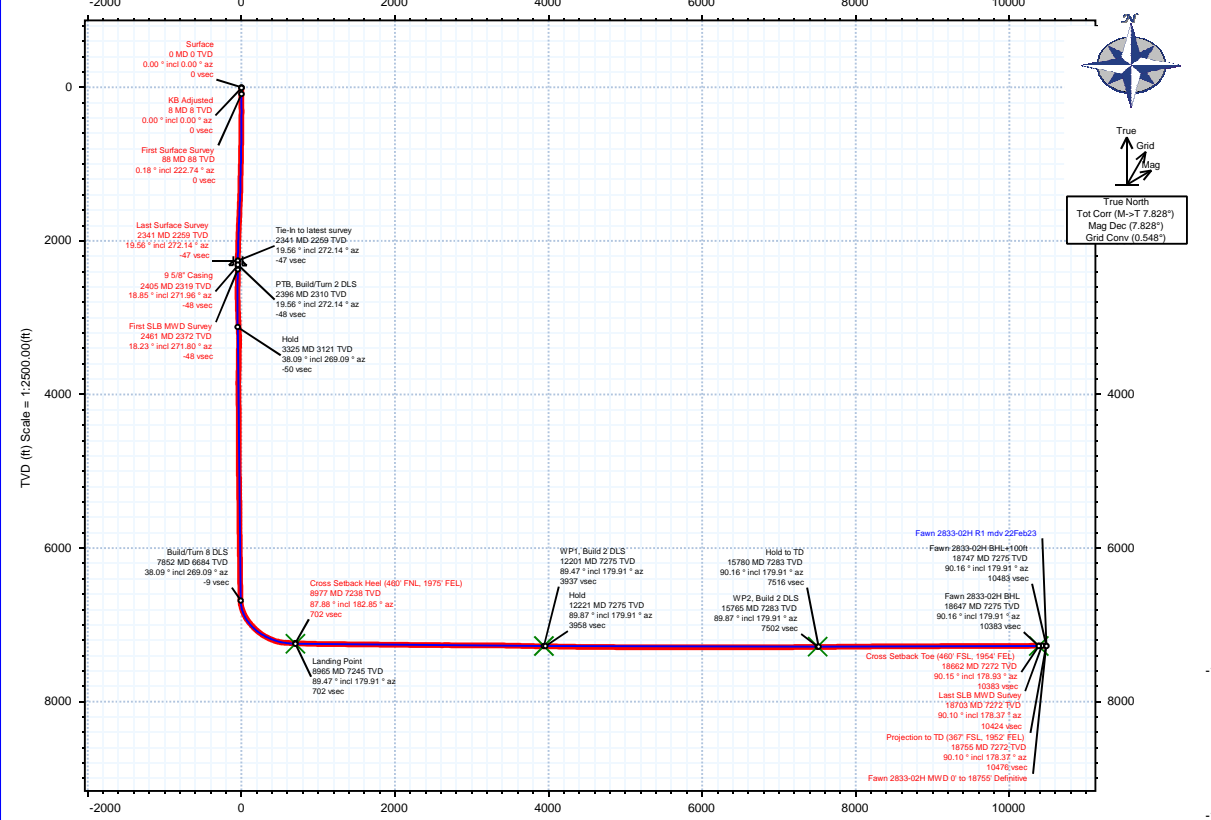


Borehole: Fawn 2833-02H	Well: Fawn 2833-02H	Field: CO, Weld County (NAD 83 NZ) - 2019	Structure: Verdad Resources 22-01N-65W (Fawn 2833-2734 Pad)
-----------------------------------	-------------------------------	---	---

Gravity & Magnetic Parameters		Surface Location			NAD83 Colorado State Plane, Northern Zone, US Feet		Miscellaneous	
Model: HDGM 2023	Dip: 66.206°	Date: 22-Feb-2023	Lat: N 40 1 49.17	Northing: 1255030.25ftUS	Grid Conv: 0.5482*	Slot: Fawn 2833-02H	TVD Ref: 21ft KB(5125ft above MSL)	
MagDec: 7.828°	FS: 51534.429nT	Gravity FS: 998.985mgn (8.0665 Based)	Lon: W 104 39 5.54	Easting: 3237589.91ftUS	Scale Fact: 0.99996421	Plan: Fawn 2833-02H MWD 0° to 18755° Definitive		

Target Name	Target Description	Latitude	Longitude	Northing	Existing	TVD	VSec	N(+)/S(-)	E(+)/W(-)
Fawn 2833-2733 Sec 34-01N-65W		N 40 1 49.17	W 104 39 5.75	1255030.14	3237573.91	5125.00	-0.07	0.04	-16.00
Fawn 2833-2733 Sec 27-01N-65W		N 40 1 49.17	W 104 39 5.75	1255030.14	3237573.91	5125.00	-0.07	0.04	-16.00
Fawn 2833-2733 Sec 22-01N-65W		N 40 1 49.17	W 104 39 5.75	1255030.14	3237573.91	5125.00	-0.07	0.04	-16.00
Fawn 2833-2733 Sec 33-01N-65W		N 40 1 49.17	W 104 39 5.75	1255030.14	3237573.91	5125.00	-0.07	0.04	-16.00
Fawn 2833-2733 Half Sec28-33-01N-65W		N 40 1 49.17	W 104 39 5.75	1255030.14	3237573.91	5125.00	-0.07	0.04	-16.00
Fawn 2833-2733 Pad Setback		N 40 1 49.17	W 104 39 5.75	1255030.14	3237573.91	5125.00	-0.07	0.04	-16.00
Fawn 2833-2733 Sec 28-01N-65W		N 40 1 49.17	W 104 39 5.75	1255030.14	3237573.91	5125.00	-0.07	0.04	-16.00
Fawn 2833-02H LP		N 40 1 42.17	W 104 39 59.69	1254281.88	3233385.06	7245.00		-708.13	-4211.98
Fawn 2833-02H BHL		N 40 0 6.50	W 104 39 59.47	1244601.58	3233493.09	7275.00		-10399.39	-4196.57
Fawn 2833-02H WP1		N 40 1 10.19	W 104 39 59.61	1261046.33	3234211.17	7275.00		3937.89	-4208.53
Fawn 2833-02H WP2		N 40 0 34.97	W 104 39 59.53	1247482.55	3233460.94	7283.00		-7508.13	-4201.16

Critical Point	MD	INCL	AZIM	TVD	VSEC	N(+)/S(-)	E(+)/W(-)	DLS
Surface	0.00	0.00	0.00	0.00	0.00	0.00	0.00	0.00
KB Adjusted	8.00	0.00	0.00	8.00	0.00	0.00	0.00	0.00
First Surface Survey	88.00	0.18	222.74	88.00	0.09	-0.09	-0.09	0.23
Last Surface Survey	2341.00	19.56	272.14	2258.63	-46.88	46.06	-522.12	0.25
9 5/8" Casing	2405.00	18.85	271.96	2319.07	-47.67	46.81	-543.16	1.11
First SLB MWD Survey	2461.00	18.23	271.80	2372.17	-48.28	47.40	-560.96	1.11
Cross Setback Heel (460' FNL, 1975' FEL)	8977.26	87.88	182.85	7237.86	701.65	-708.30	-4233.60	2.85
Cross Setback Toe (460' FSL, 1954' FEL)	18661.62	90.15	178.93	7272.06	10382.85	-10389.45	-4196.67	1.37
Last SLB MWD Survey	18703.00	90.10	178.37	7271.97	10424.21	-10430.82	-4195.70	1.37
Projection to TD (367' FSL, 1952' FEL)	18755.00	90.10	178.37	7271.88	10476.20	-10482.80	-4194.22	0.01





Fawn 2833-02H MWD 0' to 18755' Definitive Survey Geodetic Report



(Def Survey)

Report Date: February 28, 2023 - 04:19 PM
Client: Verdad Resources
Field: CO, Weld County (NAD 83 NZ) - 2019
Structure / Slot: Verdad Resources 22-01N-65W (Fawn 2833-2734 Pad) / Fawn 2833-02H
Well: Fawn 2833-02H
Borehole: Fawn 2833-02H
UWI / API#: Unknown / 05-123-51849
Survey Name: Fawn 2833-02H MWD 0' to 18755' Definitive
Survey Date: February 22, 2023
Tort / AHD / DDI / ERD Ratio: 344.567 ° / 14484.305 ft / 7.108 / 1.986
Coordinate Reference System: NAD83 Colorado State Plane, Northern Zone, US Feet
Location Lat / Long: N 40° 1' 49.17132", W 104° 39' 5.54249"
Location Grid N/E Y/X: N 1255030.250 ftUS, E 3237589.910 ftUS
CRS Grid Convergence Angle: 0.5482 °
Grid Scale Factor: 0.99996421
Version / Patch: 2.10.834.0

Survey / DLS Computation: Minimum Curvature / Lubinski
Vertical Section Azimuth: 179.910 ° (True North)
Vertical Section Origin: 0.000 ft, 0.000 ft
TVD Reference Datum: 21ft KB
TVD Reference Elevation: 5125.000 ft above MSL
Seabed / Ground Elevation: 5104.000 ft above MSL
Magnetic Declination: 7.828 °
Total Gravity Field Strength: 998.9848mgn (9.80665 Based)
Gravity Model: GARM
Total Magnetic Field Strength: 51534.429 nT
Magnetic Dip Angle: 66.206 °
Declination Date: February 22, 2023
Magnetic Declination Model: HDGM 2023
North Reference: True North
Grid Convergence Used: 0.0000 °
Total Corr Mag North→True North: 7.8285 °
Local Coord Referenced To: Well Head

Comments	MD (ft)	Incl (°)	Azim True (°)	TVD (ft)	VSEC (ft)	NS (ft)	EW (ft)	DLS (°/100ft)	Northing (ftUS)	Easting (ftUS)	Latitude (°)	Longitude (°)
Surface	0.00	0.00	0.00	0.00	0.00	0.00	0.00	N/A	1255030.25	3237589.91	40.030325	-104.651540
KB Adjusted	8.00	0.00	0.00	8.00	0.00	0.00	0.00	0.00	1255030.25	3237589.91	40.030325	-104.651540
First Surface Survey	88.00	0.18	222.74	88.00	0.09	-0.09	-0.09	0.23	1255030.16	3237589.83	40.030325	-104.651540
179.00	0.04	58.30	179.00	0.18	-0.18	-0.16	0.24	1255030.07	3237589.76	40.030325	-104.651540	
271.00	0.57	259.92	271.00	0.24	-0.24	-0.58	0.66	1255030.00	3237589.33	40.030325	-104.651542	
362.00	1.19	274.51	361.99	0.25	-0.25	-1.97	0.72	1255029.98	3237587.95	40.030325	-104.651547	
452.00	3.25	281.28	451.91	-0.33	0.32	-5.40	2.30	1255030.52	3237584.51	40.030326	-104.651559	
541.00	4.53	281.89	540.71	-1.56	1.54	-11.31	1.44	1255031.68	3237578.58	40.030330	-104.651580	
631.00	5.58	273.28	630.36	-2.55	2.52	-19.16	1.44	1255032.59	3237570.73	40.030332	-104.651608	
722.00	7.65	275.13	720.75	-3.37	3.32	-29.61	2.29	1255033.29	3237560.27	40.030334	-104.651645	
812.00	9.40	275.48	809.75	-4.62	4.56	-42.89	1.95	1255034.40	3237546.98	40.030338	-104.651693	
902.00	10.77	275.65	898.36	-6.18	6.09	-58.58	1.52	1255035.78	3237531.28	40.030342	-104.651749	
992.00	12.88	275.83	986.44	-8.05	7.93	-76.93	2.34	1255037.45	3237512.91	40.030347	-104.651814	
1082.00	15.60	275.83	1073.67	-10.34	10.18	-98.95	3.02	1255039.48	3237490.87	40.030353	-104.651893	
1172.00	18.76	273.72	1159.64	-12.55	12.35	-125.44	3.58	1255041.40	3237464.36	40.030359	-104.651988	
1262.00	21.31	273.10	1244.19	-14.42	14.17	-156.22	2.84	1255042.93	3237433.57	40.030364	-104.652097	
1352.00	20.17	271.52	1328.36	-15.77	15.47	-188.06	1.41	1255043.92	3237401.72	40.030368	-104.652211	
1442.00	18.90	274.77	1413.18	-17.44	17.09	-218.10	1.86	1255045.26	3237371.67	40.030372	-104.652318	
1532.00	19.95	277.32	1498.05	-20.65	20.26	-247.85	1.50	1255048.14	3237341.89	40.030381	-104.652425	
1622.00	20.13	277.85	1582.60	-24.77	24.33	-278.42	0.28	1255051.92	3237311.28	40.030392	-104.652534	
1712.00	20.04	276.36	1667.13	-28.64	28.16	-309.09	0.58	1255055.45	3237280.58	40.030403	-104.652643	
1802.00	20.17	276.62	1751.65	-32.19	31.65	-339.83	0.18	1255058.65	3237249.81	40.030412	-104.652753	
1892.00	20.35	277.06	1836.08	-35.95	35.37	-370.77	0.26	1255062.07	3237218.83	40.030422	-104.652864	
1982.00	20.48	275.13	1920.43	-39.33	38.70	-401.98	0.76	1255065.10	3237187.59	40.030432	-104.652975	
2072.00	19.29	275.21	2005.06	-42.14	41.46	-432.47	1.32	1255067.56	3237157.08	40.030439	-104.653084	
2162.00	19.29	273.02	2090.01	-44.31	43.59	-462.12	0.80	1255069.41	3237127.41	40.030445	-104.653190	
2252.00	19.78	272.14	2174.83	-45.71	44.94	-492.18	0.64	1255070.48	3237097.34	40.030449	-104.653297	
Last Surface Survey	2341.00	19.56	272.14	2258.63	-46.88	46.06	-522.12	0.25	1255071.31	3237067.39	40.030452	-104.653404
9 5/8" Casing	2405.00	18.85	271.96	2319.07	-47.67	46.81	-543.16	1.11	1255071.86	3237046.35	40.030454	-104.653479
First SLB MWD Survey	2461.00	18.23	271.80	2372.17	-48.28	47.40	-560.96	1.11	1255072.28	3237028.55	40.030455	-104.653543
2506.00	18.62	271.95	2414.86	-48.77	47.86	-575.17	0.87	1255072.61	3237014.33	40.030457	-104.653593	
2595.00	21.17	270.27	2498.54	-49.38	48.42	-605.45	2.94	1255072.88	3236984.05	40.030458	-104.653702	
2685.00	23.76	270.62	2581.70	-49.70	48.70	-639.83	2.88	1255072.82	3236949.66	40.030459	-104.653824	
2774.00	27.84	269.84	2661.82	-49.90	48.83	-678.56	4.60	1255072.59	3236910.94	40.030459	-104.653963	
2864.00	30.67	269.89	2740.33	-49.87	48.73	-722.54	3.14	1255072.06	3236866.97	40.030459	-104.654120	
2953.00	32.14	268.02	2816.29	-49.08	47.87	-768.90	1.98	1255070.76	3236820.62	40.030457	-104.654285	
3042.00	33.06	266.58	2891.27	-46.89	45.60	-816.79	1.35	1255068.03	3236772.75	40.030451	-104.654456	
3132.00	35.91	267.19	2965.45	-44.21	42.84	-867.67	3.19	1255064.79	3236721.91	40.030443	-104.654638	
3221.00	35.73	265.71	3037.61	-41.06	39.62	-919.65	0.99	1255061.07	3236669.95	40.030434	-104.654824	
3311.00	38.16	266.26	3109.54	-37.37	35.84	-973.61	2.72	1255056.77	3236616.04	40.030424	-104.655016	
3400.00	37.97	267.24	3179.61	-34.34	32.73	-1028.39	0.71	1255053.13	3236561.29	40.030415	-104.655212	
3490.00	38.32	267.61	3250.40	-31.93	30.23	-1083.92	0.47	1255050.11	3236505.79	40.030408	-104.655410	
3579.00	37.92	270.97	3320.42	-31.34	29.55	-1138.83	2.37	1255048.90	3236450.89	40.030406	-104.655606	
3669.00	37.81	272.35	3391.48	-33.02	31.15	-1194.05	0.95	1255049.97	3236395.66	40.030411	-104.655803	
3758.00	37.96	268.86	3461.73	-33.68	31.72	-1248.68	2.41	1255050.02	3236341.03	40.030412	-104.655999	
3848.00	38.27	270.95	3532.54	-33.68	31.63	-1304.23	1.47	1255049.40	3236285.49	40.030412	-104.656197	
3937.00	37.43	271.81	3602.81	-35.08	32.94	-1358.82	1.11	1255050.19	3236230.88	40.030416	-104.656392	
4027.00	37.10	272.34	3674.44	-37.14	34.92	-1413.29	0.51	1255051.64	3236176.41	40.030421	-104.656586	
4116.00	37.23	271.81	3745.36	-39.17	36.87	-1467.02	0.39	1255053.08	3236122.66	40.030426	-104.656778	
4206.00	37.50	271.98	3816.89	-41.06	38.67	-1521.61	0.31	1255054.36	3236068.06	40.030431	-104.656973	
4295.00	38.45	268.41	3887.06	-41.32	38.84	-1576.35	2.68	1255054.00	3236013.32	40.030432	-104.657169	
4385.00	38.51	269.86	3957.51	-40.56	38.00	-1632.34	1.00	1255052.62	3235957.35	40.030430	-104.657369	
4474.00	38.13	268.20	4027.34	-39.71	37.06	-1687.51	1.23	1255051.16	3235902.18	40.030427	-104.657566	
4564.00	38.63	268.60	4097.89	-38.24	35.50	-1743.37	0.62	1255049.07	3235846.35	40.030423	-104.657765	
4653.00	38.65	268.96	4167.40	-37.14	34.32	-1798.93	0.26	1255047.35	3235790.80	40.030419	-104.657963	
4742.00	38.86	269.41	4236.81	-36.44	33.53	-1854.64	0.39	1255046.03	3235735.10	40.030417	-104.658162	
4832.00	38.73	270.24	4306.95	-36.35	33.35	-1911.03	0.60	1255045.31	3235678.72	40.030417	-104.658364	
4922.00	38.65	269.69	4377.20	-36.41	33.32	-1967.29	0.39	1255044.74	3235622.46	40.030417	-104.658565	
5011.00	39.18	268.96	4446.45	-35.84	32.66	-2023.20	0.79	1255043.55	3235566.57	40.030415	-104.658764	
5101.00	38.18	269.51	4516.70	-35.18	31.91	-2079.44	1.17	1255042.26	3235510.34	40.030413	-104.658965	
5190.00	37.92	270.17	4586.79	-35.11	31.76	-2134.30	0.54	1255041.58	3235455.49	40.030412	-104.659161	
5280.00	38.82	269.12	4657.35	-34.84	31.40	-2190.16	1.23	1255040.69	3235399.63	40.030411	-104.659360	
5370.00	38.50	269.59	4727.62	-34.29	30.77	-2246.38	0.48	1255039.52	3235343.42	40.030410	-104.659561	
5459.00	38.99	269.93	4797.04	-34.15	30.53	-2302.08	0.60	1255038.75	3235287.73	40.030409	-104.659760	
5548.00	39.08	269.59	4866.17	-34.00	30.30	-2358.13	0.26	1255037.98	3235231.69	40.030408	-104.659960	
5638.00	38.91	270.35	4936.12	-34.06	30.27	-2414.76	0.56	1255037.41	3235175.06	40.030408	-104.660163	
5728.00	39.14	268.95	5006.04	-33.80	29.92	-2471.43	1.01	1255036.52	3235118.40	40.030407	-104.660365	
5817.00	37.74	269.09	5075.75	-32.95	28.98	-2526.75	1.57	1255035.05	3235063.10	40.030405	-104.660562	
5906.00	36.38	268.18	5146.77	-31.76	27.71	-2580.37	1.65	1255033.27	3235009.50	40.030401	-104.660754	
5996.00	36.58	268.96	5219.14	-30.51	26.37	-2633.85	0.56	1255031.42	3234956.02	40.030397	-104.660945	
6085.00	36.55	270.07	5290.63	-30.14	25.92	-2686.87	0.75	1255030.46	3234903.02	40.030396	-104.661134	
6175.00	37.89	268.12	5362.30	-29.36	25.05	-2741.29	1.99	1255029.07	3234848.61	40.030394	-104.661329	
6264.00	38.42	269.57	5432.28	-28.34	23.94	-2796.26	1.17	1255027.44	3234793.66	40.030391	-104.661525	
6354.00	38.20	269.72	5502.91	-28.08	23.60	-2852.04	0.26	1255026.56	3234737.88	40.030390	-104.661724	
6443.00	38.20	269.25	5572.85	-27.67	23.10	-2907.08	0.33	1255025.53	3			

Comments	MD (ft)	Incl (°)	Azim True (°)	TVD (ft)	VSEC (ft)	NS (ft)	EW (ft)	DLS (°/100ft)	Northing (ftUS)	Easting (ftUS)	Latitude (°)	Longitude (°)
	6532.00	38.28	268.89	5642.76	-26.85	22.20	-2962.16	0.27	1255024.11	3234627.79	40.030386	-104.662117
	6622.00	38.31	269.21	5713.39	-26.02	21.28	-3017.92	0.22	1255022.65	3234572.04	40.030383	-104.662316
	6712.00	37.99	269.01	5784.17	-25.24	20.41	-3073.51	0.37	1255021.25	3234516.46	40.030381	-104.662515
	6801.00	37.07	269.13	5854.74	-24.44	19.53	-3127.72	1.05	1255019.85	3234462.26	40.030378	-104.662708
	6891.00	38.11	267.84	5926.06	-23.07	18.07	-3182.60	1.45	1255017.87	3234407.40	40.030374	-104.662904
	6980.00	37.84	269.85	5996.22	-22.05	16.97	-3237.35	1.42	1255016.24	3234352.67	40.030371	-104.663100
	7070.00	36.82	268.49	6067.78	-21.35	16.18	-3291.92	1.45	1255014.93	3234298.11	40.030369	-104.663295
	7160.00	38.41	268.75	6139.07	-20.12	14.86	-3346.83	1.77	1255013.09	3234243.22	40.030366	-104.663491
	7249.00	38.19	269.31	6208.91	-19.27	13.93	-3401.98	0.45	1255011.63	3234188.08	40.030363	-104.663688
	7338.00	37.65	269.15	6279.12	-18.62	13.20	-3456.68	0.62	1255010.37	3234133.40	40.030361	-104.663883
	7428.00	37.40	268.34	6350.50	-17.51	11.99	-3511.48	0.61	1255008.65	3234078.61	40.030358	-104.664079
	7517.00	38.49	269.56	6420.68	-16.60	11.00	-3566.20	1.49	1255007.13	3234023.90	40.030355	-104.664274
	7607.00	38.53	269.56	6491.10	-16.26	10.57	-3622.24	0.04	1255006.16	3233967.87	40.030354	-104.664474
	7696.00	37.54	269.32	6561.20	-15.81	10.04	-3677.08	1.13	1255005.10	3233913.04	40.030352	-104.664670
	7786.00	38.26	269.40	6632.21	-15.28	9.42	-3732.36	0.80	1255003.96	3233857.77	40.030350	-104.664868
	7875.00	39.05	263.43	6701.74	-11.87	5.92	-3787.79	4.29	1254999.93	3233802.38	40.030341	-104.665065
	7965.00	41.55	251.46	6770.48	0.80	-6.83	-3844.34	9.03	1254986.63	3233745.96	40.030306	-104.665267
	8054.00	44.18	245.32	6835.74	23.06	-29.18	-3900.54	5.54	1254963.75	3233689.98	40.030244	-104.665468
	8144.00	47.49	239.51	6898.46	52.91	-59.13	-3957.66	5.91	1254933.26	3233633.15	40.030162	-104.665672
	8233.00	51.35	231.36	6956.40	91.22	-97.53	-4013.15	8.19	1254894.33	3233578.03	40.030057	-104.665870
	8322.00	50.43	221.22	7012.63	138.72	-145.11	-4062.98	8.90	1254846.28	3233528.66	40.029926	-104.666048
	8412.00	52.28	210.23	7068.94	195.62	-202.06	-4103.84	9.75	1254788.94	3233488.35	40.029770	-104.666194
	8502.00	56.88	202.01	7121.15	261.37	-267.87	-4135.94	9.02	1254722.83	3233456.88	40.029589	-104.666309
	8591.00	64.16	196.74	7164.94	334.38	-340.91	-4161.49	9.66	1254649.55	3233432.03	40.029389	-104.666400
	8681.00	70.41	193.54	7199.68	414.44	-421.01	-4183.10	7.68	1254569.25	3233411.18	40.029169	-104.666477
	8770.00	78.69	192.32	7233.37	497.95	-504.55	-4202.26	9.40	1254485.53	3233392.82	40.028939	-104.666545
	8860.00	88.08	191.24	7233.73	585.34	-591.97	-4220.49	10.50	1254397.95	3233375.44	40.028699	-104.666610
	8949.00	87.93	183.65	7236.83	673.45	-680.10	-4232.00	8.52	1254309.71	3233364.77	40.028457	-104.666651
Cross Setback Heel (460' FNL, 1975' FEL)	8977.26	87.88	182.85	7237.86	701.65	-708.30	-4233.60	2.85	1254281.50	3233363.44	40.028380	-104.666657
	9039.00	87.78	181.09	7240.20	763.30	-769.96	-4235.72	2.85	1254219.83	3233361.91	40.028211	-104.666665
	9128.00	87.84	181.41	7243.60	852.21	-858.87	-4237.66	0.37	1254130.91	3233360.82	40.027967	-104.666671
	9218.00	88.00	178.15	7246.87	942.14	-948.80	-4237.32	3.62	1254040.99	3233362.02	40.027720	-104.666670
	9307.00	89.55	177.55	7248.78	1031.06	-1037.71	-4233.98	1.86	1253952.12	3233366.21	40.027476	-104.666658
	9396.00	89.55	179.08	7249.47	1120.02	-1126.67	-4231.36	1.72	1253863.19	3233369.68	40.027232	-104.666649
	9486.00	89.48	178.42	7250.24	1210.00	-1216.64	-4229.40	0.74	1253773.24	3233372.51	40.026985	-104.666642
	9575.00	89.37	178.93	7251.13	1298.97	-1305.61	-4227.34	0.59	1253684.30	3233375.42	40.026740	-104.666634
	9664.00	89.39	178.74	7252.09	1387.95	-1394.59	-4225.53	0.21	1253595.35	3233378.08	40.026496	-104.666628
	9754.00	89.48	179.86	7252.98	1477.94	-1484.58	-4224.43	1.24	1253505.38	3233380.04	40.026249	-104.666624
	9844.00	89.49	178.89	7253.78	1567.93	-1574.57	-4223.44	1.08	1253415.41	3233381.89	40.026002	-104.666620
	9933.00	89.42	177.82	7254.62	1656.89	-1663.53	-4220.88	1.20	1253326.48	3233385.30	40.025758	-104.666611
	10022.00	89.43	179.87	7255.51	1745.87	-1752.50	-4219.09	2.31	1253237.53	3233387.94	40.025514	-104.666605
	10112.00	89.21	175.29	7256.58	1835.76	-1842.39	-4215.29	5.09	1253147.69	3233392.60	40.025267	-104.666591
	10201.00	89.33	177.12	7257.72	1924.57	-1931.18	-4209.41	2.06	1253058.96	3233399.33	40.025023	-104.666570
	10290.00	89.45	176.90	7258.66	2013.45	-2020.06	-4204.77	0.29	1252970.13	3233404.82	40.024779	-104.666553
	10380.00	89.45	178.67	7259.53	2103.38	-2109.98	-4201.29	1.97	1252880.25	3233409.16	40.024532	-104.666541
	10469.00	89.44	179.85	7260.40	2192.37	-2198.97	-4200.15	1.32	1252791.28	3233411.15	40.024288	-104.666537
	10559.00	89.41	179.04	7261.30	2282.36	-2288.96	-4199.27	0.90	1252701.31	3233412.89	40.024041	-104.666533
	10649.00	89.25	179.87	7262.36	2372.35	-2378.95	-4198.42	0.94	1252611.33	3233414.60	40.023794	-104.666530
	10738.00	89.51	177.95	7263.33	2461.33	-2467.92	-4196.73	2.18	1252522.38	3233417.14	40.023550	-104.666524
	10828.00	89.51	181.38	7264.10	2551.31	-2557.90	-4196.20	3.81	1252432.41	3233418.54	40.023303	-104.666522
	10917.00	90.20	182.40	7264.33	2640.25	-2646.85	-4199.13	1.39	1252343.44	3233416.45	40.023059	-104.666533
	11007.00	89.60	181.92	7264.49	2730.18	-2736.79	-4202.53	0.85	1252253.48	3233413.92	40.022812	-104.666545
	11097.00	89.78	179.51	7264.97	2820.17	-2826.77	-4203.65	2.69	1252163.49	3233413.66	40.022565	-104.666549
	11186.00	89.66	180.55	7265.40	2909.16	-2915.77	-4203.70	1.18	1252074.50	3233414.46	40.022320	-104.666549
	11276.00	89.74	179.60	7265.87	2999.16	-3005.77	-4203.82	1.06	1251984.51	3233415.20	40.022073	-104.666549
	11365.00	89.72	177.22	7266.30	3088.12	-3094.73	-4201.35	2.67	1251895.59	3233418.53	40.021829	-104.666540
	11455.00	89.71	181.37	7266.75	3178.10	-3184.70	-4200.24	4.61	1251805.63	3233420.50	40.021582	-104.666536
	11545.00	89.76	179.31	7267.17	3268.09	-3274.69	-4200.76	2.29	1251715.64	3233420.83	40.021335	-104.666538
	11634.00	89.52	180.12	7267.72	3357.09	-3363.69	-4200.32	0.95	1251626.66	3233422.13	40.021091	-104.666537
	11723.00	88.93	179.69	7268.92	3446.08	-3452.68	-4200.17	0.82	1251537.67	3233423.12	40.020847	-104.666536
	11813.00	88.91	179.76	7270.62	3536.06	-3526.66	-4199.74	0.08	1251447.70	3233424.41	40.020600	-104.666534
	11903.00	88.75	181.02	7272.46	3626.04	-3626.64	-4200.35	1.41	1251357.73	3233424.66	40.020353	-104.666537
	11992.00	88.58	179.38	7274.53	3715.01	-3721.61	-4200.66	1.85	1251268.76	3233425.21	40.020108	-104.666538
	12081.00	88.86	180.39	7276.51	3803.99	-3803.99	-4200.48	1.18	1251179.79	3233426.24	40.019864	-104.666537
	12171.00	89.69	177.21	7277.65	3893.95	-3900.55	-4198.59	3.66	1251089.86	3233428.99	40.019617	-104.666530
	12261.00	88.94	181.68	7278.72	3983.92	-3990.51	-4197.72	5.05	1250999.91	3233430.72	40.019370	-104.666527
	12350.00	88.88	181.92	7280.42	4072.85	-4079.45	-4200.52	0.28	1250910.95	3233428.77	40.019126	-104.666537
	12440.00	89.06	181.59	7282.04	4162.79	-4169.40	-4203.27	0.42	1250820.99	3233426.88	40.018879	-104.666547
	12529.00	89.10	183.97	7283.47	4251.66	-4258.27	-4207.59	2.68	1250732.07	3233423.42	40.018635	-104.666562
	12619.00	88.78	181.25	7285.14	4341.54	-4348.16	-4211.69	3.04	1250642.16	3233420.81	40.018388	-104.666577
	12708.00	89.68	179.29	7286.33	4430.52	-4437.14	-4212.11	2.43	1250553.18	3233420.80	40.018144	-104.666578
	12797.00	89.55	178.97	7286.93	4519.51	-4526.13	-4210.77	0.39	1250464.21	3233422.80	40.017900	-104.666573
	12887.00	89.45	179.81	7287.72	4609.50	-4616.12	-4209.81	0.94	1250374.24	3233424.62	40.017653	-104.666570
	12977.00	89.68	177.90	7288.40	4699.48	-4706.10	-4208.02	2.13	1250284.29	3233427.27	40.017406	-104.666563
	13066.00	89.72	179.63	7288.87	4788.46	-4795.07	-4206.10	1.95	1250195.34	3233430.03	40.017162	-104.666556
	13155.00	89.68	178.64	7289.34	4877.45	-4864.06	-4204.76	1.12	1250106.37	3233432.23	40.016917	-104.666552
	13245.00	90.09	178.22	7289.53	4967.42	-4974.02	-4202.29	0.65	1250016.44	3233435.56	40.016670	-104.666543
	13334.00	89.89	179.07	7289.54	5056.39							

Comments	MD (ft)	Incl (°)	Azim True (°)	TVD (ft)	VSEC (ft)	NS (ft)	EW (ft)	DLS (°/100ft)	Northing (ftUS)	Easting (ftUS)	Latitude (°)	Longitude (°)
	16018.00	90.55	177.33	7285.21	7740.07	-7746.65	-4183.13	2.46	1247244.23	3233481.25	40.009059	-104.666473
	16108.00	90.65	180.71	7284.27	7830.04	-7836.62	-4181.59	3.75	1247154.28	3233483.65	40.008812	-104.666467
	16197.00	90.37	181.88	7283.48	7919.01	-7925.59	-4183.60	1.35	1247065.30	3233482.49	40.008568	-104.666474
	16287.00	90.75	183.05	7282.60	8008.91	-8015.50	-4187.47	1.37	1246975.36	3233479.48	40.008321	-104.666488
	16376.00	90.45	178.02	7281.67	8097.87	-8104.46	-4188.30	5.66	1246886.39	3233479.50	40.008077	-104.666491
	16466.00	90.36	179.15	7281.03	8187.85	-8194.43	-4186.07	1.25	1246796.45	3233482.59	40.007830	-104.666483
	16555.00	90.49	180.87	7280.37	8276.84	-8283.43	-4186.09	1.94	1246707.47	3233483.43	40.007586	-104.666483
	16645.00	90.32	179.21	7279.73	8366.83	-8373.42	-4186.15	1.86	1246617.48	3233484.22	40.007339	-104.666483
	16734.00	90.25	180.69	7279.28	8455.83	-8462.42	-4186.08	1.67	1246528.49	3233485.15	40.007094	-104.666483
	16824.00	90.29	179.34	7278.85	8545.83	-8552.41	-4186.10	1.50	1246438.50	3233485.98	40.006847	-104.666483
	16913.00	90.16	179.13	7278.50	8634.82	-8641.40	-4184.92	0.28	1246349.53	3233488.02	40.006603	-104.666478
	17003.00	90.16	180.87	7278.24	8724.82	-8713.40	-4184.93	1.93	1246259.54	3233488.87	40.006356	-104.666478
	17093.00	90.15	178.78	7278.00	8814.81	-8821.40	-4184.65	2.32	1246169.55	3233490.01	40.006109	-104.666477
	17182.00	90.23	179.65	7277.70	8903.80	-8910.39	-4183.44	0.98	1246080.58	3233492.08	40.005865	-104.666473
	17272.00	90.27	180.39	7277.30	8993.80	-9000.38	-4183.47	0.82	1245990.59	3233492.90	40.005618	-104.666473
	17361.00	90.33	180.10	7276.84	9082.80	-9089.38	-4183.85	0.33	1245901.60	3233493.37	40.005373	-104.666474
	17451.00	90.23	182.53	7276.40	9172.76	-9179.35	-4185.91	2.70	1245811.62	3233492.17	40.005126	-104.666482
	17540.00	90.18	181.38	7276.08	9261.71	-9268.30	-4188.95	1.29	1245722.65	3233489.99	40.004882	-104.666492
	17629.00	90.12	180.70	7275.85	9350.69	-9357.28	-4190.56	0.77	1245633.66	3233489.22	40.004638	-104.666498
	17719.00	90.12	181.80	7275.67	9440.66	-9447.26	-4192.53	1.23	1245543.67	3233488.12	40.004391	-104.666505
	17808.00	90.34	181.02	7275.31	9529.63	-9536.23	-4194.72	0.91	1245454.68	3233486.78	40.004147	-104.666513
	17898.00	90.39	181.00	7274.73	9619.61	-9626.21	-4196.31	0.06	1245364.69	3233486.05	40.003900	-104.666518
	17987.00	90.30	180.58	7274.20	9708.60	-9715.20	-4197.54	0.49	1245275.70	3233485.67	40.003655	-104.666523
	18077.00	89.98	182.41	7273.98	9798.56	-9805.17	-4199.89	2.06	1245185.72	3233484.18	40.003408	-104.666531
	18166.00	90.08	183.78	7273.94	9887.42	-9894.04	-4204.69	1.55	1245096.81	3233480.23	40.003164	-104.666548
	18256.00	90.25	178.28	7273.68	9977.37	-9983.99	-4206.31	6.12	1245006.85	3233479.48	40.002918	-104.666554
	18345.00	90.02	178.51	7273.47	10066.34	-10072.95	-4203.81	0.36	1244917.92	3233482.83	40.002673	-104.666545
	18434.00	90.27	177.07	7273.25	10155.27	-10161.88	-4200.38	1.64	1244829.03	3233487.11	40.002429	-104.666533
	18524.00	90.43	179.71	7272.70	10245.23	-10251.84	-4197.84	2.94	1244739.11	3233490.50	40.002182	-104.666524
	18613.00	90.20	179.59	7272.21	10334.23	-10340.83	-4197.30	0.29	1244650.12	3233491.90	40.001938	-104.666522
Cross Setback Toe (460' FSL, 1954' FEL)	18661.62	90.15	178.93	7272.06	10382.85	-10389.45	-4196.67	1.37	1244601.52	3233492.99	40.001805	-104.666519
Last SLB MWD Survey	18703.00	90.10	178.37	7271.97	10424.21	-10430.82	-4195.70	1.37	1244560.16	3233494.36	40.001691	-104.666516
Projection to TD (367' FSL, 1952' FEL)	18755.00	90.10	178.37	7271.88	10476.20	-10482.80	-4194.22	0.01	1244508.20	3233496.34	40.001548	-104.666510

Survey Type: Def Survey

Survey Error Model: ISCWSA Rev 3 *** 3-D 97.071% Confidence 3.0000 sigma
 Survey Program:

Description	Part	MD From (ft)	MD To (ft)	EOU Freq (ft)	Hole Size (in)	Casing Diameter (in)	Survey Tool Type	Borehole / Survey
	1	0.000	8.000	1/98.425	13.500	9.625	A001Mb_MWD-Depth Only	Fawn 2833-02H / Fawn 2833-02H MWD 0' to 18755' Definitive
	1	8.000	21.000	Act Stns	13.500	9.625	A001Mb_MWD-Depth Only	Fawn 2833-02H / Fawn 2833-02H MWD 0' to 18755' Definitive
	1	21.000	2341.000	Act Stns	13.500	9.625	A001Mb_MWD	Fawn 2833-02H / Fawn 2833-02H MWD 0' to 18755' Definitive
	1	2341.000	3579.000	Act Stns	8.500	5.500	B006Mb_MWD+IGRF	Fawn 2833-02H / Fawn 2833-02H MWD 0' to 18755' Definitive
	1	3579.000	18755.000	Act Stns	8.500	5.500	B001Mb_MWD+HRGM	Fawn 2833-02H / Fawn 2833-02H MWD 0' to 18755' Definitive