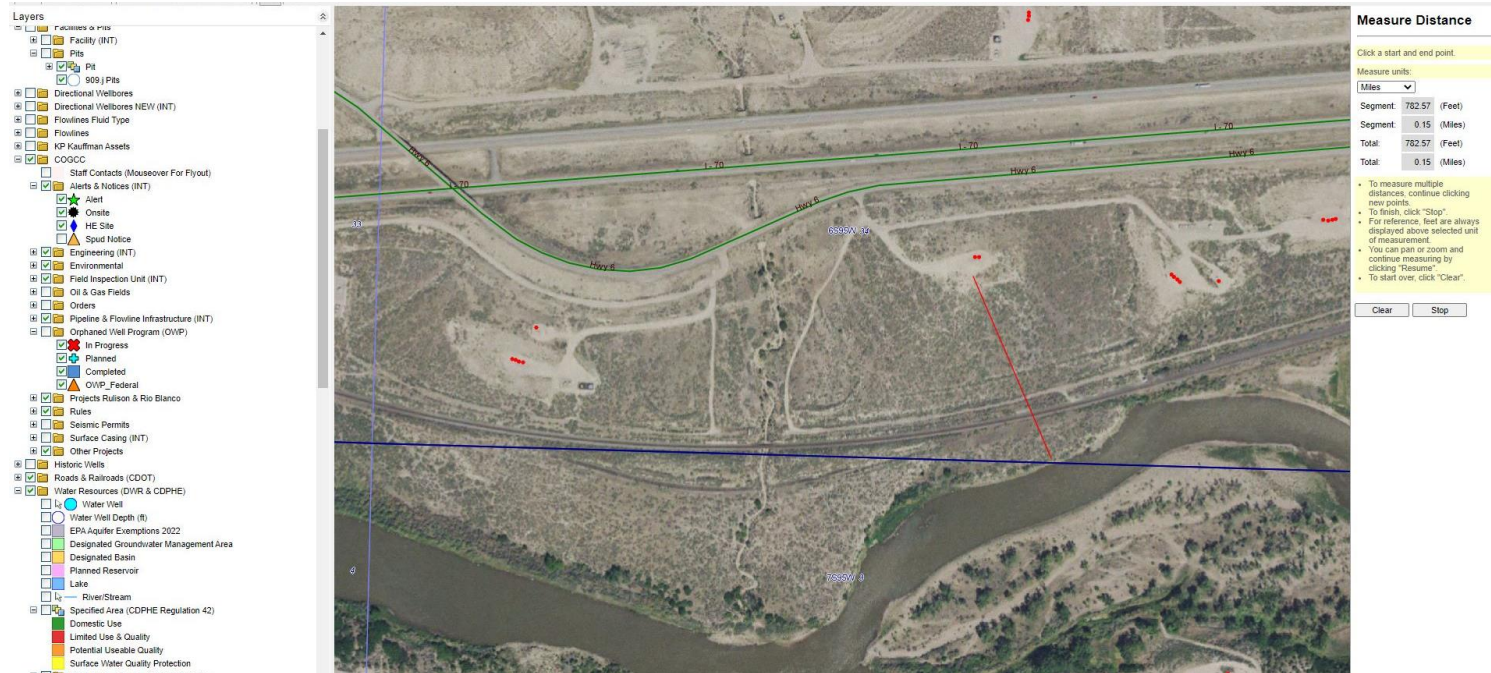


Stormwater Management and Erosion control

Location Name: TEP ROCKY MOUNTAIN LLC PUCKETT/TOSCO-66S95W /34SESW
Location #: 324218



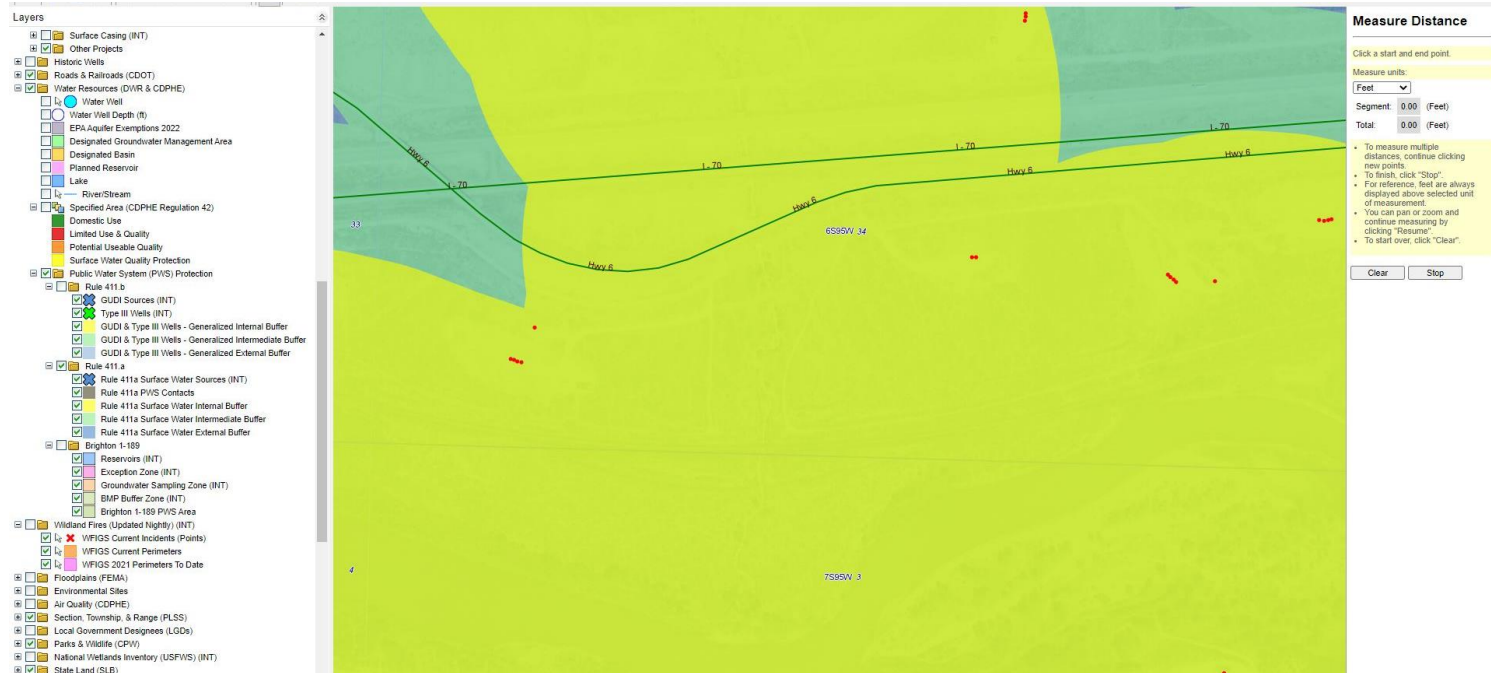
Location Overview: The location is located approximately 260 yards form the Colorado river.

Section/Township/Range: 34 6S95W

Stormwater Management and Erosion control

Location Name: TEP ROCKY MOUNTAIN LLC PUCKETT/TOSCO-66S95W /34SESW

Location #: 324218



Location Overview: The location is located in a 411 a. internal buffer zone.

Section/Township/Range: 34 6S95W



Stormwater Management and Erosion control

Location Name: TEP ROCKY MOUNTAIN LLC PUCKETT/TOSCO-66S95W /34SESW

Location #: 324218



Photo #9716 Insufficient velocity BMP's.



Photo #9717 Insufficient velocity BMP's.

Stormwater Management and Erosion control

Location Name: TEP ROCKY MOUNTAIN LLC PUCKETT/TOSCO-66S95W /34SESW

Location #: 324218



Photo #9720 Sediment migration off location.



Photo #9718 Rill erosion occurring on location.

Stormwater Management and Erosion control

Location Name: TEP ROCKY MOUNTAIN LLC PUCKETT/TOSCO-66S95W /34SESW

Location #: 324218



Photo #9719 Rill erosion occurring on location.



Photo #9714 Location lacks stabilization.

Stormwater Management and Erosion control

Location Name: TEP ROCKY MOUNTAIN LLC PUCKETT/TOSCO-66S95W /34SESW

Location #: 324218



Photo #9715 Location lacks stabilization.

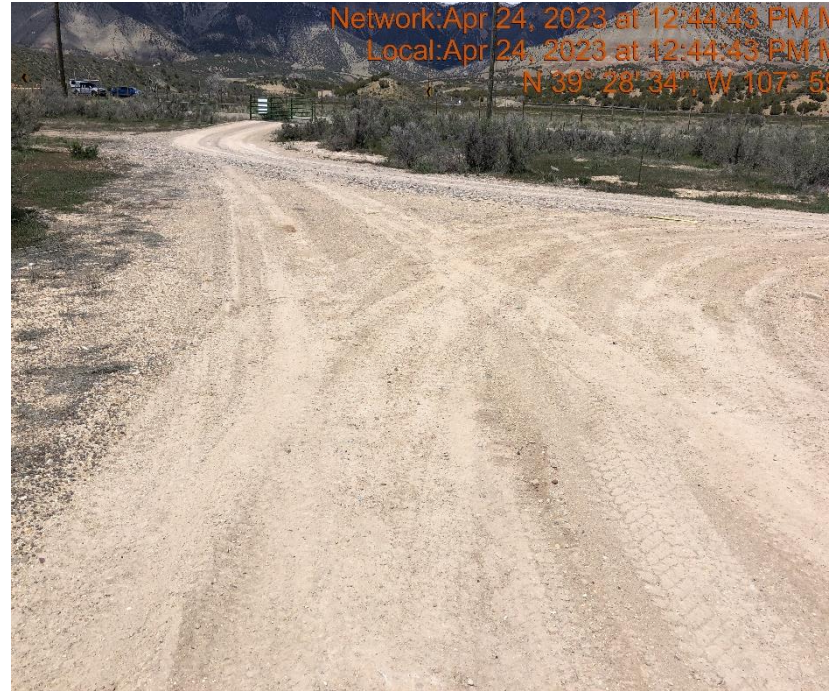


Photo #9725 Insufficient tracking BMP to minimize the transport of sediment.