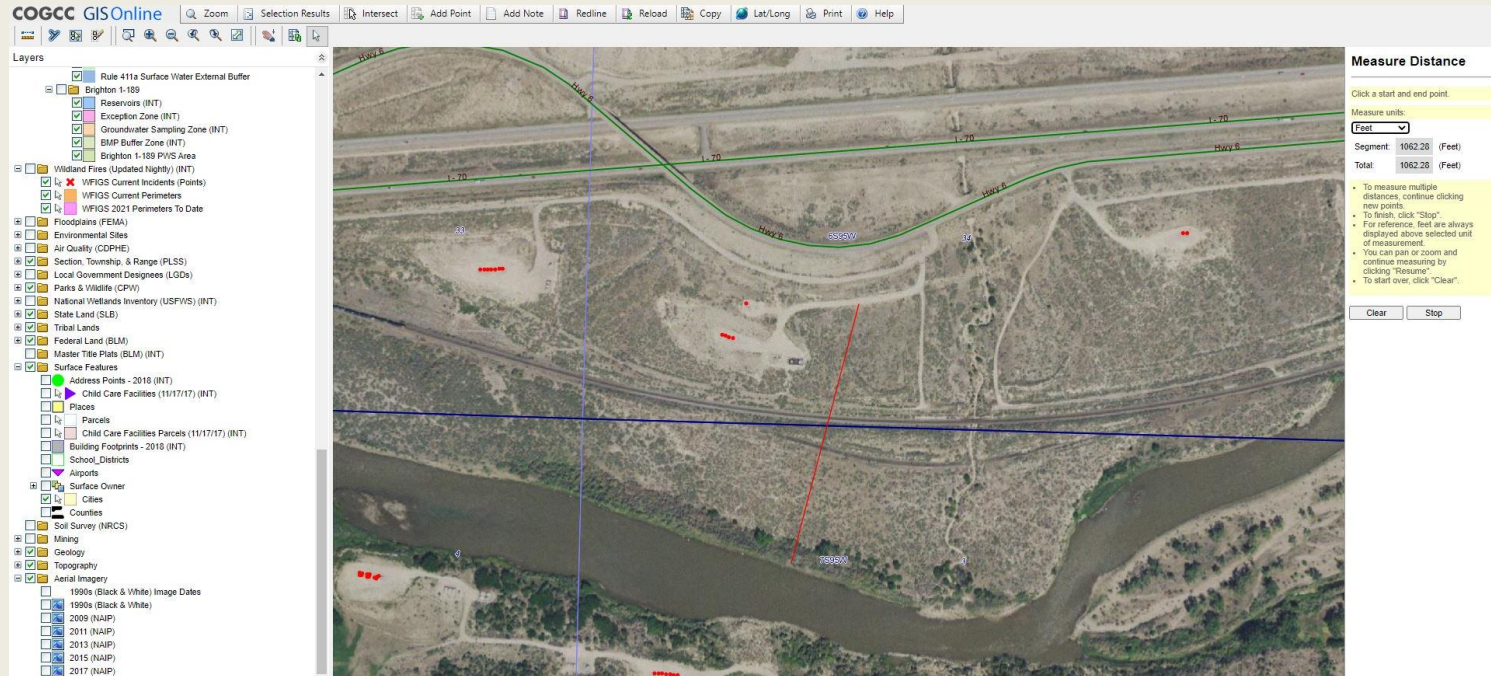


Stormwater Management and Erosion control

Access Road/Assoc. Location Name: TEP ROCKY MOUNTAIN LLC PA-66S95W /34SWSW

Access Road/Assoc. Location #: 334929



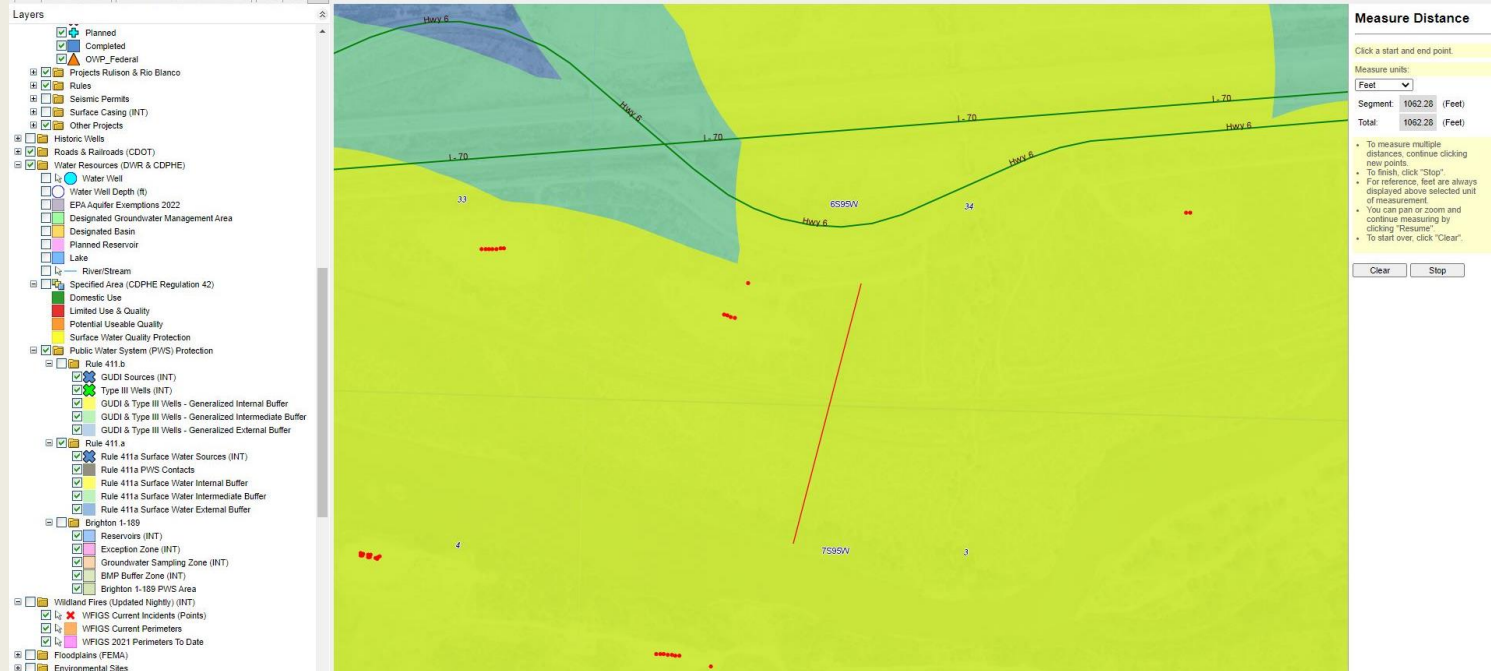
Access Road overview: The access road is approximately 350 yards from the Colorado River.

Section/Township/Range: 34 6S95W

Stormwater Management and Erosion control

Access Road/Assoc. Location Name: TEP ROCKY MOUNTAIN LLC PA-66S95W /34SWSW

Access Road/Assoc. Location #: 334929



Access Road overview: The access road is located in a 411 a.
internal buffer zone.

Section/Township/Range: 34 6S95W

Stormwater Management and Erosion control

Access Road/Assoc. Location Name: TEP ROCKY MOUNTAIN LLC PA-66S95W /34SWSW

Access Road/Assoc. Location #: 334929



Photo #9700 Access road lacks stabilization.



Photo #9702 Access road lacks stabilization.

Stormwater Management and Erosion control

Access Road/Assoc. Location Name: TEP ROCKY MOUNTAIN LLC PA-66S95W /34SWSW

Access Road/Assoc. Location #: 334929



Photo #9706 Access road lacks stabilization.



Photo #9707 Access road lacks stabilization.

Stormwater Management and Erosion control

Access Road/Assoc. Location Name: TEP ROCKY MOUNTAIN LLC PA-66S95W /34SWSW

Access Road/Assoc. Location #: 334929



Photo #9708 Access road lacks stabilization.



Photo #9709 Insufficient tracking BMP to minimize the transport of sediment.

Stormwater Management and Erosion control
Access Road/Assoc. Location Name: TEP ROCKY MOUNTAIN LLC PA-66S95W /34SWSW
Access Road/Assoc. Location #: 334929



Photo #9710 Insufficient tracking BMP to minimize the transport of sediment.



Photo #9711 Insufficient tracking BMP to minimize the transport of sediment.