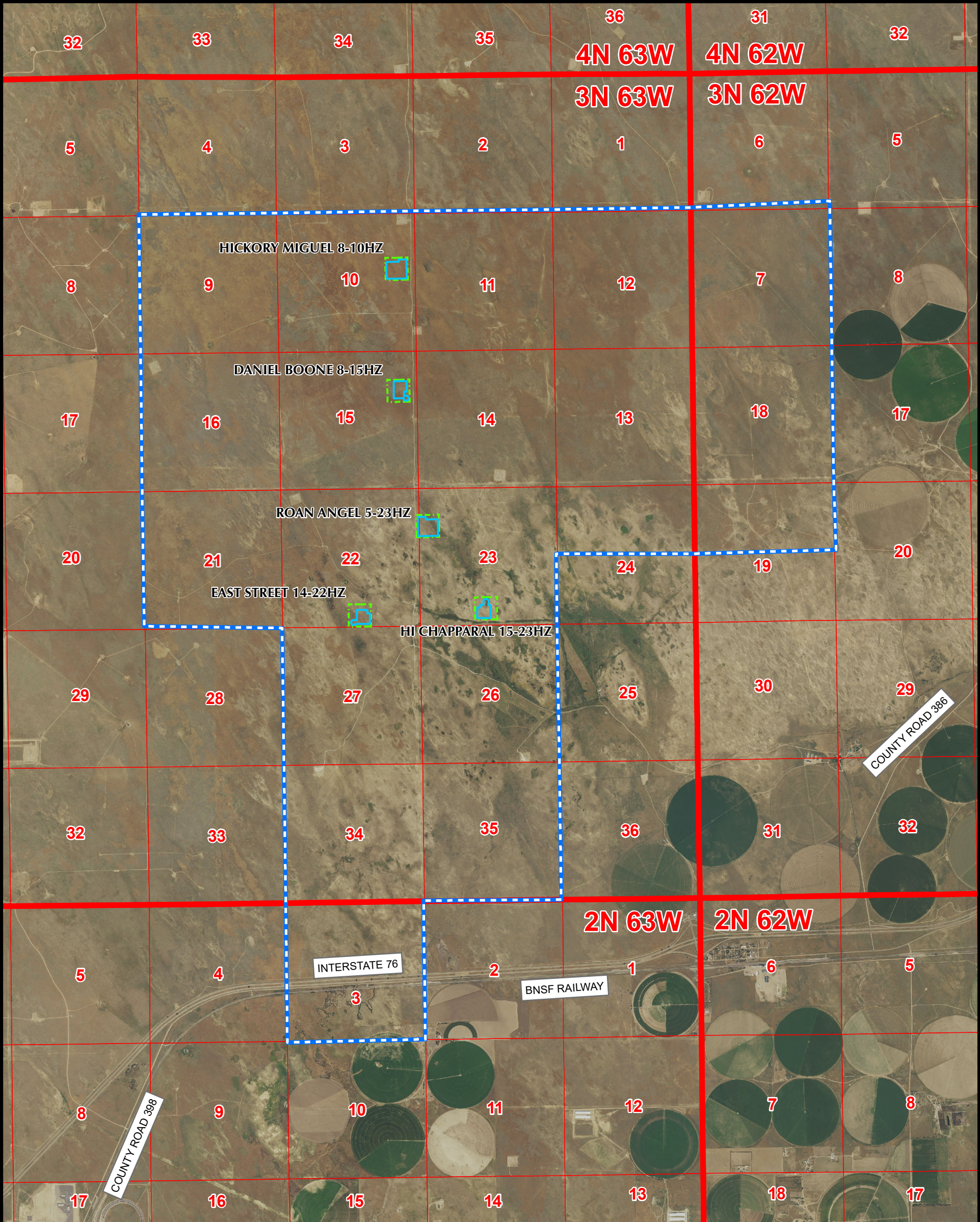


COLT OIL AND GAS DEVELOPMENT PLAN
HICKORY MIQUEL 8-10HZ, DANIEL BOONE 8-15HZ,
ROAN ANGEL 5-23HZ, EAST STREET 14-22HZ, HI CHAPPARAL 15-23HZ
SECTIONS 10, 15, 22 & 23, TOWNSHIP 3 NORTH, RANGE 63 WEST, 6TH P.M., WELD COUNTY, COLORADO


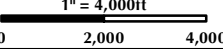


K:\NADAR\2017\2017_197_CERV\GIS\COLT_MAPS\COLT_MAPS\COLT_MAP.MXD 3/24/2023 3:35:10 PM

- Legend**
- PROPOSED WORKING PAD SURFACE
 - PROPOSED OIL & GAS LOCATION
 - OGD BOUNDARY

**Kerr-McGee Oil &
 Gas Onshore LP**
 1099 18th Street
 Denver, Colorado 80202


609 Consulting, LLC
 LOVELAND OFFICE
 6706 North Franklin Avenue
 Loveland, Colorado 80538
 Phone 970-776-4331
 SHERIDAN OFFICE
 1095 Saberton Avenue
 Sheridan, Wyoming 82801
 Phone 307-674-0609


 N
 NAD83 CO-Nft
 1" = 4,000ft


Drawn by: AK Date: 24 Mar 2023
 Revised: Date: