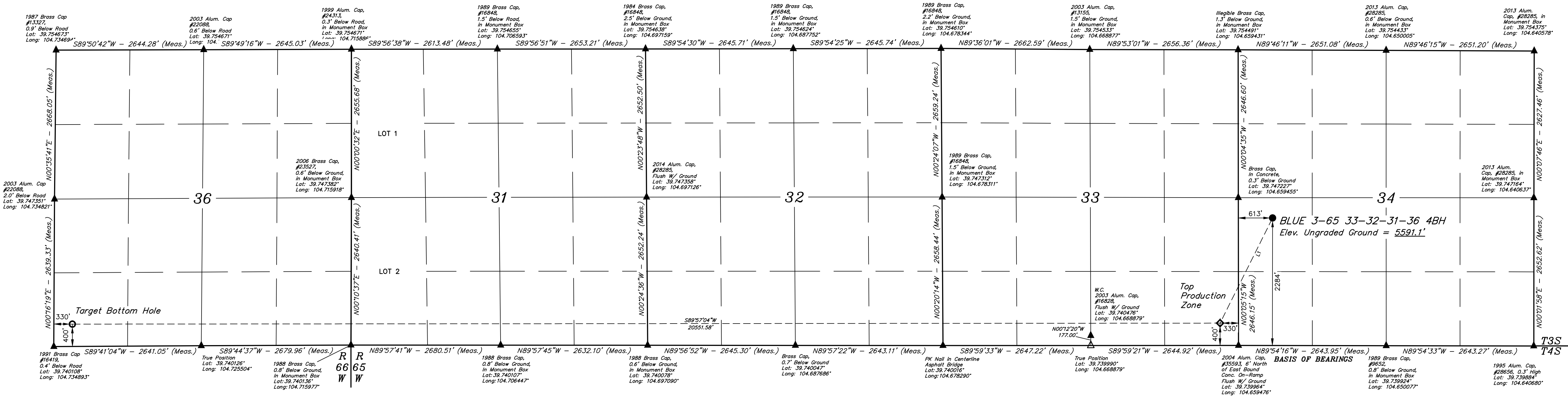
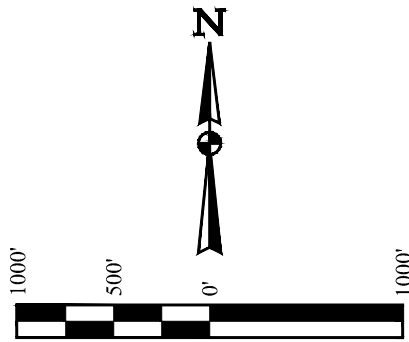


T3S, R65W, 6th P.M.

CRESTONE PEAK RESOURCES OPERATING LLC

BLUE 3-65 33-32-31-36 4BH
NW 1/4 SW 1/4, SECTION 34, T3S, R65W, 6th P.M.
ADAMS COUNTY, COLORADO

BASIS OF ELEVATION
OPUS SOLUTION GENERATED NAVD 88



LINE TABLE		
LINE	DIRECTION	LENGTH
L1	S26°32'32\"W	2104.53'

LEGEND:

- = PROPOSED WELLHEAD.
- = TOP PRODUCTION ZONE.
- = TARGET BOTTOM HOLE.
- ▲ = SECTION CORNERS LOCATED. (NAD 83)
- △ = SECTION CORNERS RE-ESTABLISHED. (Not Set on Ground.) (NAD 83)

REV: 01 08-23-22 K.C. (TBM MOVE)

PDOP = 1.7

Corporate Office • 85 South 200 East
Vernal, UT 84078 • (435) 789-1017

SURVEYED BY: MATT MILLER, O.R.

DRAWN BY: J.J.

SCALE: 10-37-20 11-11-20 1\"= 1000'

WELL LOCATION PLAT

NAD 83 SURFACE LOCATION	NAD 83 (TOP PRODUCTION ZONE)	NAD 83 (TARGET BOTTOM HOLE)
N 1151526.30' E 3236066.82'	N 1149641.72' E 3236037.84'	N 1149507.60' E 3235490.17'
N 1151526.30' E 3236066.82'	N 1149641.72' E 3236037.84'	N 1149507.60' E 3235490.17'