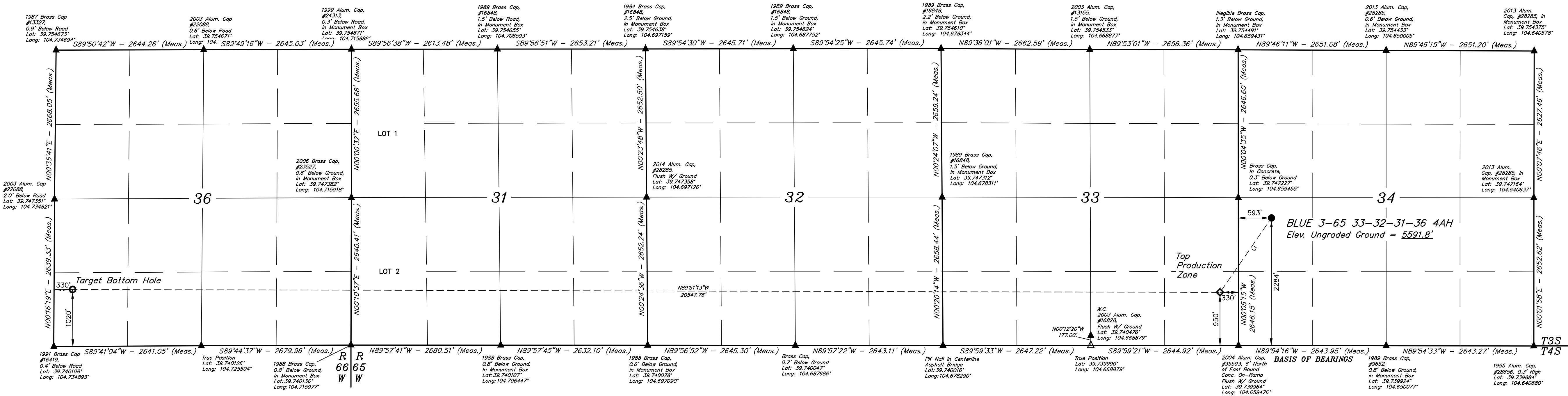
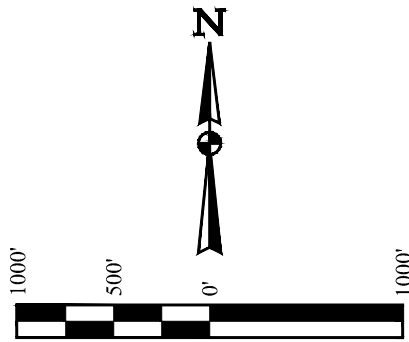


T3S, R65W, 6th P.M.

CRESTONE PEAK RESOURCES OPERATING LLC

BLUE 3-65 33-32-31-36 4AH
NW 1/4 SW 1/4, SECTION 34, T3S, R65W, 6th P.M.
ADAMS COUNTY, COLORADO

BASIS OF ELEVATION
OPUS SOLUTION GENERATED NAVD 88



LINE TABLE		
LINE	DIRECTION	LENGTH
L1	S34°39'34"W	1620.11'

LEGEND:

- = PROPOSED WELLHEAD.
- ◆ = TOP PRODUCTION ZONE.
- = TARGET BOTTOM HOLE.
- ▲ = SECTION CORNERS LOCATED. (NAD 83)
- △ = SECTION CORNERS RE-ESTABLISHED. (Not Set on Ground.) (NAD 83)

PDOP = 1.7

THIS IS TO CERTIFY THAT THE ABOVE DESCRIBED SURVEY WAS MADE BY ME OR UNDER MY CLOSE PERSONAL SUPERVISION AND THAT THE SAME ARE TRUE AND CORRECT TO THE BEST OF MY KNOWLEDGE AND BELIEF.

CERTIFIED AND REGISTERED
MATT MILLER, O.R.
RECORDING NO. 3285
STATE OF COLORADO
JUL 22 2022

UELS, LLC
Corporate Office * 85 South 200 East
Vernal, UT 84078 * (435) 789-1017

WELL LOCATION PLAT

NAD 83 (SURFACE LOCATION)	NAD 83 (TOP PRODUCTION ZONE)	NAD 83 (TARGET BOTTOM HOLE)
LATITUDE = 39°44'46.40" (39.746233°)	LATITUDE = 39°44'43.27" (39.742575°)	LATITUDE = 39°44'44.47" (39.742910°)
LONGITUDE = 104°39'26.45" (104.657348°)	LONGITUDE = 104°39'38.31" (104.660642°)	LONGITUDE = 104°44'01.29" (104.733692°)
STATE PLANE NAD 83 (CO. NORTH)	STATE PLANE NAD 83 (CO. NORTH)	STATE PLANE NAD 83 (CO. NORTH)
N 1151520.08' E 3316946.83'	N 1150101.55' E 3316033.28'	N 1150117.48' E 3315490.57'