

Inspection Photos

April 21, 2023

Operator: TEP Rocky Mountain- #96850

Location ID: 335045

Location Name: South Leverich /13-09 Pad

Inspection Document #: 702801487

Garfield County, CO

NESE Section 13 T7S R94W

Anna O'Malley
Reclamation Specialist, COGCC



COLORADO

**Oil & Gas Conservation
Commission**

Department of Natural Resources

Inspection Photos
Location Name: South Leverich /13-09 Pad
Location ID: 335045



Photo 1. Photo taken from the southwest shows an overview of the working pad area.

Inspection Photos
Location Name: South Leverich /13-09 Pad
Location ID: 335045



Photo 2. Photo taken from the southeast shows an overview of the working pad area.



Location ID: 335045

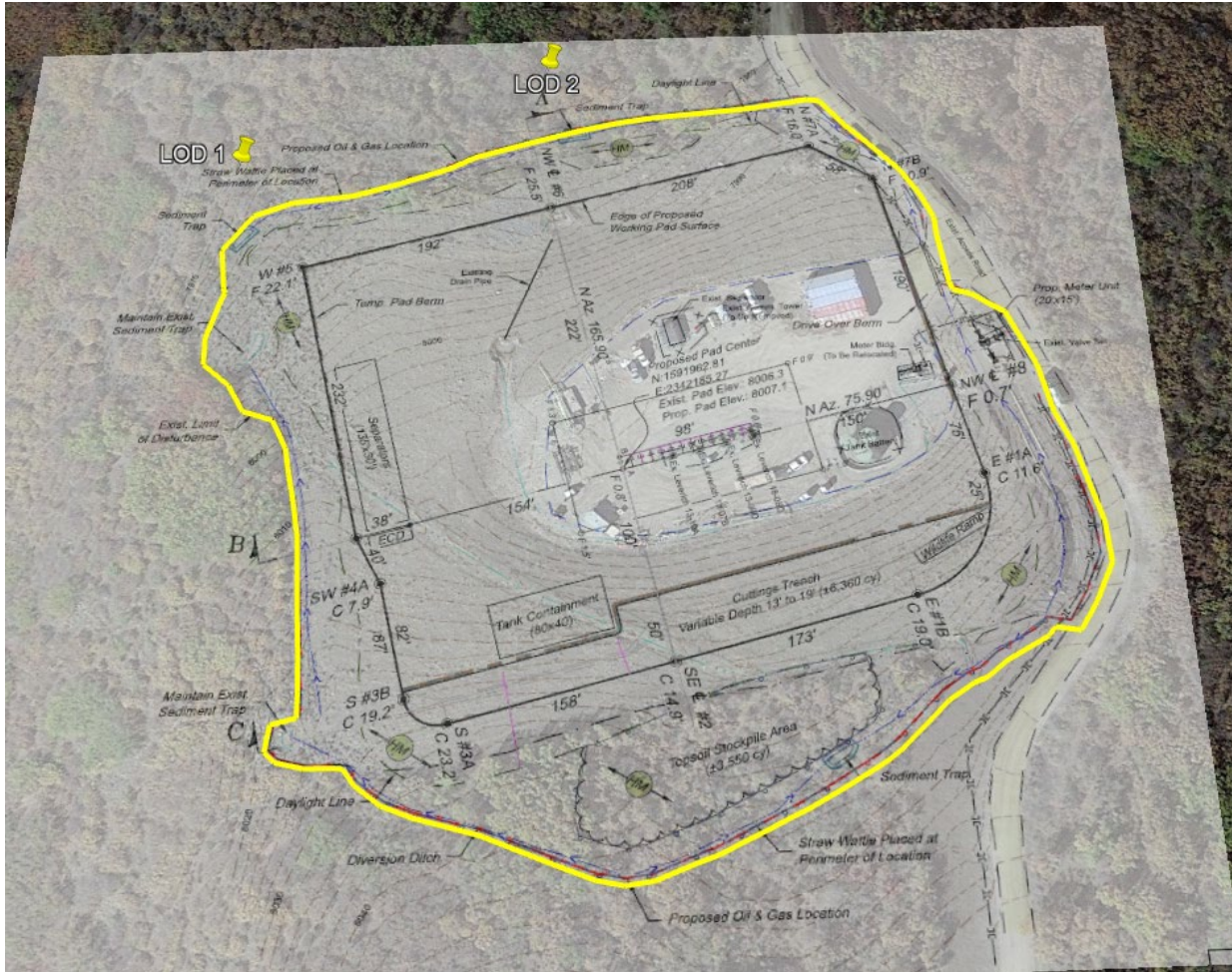


Photo 3. Photo shows the construction layout drawing overlaid on Google Earth imagery with the 2A location (yellow). “LOD” pins show GPS points of the actual location disturbance which extend approximately 70 feet beyond the permitted location.

Inspection Photos
Location Name: South Leverich /13-09 Pad
Location ID: 335045



Photo 4. Photo taken from the northwestern edge of the location shows “LOD 1” from Photo 3. Note also lack of protections for unconsolidated topsoil subject to erosion.



Photo 5. Photo taken from the northern edge of the location shows “LOD 2” from Photo 3. Note also lack of protections for unconsolidated topsoil susceptible to erosion.

Inspection Photos
Location Name: South Leverich /13-09 Pad
Location ID: 335045



Photo 6. Photo taken from the north shows perimeter stormwater controls which are mapped at the northern edge of the location. The disturbance continues an additional ~70 feet to the north (red arrow).



Inspection Photos
Location Name: South Leverich /13-09 Pad
Location ID: 335045



Photo 7. Photo taken from the north. Topsoil does not appear to have been salvaged at stormwater BMPs (note dark soil color and presence of vegetation). Photo also shows the diversion ditch has not been properly constructed per good engineering practices.



Inspection Photos
Location Name: South Leverich /13-09 Pad
Location ID: 335045



Photo 8. Photo taken from the south. Topsoil does not appear to have been salvaged. Stormwater BMPs appear to be constructed from topsoil.

Inspection Photos
Location Name: South Leverich /13-09 Pad
Location ID: 335045



Photo 9. Photo taken from the west shows a lack of stormwater and topsoil protection BMPs. Topsoil is loose and unconsolidated and susceptible to erosion.

Inspection Photos
Location Name: South Leverich /13-09 Pad
Location ID: 335045



Photo 10. Photo shows perimeter stormwater BMPs at the west of the location are in disrepair.

Inspection Photos

Location Name: South Leverich /13-09 Pad

Location ID: 335045



Photo 11. Photos taken from the west show the fill slope of the location. BMPs to segregate and protect topsoil from mixing with the lighter colored subsoil berm are missing/insufficient. Additionally, topsoil is bare, loose and unconsolidated and susceptible to erosion.



COLORADO

Oil & Gas Conservation
Commission

Department of Natural Resources

Inspection Number: 702801487

Inspection Photos
Location Name: South Leverich /13-09 Pad
Location ID: 335045



Photo 12. Photo taken from the southwest shows topsoil (darker colored) is unstabilized and eroding. BMPs to stabilize and protect topsoil are missing/insufficient.

Inspection Photos
Location Name: South Leverich /13-09 Pad
Location ID: 335045



Photo 13. Photos show the topsoil stockpile at the south of the location. Hydromulch is not evenly distributed to cover the entire exposed soil surface. It appears mulch has not been applied from multiple angles to prevent shadow.



Inspection Photos
Location Name: South Leverich /13-09 Pad
Location ID: 335045



Photo 14. Photos show the topsoil stockpile at the south of the location. Some perimeter wattles are not installed in accordance with good engineering practices (trenched and backfilled).



Inspection Photos
Location Name: South Leverich /13-09 Pad
Location ID: 335045



Photo 15. Photos show sediment traps at the northwest (left) and southwest (right). The outlets are designed to discharge stormwater directly into an unvegetated, unstabilized topsoil berm.



COLORADO
Oil & Gas Conservation
Commission

Department of Natural Resources

Inspection Number: 702801487

Inspection Photos
Location Name: South Leverich /13-09 Pad
Location ID: 335045



Photo 16. Photo taken from the southeast shows degradation where stormwater is bypassing an armored inlet to a sediment trap.



Photo 17. Photo shows the outlet pipe for the sediment trap pictured in Photo 16.

Inspection Photos
Location Name: South Leverich /13-09 Pad
Location ID: 335045



Photo 18. Photo taken from the east shows the stormwater pipe pictured in photo 17 is discharging concentrated stormwater flows without outlet protections. Stormwater is flowing down the access road where a water bar diverts it to the east of the access road without BMPs to manage flow or protect the discharge area.



Inspection Photos
Location Name: South Leverich /13-09 Pad
Location ID: 335045



Photo 19. Refer to Photo 18 comment.



Inspection Photos
Location Name: South Leverich /13-09 Pad
Location ID: 335045



Photo 20. Refer to Photo 18 comment. Concentrated stormwater flows are being discharged into a loose, unconsolidated pile of soil to the east of the access road.



Inspection Photos
Location Name: South Leverich /13-09 Pad
Location ID: 335045



Photo 21. Photo taken from the south shows rill erosion occurring on bare, unprotected, unstabilized slopes.



COLORADO
Oil & Gas Conservation
Commission

Department of Natural Resources

Inspection Number: 702801487

Inspection Photos
Location Name: South Leverich /13-09 Pad
Location ID: 335045



Photo 22. Photo taken from the Location entrance shows a portable toilet has not been secured to prevent a spill.



COLORADO
Oil & Gas Conservation
Commission

Department of Natural Resources

Inspection Number: 702801487

Inspection Photos
Location Name: South Leverich /13-09 Pad
Location ID: 335045



Photo 23. Photos show the location entrance (left) and the location access road (right) before it merges with county road 317. Tracking control BMPs are missing/insufficient.