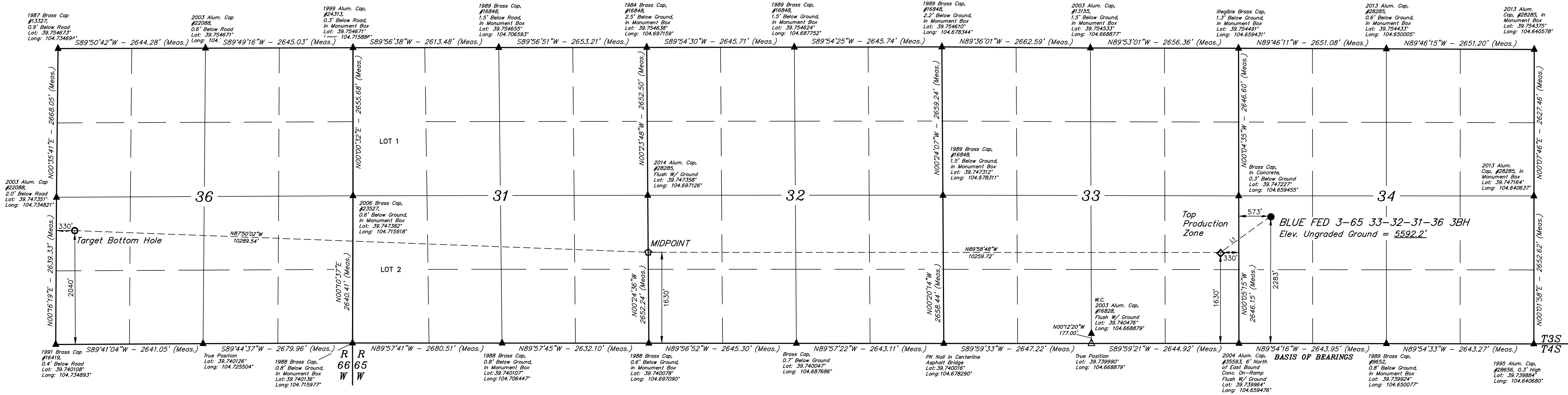
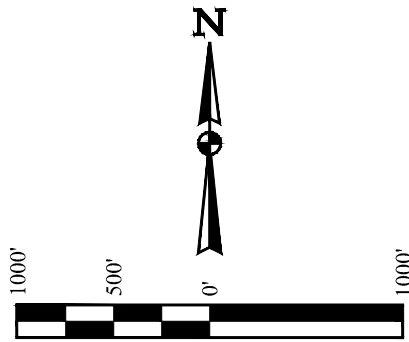


T3S, R65W, 6th P.M.

CRESTONE PEAK RESOURCES OPERATING LLC

BLUE FED 3-65 33-32-31-36 3BH  
NW 1/4 SW 1/4, SECTION 34, T3S, R65W, 6th P.M.  
ADAMS COUNTY, COLORADO

BASIS OF ELEVATION  
OPUS SOLUTION GENERATED NAVD 88



LINE TABLE		
LINE	DIRECTION	LENGTH
L1	S54°07'35\"W	1113.52'

LEGEND:

- = PROPOSED WELLHEAD.
- ◆ = TOP PRODUCTION ZONE.
- ☆ = MIDPOINT.
- = TARGET BOTTOM HOLE.
- ▲ = SECTION CORNERS LOCATED. (NAD 83)
- △ = SECTION CORNERS RE-ESTABLISHED. (Not Set on Ground.) (NAD 83)

CERTIFICATE OF REGISTRATION  
THIS IS TO CERTIFY THAT THE ABOVE DESCRIBED SURVEY WAS MADE BY ME OR UNDER MY CLOSE PERSONAL SUPERVISION AND THAT THE SAME ARE TRUE AND CORRECT TO THE BEST OF MY KNOWLEDGE AND BELIEF.  
RECEIVED LAND SURVEY  
RECORD NO. 3285  
STATE OF COLORADO  
JUL 11 2022

REV: 03 10-20-22 K.C. (ADD MIDPOINT)

PDPF - 1.7

Corporate Office # 85 South 200 East  
Vernal, UT 84078 • (435) 789-1017

UELS, LLC  
Corporate Office # 85 South 200 East  
Vernal, UT 84078 • (435) 789-1017

10-27-20  
11-11-20  
1\" = 1000'

SURVEYED BY: MATT MILLER, O.R.  
DRAWN BY: J.J.  
WELL LOCATION PLAT

NAD 83 (SURFACE LOCATION)	NAD 83 (TOP PRODUCTION ZONE)	NAD 83 (MIDPOINT)	NAD 83 (TARGET BOTTOM HOLE)
LATITUDE = 39°44'46.40\" (39.746223°) LONGITUDE = 104°39'28.29\" (104.657419°) STATE PLANE NAD 83 (CO. NORTH) N: 1151238.87' E: 3236928.84'	LATITUDE = 39°44'39.99\" (39.744411°) LONGITUDE = 104°39'28.29\" (104.657419°) STATE PLANE NAD 83 (CO. NORTH) N: 1150871.39' E: 3236928.48'	LATITUDE = 39°44'40.39\" (39.744552°) LONGITUDE = 104°39'28.29\" (104.657419°) STATE PLANE NAD 83 (CO. NORTH) N: 1150816.77' E: 3235771.40'	LATITUDE = 39°44'44.55\" (39.745709°) LONGITUDE = 104°41'49.60\" (104.697112°) STATE PLANE NAD 83 (CO. NORTH) N: 1151147.29' E: 3215489.65'