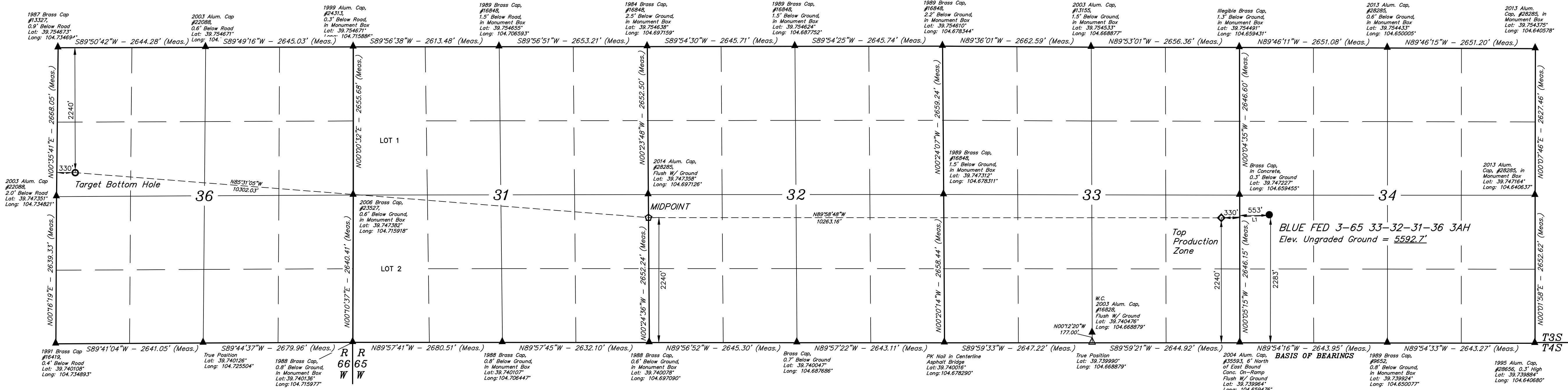
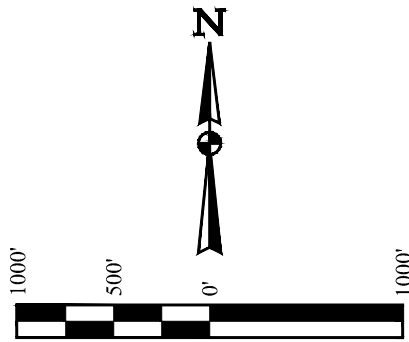


T3S, R65W, 6th P.M.

CRESTONE PEAK RESOURCES OPERATING LLC

BLUE FED 3-65 33-32-31-36 3AH  
NW 1/4 SW 1/4, SECTION 34, T3S, R65W, 6th P.M.  
ADAMS COUNTY, COLORADO

BASIS OF ELEVATION  
OPUS SOLUTION GENERATED NAVD 88



LINE TABLE		
LINE	DIRECTION	LENGTH
L1	S87°15'01\"W	884.24'

LEGEND:

- = PROPOSED WELLHEAD.
- ◆ = TOP PRODUCTION ZONE.
- ☆ = MIDPOINT.
- = TARGET BOTTOM HOLE.
- ▲ = SECTION CORNERS LOCATED. (NAD 83)
- △ = SECTION CORNERS RE-ESTABLISHED. (Not Set on Ground.) (NAD 83)

PDOP = 1.7

NAD 83 (SURFACE LOCATION)	NAD 83 (TOP PRODUCTION ZONE)	NAD 83 (MIDPOINT)	NAD 83 (TARGET BOTTOM HOLE)
LATITUDE = 39°44'46.40\" (39.746233°)	LATITUDE = 39°44'46.02\" (39.746115°)	LATITUDE = 39°44'46.41\" (39.746226°)	LATITUDE = 39°44'54.69\" (39.748525°)
LONGITUDE = 104°39'26.37\" (104.657490°)	LONGITUDE = 104°39'26.29\" (104.657490°)	LONGITUDE = 104°41'49.63\" (104.697120°)	LONGITUDE = 104°41'49.63\" (104.697120°)
STATE PLANE NAD 83 (CO. NORTH)	STATE PLANE NAD 83 (CO. NORTH)	STATE PLANE NAD 83 (CO. NORTH)	STATE PLANE NAD 83 (CO. NORTH)
N: 1151528.65' E: 3236906.84'	N: 1151481.23' E: 3236024.09'	N: 1151426.58' E: 3235763.48'	N: 115173.20' E: 3215491.13'

REV: 04 11-01-22 K.C. ( UPDATE TPZ TABLE)

UNITAH  
SURVEYING & MAPPING

UELS, LLC  
Corporate Office \* 85 South 200 East  
Vernal, UT 84078 \* (435) 789-1017

SURVEYED BY: MATT MILLER, O.R.

DRAWN BY: J.J.

SCALE: 10-37-20 11-11-20 1\" = 1000'

WELL LOCATION PLAT

THIS IS TO CERTIFY THAT THE ABOVE DESCRIBED SURVEY WAS MADE BY THE UNDERSIGNED, A LICENSED SURVEYOR OF THE STATE OF COLORADO, AND THAT THE SAME ARE TRUE AND CORRECT TO THE BEST OF HIS KNOWLEDGE AND BELIEF.

CERTIFIED COLORADO REGISTERED SURVEYOR  
No. 33283  
J.J. MILLER  
11-11-20

RECORD LAND SURVEYING  
RECORD NO. 3283  
STATE OF COLORADO