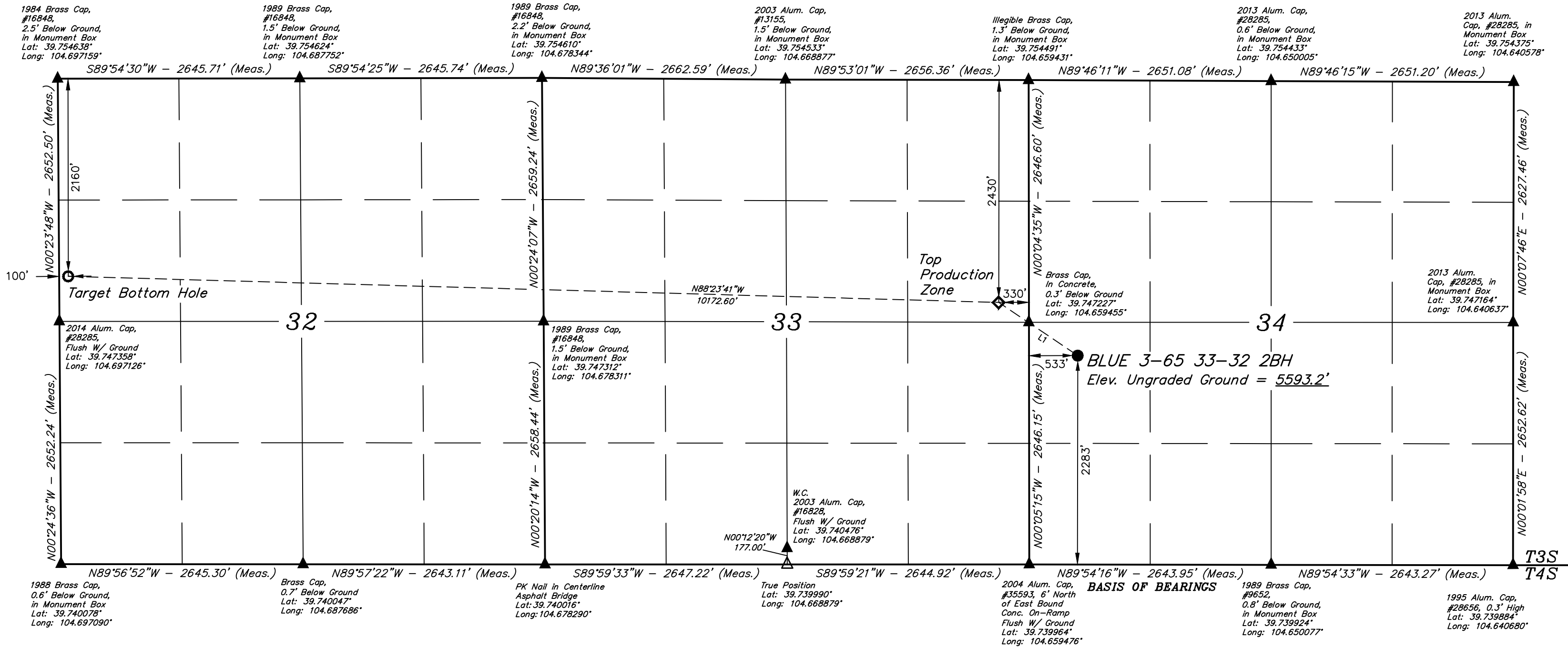
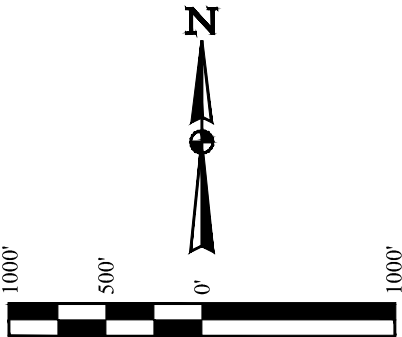


BASIS OF ELEVATION
OPUS SOLUTION GENERATED NAVD 88



LINE TABLE		
LINE	DIRECTION	LENGTH
L1	N56°04'43"W	1041.37'

LEGEND:

- = PROPOSED WELLHEAD.
- ◆ = TOP PRODUCTION ZONE.
- = TARGET BOTTOM HOLE.
- ▲ = SECTION CORNERS LOCATED. (NAD 83)
- △ = SECTION CORNERS RE-ESTABLISHED. (Not Set on Ground.) (NAD 83)

REV: 3 11-03-22 J.J. (WELL NAME CHANGE)

PDOP = 1.7

NAD 83 (SURFACE LOCATION)	NAD 83 (TOP PRODUCTION ZONE)	NAD 83 (TARGET BOTTOM HOLE)
LATITUDE = 39°44'46.40" (39.746223°)	LATITUDE = 39°44'52.18" (39.747827°)	LATITUDE = 39°44'55.35" (39.748709°)
LONGITUDE = 104°39'27.22" (104.657562°)	LONGITUDE = 104°39'38.25" (104.660626°)	LONGITUDE = 104°41'48.39" (104.696776°)
STATE PLANE NAD 83 (CO. NORTH)	STATE PLANE NAD 83 (CO. NORTH)	STATE PLANE NAD 83 (CO. NORTH)
N: 1151528.44' E: 3236886.85'	N: 1152104.52' E: 3236019.64'	N: 1152331.71' E: 3225852.06'

UINTAH
ENGINEERING & LAND SURVEYING

UELS, LLC
Corporate Office * 85 South 200 East
Vernal, UT 84078 * (435) 789-1017

SURVEYED BY	MATT MILLER, O.R.	10-27-20	SCALE
DRAWN BY	J.J.	11-11-20	1" = 1000'
WELL LOCATION PLAT			

CERTIFICATE OF REGISTRATION
THIS IS TO CERTIFY THAT THE ABOVE NAMED SURVEYOR HAS COMPLIED WITH THE REQUIREMENTS OF THE COLORADO SURVEYING ACT AND THAT THE SAME ARE TRUE AND CORRECT TO THE BEST OF HIS KNOWLEDGE AND BELIEF.

REGISTERED LAND SURVEYOR
REGISTRATION NO. 28285
STATE OF COLORADO