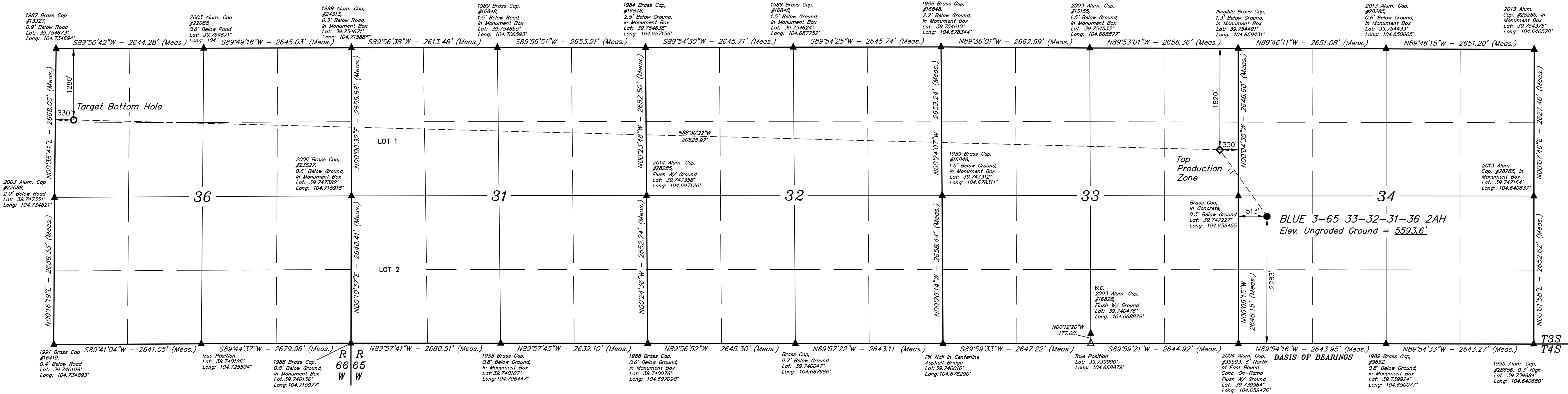
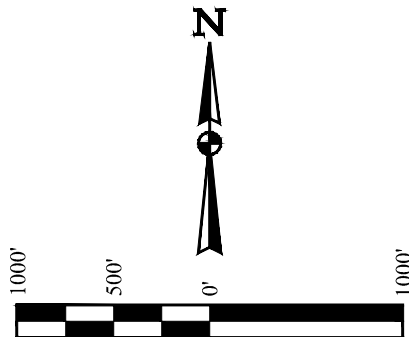


T3S, R65W, 6th P.M.

CRESTONE PEAK RESOURCES OPERATING LLC

BLUE 3-65 33-32-31-36 2AH
NW 1/4 SW 1/4, SECTION 34, T3S, R65W, 6th P.M.
ADAMS COUNTY, COLORADO

BASIS OF ELEVATION
OPUS SOLUTION GENERATED NAVD 88



LINE TABLE		
LINE	DIRECTION	LENGTH
L1	N35°20'53"W	1460.48'

LEGEND:

- = PROPOSED WELLHEAD.
- ◆ = TOP PRODUCTION ZONE.
- = TARGET BOTTOM HOLE.
- ▲ = SECTION CORNERS LOCATED. (NAD 83)
- △ = SECTION CORNERS RE-ESTABLISHED. (Not Set on Ground.) (NAD 83)

REV: 01 08-23-22 K.C. (TBM MOVE)

PDOP = 1.6

UNITAH
UTAH LAND SURVEYING & MAPPING

UELS, LLC
Corporate Office • 85 South 200 East
Vernal, UT 84078 • (435) 789-1017

SURVEYED BY: MATT MILLER, O.R.
DRAWN BY: J.J.

10-27-20
11-11-20
1" = 1000'

SCALE

WELL LOCATION PLAT

NAD 83 (SURFACE LOCATION)	NAD 83 (TOP PRODUCTION ZONE)	NAD 83 (TARGET BOTTOM HOLE)
LATITUDE = 39°44'46.40" (39.746222°)	LATITUDE = 39°44'48.20" (39.749501°)	LATITUDE = 39°45'04.18" (39.751169°)
LONGITUDE = 104°39'27.48" (104.657633°)	LONGITUDE = 104°39'38.23" (104.660621°)	LONGITUDE = 104°44'00.89" (104.733582°)
STATE PLANE NAD 83 (CO. NORTH)	STATE PLANE NAD 83 (CO. NORTH)	STATE PLANE NAD 83 (CO. NORTH)
N 1151526.37' E 3330066.85'	N 1151714.30' E 3330015.36'	N 1151133.04' E 3331505.65'