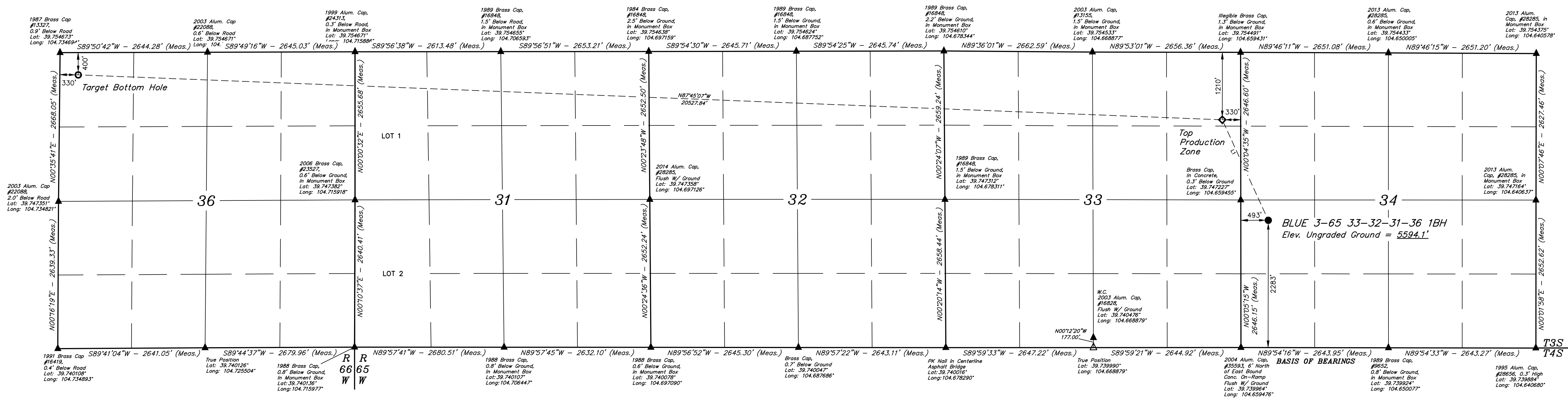
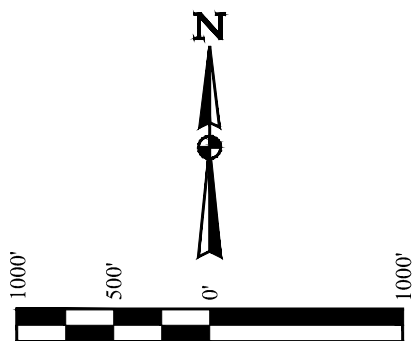


BLUE 3-65 33-32-31-36 1BH
NW 1/4 SW 1/4, SECTION 34, T3S, R65W, 6th P.M
ADAMS COUNTY, COLORADO

BASIS OF ELEVATION
OPUS SOLUTION GENERATED NAVD 8



LINE TABLE		
LINE	DIRECTION	LENGTH
L1	N24°37'39"W	1981.60'

CERTIFICATE

THIS IS TO CERTIFY THAT THE ABOVE WORK WAS PREPARED IN ACCORDANCE WITH THE NOTES OF ACTUAL SURVEYS MADE BY ME OR UNDER MY SUPERVISION, AND THAT THE SAME ARE TRUE AND CORRECT TO THE BEST OF MY KNOWLEDGE AND BELIEF.

[Signature]

REGISTERED

I HEREBY CERTIFY THAT THE ABOVE WAS PREPARED FROM FIELD
 OF EXAMINATION UNDER MY SUPERVISION
 AND ACCORDING TO THE BEST OF MY
 KNOWLEDGE AND BELIEF.

[Signature]
 28285
 REGISTERED LAND SURVEYOR
 REGISTRATION NO. 28285
 STATE OF CALIFORNIA

REV: 01 08-23-22 K.C. (TBH MOVE)

PDOP = 1.7



UINAH
ENGINEERING & LAND SURVEYING

UELS, LLC
Corporate Office * 85 South 200 East
Vernal, UT 84078 * (435) 789-1017

SURVEYED BY	MATT MILLER, O.R.	10-27-20	SCALE
DRAWN BY	J.J.	11-11-20	1" = 1000'

WELL LOCATION PLAT

NAD 83 (SURFACE LOCATION)	NAD 83 (TOP PRODUCTION ZONE)	NAD 83 (TARGET BOTTOM HOLE)
LATITUDE = 39°44'46.40" (39.746222°)	LATITUDE = 39°45'04.23" (39.751175°)	LATITUDE = 39°45'12.87" (39.753575°)
LONGITUDE = 104°39'27.73" (104.657704°)	LONGITUDE = 104°39'38.22" (104.660615°)	LONGITUDE = 104°40'00.74" (104.733540°)
STATE PLANE NAD 83 (CO. NORTH)	STATE PLANE NAD 83 (CO. NORTH)	STATE PLANE NAD 83 (CO. NORTH)
N151528.01 E. 3236846.86'	N1153334.70' E. 3736011.08'	N154017.28' E. 3215490.99'

LEGEND:

- = PROPOSED WELLHEAD.
 ◆ = TOP PRODUCTION ZONE.
 ○ = TARGET BOTTOM HOLE.
 ▲ = SECTION CORNERS LOCATED. (NAD 83)
 △ = SECTION CORNERS RE-ESTABLISHED.
 (Not Set on Ground.) (NAD 83)