

SCALE: 1" = 1000'

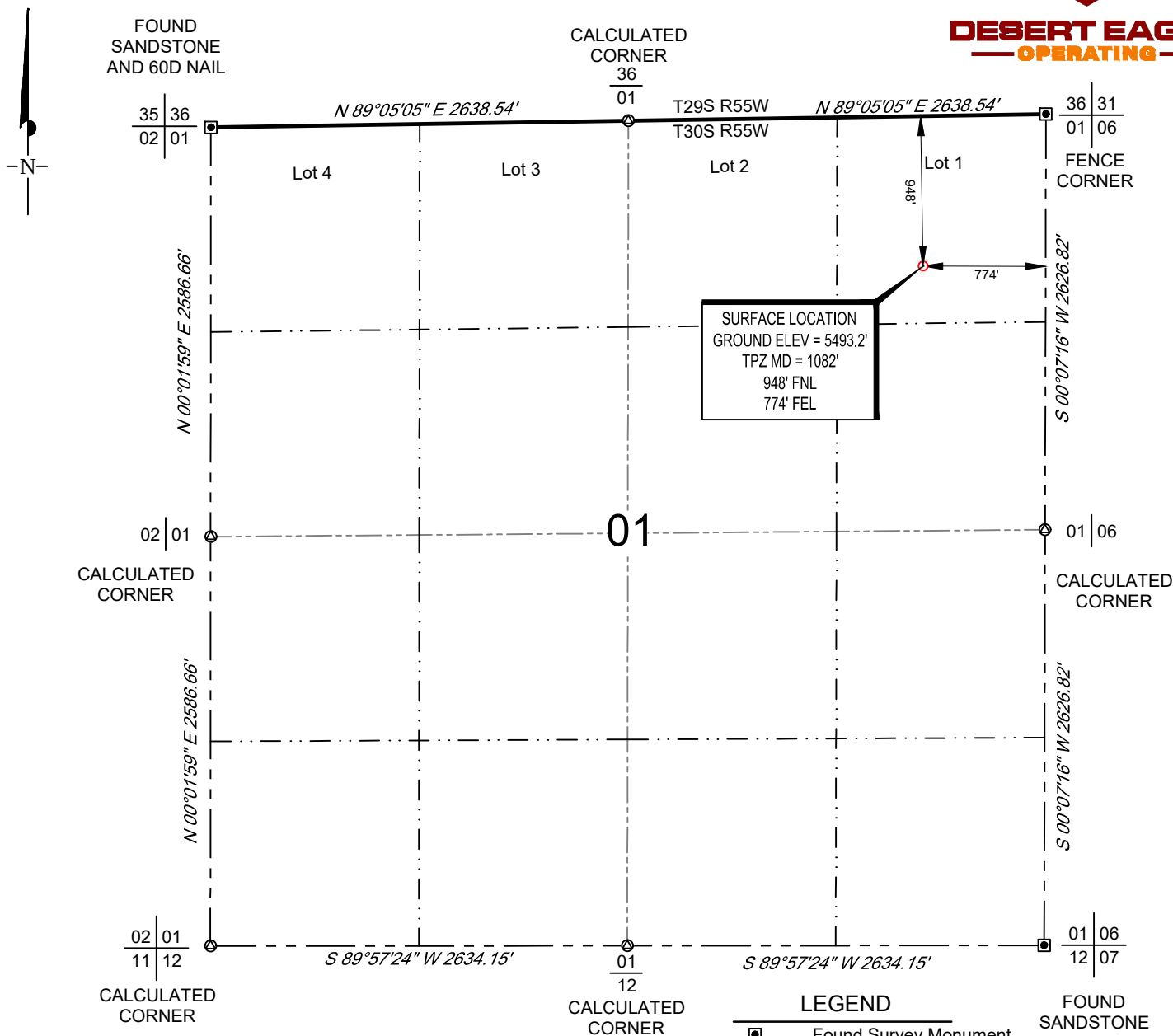
0' 500' 1000'

# WELL LOCATION MAP

SHL LOT 1, SECTION 01, TOWNSHIP 30-S, RANGE 55-W  
LAS ANIMAS COUNTY, COLORADO



**DESERT EAGLE**  
OPERATING



POINT	NAD 83		NAD 27	
SURFACE HOLE LOCATION	N:	1296599.36	N:	296589.91
	E:	3574966.45	E:	2575125.58
	LAT:	N37.4644883	LAT:	N37.4644721
	LONG:	W103.5188250	LONG:	W103.5183259

LEGEND	
	Found Survey Monument
	Calculated Corner Location
	Vertical Well Location
	Section Line
	Quarter Section Line
	Sixteenth Section Line

## NOTES

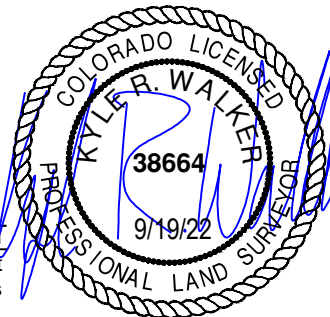
1. Horizontal (NAD 83) and vertical (NAVD 88) datum is based on the Trimble VRS Network or OPUS Solution.
2. All directions, distances, and dimensions shown hereon are based on coordinates from the "Colorado coordinate system of 1983 central zone" (article 52 of title 38, C.R.S.).
3. All section line dimensions shown hereon are based on field measurements of existing monuments and/or physical evidence found in the field unless otherwise indicated.
4. See Form 2A, if applicable for visible improvements within 500' of wellhead.
5. Distances to nearest section lines are measured perpendicularly.
6. This is not a land survey nor land survey plat.

PDOP Reading: 1.1 Instrument Operator: **Kevin Royer**

Date Surveyed: **07/09/2022**

## SURVEYOR'S STATEMENT

The undersigned hereby states that the well location shown hereon was staked on the ground based on existing monumentation and/or physical evidence found in the field and is correct to the best of my knowledge, information and belief.



DESERT EAGLE OPERATING RED ROCKS #1-16	SW	09/15/2022	REVISION:	
	SHEET :	1 OF 1		
	FILE:LO_RED_ROCKS_1_16			