

SCALE: 1" = 1000'

0' 500' 1000'

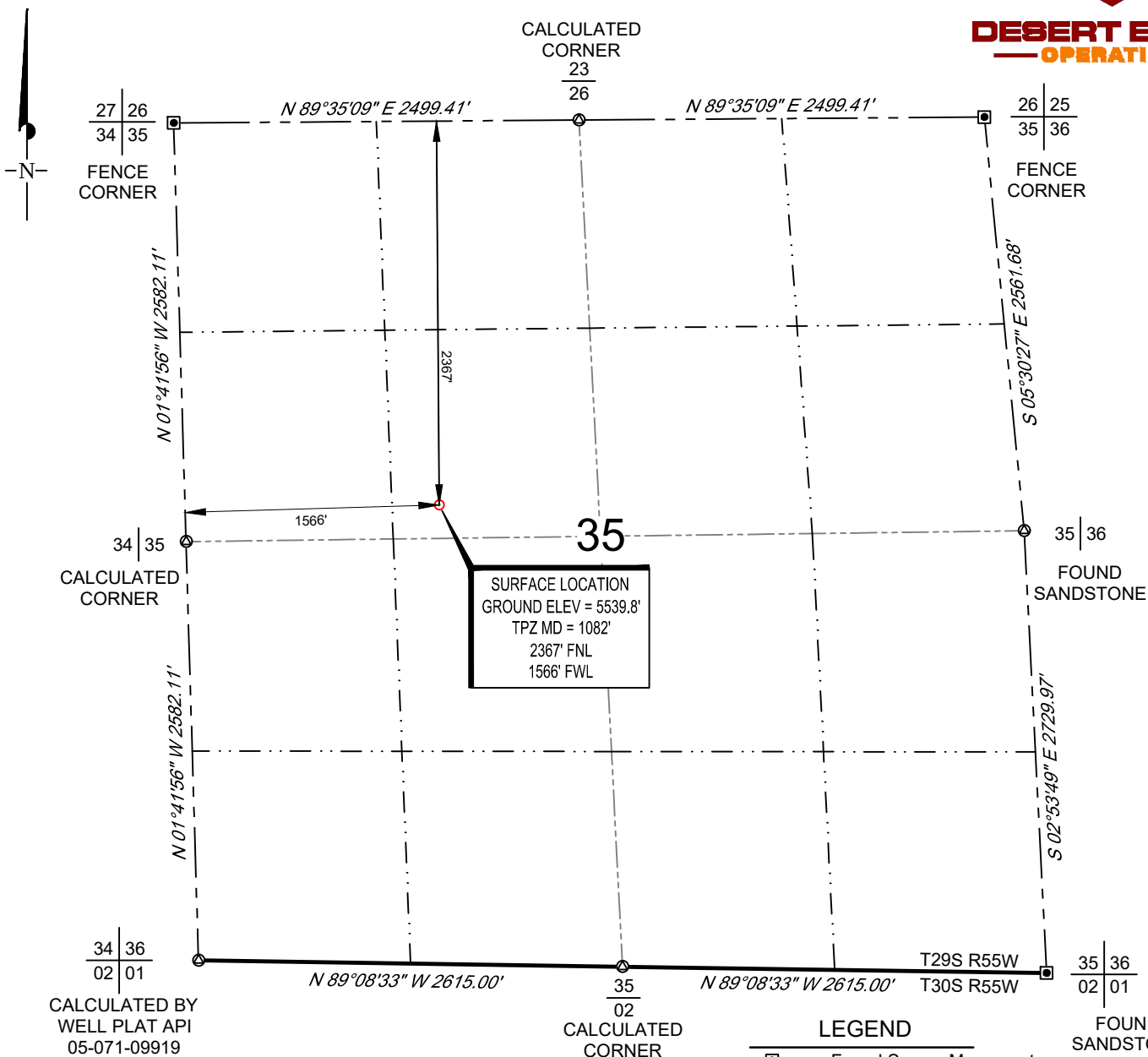
WELL LOCATION MAP

SHL SE/4 NW/4, SECTION 35, TOWNSHIP 29-S, RANGE 55-W
LAS ANIMAS COUNTY, COLORADO



DESERT EAGLE
OPERATING

CALCULATED
CORNER
23
26



POINT	NAD 83	NAD 27
SURFACE HOLE LOCATION	N: 1300361.37	N: 300351.84
	E: 3566720.23	E: 2566879.45
	LAT: N37.4752948	LAT: N37.4752787
	LONG: W103.5469599	LONG: W103.5464597

NOTES

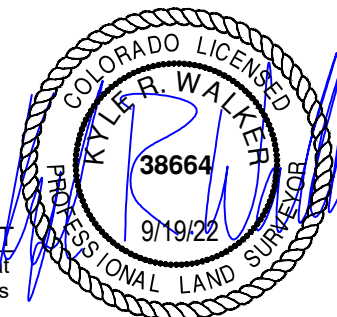
- Horizontal (NAD 83) and vertical (NAVD 88) datum is based on the Trimble VRS Network or OPUS Solution.
- All directions, distances, and dimensions shown hereon are based on coordinates from the "Colorado coordinate system of 1983 central zone" (article 52 of title 38, C.R.S.).
- All section line dimensions shown hereon are based on field measurements of existing monuments and/or physical evidence found in the field unless otherwise indicated.
- See Form 2A, if applicable for visible improvements within 500' of wellhead.
- Distances to nearest section lines are measured perpendicularly.
- This is not a land survey nor land survey plat.

PDOP Reading: 1.1 Instrument Operator: **Kevin Royer**

Date Surveyed: **07/09/2022**

SURVEYOR'S STATEMENT

The undersigned hereby states that the well location shown hereon was staked on the ground based on existing monumentation and/or physical evidence found in the field and is correct to the best of my knowledge, information and belief.



DESERT EAGLE OPERATING RED ROCKS #35-11	SW	09/15/2022	REVISION:
	SHEET :	1 OF 1	
	FILE:LO_RED_ROCKS_35_11		