

Found within this document are the proposal plan from Helena Resources, Inc (HRI) for the Form 3 Operator and Single Well Financial Assurance Documents.

As an owner-operator, and active bidder for full service Plug and Abandonment in the Colorado Orphan Well Program, and as an active bidder in the Denver International Airport, City of Denver plug and abandonment program, Helena Resources, Inc. is uniquely suited to submit its assessment of plug and abandonment procedures and costs associated with the wells it operates in Colorado.

Helena Resources, Inc is a Native American, minority-owned Colorado-based company. We will use our team and collective relationships with subcontractors to perform the proper plugging and abandonment of wells and demolishing and remediating associated surface facilities as outlined as per the requirements of the COGCC.

The following is included as support for the Operator Specific Single Well Financial Assurance:

- 1) Tabulated Sum of Wellbore Specific Costs
- 2) Associated line item costs for each required instrument to accomplish wellbore abandonment and battery de-construction and site rehabilitation.
- 3) Current Wellbore Diagrams
- 4) Proposed P&A Wellbore Diagrams
- 5) Proposed P&A Procedures for Each Wellbore
- 6) Associated line item costs for each required instrument to accomplish the proposed procedure specific to each well.
- 7) Inventory on each consolidated battery
- 8) Surface GIS maps of the wells and consolidated tank batteries
- 9) Photos of the wells and consolidated tank batteries, including inventory on each battery.
- 10) A tabulated total cost to be surrendered for Financial Assurance, as proposed by the Operator.

All costs include real quotes from main subcontractors to cover well costs, tool costs, roustabout and welding costs, mobilization and movement costs, and remediation costs.

Helena Resources, Inc. has a team that has a collective experience of over 70 years in the oil and gas industry working for operating and service companies, with specific experience plugging wells in the state of Colorado. The president of Helena Resources, Inc. is a Colorado certified, licensed Professional petroleum engineer, with specific efficiencies in operations and job design.

Asset Retirement Planning

Helena's operated 18 wells currently produce approximately 300 MSCFD and 40 BOPD and have an anticipated life exceeding 20 years. As wells become uneconomic, the current financial assurance requirements as proposed by the State, incentivize proper upkeep of plug and abandonment of wells incapable of economic production. Helena has attached current wellbore diagrams and proposed plug and abandonment diagrams for each well it operates, and anticipates executing on the subject plug and abandonment procedures, either when 1) offset fracture stimulation from horizontal wells require it, or wells have reached their economic limit. Low producing wells,

either need repair and return to production, recompleted, or plugged according to the current financial assurance requirements.

The House 24-7 # 1 is the only low producing well that has been SI due to a hole in tubing and is waiting on a rig.

The Bredehoft 13-6 was returned to production and is waiting on a rig for rods due to excessive oil volume, and will no longer be a low producing well.

The Sack 12-6 is making over 60 MSCFD and 1 BOPD following production optimization and is no longer a low producing well.

The Ruby 2 is a low producing well that is likely to be plugged due to frac protect requirements pending.

Signed,



Theodore Pagano,
Licensed Colorado Professional Petroleum Engineer No. 39826
President and Owner
Helena Resources, Inc.
February 1, 2023



1) Tabulated Sum of Wellbore Specific Costs

P&A Tabulation

**Helena Resources,
Inc.**

Common Site Name	Item No.	Description	Units	Qty	Unit Cost	Total
Ambush 13-22	1	Plug and Abandoned well per Wellbore Diagram	EA	1	\$19,195.00	\$19,195.00
UPRR BRNK 31-33	2	Plug and Abandoned well per Wellbore Diagram	EA	1	\$19,030.00	\$19,030.00
Sack 12-06	3	Plug and Abandoned well per Wellbore Diagram	EA	1	\$20,927.50	\$20,927.50
Bredehoft 13-06	4	Plug and Abandoned well per Wellbore Diagram	EA	1	\$19,195.00	\$19,195.00
Zarlengo 2	5	Plug and Abandoned well per Wellbore Diagram	EA	1	\$19,745.00	\$19,745.00
Zarlengo 21-4	6	Plug and Abandoned well per Wellbore Diagram	EA	1	\$19,195.00	\$19,195.00
Zarlengo 24-4	7	Plug and Abandoned well per Wellbore Diagram	EA	1	\$20,927.50	\$20,927.50
Zarlengo 23-4	8	Plug and Abandoned well per Wellbore Diagram	EA	1	\$19,195.00	\$19,195.00
Zarlengo 14-14	9	Plug and Abandoned well per Wellbore Diagram	EA	1	\$19,690.00	\$19,690.00
Gutherie 21-2	10	Plug and Abandoned well per Wellbore Diagram	EA	1	\$19,195.00	\$19,195.00
Gutherie 22-2	11	Plug and Abandoned well per Wellbore Diagram	EA	1	\$19,195.00	\$19,195.00
Gutherie 41-2	12	Plug and Abandoned well per Wellbore Diagram	EA	1	\$19,195.00	\$19,195.00
Gutherie 42-2	13	Plug and Abandoned well per Wellbore Diagram	EA	1	\$19,195.00	\$19,195.00
House 24-7 1	14	Plug and Abandoned well per Wellbore Diagram	EA	1	\$17,814.50	\$17,814.50
Newton 1-4H	15	Plug and Abandoned well per Wellbore Diagram	EA	1	\$26,059.87	\$26,059.87
LW Moore 1	16	Plug and Abandoned well per Wellbore Diagram	EA	1	\$19,195.00	\$19,195.00
Ruby 2	17	Plug and Abandoned well per Wellbore Diagram	EA	1	\$20,597.50	\$20,597.50
Gasper 11-1	18	Plug and Abandoned well per Wellbore Diagram	EA	1	\$19,195.00	\$19,195.00
Ambush 13-22 Tank Battery	19	Contract Section 4.7 Decommission Prod. Equipment	EA	1	\$8,640.50	\$8,640.50
UPRR BRNK 31-33 Tank Battery	20	Contract Section 4.7 Decommission Prod. Equipment	EA	1	\$8,640.50	\$8,640.50
Sack 12-06 Tank Battery	21	Contract Section 4.7 Decommission Prod. Equipment	EA	1	\$8,079.50	\$8,079.50
Zarlengo 21-4/2 Tank Battery	22	Contract Section 4.7 Decommission Prod. Equipment	EA	1	\$8,189.50	\$8,189.50
Zarlengo 23-4/23 Tank Battery	23	Contract Section 4.7 Decommission Prod. Equipment	EA	1	\$8,222.50	\$8,222.50
Zarlengo 14-14 Tank Battery	24	Contract Section 4.7 Decommission Prod. Equipment	EA	1	\$8,827.50	\$8,827.50
Gutherie Tank Battery	25	Contract Section 4.7 Decommission Prod. Equipment	EA	1	\$10,323.50	\$10,323.50
Hous 24-7 1 Tank Battery	26	Contract Section 4.7 Decommission Prod. Equipment	EA	1	\$6,959.70	\$6,959.70
Newton 1-4H Tank Battery	27	Contract Section 4.7 Decommission Prod. Equipment	EA	1	\$24,989.80	\$24,989.80
LW Moore Tank Battery	28	Contract Section 4.7 Decommission Prod. Equipment	EA	1	\$9,102.50	\$9,102.50
Ruby 2 Tank Battery	29	Contract Section 4.7 Decommission Prod. Equipment	EA	1	\$9,102.50	\$9,102.50
GRAND TOTALS BY UNIT PRICES >						\$467,819.87



- 2) Associated line item costs for each required instrument to accomplish wellbore abandonment and battery de-construction and site rehabilitation.

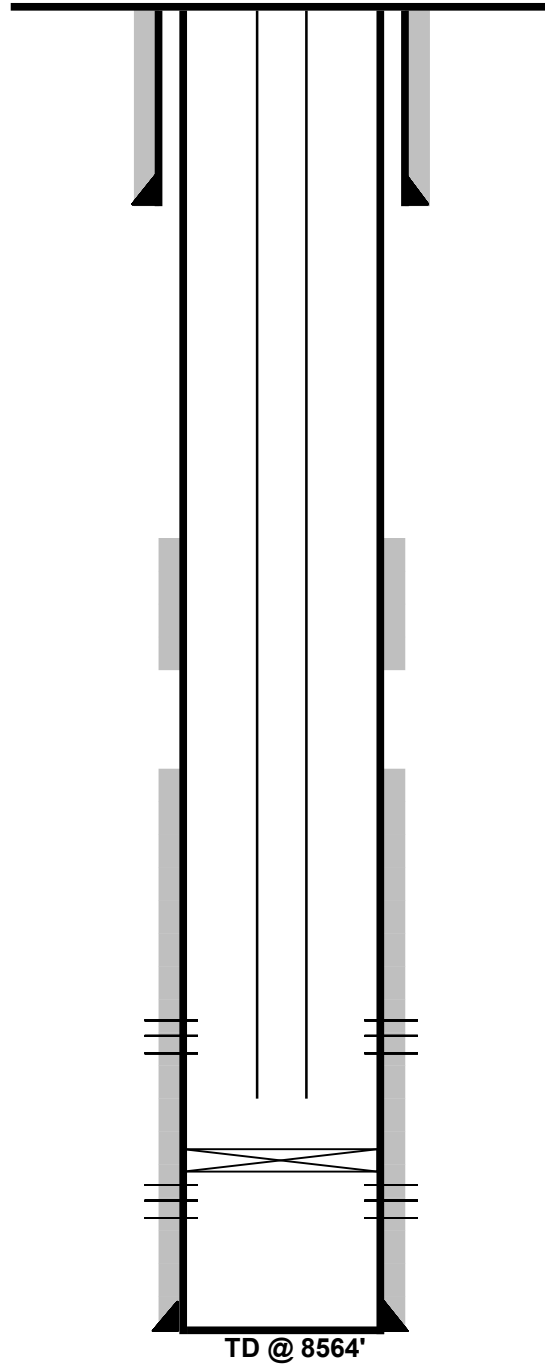


- 3) Current Wellbore Diagrams
- 4) Proposed P&A Wellbore Diagrams
- 5) Proposed P&A Procedures for Each Wellbore
- 6) Associated line item costs for each required instrument to accomplish the proposed procedure specific to each well.

Zarlengo 24-4

GL = 5178'
KB = 5187'
KB = 9.0'

API #: 05-001-09555-00
NESW Sec. 4 T1S R67W 6 PM
ADAMS COUNTY, CO
CURRENT WELLBORE DIAGRAM



SURFACE CASING

12 1/4" Hole
8 5/8" 24# @ 1332'
CMT with 545 SX
TOC @ Surface

PRODUCTION STRING

2 3/8" 4.7# J-55 8RD tubing
XN Nipple
TOTAL @ 8376'
7/8 Rods

PRODUCTION CASING

7 7/8" Hole
4 1/2" 11.6# to 8559'
CMT with 275 SX 1st STG
TOC @ 6919'
CMT with 185 SX SC
Btm 5396'
TOC @ 4500'

Niobrara - Codell Perfs

7500-7970'
256 Perfs ; Size .38 inches

CIBP at +/- 8343'

J-Sand Perfs

8393-8424'
81 Perfs ; Size .38 inches

TD @ 8564'



Zarlengo 24-4

API #: 05-001-09555-00

NESW Sec. 4 T1S R67W 6 PM

ADAMS COUNTY, CO

CURRENT WELLBORE DIAGRAM

GL = 5178'

KB = 5187'

KB = 9.0'

PROPOSED PLUG/CIBPS

10 SX plug at
@ 100' to surface

SQUEEZE PERFS AT 1382'
SQUEEZE WITH 40 SX

30 SX Plug from
1432-1232

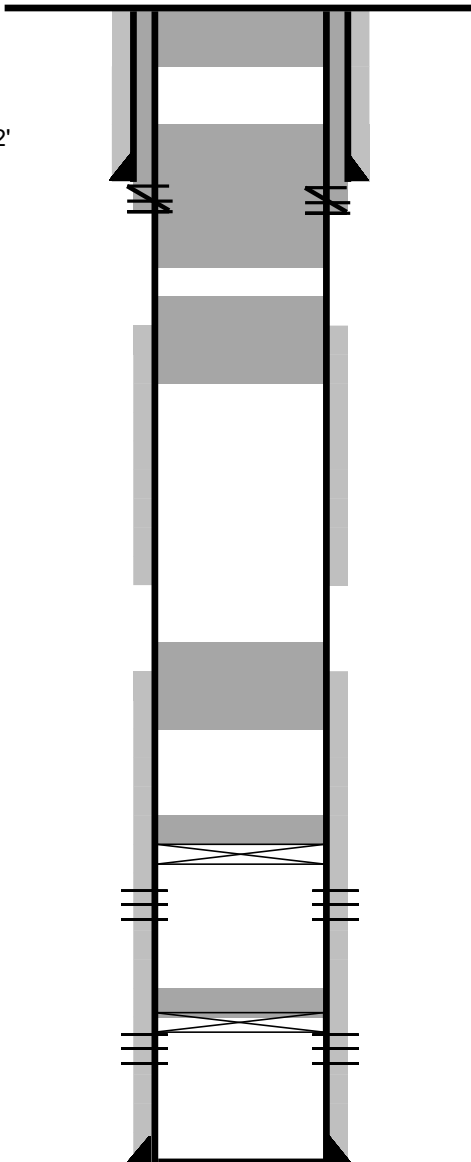
30 SX Plug from
4550-4350

30 SX Plug from
4650'-4450

30 SX Plug from
6969-6769

Proposed
CIBP @ 8394
w 2 SX Cement on top

Dump bail to SX



TD @ 8564'

SURFACE CASING

12 1/4" Hole
8 5/8" 24# @ 1332'
CMT with 545 SX
TOC @ Surface

PRODUCTION CASING

7 7/8" Hole
4 1/2" 11.6# to 8559'
CMT with 275 SX 1st STG
TOC @ 6919'
CMT with 185 SX SC
Btm 5396'
TOC @ 4500'

Niobrara - Codell Perfs

7500-7970'
256 Perfs ; Size .38 inches

CIBP at +/- 8343'

J-Sand Perfs

8393-8424'
81 Perfs ; Size .38 inches

PROCEDURE

- 1 MIRU. POOH Tubing while standing back.
- 2 RIH and Set CIBP as per WBD. Dump bail 2 SX cement on top.
- 3 PUH and shoot squeeze holes 50' below surface shoe.
- 4 MIRU Cementers. RIH and set balanced plugs as per wellbore diagram.
- 5 Spot squeeze cement. Initiate circulator to surface.
- 6 Initiate surface squeeze. Hesitate.
- 7 Spot last balanced plug across sqz. Tag surface plug with sandline.
- 8 RDMO.
- 9 Place 10 SX cement and surface. Cut wellhead off 10' below ground level.
- # Begin surface reclamation.

RATES AND FEES SCHEDULE OF PRICES AND QUANTITIES **\$ 20,927.50**
DEN OIL FIELD CLOSURE SERVICES **COST**

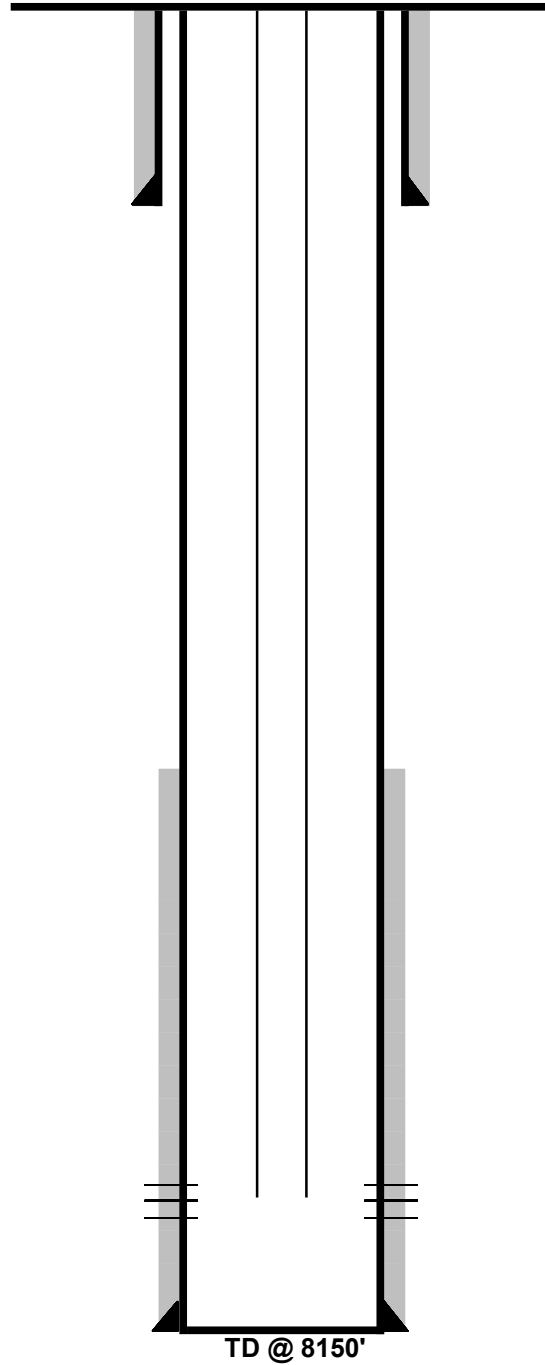
Description	Units	Quoted Price	Quantity	Total
Workover Rig Services				
Rig Charge - Operator with two person crew,	Hour	\$ 260.00	19	\$ 4,940.00
Tubing Tongs, Air Slips, Swabbing tools	Hour	\$ 50.00		
Extra Labor, Per Person	Hour	\$ 210.00	4	\$ 840.00
Travel Time	Hour	\$ 750.00		
Pusher	Day			
Base Beam	Day			
B.O.P.	Day	\$ 280.00	2	\$ 560.00
Wiping Rubber Tbg	well	\$ 45.00		
Wiping Rubber Rods	well	\$ 45.00		
Pump & Tank	Day	\$ 187.50	2	\$ 375.00
Power Swivel	Day	\$ 750.00		
Flange	well	\$ 40.00		
Washington Head & Rubber	Day	\$ 425.00		
Backhoe, if available	Hour	\$ 65.00		
Cement	Sack	\$ 15.00	160	\$ 2,400.00
Cement Retainer 4 1/2"	bid	\$ 673.44		
Cement Retainer 5 1/2"	bid	\$ 673.44		
Cement Retainer 7"	bid	\$ 673.44		
CIBP 4 1/2"	bid	\$ 675.00	2	\$ 1,350.00
CIBP 5 1/2"	bid	\$ 673.44		
CIBP 7"	bid	\$ 673.44		
Thread dope	well	\$ 50.00	1	\$ 50.00
Tubing trailer	Day	\$ 100.00		
Hydrotesting 8,000'	well	\$ 1,375.00		
CBL - 8,000' to surface	well	\$ 3,000.00		
CBL - 2,000' to surface	well	\$ 1,800.00		
WL CIBP 8,000'	well	\$ 1,550.00	1	\$ 1,550.00
WL Dump Bail 2 sx	well	\$ 450.00	2	\$ 900.00
WL Squeeze hole 7,000'	well	\$ 625.00		
WL Squeeze hole 3,000'	well	\$ 750.00		
WL Squeeze hole 1,800'	well	\$ 625.00	1	\$ 625.00
or	cost plus %			
Winch Truck	Hour	\$ 135.00		
or	cost plus %			
Hydrovac	Hour			
or	cost plus %	\$ 0.15		
Disposal	BBL			
Other services - backhoe, welder, cut/cap well, skidster		\$ 1,000.00		
Wireline Set-Up	Day	\$ 1,725.00		
Cement Pumping Charge	Day	\$ 3,000.00	1	\$ 3,000.00
Frac Tank	Day	\$ 15.00		
Wireline Crew (Per Diem or Mileage)	Day	\$ 400.00		
Cement Tank	Day	\$ 200.00		
Water Hauling/Trucking				

80/100 BBL Bobtail	Hour	\$ 95.00		
80/100 BBL Bobtail Hazmat	Hour	\$ 120.00		
130/150 BBL Transport	Hour	\$ 110.00	8	\$ 880.00
130/150 BBL Transport Hazmat	Hour	\$ 135.00		
Winch Truck	Hour	\$ 115.00		
Laborer and Pickup	Hour	\$ 40.00		
Heavy Hauler Trailer	Hour	\$ 150.00		
Swamper (Laborer)	Hour	\$ 35.00		
Hydrovac	Hour	\$ 220.00		
Water per BBL	BBL	\$ 1.00	400	\$ 400.00
Solids & Liquids Disposal	BBL/CY	\$ 45.00		
Tubing Float (semi-flatbed)	Day	\$ 100.00		
Roustabout Services				
Roustabout Foreman with Truck	Hour	\$ 71.00	5	\$ 355.00
Roustabout Truck with Foreman and Trailer	Hour	\$ 96.00		
Backhoe	Hour	\$ 65.00	5	\$ 325.00
Skidsteer	Hour	\$ 45.00		
Extra Labor, Per Person	Hour	\$ 36.00		
Generator	Hour	\$ 10.00		
Mobile Steamer - Hotsy	Hour	\$ 50.00		
Welder	Hour	\$ 95.00	5	\$ 475.00
Hydrovac	Hour			
or	cost plus %	15%		
Mini excavator	Hour	\$ 55.00		
Vacuum Truck	Hour	\$ 100.00		
or	cost plus %			
Dump Truck	Hour	\$ 75.00		
Side Dump	Hour	\$ 100.00		
Hot Oil Services				
Hot Oiler	Hour	\$ 145.00		
Propane	Gal	\$ 2.35		
Contingents				
Contingent %	Percent	10.00%		\$ 1,902.50
ESTIMATED PLUGGING COST				\$ 19,025.00
ESTIMATED TOTAL COST WITH CONTINGENT				\$ 20,927.50

Ambush 13-22

GL = 5319'
KB = 5328'
KB = 9.0'

API #: 05-001-09092-00
NWSW Sec. 22 T2S R64W 6 PM
ADAMS COUNTY, CO
CURRENT WELLBORE DIAGRAM



SURFACE CASING

12 1/4" Hole
8 5/8" 23# @ 1530'
CMT with 570 SX
TOC @ Surface

PRODUCTION STRING

2 3/8" 4.7# J-55 8RD tubing
XN Nipple
TOTAL @ 7920'

PRODUCTION CASING

7 7/8" Hole
4 1/2" 11.6# to 8141'
CMT with 360 SX
TOC @ 6780'

J-Sand Perfs

7962-7988'
52 Perfs ; Size .38 inches

Ambush 13-22

API #: 05-001-09092-00

NWSW Sec. 22 T2S R64W 6 PM

ADAMS COUNTY, CO

PROPOSED WELLBORE DIAGRAM

GL = 5319'

KB = 5328'

KB = 9.0'

PROPOSED PLUG/CIBPS

10 SX plug at
@ 100' to surface

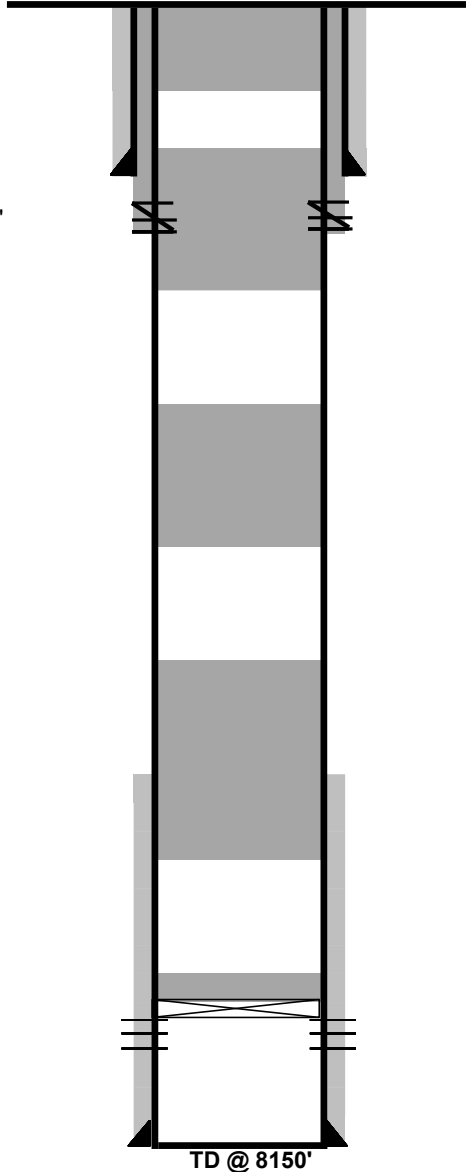
SQUEEZE PERFS AT 1580'
SQUEEZE WITH 40 SX

30 SX Plug from
1500-1300

30 SX Plug from
3700-3500

30 SX Plug from
6700-6500

Proposed
CIBP @ 7962'
w 2 SX Cement on top



SURFACE CASING

12 1/4" Hole
8 5/8" 23# @ 1530'
CMT with 570 SX
TOC @ Surface

PRODUCTION STRING

2 3/8" 4.7# J-55 8RD tubing
XN Nipple
TOTAL @ 7920'

PRODUCTION CASING

7 7/8" Hole
4 1/2" 11.6# to 8141'
CMT with 360 SX
TOC @ 6780'

CIBP AT 7911
7911

J-Sand Perfs
7962-7988'
52 Perfs ; Size .38 inches

TD @ 8150'

PROCEDURE

- 1 MIRU. POOH Tubing while standing back.
- 2 RIH and Set CIBP according to WBD. Dump bail 2 SX cement on top.
- 3 PUH and shoot squeeze holes 50' below surface shoe.
- 4 MIRU Cementers. RIH and set balanced plugs as per wellbore diagram.
- 5 Spot squeeze cement. Initiate circulation to surface.
- 6 Initiate surface squeeze. Hesitate.
- 7 Tag surface plug with sandline.
- 8 RDMO.
- 9 Place 10 SX cement and surface. Cut wellhead off 10' below ground level.
- 10 Begin surface reclamation.

Equipment on Location

- 1 Remove Separators and Tanks.
- 2 Cut and cap flow lines
- 3 Work base, soil, and seed

HRs

5
1.5
0.5
3
0.5
2.5
2
4
19

COST \$ 19,195.00

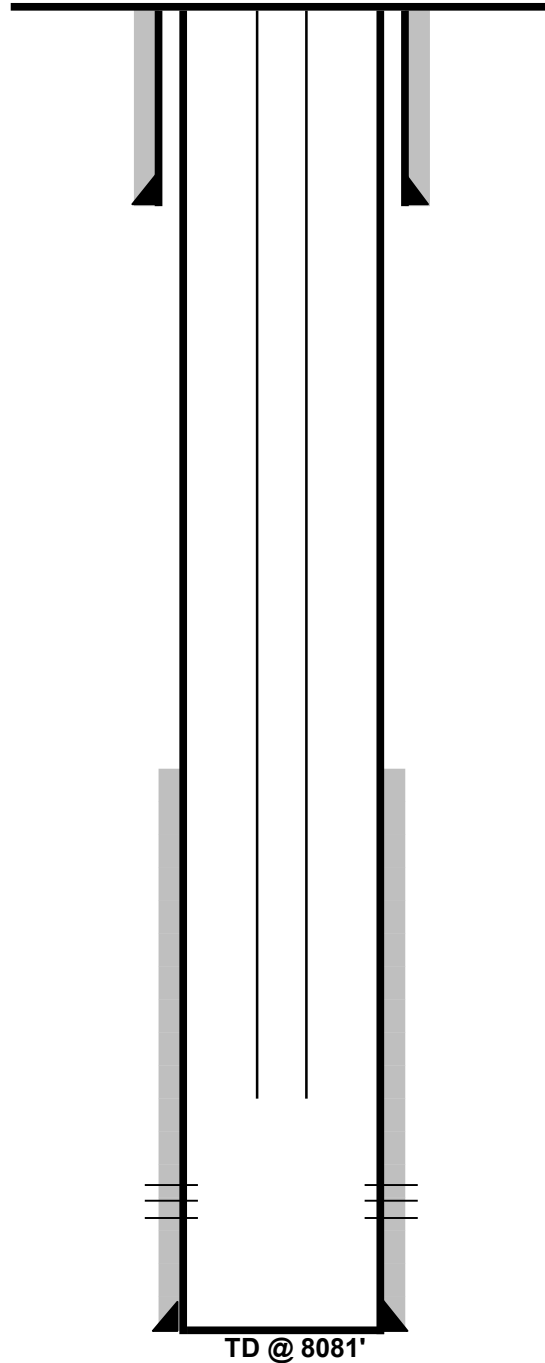
Description	Units	Quoted Price	Quantity	Total
Workover Rig Services				
Rig Charge - Operator with two person crew, Tubing Tongs, Air Slips, Swabbing tools	Hour	\$ 260.00	19	\$ 4,940.00
Extra Labor, Per Person	Hour	\$ 50.00		
Travel Time	Hour	\$ 210.00	4	\$ 840.00
Pusher	Day	\$ 750.00		
Base Beam	Day			
B.O.P.	Day	\$ 280.00	2	\$ 560.00
Wiping Rubber Tbg	well	\$ 45.00		
Wiping Rubber Rods	well	\$ 45.00		
Pump & Tank	Day	\$ 187.50	2	\$ 375.00
Power Swivel	Day	\$ 750.00		
Flange	well	\$ 40.00		
Washington Head & Rubber	Day	\$ 425.00		
Backhoe, if available	Hour	\$ 65.00		
Cement	Sack	\$ 15.00	130	\$ 1,950.00
Cement Retainer 4 1/2"	bid	\$ 675.00		
Cement Retainer 5 1/2"	bid	\$ 675.00		
Cement Retainer 7"	bid	\$ 675.00		
CIBP 4 1/2"	bid	\$ 675.00	1	\$ 675.00
CIBP 5 1/2"	bid	\$ 675.00		
CIBP 7"	bid	\$ 675.00		
Thread dope	well	\$ 50.00	1	\$ 50.00
Tubing trailer	Day	\$ 100.00		
Hydrotesting 8,000'	well	\$ 1,375.00		
CBL - 8,000' to surface	well	\$ 3,000.00		
CBL - 2,000' to surface	well	\$ 1,800.00		
WL CIBP 8,000'	well	\$ 1,550.00	1	\$ 1,550.00
WL Dump Bail 2 sx	well	\$ 450.00	1	\$ 450.00
WL Squeeze hole 7,000'	well	\$ 625.00		
WL Squeeze hole 3,000'	well	\$ 750.00		
WL Squeeze hole 1,800'	well	\$ 625.00	1	\$ 625.00
or	cost plus %			
Winch Truck	Hour	\$ 135.00		
or	cost plus %			
Hydrovac	Hour			
or	cost plus %	\$ 0.15		
Disposal	BBL			
Other services - backhoe, welder, cut/cap well, skidster		\$ 1,000.00		
Wireline Set-Up	Day	\$ 1,725.00		
Cement Pumping Charge	Day	\$ 3,000.00	1	\$ 3,000.00
Frac Tank	Day	\$ 15.00		
Wireline Crew (Per Diem or Mileage)	Day	\$ 400.00		
Cement Tank	Day	\$ 200.00		
Water Hauling/Trucking				
80/100 BBL Bobtail	Hour	\$ 95.00		

80/100 BBL Bobtail Hazmat	Hour	\$ 120.00		
130/150 BBL Transport	Hour	\$ 110.00	8	\$ 880.00
130/150 BBL Transport Hazmat	Hour	\$ 135.00		
Winch Truck	Hour	\$ 115.00		
Laborer and Pickup	Hour	\$ 40.00		
Heavy Hauler Trailer	Hour	\$ 150.00		
Swamper (Laborer)	Hour	\$ 35.00		
Hydrovac	Hour	\$ 220.00		
Water per BBL	BBL	\$ 1.00	400	\$ 400.00
Solids & Liquids Disposal	BBL/CY	\$ 45.00		
Tubing Float (semi-flatbed)	Day	\$ 100.00		
Roustabout Services				
Roustabout Foreman with Truck	Hour	\$ 71.00	5	\$ 355.00
Roustabout Truck with Foreman and Trailer	Hour	\$ 96.00		
Backhoe	Hour	\$ 65.00	5	\$ 325.00
Skidsteer	Hour	\$ 45.00		
Extra Labor, Per Person	Hour	\$ 36.00		
Generator	Hour	\$ 10.00		
Mobile Steamer - Hotsy	Hour	\$ 50.00		
Welder	Hour	\$ 95.00	5	\$ 475.00
Hydrovac	Hour			
or	cost plus %	15%		
Mini excavator	Hour	\$ 55.00		
Vacuum Truck	Hour	\$ 100.00		
or	cost plus %			
Dump Truck	Hour	\$ 75.00		
Side Dump	Hour	\$ 100.00		
Hot Oil Services				
Hot Oiler	Hour	\$ 145.00		
Propane	Gal	\$ 2.35		
Contingents				
Contingent %	Percent	10.00%		\$ 1,745.00
ESTIMATED WELLBORE PLUGGING COST				\$ 17,450.00
ESTIMATED TOTAL COST WITH CONTINGENT				\$ 19,195.00

Bredehoft 13-6

GL = 5082'
KB = 5092'
KB = 10.0'

API #: 05-001-09291-00
NWSW Sec. 6 T1S R67W 6 PM
ADAMS COUNTY, CO
CURRENT WELLBORE DIAGRAM



SURFACE CASING

12 1/4" Hole
8 5/8" 24# @ 943'
CMT with 680 SX
TOC @ Surface

PRODUCTION STRING

2 3/8" 4.7# J-55 8RD tubing
Seat Nipple Notch Collar
TOTAL @ 7895'

PRODUCTION CASING

7 7/8" Hole
4 1/2" 11.6# to 8091'
CMT with 476 SX
TOC @ 4300'

Niobrara - Codell Perfs

7467-7924
220 holes, .38 holes

TD @ 8081'

Bredehoft 13-6

API #: 05-001-09291-00

NWSW Sec. 6 T1S R67W 6 PM

ADAMS COUNTY, CO

P&A Wellbore

GL = 5082'

KB = 5092'

KB = 10.0'

PROPOSED PLUG/CIBPS

10 SX plug at
@ 100' to surface

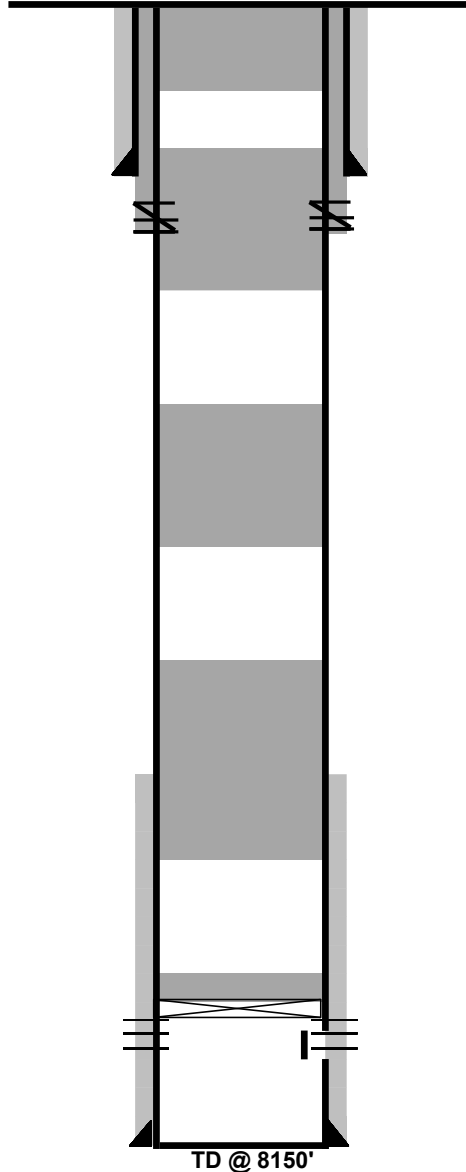
SQUEEZE PERFS AT 630'
SQUEEZE WITH 40 SX

30 SX Plug from
1500-1300

30 SX Plug from
3700-3500

30 SX Plug from
6700-6500

Proposed
CIBP @ 7417'
w 2 SX Cement on top



SURFACE CASING

12 1/4" Hole
8 5/8" 24# @ 943'
CMT with 680 SX
TOC @ Surface

PRODUCTION CASING

7 7/8" Hole
4 1/2" 11.6# to 8091'
CMT with 476 SX
TOC @ 4300'

Niobrara - Codell Perfs

7467-7924
220 holes, .38 holes

PROCEDURE

- 1 MIRU. POOH Tubing while standing back.
- 2 RIH and Set CIBP at 7962'. Dump bail 2 SX cement on top.
- 3 PUH and shoot squeeze holes at 1580', 50' below surface shoe.
- 4 MIRU Cementers. RIH and set balanced plugs as per wellbore diagram.
- 5 Spot squeeze cement. Initiate circulation to surface.
- 6 Initiate surface squeeze. Hesitate.
- 7 Tag surface plug with sandline.
- 8 RDMO.
- 9 Place 10 SX cement and surface. Cut wellhead off 10' below ground level.
- # Begin surface reclamation.

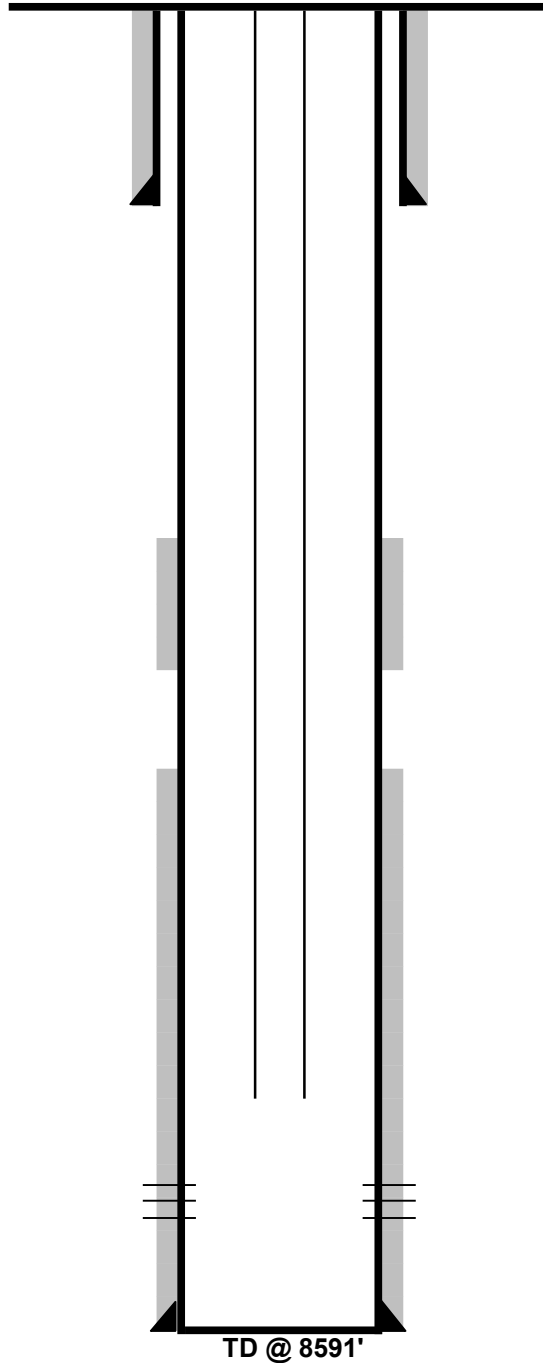
RATES AND FEES SCHEDULE OF PRICES AND QUANTITIES			COST	\$ 19,140.00
Description	Units	Quoted Price	Quantity	Total
Workover Rig Services				
Rig Charge - Operator with two person crew, Tubing Tongs, Air Slips, Swabbing tools	Hour	\$ 260.00	19	\$ 4,940.00
Extra Labor, Per Person	Hour	\$ 50.00		
Travel Time	Hour	\$ 210.00	4	\$ 840.00
Pusher	Day	\$ 750.00		
Base Beam	Day			
B.O.P.	Day	\$ 280.00	2	\$ 560.00
Wiping Rubber Tbg	well	\$ 45.00		
Wiping Rubber Rods	well	\$ 45.00		
Pump & Tank	Day	\$ 187.50	2	\$ 375.00
Power Swivel	Day	\$ 750.00		
Flange	well	\$ 40.00		
Washington Head & Rubber	Day	\$ 425.00		
Backhoe, if available	Hour	\$ 65.00		
Cement	Sack	\$ 15.00	130	\$ 1,950.00
Cement Retainer 4 1/2"	bid	\$ 673.44		
Cement Retainer 5 1/2"	bid	\$ 673.44		
Cement Retainer 7"	bid	\$ 673.44		
CIBP 4 1/2"	bid	\$ 675.00	1	\$ 675.00
CIBP 5 1/2"	bid	\$ 673.44		
CIBP 7"	bid	\$ 673.44		
Thread dope	well	\$ 50.00		
Tubing trailer	Day	\$ 100.00		
Hydrotesting 8,000'	well	\$ 1,375.00		
CBL - 8,000' to surface	well	\$ 3,000.00		
CBL - 2,000' to surface	well	\$ 1,800.00		
WL CIBP 8,000'	well	\$ 1,550.00	1	\$ 1,550.00
WL Dump Bail 2 sx	well	\$ 450.00	1	\$ 450.00
WL Squeeze hole 7,000'	well	\$ 625.00		
WL Squeeze hole 3,000'	well	\$ 750.00		
WL Squeeze hole 1,800'	well	\$ 625.00	1	\$ 625.00
or	cost plus %			
Winch Truck	Hour	\$ 135.00		
or	cost plus %			
Hydrovac	Hour			
or	cost plus %	\$ 0.15		
Disposal	BBL			
Other services - backhoe, welder, cut/cap well, skidster		\$ 1,000.00		
Wireline Set-Up	Day	\$ 1,725.00		
Cement Pumping Charge	Day	\$ 3,000.00	1	\$ 3,000.00
Frac Tank	Day	\$ 15.00		
Wireline Crew (Per Diem or Mileage)	Day	\$ 400.00		
Cement Tank	Day	\$ 200.00		
Water Hauling/Trucking				
80/100 BBL Bobtail	Hour	\$ 95.00		

80/100 BBL Bobtail Hazmat	Hour	\$ 120.00		
130/150 BBL Transport	Hour	\$ 110.00	8	\$ 880.00
130/150 BBL Transport Hazmat	Hour	\$ 135.00		
Winch Truck	Hour	\$ 115.00		
Laborer and Pickup	Hour	\$ 40.00		
Heavy Hauler Trailer	Hour	\$ 150.00		
Swamper (Laborer)	Hour	\$ 35.00		
Hydrovac	Hour	\$ 220.00		
Water per BBL	BBL	\$ 1.00	400	\$ 400.00
Solids & Liquids Disposal	BBL/CY	\$ 45.00		
Tubing Float (semi-flatbed)	Day	\$ 100.00		
Roustabout Services				
Roustabout Foreman with Truck	Hour	\$ 71.00	5	\$ 355.00
Roustabout Truck with Foreman and Trailer	Hour	\$ 96.00		
Backhoe	Hour	\$ 65.00	5	\$ 325.00
Skidsteer	Hour	\$ 45.00		
Extra Labor, Per Person	Hour	\$ 36.00		
Generator	Hour	\$ 10.00		
Mobile Steamer - Hotsy	Hour	\$ 50.00		
Welder	Hour	\$ 95.00	5	\$ 475.00
Hydrovac	Hour			
or	cost plus %	15%		
Mini excavator	Hour	\$ 55.00		
Vacuum Truck	Hour	\$ 100.00		
or	cost plus %			
Dump Truck	Hour	\$ 75.00		
Side Dump	Hour	\$ 100.00		
Hot Oil Services				
Hot Oiler	Hour	\$ 145.00		
Propane	Gal	\$ 2.35		
Contingents				
Contingent %	Percent	10.00%		\$ 1,740.00
ESTIMATED PLUGGING COST				\$ 17,400.00
ESTIMATED TOTAL COST WITH CONTINGENT				\$ 19,140.00

Gaspar 11-1

GL = 5090'
KB = 5100'
KB = 10.0'

API #: 05-001-09396-00
NWNW Sec. 1 T1S R68W 6 PM
ADAMS COUNTY, CO
CURRENT WELLBORE DIAGRAM



SURFACE CASING

12 1/4" Hole
8 5/8" 24# @ 1079'
CMT with 455 SX
TOC @ Surface

PRODUCTION STRING

2 3/8" 4.7# J-55 8RD tubing
XN Nipple
TOTAL @ 8330'

PRODUCTION CASING

7 7/8" Hole
4 1/2" 11.6# to 8591'
CMT with 270 SX 1st STG
TOC @ 7050'
CMT with 180 SX SC
Btm 5188'
TOC @ 4638'

J Sand Perfs

8359-8376'
51 Perfs ; Size .42 inches

Gaspar 11-1

API #: 05-001-09396-00

NWNW Sec. 1 T1S R68W 6 PM

ADAMS COUNTY, CO

PROPOSED WELLBORE DIAGRAM

GL = 5090'

KB = 5100'

KB = 10.0'

PROPOSED PLUG/CIBPS

10 SX plug at
@ 100' to surface

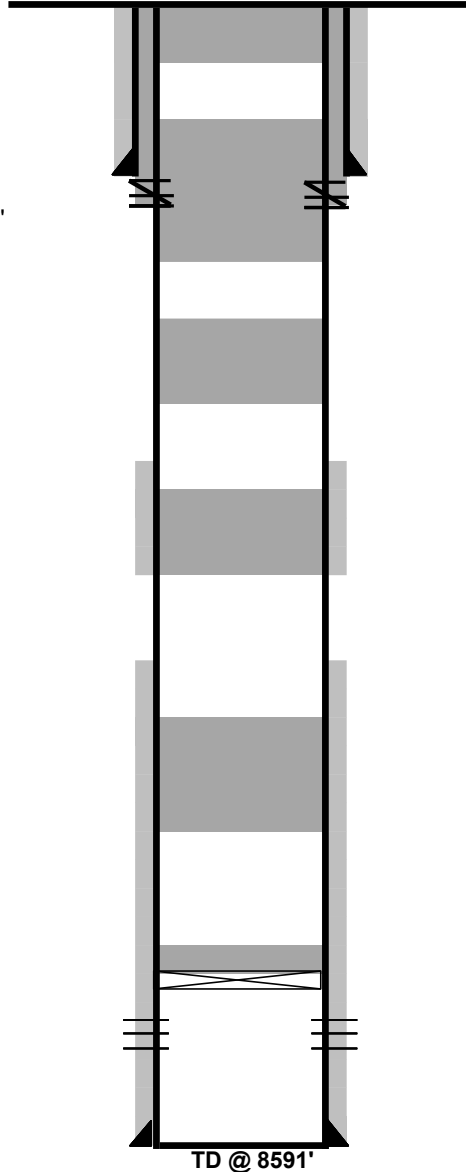
SQUEEZE PERFS AT 1129'
SQUEEZE WITH 40 SX

30 SX Plug from
1179-979

30 SX Plug from
4300-4100

30 SX Plug from
6300-6100

Proposed
CIBP @ 8359'
w 2 SX Cement on top



SURFACE CASING

12 1/4" Hole
8 5/8" 24# @ 1079'
CMT with 455 SX
TOC @ Surface

PRODUCTION STRING

2 3/8" 4.7# J-55 8RD tubing
XN Nipple
TOTAL @ 8330'

PRODUCTION CASING

7 7/8" Hole
4 1/2" 11.6# to 8591'
CMT with 270 SX 1st STG
TOC @ 7050'
CMT with 180 SX SC
Btm 5188'
TOC @ 4638'

J Sand Perfs

8359-8376'
51 Perfs ; Size .42 inches

PROCEDURE

- 1 MIRU. POOH Tubing while standing back.
- 2 RIH and Set CIBP at 7962'. Dump bail 2 SX cement on top.
- 3 PUH and shoot squeeze holes at 1580', 50' below surface shoe.
- 4 MIRU Cementers. RIH and set balanced plugs as per wellbore diagram.
- 5 Spot squeeze cement. Initiate circulation to surface.
- 6 Initiate surface squeeze. Hesitate.
- 7 Tag surface plug with sandline.
- 8 RDMO.
- 9 Place 10 SX cement and surface. Cut wellhead off 10' below ground level.
- # Begin surface reclamation.

RATES AND FEES SCHEDULE OF PRICES AND QUANTITIES COST \$ 19,140.00

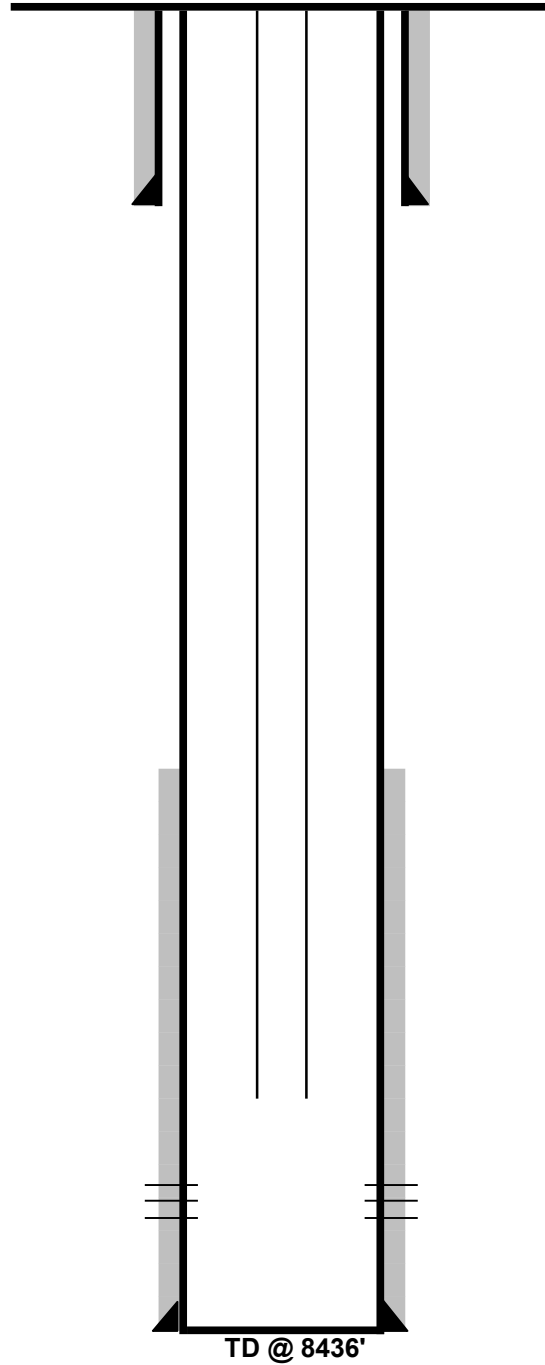
Description	Units	Quoted Price	Quantity	Total
Workover Rig Services				
Rig Charge - Operator with two person crew, Tubing Tongs, Air Slips, Swabbing tools	Hour	\$ 260.00	19	\$ 4,940.00
Extra Labor, Per Person	Hour	\$ 50.00		
Travel Time	Hour	\$ 210.00	4	\$ 840.00
Pusher	Day	\$ 750.00		
Base Beam	Day			
B.O.P.	Day	\$ 280.00	2	\$ 560.00
Wiping Rubber Tbg	well	\$ 45.00		
Wiping Rubber Rods	well	\$ 45.00		
Pump & Tank	Day	\$ 187.50	2	\$ 375.00
Power Swivel	Day	\$ 750.00		
Flange	well	\$ 40.00		
Washington Head & Rubber	Day	\$ 425.00		
Backhoe, if available	Hour	\$ 65.00		
Cement	Sack	\$ 15.00	130	\$ 1,950.00
Cement Retainer 4 1/2"	bid	\$ 673.44		
Cement Retainer 5 1/2"	bid	\$ 673.44		
Cement Retainer 7"	bid	\$ 673.44		
CIBP 4 1/2"	bid	\$ 675.00	1	\$ 675.00
CIBP 5 1/2"	bid	\$ 673.44		
CIBP 7"	bid	\$ 673.44		
Thread dope	well	\$ 50.00		
Tubing trailer	Day	\$ 100.00		
Hydrotesting 8,000'	well	\$ 1,375.00		
CBL - 8,000' to surface	well	\$ 3,000.00		
CBL - 2,000' to surface	well	\$ 1,800.00		
WL CIBP 8,000'	well	\$ 1,550.00	1	\$ 1,550.00
WL Dump Bail 2 sx	well	\$ 450.00	1	\$ 450.00
WL Squeeze hole 7,000'	well	\$ 625.00		
WL Squeeze hole 3,000'	well	\$ 750.00		
WL Squeeze hole 1,800'	well	\$ 625.00	1	\$ 625.00
or	cost plus %			
Winch Truck	Hour	\$ 135.00		
or	cost plus %			
Hydrovac	Hour			
or	cost plus %	\$ 0.15		
Disposal	BBL			
Other services - backhoe, welder, cut/cap well, skidster		\$ 1,000.00		
Wireline Set-Up	Day	\$ 1,725.00		
Cement Pumping Charge	Day	\$ 3,000.00	1	\$ 3,000.00
Frac Tank	Day	\$ 15.00		
Wireline Crew (Per Diem or Mileage)	Day	\$ 400.00		
Cement Tank	Day	\$ 200.00		
Water Hauling/Trucking				
80/100 BBL Bobtail	Hour	\$ 95.00		

80/100 BBL Bobtail Hazmat	Hour	\$ 120.00		
130/150 BBL Transport	Hour	\$ 110.00	8	\$ 880.00
130/150 BBL Transport Hazmat	Hour	\$ 135.00		
Winch Truck	Hour	\$ 115.00		
Laborer and Pickup	Hour	\$ 40.00		
Heavy Hauler Trailer	Hour	\$ 150.00		
Swamper (Laborer)	Hour	\$ 35.00		
Hydrovac	Hour	\$ 220.00		
Water per BBL	BBL	\$ 1.00	400	\$ 400.00
Solids & Liquids Disposal	BBL/CY	\$ 45.00		
Tubing Float (semi-flatbed)	Day	\$ 100.00		
Roustabout Services				
Roustabout Foreman with Truck	Hour	\$ 71.00	5	\$ 355.00
Roustabout Truck with Foreman and Trailer	Hour	\$ 96.00		
Backhoe	Hour	\$ 65.00	5	\$ 325.00
Skidsteer	Hour	\$ 45.00		
Extra Labor, Per Person	Hour	\$ 36.00		
Generator	Hour	\$ 10.00		
Mobile Steamer - Hotsy	Hour	\$ 50.00		
Welder	Hour	\$ 95.00	5	\$ 475.00
Hydrovac	Hour			
or	cost plus %	15%		
Mini excavator	Hour	\$ 55.00		
Vacuum Truck	Hour	\$ 100.00		
or	cost plus %			
Dump Truck	Hour	\$ 75.00		
Side Dump	Hour	\$ 100.00		
Hot Oil Services				
Hot Oiler	Hour	\$ 145.00		
Propane	Gal	\$ 2.35		
Contingents				
Contingent %	Percent	10.00%		\$ 1,740.00
ESTIMATED PLUGGING COST				\$ 17,400.00
ESTIMATED TOTAL COST WITH CONTINGENT				\$ 19,140.00

Guthrie 21-2

GL = 5025'
KB = 5035'
KB = 10.0'

API #: 05-001-09463-00
NENW Sec. 2 T1S R67W 6 PM
ADAMS COUNTY, CO
CURRENT WELLBORE DIAGRAM



SURFACE CASING

12 1/4" Hole
8 5/8" 24# @ 1102'
CMT with 665 SX
TOC @ Surface

PRODUCTION STRING

2 3/8" 4.7# J-55 8RD tubing
Seat Nipple Notch Collar
TOTAL @ 8048'

PRODUCTION CASING

7 7/8" Hole
4 1/2" 11.6# to 8435'
CMT with 535 SX
TOC @ 4530'

J Sand Perfs

8164-8212'
105 Perfs ; Size .42 inches

Guthrie 21-2

API #: 05-001-09463-00

NENW Sec. 2 T1S R67W 6 PM
ADAMS COUNTY, CO

PROPOSED WELLBORE DIAGRAM

GL = 5025'
KB = 5035'
KB = 10.0'

PROPOSED PLUG/CIBPS

10 SX plug at
@ 100' to surface

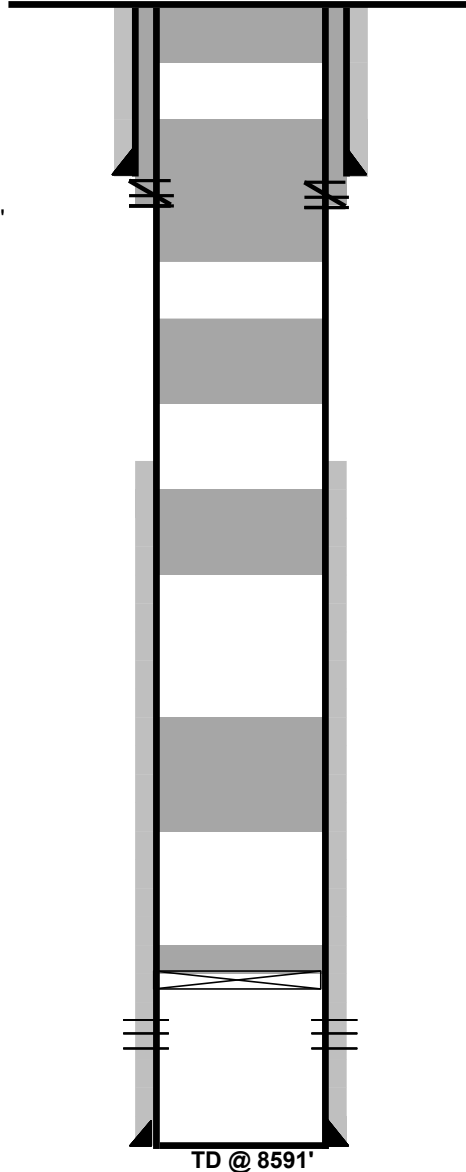
SQUEEZE PERFS AT 1152'
SQUEEZE WITH 40 SX

30 SX Plug from
1202-1002

30 SX Plug from
4300-4100

30 SX Plug from
6300-6100

Proposed
CIBP @ 8114'
w 2 SX Cement on top



SURFACE CASING

12 1/4" Hole
8 5/8" 24# @ 1102'
CMT with 665 SX
TOC @ Surface

PRODUCTION CASING

7 7/8" Hole
4 1/2" 11.6# to 8435'
CMT with 535 SX
TOC @ 4530'

J Sand Perfs

8164-8212'
105 Perfs ; Size .42 inches

PROCEDURE

- 1 MIRU. POOH Tubing while standing back.
- 2 RIH and Set CIBP as per WBD. Dump bail 2 SX cement on top.
- 3 PUH and shoot squeeze holes 50' below surface shoe.
- 4 MIRU Cementers. RIH and set balanced plugs as per wellbore diagram.
- 5 Spot squeeze cement. Initiate circulation to surface.
- 6 Initiate surface squeeze. Hesitate.
- 7 Spot last balanced plug across sqz. Tag surface plug with sandline.
- 8 RDMO.
- 9 Place 10 SX cement and surface. Cut wellhead off 10' below ground level.
- # Begin surface reclamation.

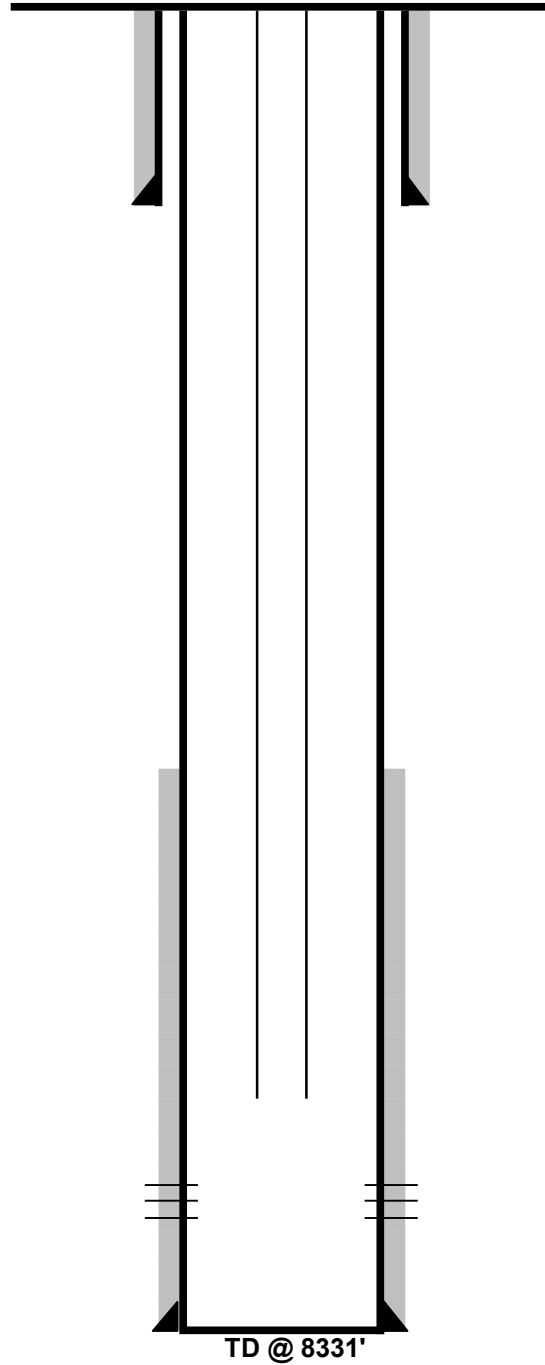
DEN OIL FIELD CLOSURE SERVICES			COST \$ 19,140.00	
Description	Units	Quoted Price	Quantity	Total
Workover Rig Services				
Rig Charge - Operator with two person crew, Tubing Tongs, Air Slips, Swabbing tools	Hour	\$ 260.00	19	\$ 4,940.00
Extra Labor, Per Person	Hour	\$ 50.00		
Travel Time	Hour	\$ 210.00	4	\$ 840.00
Pusher	Day	\$ 750.00		
Base Beam	Day			
B.O.P.	Day	\$ 280.00	2	\$ 560.00
Wiping Rubber Tbg	well	\$ 45.00		
Wiping Rubber Rods	well	\$ 45.00		
Pump & Tank	Day	\$ 187.50	2	\$ 375.00
Power Swivel	Day	\$ 750.00		
Flange	well	\$ 40.00		
Washington Head & Rubber	Day	\$ 425.00		
Backhoe, if available	Hour	\$ 65.00		
Cement	Sack	\$ 15.00	130	\$ 1,950.00
Cement Retainer 4 1/2"	bid	\$ 673.44		
Cement Retainer 5 1/2"	bid	\$ 673.44		
Cement Retainer 7"	bid	\$ 673.44		
CIBP 4 1/2"	bid	\$ 675.00	1	\$ 675.00
CIBP 5 1/2"	bid	\$ 673.44		
CIBP 7"	bid	\$ 673.44		
Thread dope	well	\$ 50.00		
Tubing trailer	Day	\$ 100.00		
Hydrotesting 8,000'	well	\$ 1,375.00		
CBL - 8,000' to surface	well	\$ 3,000.00		
CBL - 2,000' to surface	well	\$ 1,800.00		
	well	\$ 1,550.00	1	\$ 1,550.00
	well	\$ 450.00	1	\$ 450.00
WL Squeeze hole 7,000'	well	\$ 625.00		
WL Squeeze hole 3,000'	well	\$ 750.00		
WL Squeeze hole 1,800'	well	\$ 625.00	1	\$ 625.00
or	cost plus %			
Winch Truck	Hour	\$ 135.00		
or	cost plus %			
Hydrovac	Hour			
or	cost plus %	\$ 0.15		
Disposal	BBL			
Other services - backhoe, welder, cut/cap well, skidster		\$ 1,000.00		
Wireline Set-Up	Day	\$ 1,725.00		
Cement Pumping Charge	Day	\$ 3,000.00	1	\$ 3,000.00
Frac Tank	Day	\$ 15.00		
Wireline Crew (Per Diem or Mileage)	Day	\$ 400.00		
Cement Tank	Day	\$ 200.00		
Water Hauling/Trucking				
80/100 BBL Bobtail	Hour	\$ 95.00		

80/100 BBL Bobtail Hazmat	Hour	\$ 120.00		
130/150 BBL Transport	Hour	\$ 110.00	8	\$ 880.00
130/150 BBL Transport Hazmat	Hour	\$ 135.00		
Winch Truck	Hour	\$ 115.00		
Laborer and Pickup	Hour	\$ 40.00		
Heavy Hauler Trailer	Hour	\$ 150.00		
Swamper (Laborer)	Hour	\$ 35.00		
Hydrovac	Hour	\$ 220.00		
Water per BBL	BBL	\$ 1.00	400	\$ 400.00
Solids & Liquids Disposal	BBL/CY	\$ 45.00		
Tubing Float (semi-flatbed)	Day	\$ 100.00		
Roustabout Services				
Roustabout Foreman with Truck	Hour	\$ 71.00	5	\$ 355.00
Roustabout Truck with Foreman and Trailer	Hour	\$ 96.00		
Backhoe	Hour	\$ 65.00	5	\$ 325.00
Skidsteer	Hour	\$ 45.00		
Extra Labor, Per Person	Hour	\$ 36.00		
Generator	Hour	\$ 10.00		
Mobile Steamer - Hotsy	Hour	\$ 50.00		
Welder	Hour	\$ 95.00	5	\$ 475.00
Hydrovac	Hour			
or	cost plus %	15%		
Mini excavator	Hour	\$ 55.00		
Vacuum Truck	Hour	\$ 100.00		
or	cost plus %			
Dump Truck	Hour	\$ 75.00		
Side Dump	Hour	\$ 100.00		
Hot Oil Services				
Hot Oiler	Hour	\$ 145.00		
Propane	Gal	\$ 2.35		
Contingents				
Contingent %	Percent	10.00%		\$ 1,740.00
ESTIMATED PLUGGING COST				\$ 17,400.00
ESTIMATED TOTAL COST WITH CONTINGENT				\$ 19,140.00

Guthrie 31-2

GL = 5010'
KB = 5020'
KB = 10.0'

API #: 05-001-09541-00
NWNE Sec. 2 T1S R67W 6 PM
ADAMS COUNTY, CO
CURRENT WELLBORE DIAGRAM



SURFACE CASING

12 1/4" Hole
8 5/8" 36# @ 1102'
CMT with 665 SX
TOC @ Surface

PRODUCTION STRING

2 3/8" 4.7# J-55 8RD tubing
Seat Nipple Notch Collar
TOTAL @ 7987'

PRODUCTION CASING

7 7/8" Hole
4 1/2" 11.6# to 8324'
CMT with 685 SX
TOC @ 4600'

J Sand Perfs

8120-8172'
123 Perfs ; Size .42 inches

TD @ 8331'

Guthrie 31-2

API #: 05-001-09541-00

NWNE Sec. 2 T1S R67W 6 PM

ADAMS COUNTY, CO

CURRENT WELLBORE DIAGRAM

GL = 5010'

KB = 5020'

KB = 10.0'

PROPOSED PLUG/CIBPS

10 SX plug at
@ 100' to surface

SQUEEZE PERFS AT 1152'
SQUEEZE WITH 40 SX

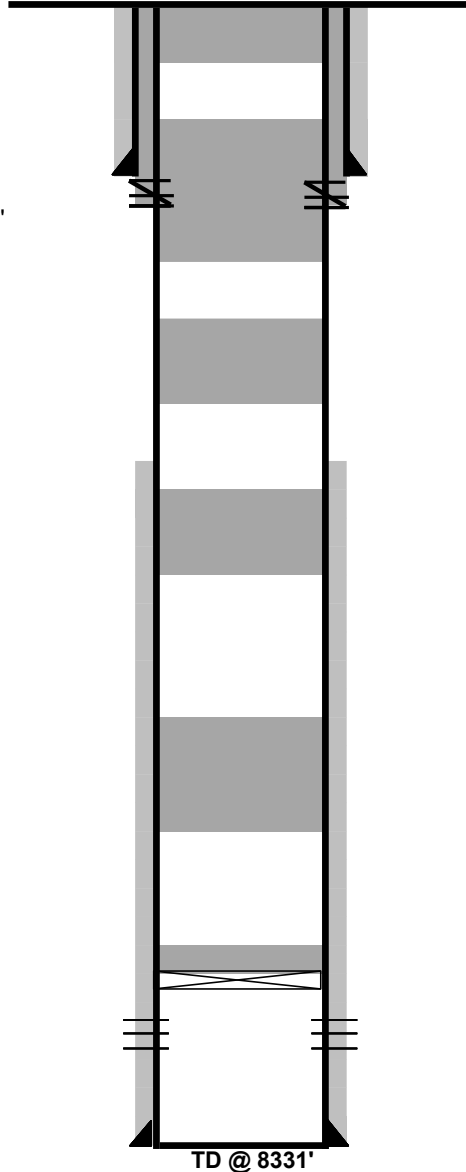
30 SX Plug from
1202-1002

30 SX Plug from
4300-4100

30 SX Plug from
6300-6100

30 SX Plug from
6300-6100

Proposed
CIBP @ 8070'
w 2 SX Cement on top



SURFACE CASING

12 1/4" Hole
8 5/8" 36# @ 1102'
CMT with 665 SX
TOC @ Surface

PRODUCTION CASING

7 7/8" Hole
4 1/2" 11.6# to 8324'
CMT with 685 SX
TOC @ 4600'

J Sand Perfs

8120-8172'
123 Perfs ; Size .42 inches

PROCEDURE

- 1 MIRU. POOH Tubing while standing back.
- 2 RIH and Set CIBP as per WBD. Dump bail 2 SX cement on top.
- 3 PUH and shoot squeeze holes 50' below surface shoe.
- 4 MIRU Cementers. RIH and set balanced plugs as per wellbore diagram.
- 5 Spot squeeze cement. Initiate circulation to surface.
- 6 Initiate surface squeeze. Hesitate.
- 7 Spot last balanced plug across sqz. Tag surface plug with sandline.
- 8 RDMO.
- 9 Place 10 SX cement and surface. Cut wellhead off 10' below ground level.
- # Begin surface reclamation.

COST \$ 19,195.00

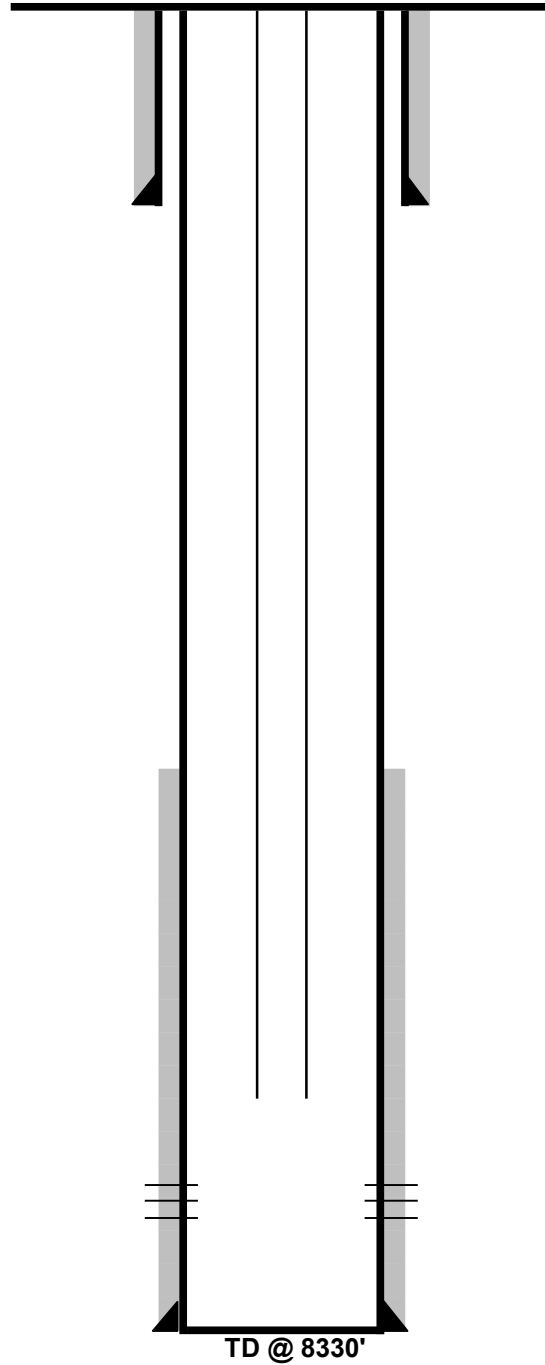
Description	Units	Quoted Price	Quantity	Total
Workover Rig Services				
Rig Charge - Operator with two person crew, Tubing Tongs, Air Slips, Swabbing tools	Hour	\$ 260.00	19	\$ 4,940.00
Extra Labor, Per Person	Hour	\$ 50.00		
Travel Time	Hour	\$ 210.00	4	\$ 840.00
Pusher	Day	\$ 750.00		
Base Beam	Day			
B.O.P.	Day	\$ 280.00	2	\$ 560.00
Wiping Rubber Tbg	well	\$ 45.00		
Wiping Rubber Rods	well	\$ 45.00		
Pump & Tank	Day	\$ 187.50	2	\$ 375.00
Power Swivel	Day	\$ 750.00		
Flange	well	\$ 40.00		
Washington Head & Rubber	Day	\$ 425.00		
Backhoe, if available	Hour	\$ 65.00		
Cement	Sack	\$ 15.00	130	\$ 1,950.00
Cement Retainer 4 1/2"	bid	\$ 673.44		
Cement Retainer 5 1/2"	bid	\$ 673.44		
Cement Retainer 7"	bid	\$ 673.44		
CIBP 4 1/2"	bid	\$ 675.00	1	\$ 675.00
CIBP 5 1/2"	bid	\$ 673.44		
CIBP 7"	bid	\$ 673.44		
Thread dope	well	\$ 50.00	1	\$ 50.00
Tubing trailer	Day	\$ 100.00		
Hydrotesting 8,000'	well	\$ 1,375.00		
CBL - 8,000' to surface	well	\$ 3,000.00		
CBL - 2,000' to surface	well	\$ 1,800.00		
WL CIBP 8,000'	well	\$ 1,550.00	1	\$ 1,550.00
WL Dump Bail 2 sx	well	\$ 450.00	1	\$ 450.00
WL Squeeze hole 7,000'	well	\$ 625.00		
WL Squeeze hole 3,000'	well	\$ 750.00		
WL Squeeze hole 1,800'	well	\$ 625.00	1	\$ 625.00
or	cost plus %			
Winch Truck	Hour	\$ 135.00		
or	cost plus %			
Hydrovac	Hour			
or	cost plus %	\$ 0.15		
Disposal	BBL			
Other services - backhoe, welder, cut/cap well, skidster		\$ 1,000.00		
Wireline Set-Up	Day	\$ 1,725.00		
Cement Pumping Charge	Day	\$ 3,000.00	1	\$ 3,000.00
Frac Tank	Day	\$ 15.00		
Wireline Crew (Per Diem or Mileage)	Day	\$ 400.00		
Cement Tank	Day	\$ 200.00		
Water Hauling/Trucking				
80/100 BBL Bobtail	Hour	\$ 95.00		

80/100 BBL Bobtail Hazmat	Hour	\$ 120.00		
130/150 BBL Transport	Hour	\$ 110.00	8	\$ 880.00
130/150 BBL Transport Hazmat	Hour	\$ 135.00		
Winch Truck	Hour	\$ 115.00		
Laborer and Pickup	Hour	\$ 40.00		
Heavy Hauler Trailer	Hour	\$ 150.00		
Swamper (Laborer)	Hour	\$ 35.00		
Hydrovac	Hour	\$ 220.00		
Water per BBL	BBL	\$ 1.00	400	\$ 400.00
Solids & Liquids Disposal	BBL/CY	\$ 45.00		
Tubing Float (semi-flatbed)	Day	\$ 100.00		
Roustabout Services				
Roustabout Foreman with Truck	Hour	\$ 71.00	5	\$ 355.00
Roustabout Truck with Foreman and Trailer	Hour	\$ 96.00		
Backhoe	Hour	\$ 65.00	5	\$ 325.00
Skidsteer	Hour	\$ 45.00		
Extra Labor, Per Person	Hour	\$ 36.00		
Generator	Hour	\$ 10.00		
Mobile Steamer - Hotsy	Hour	\$ 50.00		
Welder	Hour	\$ 95.00	5	\$ 475.00
Hydrovac	Hour			
or	cost plus %	15%		
Mini excavator	Hour	\$ 55.00		
Vacuum Truck	Hour	\$ 100.00		
or	cost plus %			
Dump Truck	Hour	\$ 75.00		
Side Dump	Hour	\$ 100.00		
Hot Oil Services				
Hot Oiler	Hour	\$ 145.00		
Propane	Gal	\$ 2.35		
Contingents				
Contingent %	Percent	10.00%		\$ 1,745.00
ESTIMATED PLUGGING COST				\$ 17,450.00
ESTIMATED TOTAL COST WITH CONTINGENT				\$ 19,195.00

Guthrie 41-2

GL = 4999'
KB = 5009'
KB = 10.0'

API #: 05-001-09540-00
NENE Sec. 2 T1S R67W 6 PM
ADAMS COUNTY, CO
CURRENT WELLBORE DIAGRAM



SURFACE CASING

12 1/4" Hole
8 5/8" 36# @ 1120'
CMT with 780 SX
TOC @ Surface

PRODUCTION STRING

2 3/8" 4.7# J-55 8RD tubing
Seat Nipple Notch Collar
TOTAL @ 8006'

PRODUCTION CASING

7 7/8" Hole
4 1/2" 11.6# to 8319'
CMT with 595 SX
TOC @ 4869'

J Sand Perfs

8150-8192'
96 Perfs ; Size .42 inches

TD @ 8330'

Guthrie 41-2

API #: 05-001-09540-00

NENE Sec. 2 T1S R67W 6 PM

ADAMS COUNTY, CO

P&A WELLBORE DIAGRAM

GL = 4999'

KB = 5009'

KB = 10.0'

PROPOSED PLUG/CIBPS

10 SX plug at
@ 100' to surface

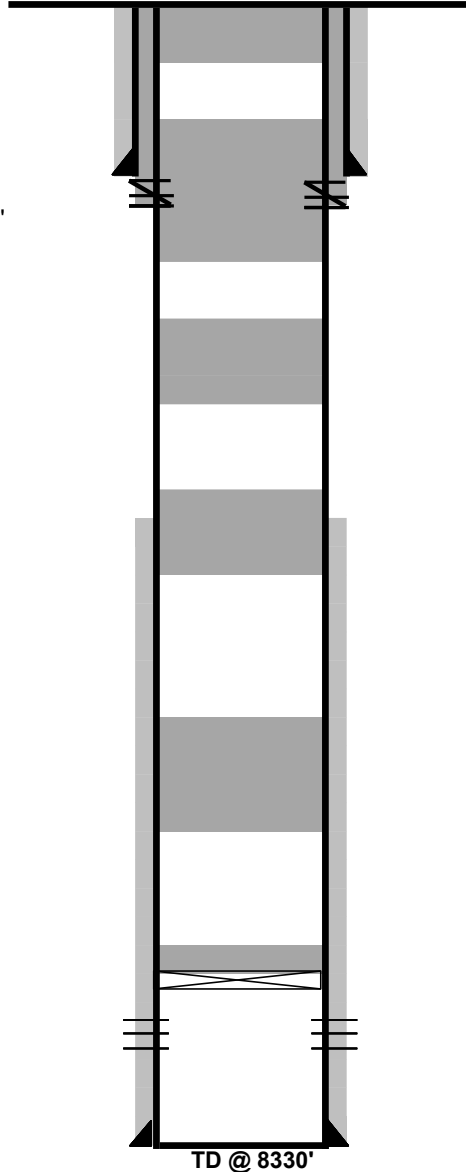
SQUEEZE PERFS AT 1170'
SQUEEZE WITH 40 SX

30 SX Plug from
1220-1020

30 SX Plug from
4919-4719

30 SX Plug from
6300-6100

Proposed
CIBP @ 8100'
w 2 SX Cement on top



SURFACE CASING

12 1/4" Hole
8 5/8" 36# @ 1120'
CMT with 780 SX
TOC @ Surface

PRODUCTION CASING

7 7/8" Hole
4 1/2" 11.6# to 8319'
CMT with 595 SX
TOC @ 4869'

J Sand Perfs

8150-8192'
96 Perfs ; Size .42 inches

PROCEDURE

- 1 MIRU. POOH Tubing while standing back.
- 2 RIH and Set CIBP as per WBD. Dump bail 2 SX cement on top.
- 3 PUH and shoot squeeze holes 50' below surface shoe.
- 4 MIRU Cementers. RIH and set balanced plugs as per wellbore diagram.
- 5 Spot squeeze cement. Initiate circulation to surface.
- 6 Initiate surface squeeze. Hesitate.
- 7 Spot last balanced plug across sqz. Tag surface plug with sandline.
- 8 RDMO.
- 9 Place 10 SX cement and surface. Cut wellhead off 10' below ground level.
- # Begin surface reclamation.

COST \$ 19,140.00

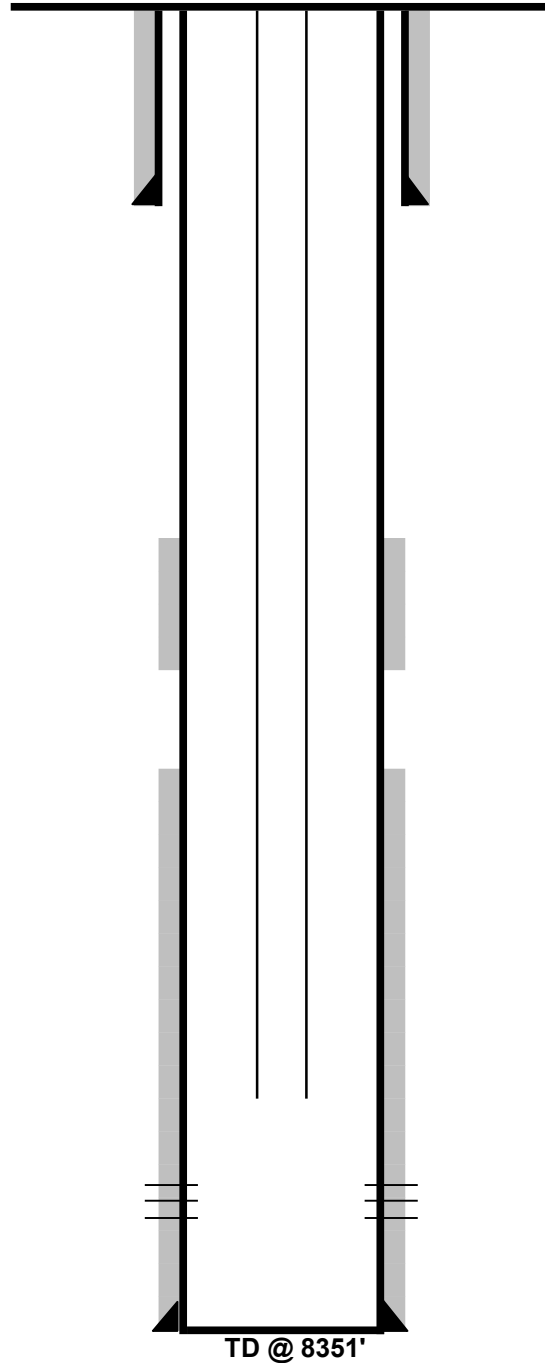
Description	Units	Quoted Price	Quantity	Total
Workover Rig Services				
Rig Charge - Operator with two person crew, Tubing Tongs, Air Slips, Swabbing tools	Hour	\$ 260.00	19	\$ 4,940.00
Extra Labor, Per Person	Hour	\$ 50.00		
Travel Time	Hour	\$ 210.00	4	\$ 840.00
Pusher	Day	\$ 750.00		
Base Beam	Day			
B.O.P.	Day	\$ 280.00	2	\$ 560.00
Wiping Rubber Tbg	well	\$ 45.00		
Wiping Rubber Rods	well	\$ 45.00		
Pump & Tank	Day	\$ 187.50	2	\$ 375.00
Power Swivel	Day	\$ 750.00		
Flange	well	\$ 40.00		
Washington Head & Rubber	Day	\$ 425.00		
Backhoe, if available	Hour	\$ 65.00		
Cement	Sack	\$ 15.00	130	\$ 1,950.00
Cement Retainer 4 1/2"	bid	\$ 673.44		
Cement Retainer 5 1/2"	bid	\$ 673.44		
Cement Retainer 7"	bid	\$ 673.44		
CIBP 4 1/2"	bid	\$ 675.00	1	\$ 675.00
CIBP 5 1/2"	bid	\$ 673.44		
CIBP 7"	bid	\$ 673.44		
Thread dope	well	\$ 50.00		
Tubing trailer	Day	\$ 100.00		
Hydrotesting 8,000'	well	\$ 1,375.00		
CBL - 8,000' to surface	well	\$ 3,000.00		
CBL - 2,000' to surface	well	\$ 1,800.00		
WL CIBP 8,000'	well	\$ 1,550.00	1	\$ 1,550.00
WL Dump Bail 2 sx	well	\$ 450.00	1	\$ 450.00
WL Squeeze hole 7,000'	well	\$ 625.00		
WL Squeeze hole 3,000'	well	\$ 750.00		
WL Squeeze hole 1,800'	well	\$ 625.00	1	\$ 625.00
or	cost plus %			
Winch Truck	Hour	\$ 135.00		
or	cost plus %			
Hydrovac	Hour			
or	cost plus %	\$ 0.15		
Disposal	BBL			
Other services - backhoe, welder, cut/cap well, skidster		\$ 1,000.00		
Wireline Set-Up	Day	\$ 1,725.00		
Cement Pumping Charge	Day	\$ 3,000.00	1	\$ 3,000.00
Frac Tank	Day	\$ 15.00		
Wireline Crew (Per Diem or Mileage)	Day	\$ 400.00		
Cement Tank	Day	\$ 200.00		
Water Hauling/Trucking				
80/100 BBL Bobtail	Hour	\$ 95.00		

80/100 BBL Bobtail Hazmat	Hour	\$ 120.00		
130/150 BBL Transport	Hour	\$ 110.00	8	\$ 880.00
130/150 BBL Transport Hazmat	Hour	\$ 135.00		
Winch Truck	Hour	\$ 115.00		
Laborer and Pickup	Hour	\$ 40.00		
Heavy Hauler Trailer	Hour	\$ 150.00		
Swamper (Laborer)	Hour	\$ 35.00		
Hydrovac	Hour	\$ 220.00		
Water per BBL	BBL	\$ 1.00	400	\$ 400.00
Solids & Liquids Disposal	BBL/CY	\$ 45.00		
Tubing Float (semi-flatbed)	Day	\$ 100.00		
Roustabout Services				
Roustabout Foreman with Truck	Hour	\$ 71.00	5	\$ 355.00
Roustabout Truck with Foreman and Trailer	Hour	\$ 96.00		
Backhoe	Hour	\$ 65.00	5	\$ 325.00
Skidsteer	Hour	\$ 45.00		
Extra Labor, Per Person	Hour	\$ 36.00		
Generator	Hour	\$ 10.00		
Mobile Steamer - Hotsy	Hour	\$ 50.00		
Welder	Hour	\$ 95.00	5	\$ 475.00
Hydrovac	Hour			
or	cost plus %	15%		
Mini excavator	Hour	\$ 55.00		
Vacuum Truck	Hour	\$ 100.00		
or	cost plus %			
Dump Truck	Hour	\$ 75.00		
Side Dump	Hour	\$ 100.00		
Hot Oil Services				
Hot Oiler	Hour	\$ 145.00		
Propane	Gal	\$ 2.35		
Contingents				
Contingent %	Percent	10.00%		\$ 1,740.00
ESTIMATED PLUGGING COST				\$ 17,400.00
ESTIMATED TOTAL COST WITH CONTINGENT				\$ 19,140.00

Guthrie 42-2

GL = 5011'
KB = 5021'
KB = 10.0'

API #: 05-001-09563-00
SENE Sec. 2 T1S R67W 6 PM
ADAMS COUNTY, CO
CURRENT WELLBORE DIAGRAM



SURFACE CASING

12 1/4" Hole
8 5/8" 36# @ 1108'
CMT with 780 SX
TOC @ Surface

PRODUCTION STRING

2 3/8" 4.7# J-55 8RD tubing
XN Nipple
TOTAL @ 7980'

PRODUCTION CASING

7 7/8" Hole
4 1/2" 11.6# to 8311'
CMT with 280 SX 1st STG
TOC @ 6790'
CMT with 180 SX SC
Btm 5388'
TOC @ 4590'

J Sand Perfs

8172-8216'
120 Perfs ; Size .42 inches

Guthrie 42-2

API #: 05-001-09563-00

SENE Sec. 2 T1S R67W 6 PM

ADAMS COUNTY, CO

CURRENT WELLBORE DIAGRAM

GL = 5011'
KB = 5021'
KB = 10.0'

PROPOSED PLUG/CIBPS

10 SX plug at
@ 100' to surface

SQUEEZE PERFS AT 1170'
SQUEEZE WITH 40 SX

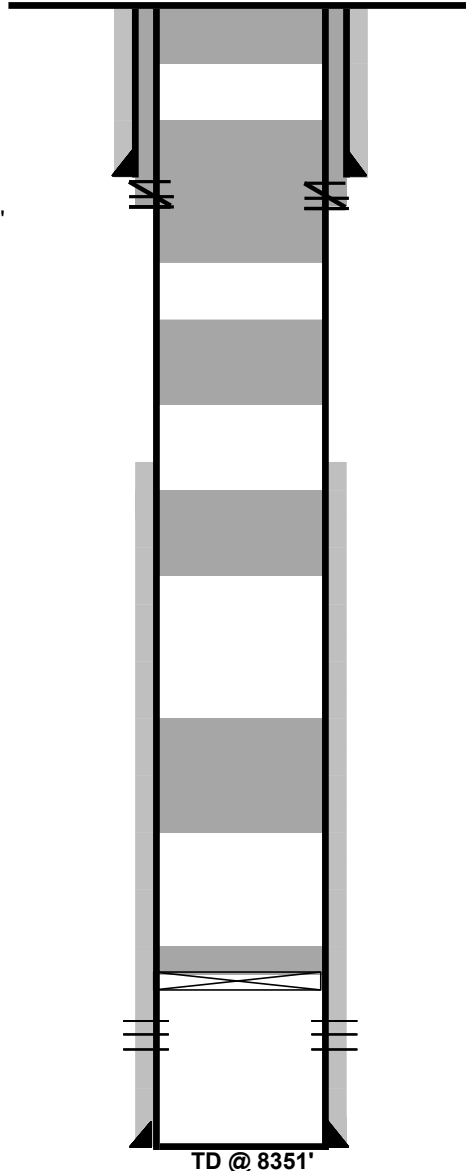
30 SX Plug from
1220-1020

30 SX Plug from
4300-4100

30 SX Plug from
6300-6100

30 SX Plug from
6300-6100

Proposed
CIBP @ 8132'
w 2 SX Cement on top



SURFACE CASING

12 1/4" Hole
8 5/8" 36# @ 1108'
CMT with 780 SX
TOC @ Surface

PRODUCTION CASING

7 7/8" Hole
4 1/2" 11.6# to 8311'
CMT with 280 SX 1st STG
TOC @ 6790'
CMT with 180 SX SC
Btm 5388'
TOC @ 4590'

J Sand Perfs

8172-8216'
120 Perfs ; Size .42 inches

PROCEDURE

- 1 MIRU. POOH Tubing while standing back.
- 2 RIH and Set CIBP as per WBD. Dump bail 2 SX cement on top.
- 3 PUH and shoot squeeze holes 50' below surface shoe.
- 4 MIRU Cementers. RIH and set balanced plugs as per wellbore diagram.
- 5 Spot squeeze cement. Initiate circulation to surface.
- 6 Initiate surface squeeze. Hesitate.
- 7 Spot last balanced plug across sqz. Tag surface plug with sandline.
- 8 RDMO.
- 9 Place 10 SX cement and surface. Cut wellhead off 10' below ground level.
- # Begin surface reclamation.

COST \$ 19,140.00

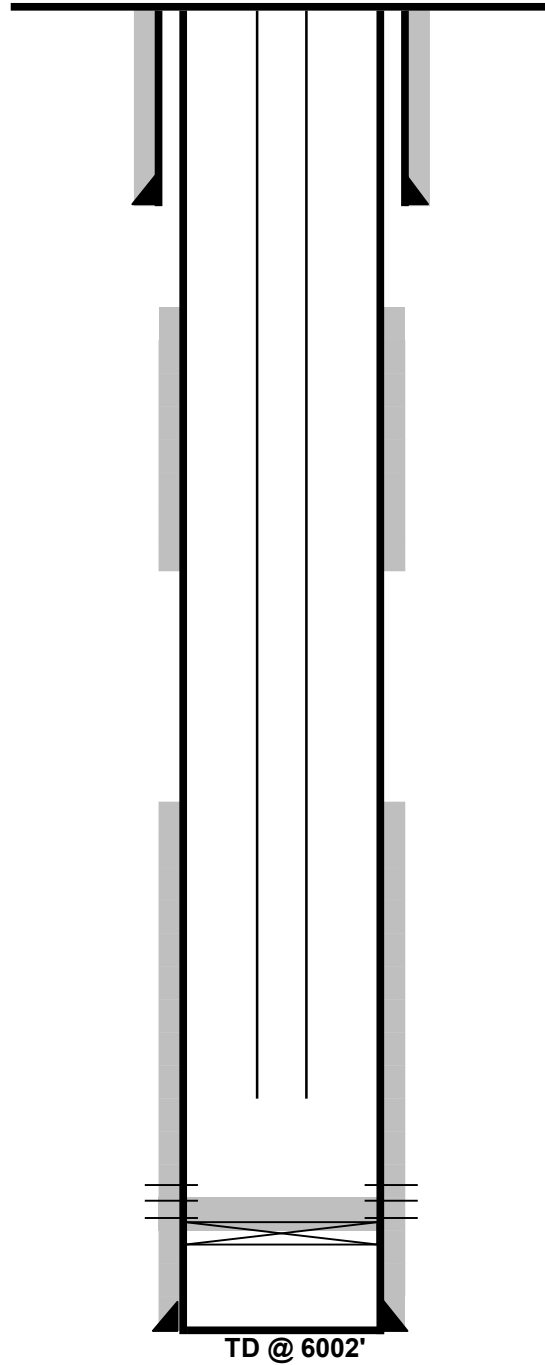
Description	Units	Quoted Price	Quantity	Total
Workover Rig Services				
Rig Charge - Operator with two person crew, Tubing Tongs, Air Slips, Swabbing tools	Hour	\$ 260.00	19	\$ 4,940.00
Extra Labor, Per Person	Hour	\$ 50.00		
Travel Time	Hour	\$ 210.00	4	\$ 840.00
Pusher	Day	\$ 750.00		
Base Beam	Day			
B.O.P.	Day	\$ 280.00	2	\$ 560.00
Wiping Rubber Tbg	well	\$ 45.00		
Wiping Rubber Rods	well	\$ 45.00		
Pump & Tank	Day	\$ 187.50	2	\$ 375.00
Power Swivel	Day	\$ 750.00		
Flange	well	\$ 40.00		
Washington Head & Rubber	Day	\$ 425.00		
Backhoe, if available	Hour	\$ 65.00		
Cement	Sack	\$ 15.00	130	\$ 1,950.00
Cement Retainer 4 1/2"	bid	\$ 673.44		
Cement Retainer 5 1/2"	bid	\$ 673.44		
Cement Retainer 7"	bid	\$ 673.44		
CIBP 4 1/2"	bid	\$ 675.00	1	\$ 675.00
CIBP 5 1/2"	bid	\$ 673.44		
CIBP 7"	bid	\$ 673.44		
Thread dope	well	\$ 50.00		
Tubing trailer	Day	\$ 100.00		
Hydrotesting 8,000'	well	\$ 1,375.00		
CBL - 8,000' to surface	well	\$ 3,000.00		
CBL - 2,000' to surface	well	\$ 1,800.00		
WL CIBP 8,000'	well	\$ 1,550.00	1	\$ 1,550.00
WL Dump Bail 2 sx	well	\$ 450.00	1	\$ 450.00
WL Squeeze hole 7,000'	well	\$ 625.00		
WL Squeeze hole 3,000'	well	\$ 750.00		
WL Squeeze hole 1,800'	well	\$ 625.00	1	\$ 625.00
or	cost plus %			
Winch Truck	Hour	\$ 135.00		
or	cost plus %			
Hydrovac	Hour			
or	cost plus %	\$ 0.15		
Disposal	BBL			
Other services - backhoe, welder, cut/cap well, skidster		\$ 1,000.00		
Wireline Set-Up	Day	\$ 1,725.00		
Cement Pumping Charge	Day	\$ 3,000.00	1	\$ 3,000.00
Frac Tank	Day	\$ 15.00		
Wireline Crew (Per Diem or Mileage)	Day	\$ 400.00		
Cement Tank	Day	\$ 200.00		
Water Hauling/Trucking				
80/100 BBL Bobtail	Hour	\$ 95.00		

80/100 BBL Bobtail Hazmat	Hour	\$ 120.00		
130/150 BBL Transport	Hour	\$ 110.00	8	\$ 880.00
130/150 BBL Transport Hazmat	Hour	\$ 135.00		
Winch Truck	Hour	\$ 115.00		
Laborer and Pickup	Hour	\$ 40.00		
Heavy Hauler Trailer	Hour	\$ 150.00		
Swamper (Laborer)	Hour	\$ 35.00		
Hydrovac	Hour	\$ 220.00		
Water per BBL	BBL	\$ 1.00	400	\$ 400.00
Solids & Liquids Disposal	BBL/CY	\$ 45.00		
Tubing Float (semi-flatbed)	Day	\$ 100.00		
Roustabout Services				
Roustabout Foreman with Truck	Hour	\$ 71.00	5	\$ 355.00
Roustabout Truck with Foreman and Trailer	Hour	\$ 96.00		
Backhoe	Hour	\$ 65.00	5	\$ 325.00
Skidsteer	Hour	\$ 45.00		
Extra Labor, Per Person	Hour	\$ 36.00		
Generator	Hour	\$ 10.00		
Mobile Steamer - Hotsy	Hour	\$ 50.00		
Welder	Hour	\$ 95.00	5	\$ 475.00
Hydrovac	Hour			
or	cost plus %	15%		
Mini excavator	Hour	\$ 55.00		
Vacuum Truck	Hour	\$ 100.00		
or	cost plus %			
Dump Truck	Hour	\$ 75.00		
Side Dump	Hour	\$ 100.00		
Hot Oil Services				
Hot Oiler	Hour	\$ 145.00		
Propane	Gal	\$ 2.35		
Contingents				
Contingent %	Percent	10.00%		\$ 1,740.00
ESTIMATED PLUGGING COST				\$ 17,400.00
ESTIMATED TOTAL COST WITH CONTINGENT				\$ 19,140.00

House 24-7 #1

GL = 4915'
KB = 4925'
KB = 10.0'

API #: 05-017-07483-00
SESW Sec. 7 T12S R50W 6 PM
CHEYENNE COUNTY, CO
CURRENT WELLBORE DIAGRAM



SURFACE CASING

12 1/4" Hole
8 5/8" 36# @ 521'
CMT with 310 SX
TOC @ Surface

PRODUCTION STRING

2 3/8" 4.7# J-55 8RD tubing
XN profile nipple
TOTAL @ 5848'

PRODUCTION CASING

7 7/8" Hole
4 1/2" 11.6# to 6002'
CMT with 200 SX 1ST STAGE
TOC @ 5060'
AND 525 SX 2ND STAGE
From DV tool at 4156'
TOC @ 1650'

Cherokee Perfs

5847-5882'
24 Perfs ; Size .38 inches
cibp at

TD @ 6002'

House 24-7 #1

API #: 05-017-07483-00

SESW Sec. 7 T12S R50W 6 PM

CHEYENNE COUNTY, CO

P&A WELLBORE DIAGRAM

GL = 4915'
KB = 4925'
KB = 10.0'

PROPOSED PLUG/CIBPS

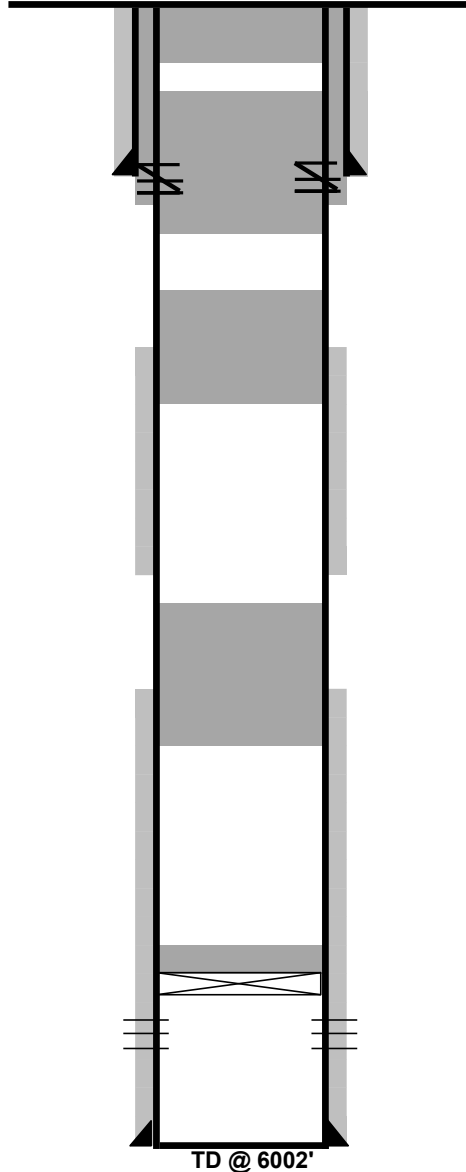
10 SX Cement from
100' to Surface

SQZ Perfs at 571'
SQZ WITH 40 SX
30 SX Plug at
621-421

30 SX Plug at
1700-1500

30 SX Plug at
5110-4910

Proposed
CIBP @ 5797
2 sx cement on top



SURFACE CASING

12 1/4" Hole
8 5/8" 36# @ 521'
CMT with 310 SX
TOC @ Surface

PRODUCTION STRING

2 3/8" 4.7# J-55 8RD tubing
XN profile nipple
TOTAL @ 5848'

PRODUCTION CASING

7 7/8" Hole
4 1/2" 11.6# to 6002'
CMT with 200 SX 1ST STAGE
TOC @ 5060'
AND 525 SX 2ND STAGE
From DV tool at 4156'
TOC @ 1650'

Cherokee Perfs

5847-5882'
24 Perfs ; Size .38 inches

PROCEDURE

- 1 MIRU. POOH Tubing while standing back.
- 2 RIH and Set CIBP as per WBD. Dump bail 2 SX cement on top.
- 3 PUH and shoot squeeze holes 50' below surface shoe.
- 4 MIRU Cementers. RIH and set balanced plugs as per wellbore diagram.
- 5 Spot squeeze cement. Initiate circulator to surface.
- 6 Initiate surface squeeze. Hesitate.
- 7 Spot last balanced plug across sqz. Tag surface plug with sandline.
- 8 RDMO.
- 9 Place 10 SX cement and surface. Cut wellhead off 10' below ground level.
- # Begin surface reclamation.

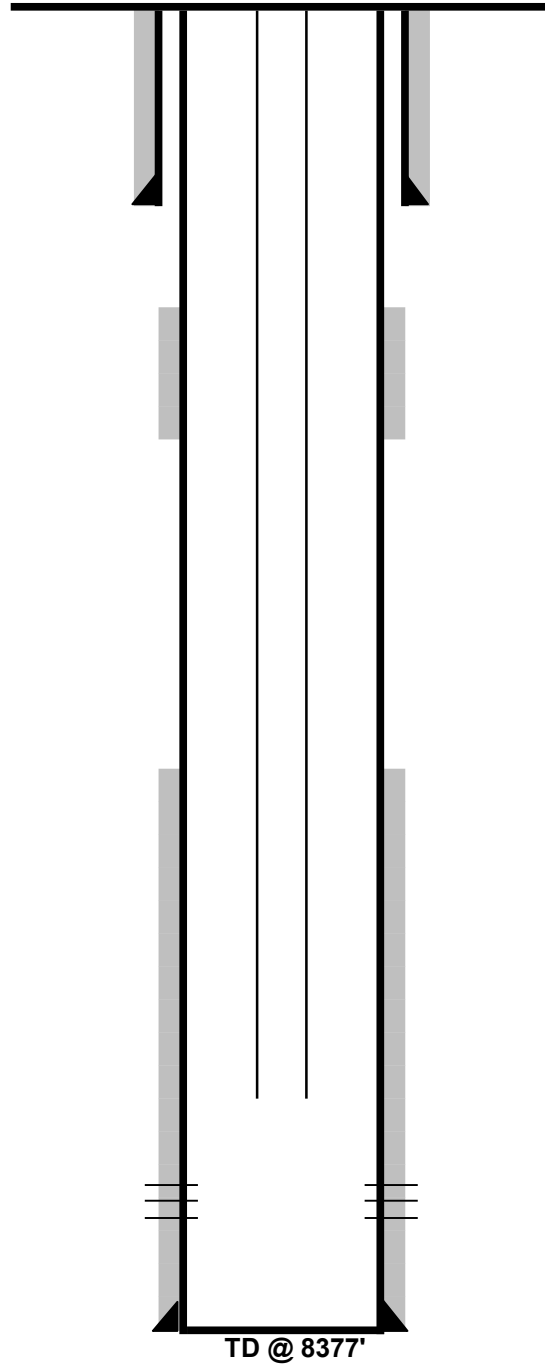
DEN OIL FIELD CLOSURE SERVICES			COST \$ 17,814.50	
Description	Units	Quoted Price	Quantity	Total
Workover Rig Services				
Rig Charge - Operator with two person crew, Tubing Tongs, Air Slips, Swabbing tools	Hour	\$ 260.00	19	\$ 4,940.00
Extra Labor, Per Person	Hour	\$ 50.00		
Travel Time	Hour	\$ 210.00	4	\$ 840.00
Pusher	Day	\$ 750.00		
Base Beam	Day			
B.O.P.	Day	\$ 280.00	1	\$ 280.00
Wiping Rubber Tbg	well	\$ 45.00		
Wiping Rubber Rods	well	\$ 45.00		
Pump & Tank	Day	\$ 187.50		
Power Swivel	Day	\$ 750.00		
Flange	well	\$ 40.00		
Washington Head & Rubber	Day	\$ 425.00		
Backhoe, if available	Hour	\$ 65.00		
Cement	Sack	\$ 15.00	90	\$ 1,350.00
Cement Retainer 4 1/2"	bid	\$ 673.44		
Cement Retainer 5 1/2"	bid	\$ 673.44		
Cement Retainer 7"	bid	\$ 673.44		
CIBP 4 1/2"	bid	\$ 675.00	1	\$ 675.00
CIBP 5 1/2"	bid	\$ 673.44		
CIBP 7"	bid	\$ 673.44		
Thread dope	well	\$ 50.00	1	\$ 50.00
Tubing trailer	Day	\$ 100.00		
Hydrotesting 8,000'	well	\$ 1,375.00		
CBL - 8,000' to surface	well	\$ 3,000.00		
CBL - 2,000' to surface	well	\$ 1,800.00		
WL CIBP 8,000'	well	\$ 1,550.00	1	\$ 1,550.00
WL Dump Bail 2 sx	well	\$ 450.00	1	\$ 450.00
WL Squeeze hole 7,000'	well	\$ 625.00		
WL Squeeze hole 3,000'	well	\$ 750.00		
WL Squeeze hole 1,800'	well	\$ 625.00	1	\$ 625.00
or	cost plus %			
Winch Truck	Hour	\$ 135.00		
or	cost plus %			
Hydrovac	Hour			
or	cost plus %	\$ 0.15		
Disposal	BBL			
Other services - backhoe, welder, cut/cap well, skidster		\$ 1,000.00		
Wireline Set-Up	Day	\$ 1,725.00		
Cement Pumping Charge	Day	\$ 3,000.00	1	\$ 3,000.00
Frac Tank	Day	\$ 15.00		
Wireline Crew (Per Diem or Mileage)	Day	\$ 400.00		
Cement Tank	Day	\$ 200.00		
Water Hauling/Trucking				
80/100 BBL Bobtail	Hour	\$ 95.00		

80/100 BBL Bobtail Hazmat	Hour	\$ 120.00		
130/150 BBL Transport	Hour	\$ 110.00	8	\$ 880.00
130/150 BBL Transport Hazmat	Hour	\$ 135.00		
Winch Truck	Hour	\$ 115.00		
Laborer and Pickup	Hour	\$ 40.00		
Heavy Hauler Trailer	Hour	\$ 150.00		
Swamper (Laborer)	Hour	\$ 35.00		
Hydrovac	Hour	\$ 220.00		
Water per BBL	BBL	\$ 1.00	400	\$ 400.00
Solids & Liquids Disposal	BBL/CY	\$ 45.00		
Tubing Float (semi-flatbed)	Day	\$ 100.00		
Roustabout Services				
Roustabout Foreman with Truck	Hour	\$ 71.00	5	\$ 355.00
Roustabout Truck with Foreman and Trailer	Hour	\$ 96.00		
Backhoe	Hour	\$ 65.00	5	\$ 325.00
Skidsteer	Hour	\$ 45.00		
Extra Labor, Per Person	Hour	\$ 36.00		
Generator	Hour	\$ 10.00		
Mobile Steamer - Hotsy	Hour	\$ 50.00		
Welder	Hour	\$ 95.00	5	\$ 475.00
Hydrovac	Hour			
or	cost plus %	15%		
Mini excavator	Hour	\$ 55.00		
Vacuum Truck	Hour	\$ 100.00		
or	cost plus %			
Dump Truck	Hour	\$ 75.00		
Side Dump	Hour	\$ 100.00		
Hot Oil Services				
Hot Oiler	Hour	\$ 145.00		
Propane	Gal	\$ 2.35		
Contingents				
Contingent %	Percent	10.00%		\$ 1,619.50
ESTIMATED PLUGGING COST				\$ 16,195.00
ESTIMATED TOTAL COST WITH CONTINGENT				\$ 17,814.50

L. W. Moore Gas Unit #1

GL = 5062'
KB = 5068'
KB = 6.0'

API #: 05-001-07074-00
NENE Sec. 10 T1S R67W 6 PM
ADAMS COUNTY, CO
CURRENT WELLBORE DIAGRAM



SURFACE CASING

12 1/4" Hole
8 5/8" 24# @ 232'
CMT with 225 SX
TOC @ Surface

PRODUCTION STRING

2 3/8" 4.7# J-55 8RD tubing
XN Nipple
TOTAL @ 8328'

PRODUCTION CASING

7 7/8" Hole
4 1/2" 10.5# to 8377'
CMT with 350 SX
TOC @ 6990'
CMT with 350 SX at 1036' DV Tool
TOC @ 416'

J Sand Perfs

8264-8275'
18 Perfs ; Size .42 inches

L. W. Moore Gas Unit #1

API #: 05-001-07074-00

NENE Sec. 10 T1S R67W 6 PM

ADAMS COUNTY, CO

P&A WELLBORE DIAGRAM

GL = 5062'

KB = 5068'

KB = 6.0'

PROPOSED PLUG/CIBPS

10 SX plug at
@ 100' to surface

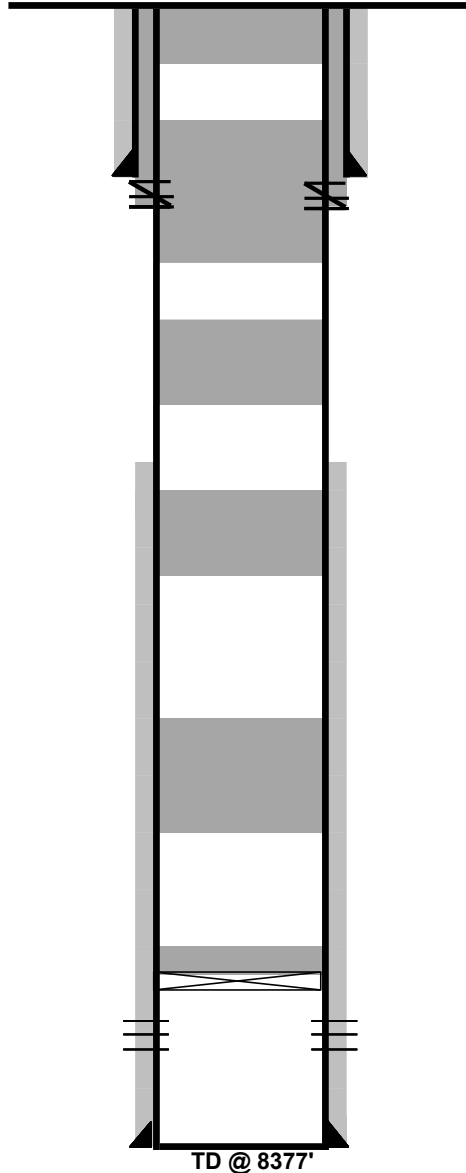
SQUEEZE PERFS AT 282'
SQUEEZE WITH 40 SX

30 SX Plug from
332-132

30 SX Plug from
4300-4100

30 SX Plug from
6300-6100

Proposed
CIBP @ 8214'
w 2 SX Cement on top



SURFACE CASING

12 1/4" Hole
8 5/8" 24# @ 232'
CMT with 225 SX
TOC @ Surface

PRODUCTION CASING

7 7/8" Hole
4 1/2" 10.5# to 8377'
CMT with 350 SX
TOC @ 6990'
CMT with 350 SX at 1036' DV Tool
TOC @ 416'

J Sand Perfs

8264-8275'
18 Perfs ; Size .42 inches

PROCEDURE

- 1 MIRU. POOH Tubing while standing back.
- 2 RIH and Set CIBP as per WBD. Dump bail 2 SX cement on top.
- 3 PUH and shoot squeeze holes 50' below surface shoe.
- 4 MIRU Cementers. RIH and set balanced plugs as per wellbore diagram.
- 5 Spot squeeze cement. Initiate circulation to surface.
- 6 Initiate surface squeeze. Hesitate.
- 7 Spot last balanced plug across sqz. Tag surface plug with sandline.
- 8 RDMO.
- 9 Place 10 SX cement and surface. Cut wellhead off 10' below ground level.
- # Begin surface reclamation.

RATES AND FEES SCHEDULE OF PRICES AND QUANTITIES COST \$ 19,195.00

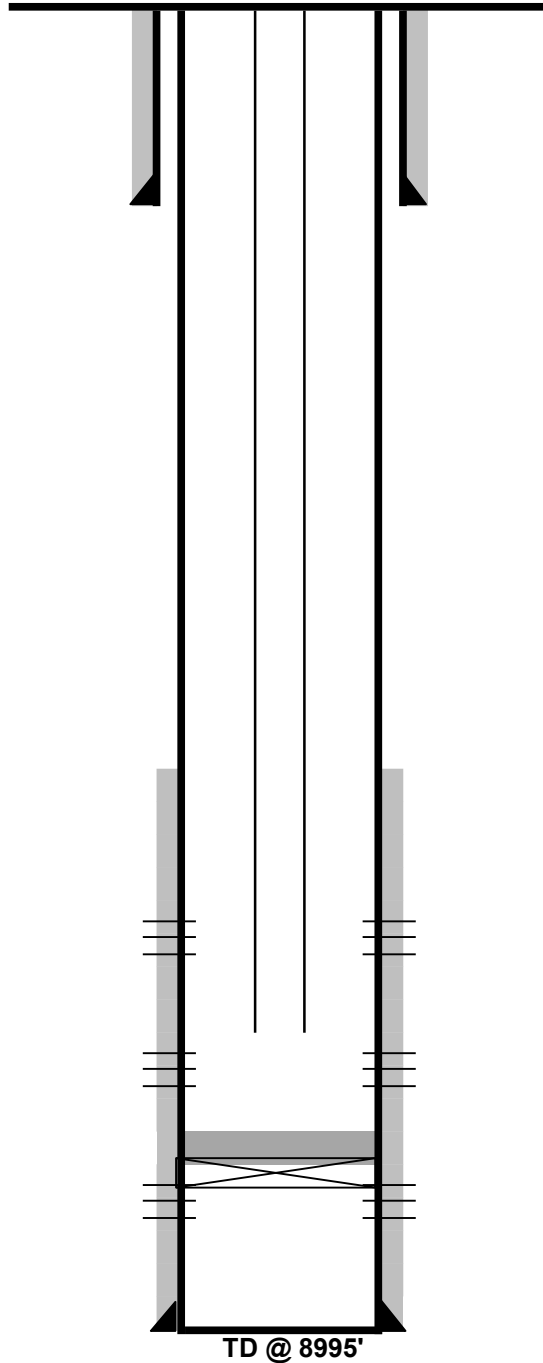
Description	Units	Quoted Price	Quantity	Total
Workover Rig Services				
Rig Charge - Operator with two person crew, Tubing Tongs, Air Slips, Swabbing tools	Hour	\$ 260.00	19	\$ 4,940.00
Extra Labor, Per Person	Hour	\$ 50.00		
Travel Time	Hour	\$ 210.00	4	\$ 840.00
Pusher	Day	\$ 750.00		
Base Beam	Day			
B.O.P.	Day	\$ 280.00	2	\$ 560.00
Wiping Rubber Tbg	well	\$ 45.00		
Wiping Rubber Rods	well	\$ 45.00		
Pump & Tank	Day	\$ 187.50	2	\$ 375.00
Power Swivel	Day	\$ 750.00		
Flange	well	\$ 40.00		
Washington Head & Rubber	Day	\$ 425.00		
Backhoe, if available	Hour	\$ 65.00		
Cement	Sack	\$ 15.00	130	\$ 1,950.00
Cement Retainer 4 1/2"	bid	\$ 673.44		
Cement Retainer 5 1/2"	bid	\$ 673.44		
Cement Retainer 7"	bid	\$ 673.44		
CIBP 4 1/2"	bid	\$ 675.00	1	\$ 675.00
CIBP 5 1/2"	bid	\$ 673.44		
CIBP 7"	bid	\$ 673.44		
Thread dope	well	\$ 50.00	1	\$ 50.00
Tubing trailer	Day	\$ 100.00		
Hydrotesting 8,000'	well	\$ 1,375.00		
CBL - 8,000' to surface	well	\$ 3,000.00		
CBL - 2,000' to surface	well	\$ 1,800.00		
WL CIBP 8,000'	well	\$ 1,550.00	1	\$ 1,550.00
WL Dump Bail 2 sx	well	\$ 450.00	1	\$ 450.00
WL Squeeze hole 7,000'	well	\$ 625.00		
WL Squeeze hole 3,000'	well	\$ 750.00		
WL Squeeze hole 1,800'	well	\$ 625.00	1	\$ 625.00
or	cost plus %			
Winch Truck	Hour	\$ 135.00		
or	cost plus %			
Hydrovac	Hour			
or	cost plus %	\$ 0.15		
Disposal	BBL			
Other services - backhoe, welder, cut/cap well, skidster		\$ 1,000.00		
Wireline Set-Up	Day	\$ 1,725.00		
Cement Pumping Charge	Day	\$ 3,000.00	1	\$ 3,000.00
Frac Tank	Day	\$ 15.00		
Wireline Crew (Per Diem or Mileage)	Day	\$ 400.00		
Cement Tank	Day	\$ 200.00		
Water Hauling/Trucking				
80/100 BBL Bobtail	Hour	\$ 95.00		

80/100 BBL Bobtail Hazmat	Hour	\$ 120.00		
130/150 BBL Transport	Hour	\$ 110.00	8	\$ 880.00
130/150 BBL Transport Hazmat	Hour	\$ 135.00		
Winch Truck	Hour	\$ 115.00		
Laborer and Pickup	Hour	\$ 40.00		
Heavy Hauler Trailer	Hour	\$ 150.00		
Swamper (Laborer)	Hour	\$ 35.00		
Hydrovac	Hour	\$ 220.00		
Water per BBL	BBL	\$ 1.00	400	\$ 400.00
Solids & Liquids Disposal	BBL/CY	\$ 45.00		
Tubing Float (semi-flatbed)	Day	\$ 100.00		
Roustabout Services				
Roustabout Foreman with Truck	Hour	\$ 71.00	5	\$ 355.00
Roustabout Truck with Foreman and Trailer	Hour	\$ 96.00		
Backhoe	Hour	\$ 65.00	5	\$ 325.00
Skidsteer	Hour	\$ 45.00		
Extra Labor, Per Person	Hour	\$ 36.00		
Generator	Hour	\$ 10.00		
Mobile Steamer - Hotsy	Hour	\$ 50.00		
Welder	Hour	\$ 95.00	5	\$ 475.00
Hydrovac	Hour			
or	cost plus %	15%		
Mini excavator	Hour	\$ 55.00		
Vacuum Truck	Hour	\$ 100.00		
or	cost plus %			
Dump Truck	Hour	\$ 75.00		
Side Dump	Hour	\$ 100.00		
Hot Oil Services				
Hot Oiler	Hour	\$ 145.00		
Propane	Gal	\$ 2.35		
Contingents				
Contingent %	Percent	10.00%		\$ 1,745.00
ESTIMATED PLUGGING COST				\$ 17,450.00
ESTIMATED TOTAL COST WITH CONTINGENT				\$ 19,195.00

Ruby 2

GL = 5147'
KB = 5157'
KB = 10.0'

API #: 05-001-09529-00
SWSE Sec. 12 T1S R68W 6 PM
ADAMS COUNTY, CO
P&A WELLBORE DIAGRAM



SURFACE CASING

12 1/4" Hole
8 5/8" 24# @ 1154'
CMT with 700 SX
TOC @ Surface

PRODUCTION STRING

2 3/8" 4.7# J-55 8RD tubing
Seat Nipple Notch Collar
TOTAL @ 8584'

PRODUCTION CASING

7 7/8" Hole
4 1/2" 11.6# to 8968'
CMT with 585 SX
TOC @ 3730'

Codell Perfs

8192-8208'
64 Perfs ; Size .38 inches

J-Sand Perfs

8642-8654'
48 Perfs ; Size .38 inches

Dakota Sand Perfs

8796-9920'
96 Perfs ; Size .42 inches

TD @ 8995'

Ruby 2

GL = 5147'
 KB = 5157'
 KB = 10.0'

API #: 05-001-09529-00
 SWSE Sec. 12 T1S R68W 6 PM
 ADAMS COUNTY, CO
 P&A WELLBORE DIAGRAM

PROPOSED PLUG/CIBPS

10 SX plug at
 @ 100' to surface

SQUEEZE PERFS AT 1204'
 SQUEEZE WITH 40 SX

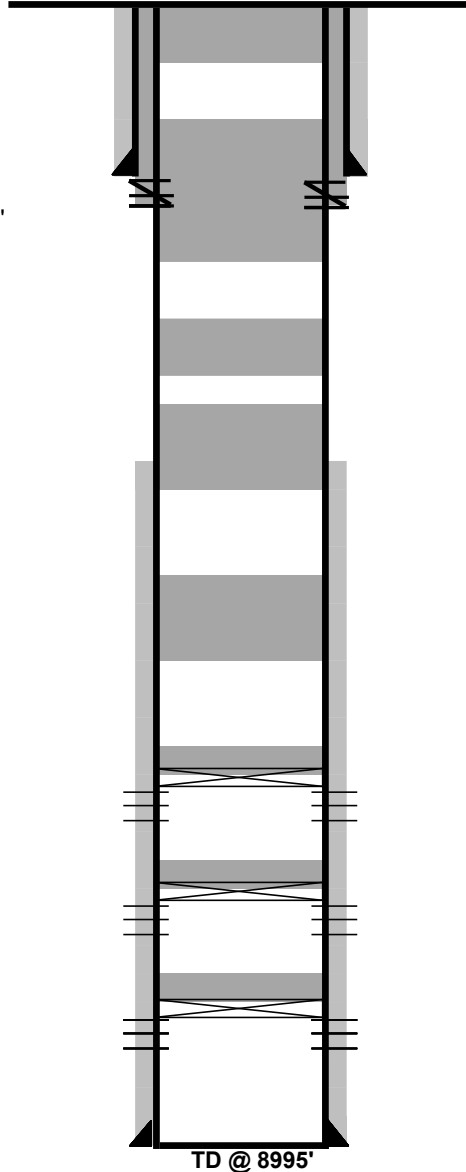
30 SX Plug from
 1254-1054

30 SX Plug from
 4300-4100

30 SX Plug from
 6100-5900

Proposed
CIBP @ 8142'
 w 2 SX Cement on top

Proposed
CIBP @ 8770'
 w 2 SX Cement on top



SURFACE CASING

12 1/4" Hole
 8 5/8" 24# @ 1154'
 CMT with 700 SX
 TOC @ Surface

PRODUCTION STRING

2 3/8" 4.7# J-55 8RD tubing
 Seat Nipple Notch Collar
 TOTAL @ 8584'

PRODUCTION CASING

7 7/8" Hole
 4 1/2" 11.6# to 8968'
 CMT with 585 SX
 TOC @ 3730'

Codell Perfs

8192-8208'
 64 Perfs ; Size .38 inches

J-Sand Perfs

8642-8654'
 48 Perfs ; Size .38 inches
CIBP @ 8770'
 w 2 SX Cement on top

Dakota Sand Perfs

8796-9920'
 96 Perfs ; Size .42 inches

PROCEDURE

- 1 MIRU. POOH Tubing while standing back.
- 2 RIH and Set CIBPs as per WBD. Dump bail 2 SX cement on top.
- 3 PUH and shoot squeeze holes 50' below surface shoe.
- 4 MIRU Cementers. RIH and set balanced plugs as per wellbore diagram.
- 5 Spot squeeze cement. Initiate circulation to surface.
- 6 Initiate surface squeeze. Hesitate.
- 7 Spot last balanced plug across sqz. Tag surface plug with sandline.
- 8 RDMO.
- 9 Place 10 SX cement and surface. Cut wellhead off 10' below ground level.
- # Begin surface reclamation.

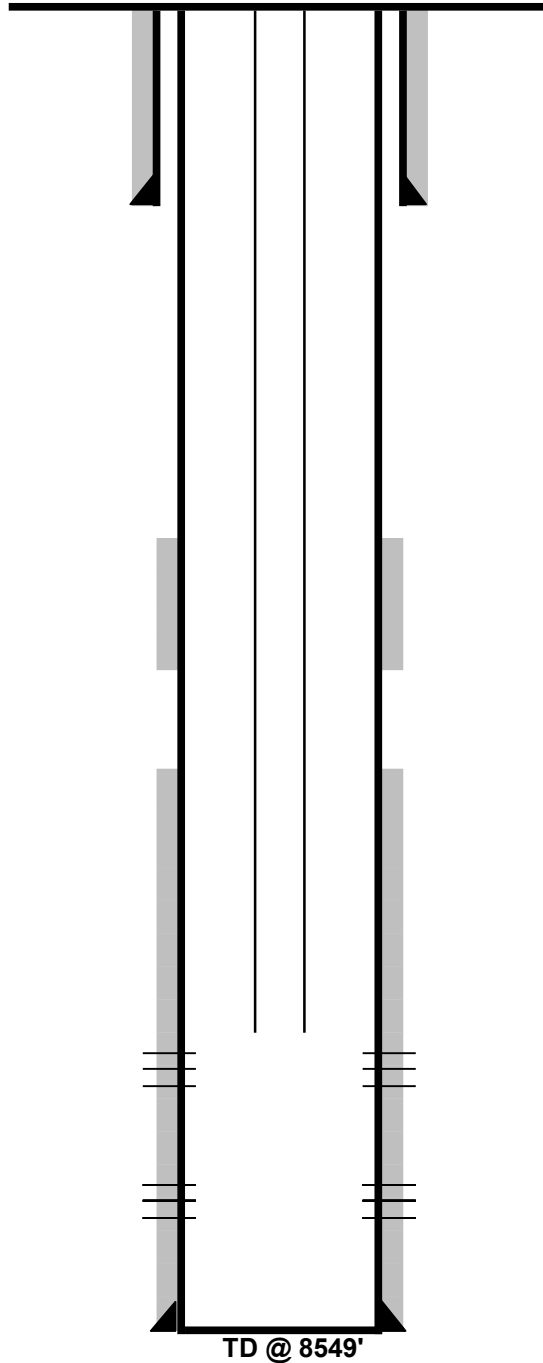
RATES AND FEES SCHEDULE OF PRICES AND QUANTITIES			COST	\$ 20,597.50
Description	Units	Quoted Price	Quantity	Total
Workover Rig Services				
Rig Charge - Operator with two person crew, Tubing Tongs, Air Slips, Swabbing tools	Hour	\$ 260.00	19	\$ 4,940.00
Extra Labor, Per Person	Hour	\$ 50.00		
Travel Time	Hour	\$ 210.00	4	\$ 840.00
Pusher	Day	\$ 750.00		
Base Beam	P&A WELLBORE DIAGRAM			
B.O.P.	Day	\$ 280.00	2	\$ 560.00
Wiping Rubber Tbg	well	\$ 45.00		
Wiping Rubber Rods	well	\$ 45.00		
Pump & Tank	Day	\$ 187.50	2	\$ 375.00
Power Swivel	Day	\$ 750.00		
Flange	well	\$ 40.00		
Washington Head & Rubber	Day	\$ 425.00		
Backhoe, if available	Hour	\$ 65.00		
Cement	Sack	\$ 15.00	140	\$ 2,100.00
Cement Retainer 4 1/2"	bid	\$ 673.44		
Cement Retainer 5 1/2"	bid	\$ 673.44		
Cement Retainer 7"	bid	\$ 673.44		
CIBP 4 1/2"	bid	\$ 675.00	2	\$ 1,350.00
CIBP 5 1/2"	bid	\$ 673.44		
CIBP 7"	bid	\$ 673.44		
Thread dope	well	\$ 50.00	1	\$ 50.00
Tubing trailer	Day	\$ 100.00		
Hydrotesting 8,000'	well	\$ 1,375.00		
CBL - 8,000' to surface	well	\$ 3,000.00		
CBL - 2,000' to surface	well	\$ 1,800.00		
WL CIBP 8,000'	well	\$ 1,550.00	1	\$ 1,550.00
WL Dump Bail 2 sx	well	\$ 450.00	2	\$ 900.00
WL Squeeze hole 7,000'	well	\$ 625.00		
WL Squeeze hole 3,000'	well	\$ 750.00		
WL Squeeze hole 1,800'	well	\$ 625.00	1	\$ 625.00
or	cost plus %			
Winch Truck	Hour	\$ 135.00		
or	cost plus %			
Hydrovac	Hour			
or	cost plus %	\$ 0.15		
Disposal	BBL			
Other services - backhoe, welder, cut/cap well, skidster		\$ 1,000.00		
Wireline Set-Up	Day	\$ 1,725.00		
Cement Pumping Charge	Day	\$ 3,000.00	1	\$ 3,000.00
Frac Tank	Day	\$ 15.00		
Wireline Crew (Per Diem or Mileage)	Day	\$ 400.00		

Cement Tank	Day	\$ 200.00		
Water Hauling/Trucking				
80/100 BBL Bobtail	Hour	\$ 95.00		
80/100 BBL Bobtail Hazmat	Hour	\$ 120.00		
130/150 BBL Transport	Hour	\$ 110.00	8	\$ 880.00
130/150 BBL Transport Hazmat	Hour	\$ 135.00		
Winch Truck	Hour	\$ 115.00		
Laborer and Pickup	Hour	\$ 40.00		
Heavy Hauler Trailer	Hour	\$ 150.00		
Swamper (Laborer)	Hour	\$ 35.00		
Hydrovac	Hour	\$ 220.00		
Water per BBL	BBL	\$ 1.00	400	\$ 400.00
Solids & Liquids Disposal	BBL/CY	\$ 45.00		
Tubing Float (semi-flatbed)	Day	\$ 100.00		
Roustabout Services				
Roustabout Foreman with Truck	Hour	\$ 71.00	5	\$ 355.00
Roustabout Truck with Foreman and Trailer	Hour	\$ 96.00		
Backhoe	Hour	\$ 65.00	5	\$ 325.00
Skidsteer	Hour	\$ 45.00		
Extra Labor, Per Person	Hour	\$ 36.00		
Generator	Hour	\$ 10.00		
Mobile Steamer - Hotsy	Hour	\$ 50.00		
Welder	Hour	\$ 95.00	5	\$ 475.00
Hydrovac	Hour			
or	cost plus %	15%		
Mini excavator	Hour	\$ 55.00		
Vacuum Truck	Hour	\$ 100.00		
or	cost plus %			
Dump Truck	Hour	\$ 75.00		
Side Dump	Hour	\$ 100.00		
Hot Oil Services				
Hot Oiler	Hour	\$ 145.00		
Propane	Gal	\$ 2.35		
Contingents				
Contingent %	Percent	10.00%		\$ 1,872.50
ESTIMATED PLUGGING COST				\$ 18,725.00
ESTIMATED TOTAL COST WITH CONTINGENT				\$ 20,597.50

Sack 12-6

GL = 5059'
KB = 5069'
KB = 10.0'

API #: 05-001-09391-00
SWNW Sec. 6 T1S R67W 6 PM
ADAMS COUNTY, CO
CURRENT WELLBORE DIAGRAM



SURFACE CASING

12 1/4" Hole
8 5/8" 24# @ 1218'
CMT with 575 SX
TOC @ Surface

PRODUCTION STRING

2 3/8" 4.7# J-55 8RD tubing
Seat Nipple Notch Collar
TOTAL @ 7807'

PRODUCTION CASING

7 7/8" Hole
4 1/2" 11.6# to 8545l will send that Thatc
CMT with 285 SX 1st STG
TOC @ 6790'
CMT with 180 SX SC
Btm 5388'
TOC @ 4590'

Fort Hays - Codell Perfs

7854-8346

J-Sand Perfs

8334-8346

TD @ 8549'

Sack 12-6

GL = 5059'
 KB = 5069'
 KB = 10.0'

API #: 05-001-09391-00
 SWNW Sec. 6 T1S R67W 6 PM
 ADAMS COUNTY, CO
 P&A WELLBORE DIAGRAM

PROPOSED PLUG/CIBPS

10 SX plug at
 @ 100' to surface

SQUEEZE PERFS AT 1268'
 SQUEEZE WITH 40 SX

30 SX Plug from
 1318-1118

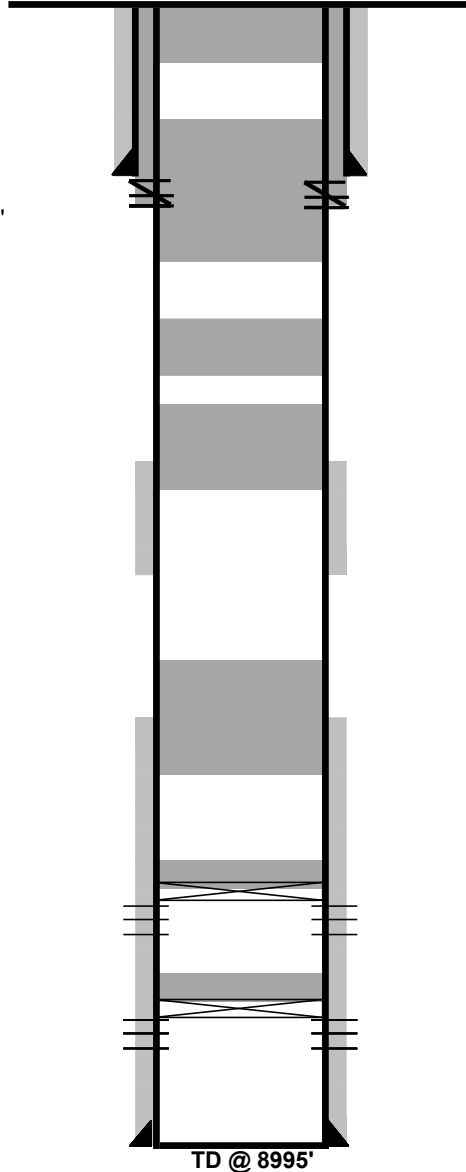
30 SX Plug from
 4300-4100

30 SX Plug from
 4640-4440

30 SX Plug from
 6840-6890

Proposed
CIBP @ 7804'
 w 2 SX Cement on top

Proposed
CIBP @ 8284'
 w 2 SX Cement on top



SURFACE CASING

12 1/4" Hole
 8 5/8" 24# @ 1218'
 CMT with 575 SX
 TOC @ Surface

PRODUCTION CASING

7 7/8" Hole
 4 1/2" 11.6# to 8545l will send that Thatch'
 CMT with 285 SX 1st STG
 TOC @ 6790'
 CMT with 180 SX SC
 Btm 5388'
 TOC @ 4590'

Fort Hays - Codell Perfs
 7854-8346

J-Sand Perfs
 8334-8346

PROCEDURE

- 1 MIRU. POOH Tubing while standing back.
- 2 RIH and Set CIBP as per WBD. Dump bail 2 SX cement on top.
- 3 PUH and shoot squeeze holes 50' below surface shoe.
- 4 MIRU Cementers. RIH and set balanced plugs as per wellbore diagram.
- 5 Spot squeeze cement. Initiate circulation to surface.
- 6 Initiate surface squeeze. Hesitate.
- 7 Spot last balanced plug across sqz. Tag surface plug with sandline.
- 8 RDMO.
- 9 Place 10 SX cement and surface. Cut wellhead off 10' below ground level.
- # Begin surface reclamation.

RATES AND FEES SCHEDULE OF PRICES AND COST \$ 20,927.50

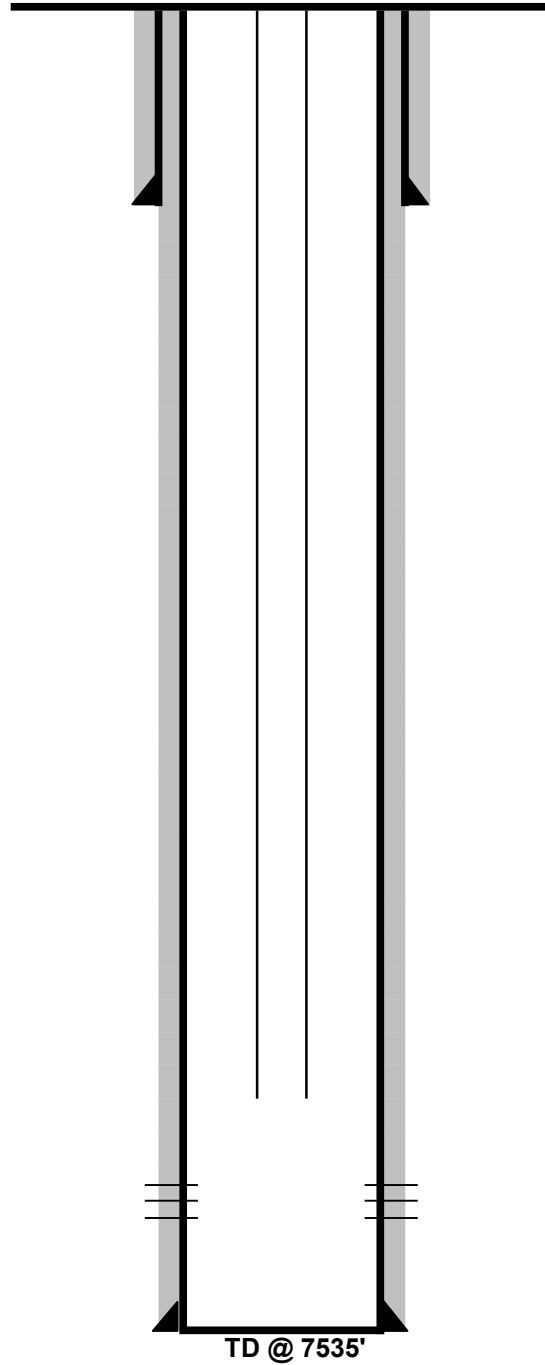
Description	Units	Quoted Price	Quantity	Total
Workover Rig Services				
Rig Charge - Operator with two person crew, Tubing Tongs, Air Slips, Swabbing tools	Hour	\$ 260.00	19	\$ 4,940.00
Extra Labor, Per Person	Hour	\$ 50.00		
Travel Time	Hour	\$ 210.00	4	\$ 840.00
Pusher	Day	\$ 750.00		
Base Beam	Day			
B.O.P.	Day	\$ 280.00	2	\$ 560.00
Wiping Rubber Tbg	well	\$ 45.00		
Wiping Rubber Rods	well	\$ 45.00		
Pump & Tank	Day	\$ 187.50	2	\$ 375.00
Power Swivel	Day	\$ 750.00		
Flange	well	\$ 40.00		
Washington Head & Rubber	Day	\$ 425.00		
Backhoe, if available	Hour	\$ 65.00		
Cement	Sack	\$ 15.00	160	\$ 2,400.00
Cement Retainer 4 1/2"	bid	\$ 673.44		
Cement Retainer 5 1/2"	bid	\$ 673.44		
Cement Retainer 7"	bid	\$ 673.44		
CIBP 4 1/2"	bid	\$ 675.00	2	\$ 1,350.00
CIBP 5 1/2"	bid	\$ 673.44		
CIBP 7"	bid	\$ 673.44		
Thread dope	well	\$ 50.00	1	\$ 50.00
Tubing trailer	Day	\$ 100.00		
Hydrotesting 8,000'	well	\$ 1,375.00		
CBL - 8,000' to surface	well	\$ 3,000.00		
CBL - 2,000' to surface	well	\$ 1,800.00		
WL CIBP 8,000'	well	\$ 1,550.00	1	\$ 1,550.00
WL Dump Bail 2 sx	well	\$ 450.00	2	\$ 900.00
WL Squeeze hole 7,000'	well	\$ 625.00		
WL Squeeze hole 3,000'	well	\$ 750.00		
WL Squeeze hole 1,800'	well	\$ 625.00	1	\$ 625.00
or	cost plus %			
Winch Truck	Hour	\$ 135.00		
or	cost plus %			
Hydrovac	Hour			
or	cost plus %	\$ 0.15		
Disposal	BBL			
Other services - backhoe, welder, cut/cap well, skidster		\$ 1,000.00		
Wireline Set-Up	Day	\$ 1,725.00		
Cement Pumping Charge	Day	\$ 3,000.00	1	\$ 3,000.00
Frac Tank	Day	\$ 15.00		
Wireline Crew (Per Diem or Mileage)	Day	\$ 400.00		
Cement Tank	Day	\$ 200.00		
Water Hauling/Trucking				
80/100 BBL Bobtail	Hour	\$ 95.00		

80/100 BBL Bobtail Hazmat	Hour	\$ 120.00		
130/150 BBL Transport	Hour	\$ 110.00	8	\$ 880.00
130/150 BBL Transport Hazmat	Hour	\$ 135.00		
Winch Truck	Hour	\$ 115.00		
Laborer and Pickup	Hour	\$ 40.00		
Heavy Hauler Trailer	Hour	\$ 150.00		
Swamper (Laborer)	Hour	\$ 35.00		
Hydrovac	Hour	\$ 220.00		
Water per BBL	BBL	\$ 1.00	400	\$ 400.00
Solids & Liquids Disposal	BBL/CY	\$ 45.00		
Tubing Float (semi-flatbed)	Day	\$ 100.00		
Roustabout Services				
Roustabout Foreman with Truck	Hour	\$ 71.00	5	\$ 355.00
Roustabout Truck with Foreman and Trailer	Hour	\$ 96.00		
Backhoe	Hour	\$ 65.00	5	\$ 325.00
Skidsteer	Hour	\$ 45.00		
Extra Labor, Per Person	Hour	\$ 36.00		
Generator	Hour	\$ 10.00		
Mobile Steamer - Hotsy	Hour	\$ 50.00		
Welder	Hour	\$ 95.00	5	\$ 475.00
Hydrovac	Hour			
or	cost plus %	15%		
Mini excavator	Hour	\$ 55.00		
Vacuum Truck	Hour	\$ 100.00		
or	cost plus %			
Dump Truck	Hour	\$ 75.00		
Side Dump	Hour	\$ 100.00		
Hot Oil Services				
Hot Oiler	Hour	\$ 145.00		
Propane	Gal	\$ 2.35		
Contingents				
Contingent %	Percent	10.00%		\$ 1,902.50
ESTIMATED PLUGGING COST				\$ 19,025.00
ESTIMATED TOTAL COST WITH CONTINGENT				\$ 20,927.50

UPRR Brnak 33-31

GL = 4976'
KB = 4986'
KB = 10.0'

API #: 05-123-11906-00
NWSE Sec. 31 T1N R63W 6 PM
WELD COUNTY, CO
CURRENT WELLBORE DIAGRAM



SURFACE CASING

12 1/4" Hole
8 5/8" 36# @ 223'
CMT with 200 SX
TOC @ Surface

PRODUCTION STRING

2 7/8" 6.5# J-55 8RD tubing
XN profile nipple
TOTAL @ 7377'

PRODUCTION CASING

7 7/8" Hole
5 1/2" 17# to 7539'
CMT with 275 SX
TOC @ Surface

D Sand Perfs

7380-7388'
16 Perfs ; Size .38 inches

UPRR Brnak 33-31

API #: 05-123-11906-00

NWSE Sec. 31 T1N R63W 6 PM

WELD COUNTY, CO

P&A WELLBORE DIAGRAM

GL = 4976'

KB = 4986'

KB = 10.0'

PROPOSED PLUG/CIBPS

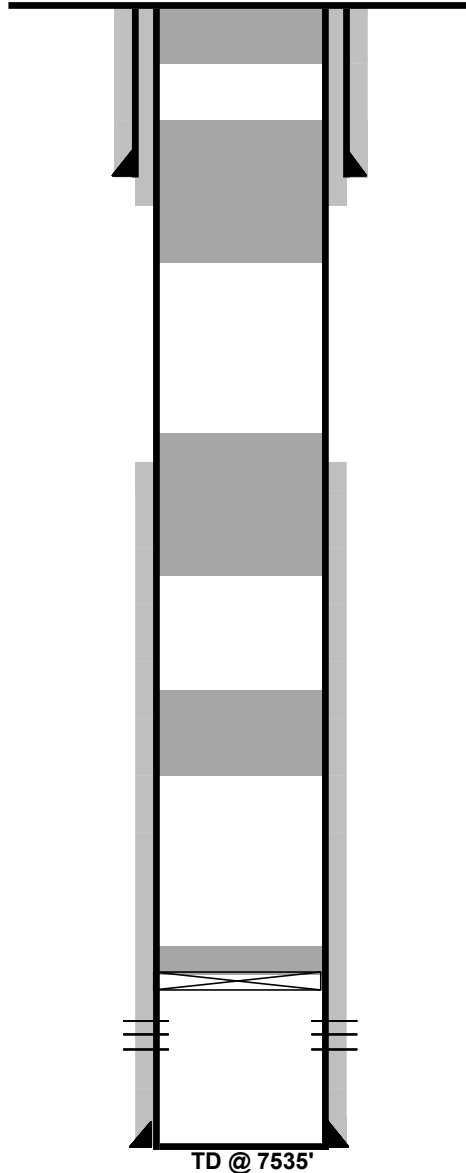
10 SX plug at
@ 100' to surface

50 SX Plug from
1050-200

30 SX Plug from
4300-4100

30 SX Plug from
5300-5100

Proposed
CIBP @ 7330'
w 2 SX Cement on top



SURFACE CASING

12 1/4" Hole
8 5/8" 36# @ 223'
CMT with 200 SX
TOC @ Surface

PRODUCTION CASING

7 7/8" Hole
5 1/2" 17# to 7539'
CMT with 275 SX
TOC @ 5735

DV tool at 939, Cement with 300 SX

D Sand Perfs

7380-7388'
16 Perfs ; Size .38 inches

PROCEDURE

- 1 MIRU. POOH Tubing while standing back.
- 2 RIH and Set CIBP as per WBD. Dump bail 2 SX cement on top.
- 3 PUH and shoot squeeze holes 50' below surface shoe.
- 4 MIRU Cementers. RIH and set balanced plugs as per wellbore diagram.
- 5 Spot squeeze cement. Initiate circulation to surface.
- 6 Initiate surface squeeze. Hesitate.
- 7 Spot last balanced plug across sqz. Tag surface plug with sandline.
- 8 RDMO.
- 9 Place 10 SX cement and surface. Cut wellhead off 10' below ground level.
- # Begin surface reclamation.

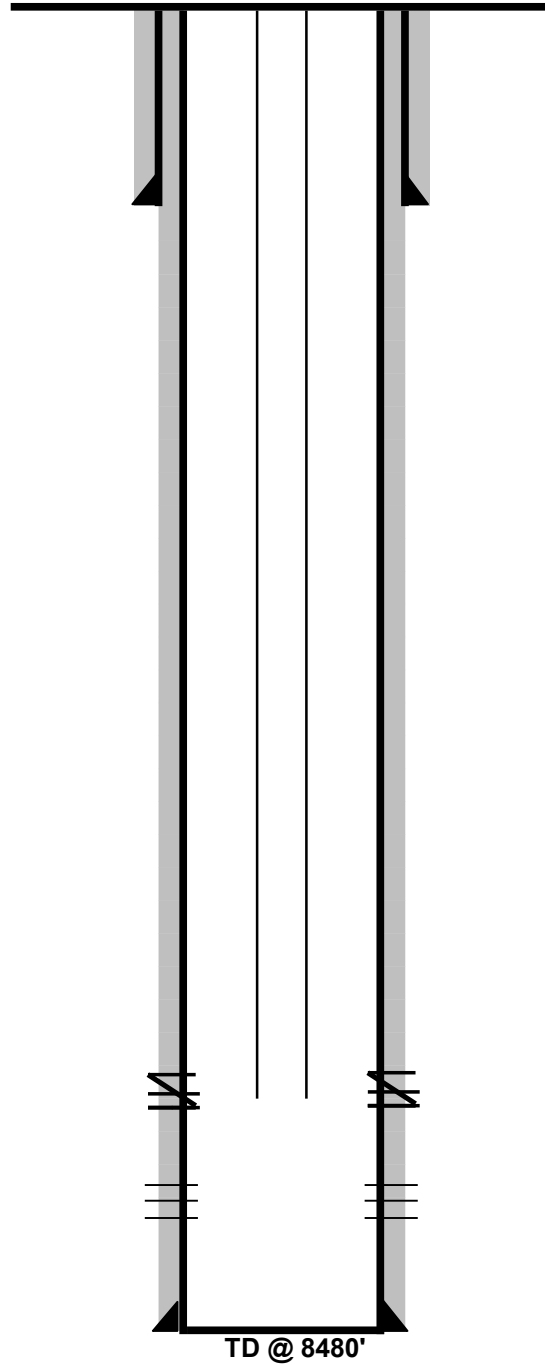
RATES AND FEES SCHEDULE OF PRICES AND QUANTITIES			COST	\$ 19,030.00
Description	Units	Quoted Price	Quantity	Total
Workover Rig Services				
Rig Charge - Operator with two person crew, Tubing Tongs, Air Slips, Swabbing tools	Hour	\$ 260.00	19	\$ 4,940.00
Extra Labor, Per Person	Hour	\$ 50.00		
Travel Time	Hour	\$ 210.00	4	\$ 840.00
Pusher	Day	\$ 750.00		
Base Beam	Day			
B.O.P.	Day	\$ 280.00	2	\$ 560.00
Wiping Rubber Tbg	well	\$ 45.00		
Wiping Rubber Rods	well	\$ 45.00		
Pump & Tank	Day	\$ 187.50	2	\$ 375.00
Power Swivel	Day	\$ 750.00		
Flange	well	\$ 40.00		
Washington Head & Rubber	Day	\$ 425.00		
Backhoe, if available	Hour	\$ 65.00		
Cement	Sack	\$ 15.00	120	\$ 1,800.00
Cement Retainer 4 1/2"	bid	\$ 675.00		
Cement Retainer 5 1/2"	bid	\$ 675.00		
Cement Retainer 7"	bid	\$ 675.00		
CIBP 4 1/2"	bid	\$ 675.00	1	\$ 675.00
CIBP 5 1/2"	bid	\$ 675.00		
CIBP 7"	bid	\$ 675.00		
Thread dope	well	\$ 50.00	1	\$ 50.00
Tubing trailer	Day	\$ 100.00		
Hydrotesting 8,000'	well	\$ 1,375.00		
CBL - 8,000' to surface	well	\$ 3,000.00		
CBL - 2,000' to surface	well	\$ 1,800.00		
WL CIBP 8,000'	well	\$ 1,550.00	1	\$ 1,550.00
WL Dump Bail 2 sx	well	\$ 450.00	1	\$ 450.00
WL Squeeze hole 7,000'	well	\$ 625.00		
WL Squeeze hole 3,000'	well	\$ 750.00		
WL Squeeze hole 1,800'	well	\$ 625.00	1	\$ 625.00
or	cost plus %			
Winch Truck	Hour	\$ 135.00		
or	cost plus %			
Hydrovac	Hour			
or	cost plus %	\$ 0.15		
Disposal	BBL			
Other services - backhoe, welder, cut/cap well, skidster		\$ 1,000.00		
Wireline Set-Up	Day	\$ 1,725.00		
Cement Pumping Charge	Day	\$ 3,000.00	1	\$ 3,000.00
Frac Tank	Day	\$ 15.00		
Wireline Crew (Per Diem or Mileage)	Day	\$ 400.00		
Cement Tank	Day	\$ 200.00		
Water Hauling/Trucking				
80/100 BBL Bobtail	Hour	\$ 95.00		

80/100 BBL Bobtail Hazmat	Hour	\$ 120.00		
130/150 BBL Transport	Hour	\$ 110.00	8	\$ 880.00
130/150 BBL Transport Hazmat	Hour	\$ 135.00		
Winch Truck	Hour	\$ 115.00		
Laborer and Pickup	Hour	\$ 40.00		
Heavy Hauler Trailer	Hour	\$ 150.00		
Swamper (Laborer)	Hour	\$ 35.00		
Hydrovac	Hour	\$ 220.00		
Water per BBL	BBL	\$ 1.00	400	\$ 400.00
Solids & Liquids Disposal	BBL/CY	\$ 45.00		
Tubing Float (semi-flatbed)	Day	\$ 100.00		
Roustabout Services				
Roustabout Foreman with Truck	Hour	\$ 71.00	5	\$ 355.00
Roustabout Truck with Foreman and Trailer	Hour	\$ 96.00		
Backhoe	Hour	\$ 65.00	5	\$ 325.00
Skidsteer	Hour	\$ 45.00		
Extra Labor, Per Person	Hour	\$ 36.00		
Generator	Hour	\$ 10.00		
Mobile Steamer - Hotsy	Hour	\$ 50.00		
Welder	Hour	\$ 95.00	5	\$ 475.00
Hydrovac	Hour			
or	cost plus %	15%		
Mini excavator	Hour	\$ 55.00		
Vacuum Truck	Hour	\$ 100.00		
or	cost plus %			
Dump Truck	Hour	\$ 75.00		
Side Dump	Hour	\$ 100.00		
Hot Oil Services				
Hot Oiler	Hour	\$ 145.00		
Propane	Gal	\$ 2.35		
Contingents				
Contingent %	Percent	10.00%		\$ 1,730.00
ESTIMATED PLUGGING COST				\$ 17,300.00
ESTIMATED TOTAL COST WITH CONTINGENT				\$ 19,030.00

Zarlengo 2

GL = 5135'
KB = 5141'
KB = 6.0'

API #: 05-001-08810-00
NWNW Sec. 4 T1S R67W 6 PM
ADAMS COUNTY, CO
CURRENT WELLBORE DIAGRAM



SURFACE CASING

13 3/8" Hole
9 5/8" 36# @ 304'
CMT with 275 SX
TOC @ Surface

PRODUCTION STRING

2 3/8" 4.7# J-55 8RD tubing
XN Nipple
TOTAL @ 7481'

PRODUCTION CASING

7 7/8" Hole
4 1/2" 11.6# to 8552'
CMT with 650 SX
TOC @ Surface

Squeezed
Niobrara - Codell Perfs
7534-7954'
Squeeze with 130 SX Cement

J-Sand
8383-8408

TD @ 8480'

Zarlengo 2

GL = 5135'
 KB = 5141'
 KB = 6.0'

API #: 05-001-08810-00
 NWNW Sec. 4 T1S R67W 6 PM
 ADAMS COUNTY, CO
 P&A WELLBORE DIAGRAM

PROPOSED PLUG/CIBPS

10 SX plug at
 @ 100' to surface

30 SX Plug from
 1300-1100

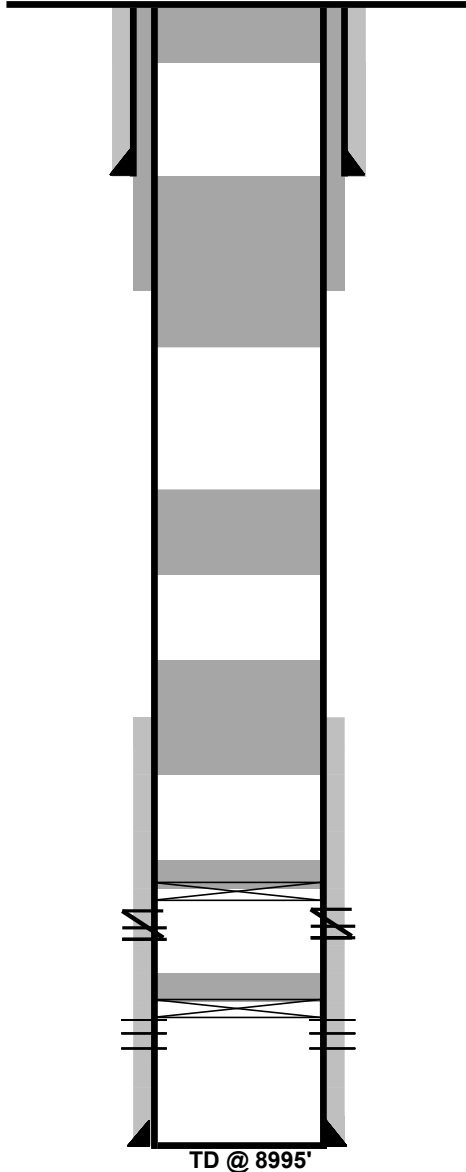
30 SX Plug from
 4300-4100

30 SX Plug from
 4000-3800

30 SX Plug from
 6200-6000

Proposed
CIBP @ 7284'
 w 2 SX Cement on top

Proposed
CIBP @ 8333'
 w 2 SX Cement on top



SURFACE CASING

13 3/8" Hole
 9 5/8" 36# @ 304'
 CMT with 275 SX
 TOC @ Surface

PRODUCTION STRING

2 3/8" 4.7# J-55 8RD tubing
 XN Nipple
 TOTAL @ 7481'

PRODUCTION CASING

7 7/8" Hole
 4 1/2" 11.6# to 8552'
 CMT with 650 SX
 TOC 1 Stage at 6150'
 DV @ 1250'
 TOC 2 at Surface

Squeezed
Niobrara - Codell Perfs
 7534-7954'
 Squeeze with 130 SX Cement

J-Sand
 8383-8408

PROCEDURE

- 1 MIRU. POOH Tubing while standing back.
- 2 RIH and Set CIBP as per WBD. Dump bail 2 SX cement on top.
- 3 PUH and shoot squeeze holes 50' below surface shoe.
- 4 MIRU Cementers. RIH and set balanced plugs as per wellbore diagram.
- 5 Spot squeeze cement. Initiate circulation to surface.
- 6 Initiate surface squeeze. Hesitate.
- 7 Spot last balanced plug across sqz. Tag surface plug with sandline.
- 8 RDMO.
- 9 Place 10 SX cement and surface. Cut wellhead off 10' below ground level.
- # Begin surface reclamation.

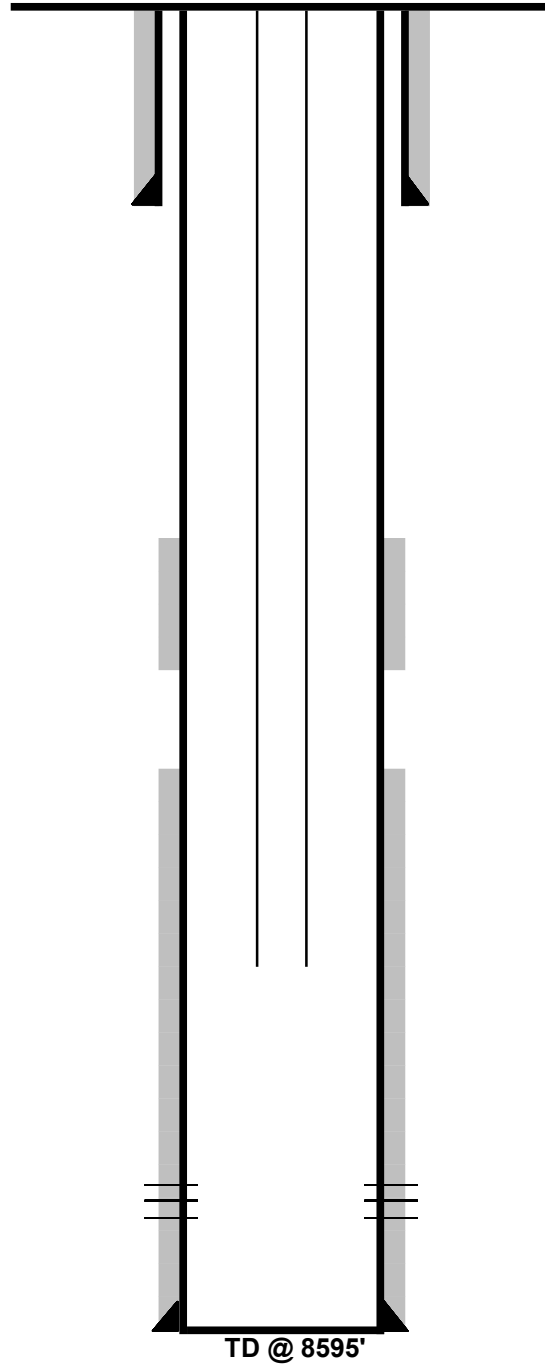
RATES AND FEES SCHEDULE OF PRICES AND QUANTITIES			COST	\$ 19,745.00
Description	Units	Quoted Price	Quantity	Total
Workover Rig Services				
Rig Charge - Operator with two person crew, Tubing Tongs, Air Slips, Swabbing tools	Hour	\$ 260.00	19	\$ 4,940.00
Extra Labor, Per Person	Hour	\$ 50.00		
Travel Time	Hour	\$ 210.00	4	\$ 840.00
Pusher	Day	\$ 750.00		
Base Beam	Day			
B.O.P.	Day	\$ 280.00	2	\$ 560.00
Wiping Rubber Tbg	well	\$ 45.00		
Wiping Rubber Rods	well	\$ 45.00		
Pump & Tank	Day	\$ 187.50	2	\$ 375.00
Power Swivel	Day	\$ 750.00		
Flange	well	\$ 40.00		
Washington Head & Rubber	Day	\$ 425.00		
Backhoe, if available	Hour	\$ 65.00		
Cement	Sack	\$ 15.00	130	\$ 1,950.00
Cement Retainer 4 1/2"	bid	\$ 673.44		
Cement Retainer 5 1/2"	bid	\$ 673.44		
Cement Retainer 7"	bid	\$ 673.44		
CIBP 4 1/2"	bid	\$ 675.00	2	\$ 1,350.00
CIBP 5 1/2"	bid	\$ 673.44		
CIBP 7"	bid	\$ 673.44		
Thread dope	well	\$ 50.00	1	\$ 50.00
Tubing trailer	Day	\$ 100.00		
Hydrotesting 8,000'	well	\$ 1,375.00		
CBL - 8,000' to surface	well	\$ 3,000.00		
CBL - 2,000' to surface	well	\$ 1,800.00		
WL CIBP 8,000'	well	\$ 1,550.00	1	\$ 1,550.00
WL Dump Bail 2 sx	well	\$ 450.00	2	\$ 900.00
WL Squeeze hole 7,000'	well	\$ 625.00		
WL Squeeze hole 3,000'	well	\$ 750.00		
WL Squeeze hole 1,800'	well	\$ 625.00	0	\$ -
or	cost plus %			
Winch Truck	Hour	\$ 135.00		
or	cost plus %			
Hydrovac	Hour			
or	cost plus %	\$ 0.15		
Disposal	BBL			
Other services - backhoe, welder, cut/cap well, skidster		\$ 1,000.00		
Wireline Set-Up	Day	\$ 1,725.00		
Cement Pumping Charge	Day	\$ 3,000.00	1	\$ 3,000.00
Frac Tank	Day	\$ 15.00		
Wireline Crew (Per Diem or Mileage)	Day	\$ 400.00		
Cement Tank	Day	\$ 200.00		
Water Hauling/Trucking				
80/100 BBL Bobtail	Hour	\$ 95.00		

80/100 BBL Bobtail Hazmat	Hour	\$ 120.00		
130/150 BBL Transport	Hour	\$ 110.00	8	\$ 880.00
130/150 BBL Transport Hazmat	Hour	\$ 135.00		
Winch Truck	Hour	\$ 115.00		
Laborer and Pickup	Hour	\$ 40.00		
Heavy Hauler Trailer	Hour	\$ 150.00		
Swamper (Laborer)	Hour	\$ 35.00		
Hydrovac	Hour	\$ 220.00		
Water per BBL	BBL	\$ 1.00	400	\$ 400.00
Solids & Liquids Disposal	BBL/CY	\$ 45.00		
Tubing Float (semi-flatbed)	Day	\$ 100.00		
Roustabout Services				
Roustabout Foreman with Truck	Hour	\$ 71.00	5	\$ 355.00
Roustabout Truck with Foreman and Trailer	Hour	\$ 96.00		
Backhoe	Hour	\$ 65.00	5	\$ 325.00
Skidsteer	Hour	\$ 45.00		
Extra Labor, Per Person	Hour	\$ 36.00		
Generator	Hour	\$ 10.00		
Mobile Steamer - Hotsy	Hour	\$ 50.00		
Welder	Hour	\$ 95.00	5	\$ 475.00
Hydrovac	Hour			
or	cost plus %	15%		
Mini excavator	Hour	\$ 55.00		
Vacuum Truck	Hour	\$ 100.00		
or	cost plus %			
Dump Truck	Hour	\$ 75.00		
Side Dump	Hour	\$ 100.00		
Hot Oil Services				
Hot Oiler	Hour	\$ 145.00		
Propane	Gal	\$ 2.35		
Contingents				
Contingent %	Percent	10.00%		\$ 1,795.00
ESTIMATED PLUGGING COST				\$ 17,950.00
ESTIMATED TOTAL COST WITH CONTINGENT				\$ 19,745.00

Zarlengo 14-4

GL = 5223'
KB = 5232'
KB = 9.0'

API #: 05-001-09384-00
SWSW Sec. 4 T1S R67W 6 PM
ADAMS COUNTY, CO
CURRENT WELLBORE DIAGRAM



SURFACE CASING

12 1/4" Hole
8 5/8" 24# @ 1375'
CMT with 599 SX
TOC @ Surface

PRODUCTION STRING

2 3/8" 4.7# J-55 8RD tubing
XN Nipple
TOTAL @ 8425'

PRODUCTION CASING

7 7/8" Hole
4 1/2" 11.6# to 8520'
CMT with 280 SX 1st STG
TOC @ 7050'
CMT with 265 SX SC
Btm 5460'
TOC @ 4600'

J-Sand Perfs

8444-8476'
32 Perfs ; Size .38 inches

Zarlengo 14-4

API #: 05-001-09384-00

SWSW Sec. 4 T1S R67W 6 PM

ADAMS COUNTY, CO

P&A WELLBORE DIAGRAM

GL = 5223'

KB = 5232'

KB = 9.0'

PROPOSED PLUG/CIBPS

10 SX plug at
@ 100' to surface

SQUEEZE PERFS AT 1425'
SQUEEZE WITH 40 SX

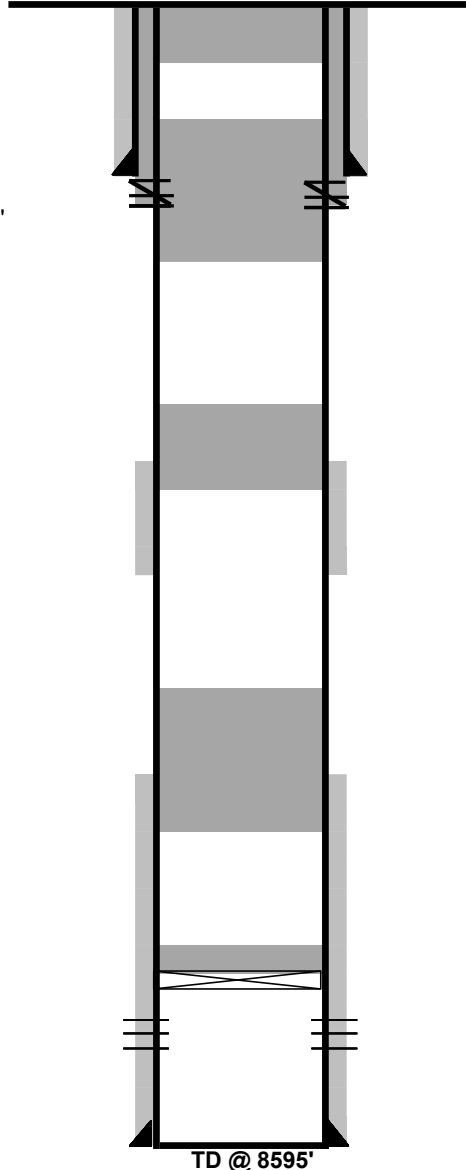
30 SX Plug from
1475-1275

30 SX Plug from
4300-4100

30 SX Plug from
4650'-4450

30 SX Plug from
7100-6900

Proposed
CIBP @ 8394
w 2 SX Cement on top



SURFACE CASING

12 1/4" Hole
8 5/8" 24# @ 1375'
CMT with 599 SX
TOC @ Surface

PRODUCTION STRING

2 3/8" 4.7# J-55 8RD tubing
XN Nipple
TOTAL @ 8425'

PRODUCTION CASING

7 7/8" Hole
4 1/2" 11.6# to 8520'
CMT with 280 SX 1st STG
TOC @ 7050'
CMT with 265 SX SC
Btm 5460'
TOC @ 4600'

J-Sand Perfs

8444-8476'
32 Perfs ; Size .38 inches

PROCEDURE

- 1 MIRU. POOH Tubing while standing back.
- 2 RIH and Set CIBP as per WBD. Dump bail 2 SX cement on top.
- 3 PUH and shoot squeeze holes 50' below surface shoe.
- 4 MIRU Cementers. RIH and set balanced plugs as per wellbore diagram.
- 5 Spot squeeze cement. Initiate circulation to surface.
- 6 Initiate surface squeeze. Hesitate.
- 7 Spot last balanced plug across sqz. Tag surface plug with sandline.
- 8 RDMO.
- 9 Place 10 SX cement and surface. Cut wellhead off 10' below ground level.
- # Begin surface reclamation.

TD @ 8595'

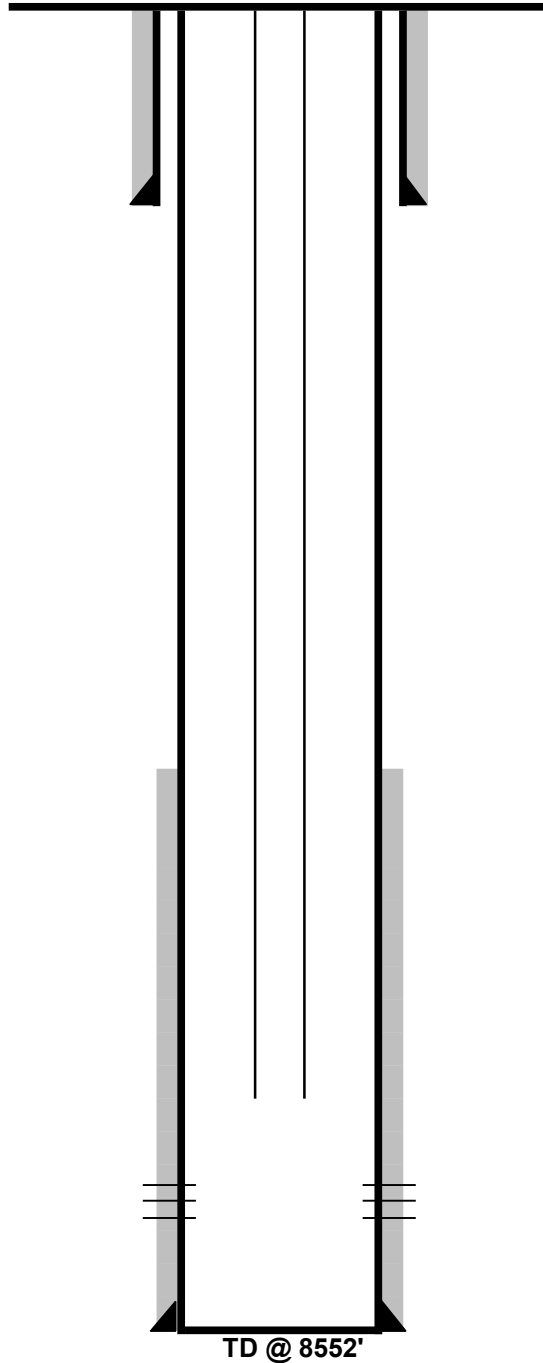
RATES AND FEES SCHEDULE OF PRICES AND QUANTITIES			COST	\$ 19,690.00
Description	Units	Quoted Price	Quantity	Total
Workover Rig Services				
Rig Charge - Operator with two person crew, Tubing Tongs, Air Slips, Swabbing tools	Hour	\$ 260.00	19	\$ 4,940.00
Extra Labor, Per Person	Hour	\$ 50.00		
Travel Time	Hour	\$ 210.00	4	\$ 840.00
Pusher	Day	\$ 750.00		
Base Beam	Day			
B.O.P.	Day	\$ 280.00	2	\$ 560.00
Wiping Rubber Tbg	well	\$ 45.00		
Wiping Rubber Rods	well	\$ 45.00		
Pump & Tank	Day	\$ 187.50	2	\$ 375.00
Power Swivel	Day	\$ 750.00		
Flange	well	\$ 40.00		
Washington Head & Rubber	Day	\$ 425.00		
Backhoe, if available	Hour	\$ 65.00		
Cement	Sack	\$ 15.00	160	\$ 2,400.00
Cement Retainer 4 1/2"	bid	\$ 673.44		
Cement Retainer 5 1/2"	bid	\$ 673.44		
Cement Retainer 7"	bid	\$ 673.44		
CIBP 4 1/2"	bid	\$ 675.00	1	\$ 675.00
CIBP 5 1/2"	bid	\$ 673.44		
CIBP 7"	bid	\$ 673.44		
Thread dope	well	\$ 50.00	1	\$ 50.00
Tubing trailer	Day	\$ 100.00		
Hydrotesting 8,000'	well	\$ 1,375.00		
CBL - 8,000' to surface	well	\$ 3,000.00		
CBL - 2,000' to surface	well	\$ 1,800.00		
WL CIBP 8,000'	well	\$ 1,550.00	1	\$ 1,550.00
WL Dump Bail 2 sx	well	\$ 450.00	1	\$ 450.00
WL Squeeze hole 7,000'	well	\$ 625.00		
WL Squeeze hole 3,000'	well	\$ 750.00		
WL Squeeze hole 1,800'	well	\$ 625.00	1	\$ 625.00
or	cost plus %			
Winch Truck	Hour	\$ 135.00		
or	cost plus %			
Hydrovac	Hour			
or	cost plus %	\$ 0.15		
Disposal	BBL			
Other services - backhoe, welder, cut/cap well, skidster		\$ 1,000.00		
Wireline Set-Up	Day	\$ 1,725.00		
Cement Pumping Charge	Day	\$ 3,000.00	1	\$ 3,000.00
Frac Tank	Day	\$ 15.00		
Wireline Crew (Per Diem or Mileage)	Day	\$ 400.00		
Cement Tank	Day	\$ 200.00		
Water Hauling/Trucking				
80/100 BBL Bobtail	Hour	\$ 95.00		

80/100 BBL Bobtail Hazmat	Hour	\$ 120.00		
130/150 BBL Transport	Hour	\$ 110.00	8	\$ 880.00
130/150 BBL Transport Hazmat	Hour	\$ 135.00		
Winch Truck	Hour	\$ 115.00		
Laborer and Pickup	Hour	\$ 40.00		
Heavy Hauler Trailer	Hour	\$ 150.00		
Swamper (Laborer)	Hour	\$ 35.00		
Hydrovac	Hour	\$ 220.00		
Water per BBL	BBL	\$ 1.00	400	\$ 400.00
Solids & Liquids Disposal	BBL/CY	\$ 45.00		
Tubing Float (semi-flatbed)	Day	\$ 100.00		
Roustabout Services				
Roustabout Foreman with Truck	Hour	\$ 71.00	5	\$ 355.00
Roustabout Truck with Foreman and Trailer	Hour	\$ 96.00		
Backhoe	Hour	\$ 65.00	5	\$ 325.00
Skidsteer	Hour	\$ 45.00		
Extra Labor, Per Person	Hour	\$ 36.00		
Generator	Hour	\$ 10.00		
Mobile Steamer - Hotsy	Hour	\$ 50.00		
Welder	Hour	\$ 95.00	5	\$ 475.00
Hydrovac	Hour			
or	cost plus %	15%		
Mini excavator	Hour	\$ 55.00		
Vacuum Truck	Hour	\$ 100.00		
or	cost plus %			
Dump Truck	Hour	\$ 75.00		
Side Dump	Hour	\$ 100.00		
Hot Oil Services				
Hot Oiler	Hour	\$ 145.00		
Propane	Gal	\$ 2.35		
Contingents				
Contingent %	Percent	10.00%		\$ 1,790.00
ESTIMATED PLUGGING COST				\$ 17,900.00
ESTIMATED TOTAL COST WITH CONTINGENT				\$ 19,690.00

Zarlengo 21-4

GL = 5106'
KB = 5112'
KB = 6.0'

API #: 05-001-09468-00
NENW Sec. 4 T1S R67W 6 PM
ADAMS COUNTY, CO
CURRENT WELLBORE DIAGRAM



SURFACE CASING

12 1/4" Hole
8 5/8" 24# @ 1355'
CMT with 880 SX
TOC @ Surface

PRODUCTION STRING

2 3/8" 4.7# J-55 8RD tubing
XN Nipple
TOTAL @ 8328'

PRODUCTION CASING

7 7/8" Hole
4 1/2" 11.6# to 8552'
CMT with 389 SX
TOC @ 4480'

J Sand Perfs

8376-8412'
81 Perfs ; Size .42 inches

TD @ 8552'

Zarlengo 21-4

API #: 05-001-09468-00

NENW Sec. 4 T1S R67W 6 PM

ADAMS COUNTY, CO

P&A WELLBORE DIAGRAM

GL = 5106'

KB = 5112'

KB = 6.0'

PROPOSED PLUG/CIBPS

10 SX plug at
@ 100' to surface

SQUEEZE PERFS AT 1405'
SQUEEZE WITH 40 SX

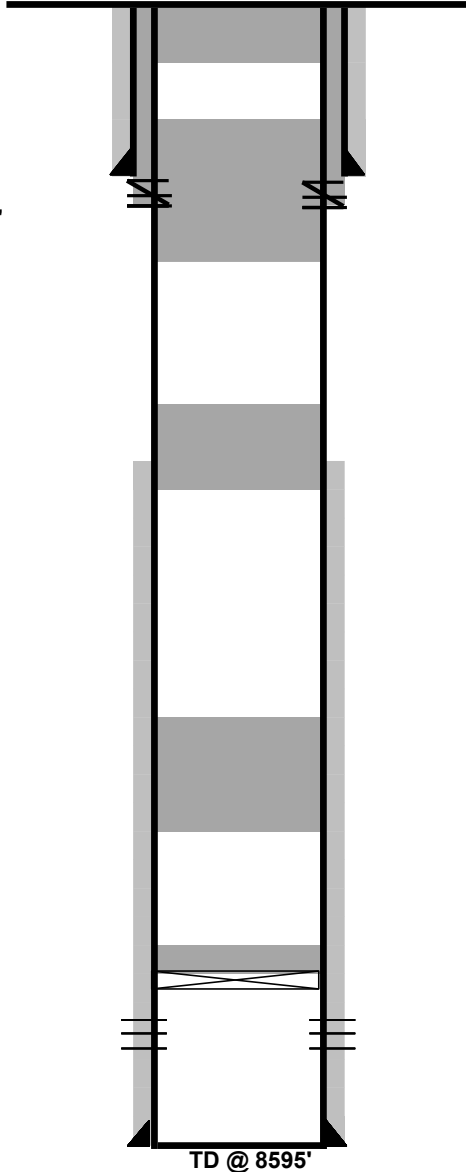
30 SX Plug from
1455-1255

30 SX Plug from
4300-4100

30 SX Plug from
4530'-4330

30 SX Plug from
6300-6100

Proposed
CIBP @ 8326
w 2 SX Cement on top



SURFACE CASING

12 1/4" Hole
8 5/8" 24# @ 1355'
CMT with 880 SX
TOC @ Surface

PRODUCTION STRING

2 3/8" 4.7# J-55 8RD tubing
XN Nipple
TOTAL @ 8328'

PRODUCTION CASING

7 7/8" Hole
4 1/2" 11.6# to 8552'
TOC @ 4480' BY CBL

J Sand Perfs

8376-8412'
81 Perfs ; Size .42 inches

PROCEDURE

- 1 MIRU. POOH Tubing while standing back.
- 2 RIH and Set CIBP as per WBD. Dump bail 2 SX cement on top.
- 3 PUH and shoot squeeze holes 50' below surface shoe.
- 4 MIRU Cementers. RIH and set balanced plugs as per wellbore diagram.
- 5 Spot squeeze cement. Initiate circulation to surface.
- 6 Initiate surface squeeze. Hesitate.
- 7 Spot last balanced plug across sqz. Tag surface plug with sandline.
- 8 RDMO.
- 9 Place 10 SX cement and surface. Cut wellhead off 10' below ground level.
- # Begin surface reclamation.

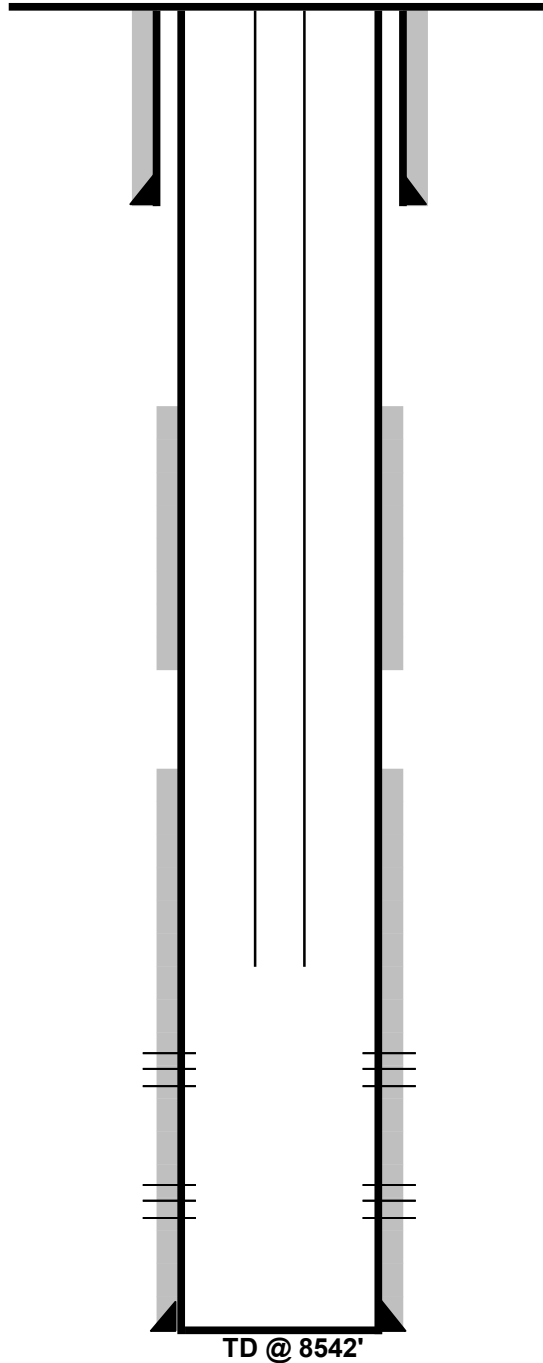
RATES AND FEES SCHEDULE OF PRICES AND QUANTITIES			COST	\$ 19,195.00
Description	Units	Quoted Price	Quantity	Total
Workover Rig Services				
Rig Charge - Operator with two person crew, Tubing Tongs, Air Slips, Swabbing tools	Hour	\$ 260.00	19	\$ 4,940.00
Extra Labor, Per Person	Hour	\$ 50.00		
Travel Time	Hour	\$ 210.00	4	\$ 840.00
Pusher	Day	\$ 750.00		
Base Beam	Day			
B.O.P.	Day	\$ 280.00	2	\$ 560.00
Wiping Rubber Tbg	well	\$ 45.00		
Wiping Rubber Rods	well	\$ 45.00		
Pump & Tank	Day	\$ 187.50	2	\$ 375.00
Power Swivel	Day	\$ 750.00		
Flange	well	\$ 40.00		
Washington Head & Rubber	Day	\$ 425.00		
Backhoe, if available	Hour	\$ 65.00		
Cement	Sack	\$ 15.00	130	\$ 1,950.00
Cement Retainer 4 1/2"	bid	\$ 673.44		
Cement Retainer 5 1/2"	bid	\$ 673.44		
Cement Retainer 7"	bid	\$ 673.44		
CIBP 4 1/2"	bid	\$ 675.00	1	\$ 675.00
CIBP 5 1/2"	bid	\$ 673.44		
CIBP 7"	bid	\$ 673.44		
Thread dope	well	\$ 50.00	1	\$ 50.00
Tubing trailer	Day	\$ 100.00		
Hydrotesting 8,000'	well	\$ 1,375.00		
CBL - 8,000' to surface	well	\$ 3,000.00		
CBL - 2,000' to surface	well	\$ 1,800.00		
WL CIBP 8,000'	well	\$ 1,550.00	1	\$ 1,550.00
WL Dump Bail 2 sx	well	\$ 450.00	1	\$ 450.00
WL Squeeze hole 7,000'	well	\$ 625.00		
WL Squeeze hole 3,000'	well	\$ 750.00		
WL Squeeze hole 1,800'	well	\$ 625.00	1	\$ 625.00
or	cost plus %			
Winch Truck	Hour	\$ 135.00		
or	cost plus %			
Hydrovac	Hour			
or	cost plus %	\$ 0.15		
Disposal	BBL			
Other services - backhoe, welder, cut/cap well, skidster		\$ 1,000.00		
Wireline Set-Up	Day	\$ 1,725.00		
Cement Pumping Charge	Day	\$ 3,000.00	1	\$ 3,000.00
Frac Tank	Day	\$ 15.00		
Wireline Crew (Per Diem or Mileage)	Day	\$ 400.00		
Cement Tank	Day	\$ 200.00		
Water Hauling/Trucking				
80/100 BBL Bobtail	Hour	\$ 95.00		

80/100 BBL Bobtail Hazmat	Hour	\$ 120.00		
130/150 BBL Transport	Hour	\$ 110.00	8	\$ 880.00
130/150 BBL Transport Hazmat	Hour	\$ 135.00		
Winch Truck	Hour	\$ 115.00		
Laborer and Pickup	Hour	\$ 40.00		
Heavy Hauler Trailer	Hour	\$ 150.00		
Swamper (Laborer)	Hour	\$ 35.00		
Hydrovac	Hour	\$ 220.00		
Water per BBL	BBL	\$ 1.00	400	\$ 400.00
Solids & Liquids Disposal	BBL/CY	\$ 45.00		
Tubing Float (semi-flatbed)	Day	\$ 100.00		
Roustabout Services				
Roustabout Foreman with Truck	Hour	\$ 71.00	5	\$ 355.00
Roustabout Truck with Foreman and Trailer	Hour	\$ 96.00		
Backhoe	Hour	\$ 65.00	5	\$ 325.00
Skidsteer	Hour	\$ 45.00		
Extra Labor, Per Person	Hour	\$ 36.00		
Generator	Hour	\$ 10.00		
Mobile Steamer - Hotsy	Hour	\$ 50.00		
Welder	Hour	\$ 95.00	5	\$ 475.00
Hydrovac	Hour			
or	cost plus %	15%		
Mini excavator	Hour	\$ 55.00		
Vacuum Truck	Hour	\$ 100.00		
or	cost plus %			
Dump Truck	Hour	\$ 75.00		
Side Dump	Hour	\$ 100.00		
Hot Oil Services				
Hot Oiler	Hour	\$ 145.00		
Propane	Gal	\$ 2.35		
Contingents				
Contingent %	Percent	10.00%		\$ 1,745.00
ESTIMATED PLUGGING COST				\$ 17,450.00
ESTIMATED TOTAL COST WITH CONTINGENT				\$ 19,195.00

Zarlengo 23-4

GL = 5187'
KB = 5196'
KB = 9.0'

API #: 05-001-09555-00
NESW Sec. 4 T1S R67W 6 PM
ADAMS COUNTY, CO
CURRENT WELLBORE DIAGRAM



SURFACE CASING

12 1/4" Hole
8 5/8" 24# @ 1355'
CMT with 880 SX
TOC @ Surface

PRODUCTION STRING

2 3/8" 4.7# J-55 8RD tubing
XN Nipple
TOTAL @ 7400'

PRODUCTION CASING

7 7/8" Hole
4 1/2" 11.6# to 8524'
CMT with 265 SX 1st STG
TOC @ 7130'
CMT with 155 SX SC
Btm 5226'
TOC @ 4690'

Niobrara - Codell Perfs

7512-7810'
240 Perfs ; Size .42 inches

Codell Perfs

7950-7970'
120 Perfs ; Size .42 inches

TD @ 8542'

Zarlengo 23-4

API #: 05-001-09555-00

NESW Sec. 4 T1S R67W 6 PM

ADAMS COUNTY, CO

P&A WELLBORE DIAGRAM

GL = 5187'

KB = 5196'

KB = 9.0'

PROPOSED PLUG/CIBPS

10 SX plug at
@ 100' to surface

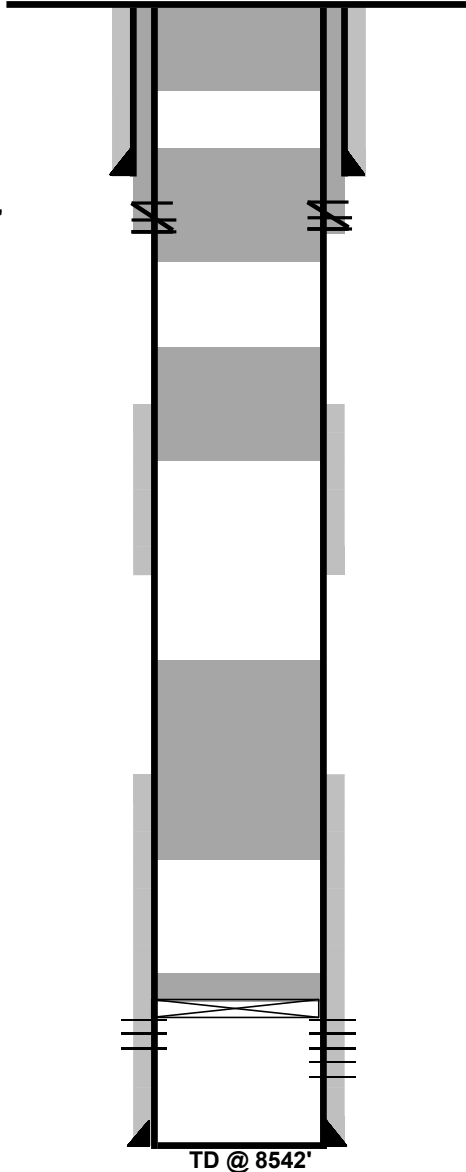
SQUEEZE PERFS AT 1395'
SQUEEZE WITH 40 SX

30 SX Plug from
1450-1250

30 SX Plug from
4650-4450

30 SX Plug from
7180-7380

Proposed
CIBP @ 7462'
w 2 SX Cement on top



SURFACE CASING

12 1/4" Hole
8 5/8" 24# @ 1355'
CMT with 880 SX
TOC @ Surface

PRODUCTION STRING

2 3/8" 4.7# J-55 8RD tubing
XN Nipple
TOTAL @ 7400'

PRODUCTION CASING

7 7/8" Hole
4 1/2" 11.6# to 8524'
CMT with 265 SX 1st STG
TOC @ 7130'
CMT with 155 SX SC
Btm 5226'
TOC @ 4690'

Niobrara - Codell Perfs
7512-7970'
240 Perfs ; Size .42 inches

PROCEDURE

- 1 MIRU. POOH Tubing while standing back.
- 2 RIH and Set CIBP at 7962'. Dump bail 2 SX cement on top.
- 3 PUH and shoot squeeze holes at 1580', 50' below surface shoe.
- 4 MIRU Cementers. RIH and set balanced plugs as per wellbore diagram.
- 5 Spot squeeze cement. Initiate circulation to surface.
- 6 Initiate surface squeeze. Hesitate.
- 7 Tag surface plug with sandline.
- 8 RDMO.
- 9 Place 10 SX cement and surface. Cut wellhead off 10' below ground level.
- # Begin surface reclamation.

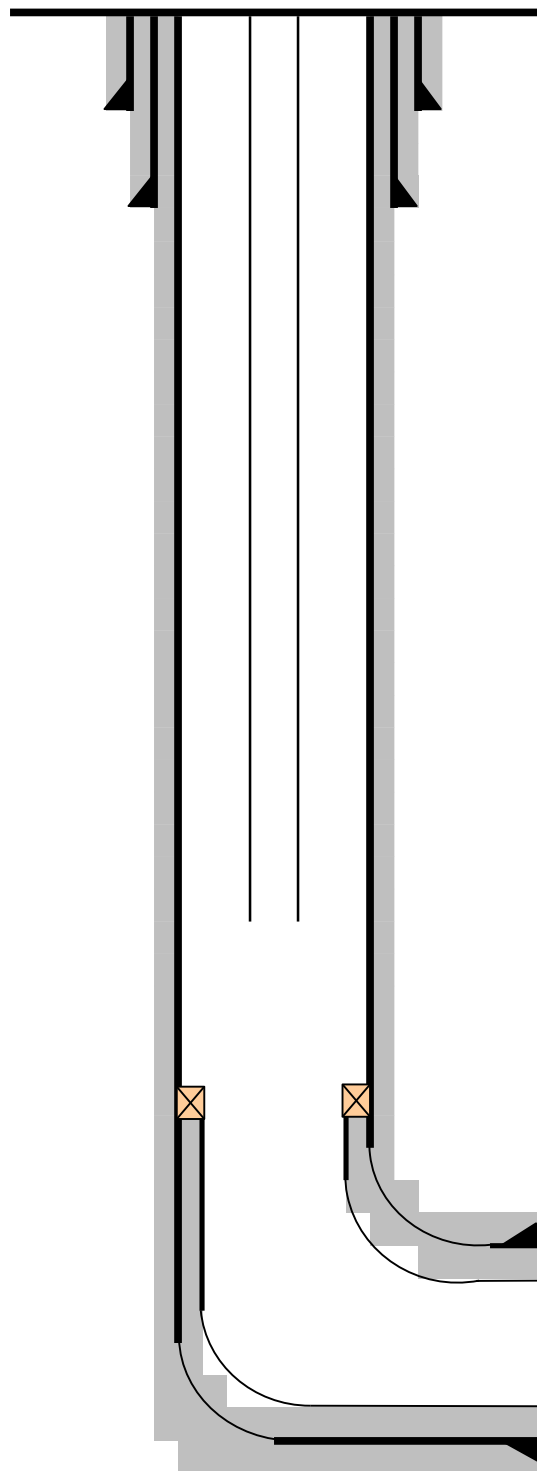
RATES AND FEES SCHEDULE OF PRICES AND QUANTITIES			COST	\$ 19,140.00
Description	Units	Quoted Price	Quantity	Total
Workover Rig Services				
Rig Charge - Operator with two person crew, Tubing Tongs, Air Slips, Swabbing tools	Hour	\$ 260.00	19	\$ 4,940.00
Extra Labor, Per Person	Hour	\$ 50.00		
Travel Time	Hour	\$ 210.00	4	\$ 840.00
Pusher	Day	\$ 750.00		
Base Beam	Day			
B.O.P.	Day	\$ 280.00	2	\$ 560.00
Wiping Rubber Tbg	well	\$ 45.00		
Wiping Rubber Rods	well	\$ 45.00		
Pump & Tank	Day	\$ 187.50	2	\$ 375.00
Power Swivel	Day	\$ 750.00		
Flange	well	\$ 40.00		
Washington Head & Rubber	Day	\$ 425.00		
Backhoe, if available	Hour	\$ 65.00		
Cement	Sack	\$ 15.00	130	\$ 1,950.00
Cement Retainer 4 1/2"	bid	\$ 673.44		
Cement Retainer 5 1/2"	bid	\$ 673.44		
Cement Retainer 7"	bid	\$ 673.44		
CIBP 4 1/2"	bid	\$ 675.00	1	\$ 675.00
CIBP 5 1/2"	bid	\$ 673.44		
CIBP 7"	bid	\$ 673.44		
Thread dope	well	\$ 50.00		
Tubing trailer	Day	\$ 100.00		
Hydrotesting 8,000'	well	\$ 1,375.00		
CBL - 8,000' to surface	well	\$ 3,000.00		
CBL - 2,000' to surface	well	\$ 1,800.00		
WL CIBP 8,000'	well	\$ 1,550.00	1	\$ 1,550.00
WL Dump Bail 2 sx	well	\$ 450.00	1	\$ 450.00
WL Squeeze hole 7,000'	well	\$ 625.00		
WL Squeeze hole 3,000'	well	\$ 750.00		
WL Squeeze hole 1,800'	well	\$ 625.00	1	\$ 625.00
or	cost plus %			
Winch Truck	Hour	\$ 135.00		
or	cost plus %			
Hydrovac	Hour			
or	cost plus %	\$ 0.15		
Disposal	BBL			
Other services - backhoe, welder, cut/cap well, skidster		\$ 1,000.00		
Wireline Set-Up	Day	\$ 1,725.00		
Cement Pumping Charge	Day	\$ 3,000.00	1	\$ 3,000.00
Frac Tank	Day	\$ 15.00		
Wireline Crew (Per Diem or Mileage)	Day	\$ 400.00		
Cement Tank	Day	\$ 200.00		
Water Hauling/Trucking				
80/100 BBL Bobtail	Hour	\$ 95.00		

80/100 BBL Bobtail Hazmat	Hour	\$ 120.00		
130/150 BBL Transport	Hour	\$ 110.00	8	\$ 880.00
130/150 BBL Transport Hazmat	Hour	\$ 135.00		
Winch Truck	Hour	\$ 115.00		
Laborer and Pickup	Hour	\$ 40.00		
Heavy Hauler Trailer	Hour	\$ 150.00		
Swamper (Laborer)	Hour	\$ 35.00		
Hydrovac	Hour	\$ 220.00		
Water per BBL	BBL	\$ 1.00	400	\$ 400.00
Solids & Liquids Disposal	BBL/CY	\$ 45.00		
Tubing Float (semi-flatbed)	Day	\$ 100.00		
Roustabout Services				
Roustabout Foreman with Truck	Hour	\$ 71.00	5	\$ 355.00
Roustabout Truck with Foreman and Trailer	Hour	\$ 96.00		
Backhoe	Hour	\$ 65.00	5	\$ 325.00
Skidsteer	Hour	\$ 45.00		
Extra Labor, Per Person	Hour	\$ 36.00		
Generator	Hour	\$ 10.00		
Mobile Steamer - Hotsy	Hour	\$ 50.00		
Welder	Hour	\$ 95.00	5	\$ 475.00
Hydrovac	Hour			
or	cost plus %	15%		
Mini excavator	Hour	\$ 55.00		
Vacuum Truck	Hour	\$ 100.00		
or	cost plus %			
Dump Truck	Hour	\$ 75.00		
Side Dump	Hour	\$ 100.00		
Hot Oil Services				
Hot Oiler	Hour	\$ 145.00		
Propane	Gal	\$ 2.35		
Contingents				
Contingent %	Percent	10.00%		\$ 1,740.00
ESTIMATED PLUGGING COST				\$ 17,400.00
ESTIMATED TOTAL COST WITH CONTINGENT				\$ 19,140.00

Newton 1-4H

GL = 4985'
 KB = 4995'
 KB = 10.0'

API #: 05-123-32780-00
 LOT 1 Sec. 4 T9N R61W 6 PM
 WELD COUNTY, CO
 CURRENT WELLBORE DIAGRAM



CONDUCTOR CASING

20" Hole
 16" 55# @ 60'
 CMT with 5 SX
 TOC @ Surface

SURFACE CASING

12 1/4" Hole
 9 5/8" 36# @ 842'
 CMT with 377 SX
 TOC @ Surface

PRODUCTION STRING

2 7/8" 6.5# J-55 8RD tubing
 Seat Nipple Notch Collar
 TOTAL @ 5920'

PRODUCTION CASING

8 3/4" Hole
 7" 20# to 6862'
 CMT with 595 SX
 TOC @ 6090

LINER

6 1/8" Hole
 4 1/2" 11.6# P-110 to 15,522
 Liner Top at 6062'

Liner Detail:

Ran 4 1/2" P-110 tbg as follows:
 4 1/2" guide shoe.
 9 jts. 4 1/2" 11.6#, P-110, BTC perf & blan
 4-1/2" Ported Float collar
 3 jts. 4 1/2" 11.6#, P-110, BTC liner
 TAM Swell Packer*
 3 jts. 4 1/2", 11.6#, P-110, BTC liner*
 Halliburton Sliding Sleeve*
 3 jts. 4 1/2", 11.6#, P-110, BTC liner*
 39 jts 4 1/2", 11.6#, P-110 buttress, BTC
 4.5 x 7" PPK Liner PKR
 5 1/4" ID x 15' PBR

*Repeated a total of 17 times
 ** 6 Plug/Perf stages after 17 sleeves
 Liner Set from: 5,921' – 15,330'

Newton 1-4H

GL = 4985'
 KB = 4995'
 KB = 10.0'

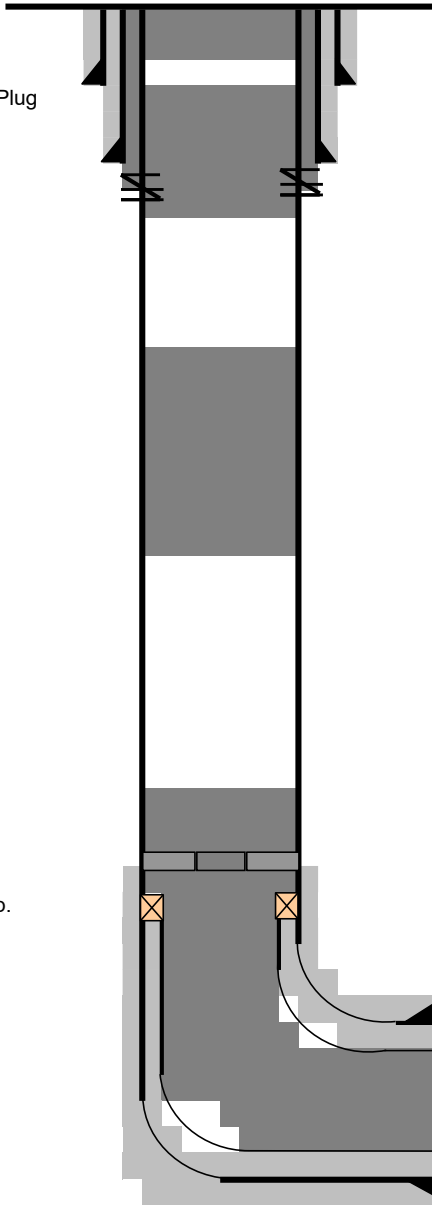
API #: 05-123-32780-00
 LOT 1 Sec. 4 T9N R61W 6 PM
 WELD COUNTY, CO
 P&A WELLBORE DIAGRAM

10 SX
 100'-surface

30 SX Balanced Plug
 952-752

30 SX Balanced
 Plug
 At 3500-3300

Retainer at 5900'
 Cement w 75 SX
 Leave 100' on top.



CONDUCTOR CASING

20" Hole
 16" 55# @ 60'
 CMT with 5 SX
 TOC @ Surface

SURFACE CASING

12 1/4" Hole
 9 5/8" 36# @ 842'
 CMT with 377 SX
 TOC @ Surface

PRODUCTION STRING

2 7/8" 6.5# J-55 8RD tubing
 Seat Nipple Notch Collar
 TOTAL @ 5920'

PRODUCTION CASING

8 3/4" Hole
 7" 20# to 6862'
 CMT with 595 SX
 TOC @ Surface

LINER

6 1/8" Hole
 4 1/2" 11.6# P-110 to 15,522
 Liner Top at 6062'

1. TOOH while standing back tubing.
2. PU and RIH with tubing set Cement Retainer.
3. Set Cement Retainer at 5900'.
4. Pump 75 SX Cement into Curve.
5. Reverse off and leave 100' of cement on retainer.
6. Set Balanced Plug at 3500-3300'
7. Perforate at 892'.
8. Established circulation and squeeze with 40 SX.
9. Spot Balance plug at 952-752'.
10. RDMO.
11. Cut and Cap. Spot 10 SX cement from 100' to surfac.
12. Begin surface rehabilitation.

Liner Detail:

Ran 4 1/2" P-110 tbg as follows:
 4 1/2" guide shoe.
 9 jts. 4 1/2" 11.6#, P-110, BTC perf & blan
 4-1/2" Ported Float collar
 3 jts. 4 1/2" 11.6#, P-110, BTC liner
 TAM Swell Packer*
 3 jts. 4 1/2", 11.6# , P-110, BTC liner*
 Halliburton Sliding Sleeve*
 3 jts. 4 1/2", 11.6# , P-110, BTC liner*
 39 jts 4 1/2", 11.6#, P-110 butress, BTC
 4.5 x 7" PPK Liner PKR
 5 1/4" ID x 15' PBR

*Repeated a total of 17 times
 ** 6 Plug/Perf stages after 17 sleeves
 Liner Set from: 5,921' - 15,330'

RATES AND FEES SCHEDULE OF PRICES AND QUANTITIES			COST	\$ 26,059.87
Description	Units	Quoted Price	Quantity	Total
Workover Rig Services				
Rig Charge - Operator with two person crew, Tubing Tongs, Air Slips, Swabbing tools	Hour	\$ 260.00	31	\$ 8,060.00
Extra Labor, Per Person	Hour	\$ 50.00		
Travel Time	Hour	\$ 210.00	6	\$ 1,260.00
Pusher	Day	\$ 750.00		
Base Beam	Day			
B.O.P.	Day	\$ 280.00	3	\$ 840.00
Wiping Rubber Tbg	well	\$ 45.00		
Wiping Rubber Rods	well	\$ 45.00		
Pump & Tank	Day	\$ 187.50	3	\$ 562.50
Power Swivel	Day	\$ 750.00		
Flange	well	\$ 40.00		
Washington Head & Rubber	Day	\$ 425.00		
Backhoe, if available	Hour	\$ 65.00		
Cement	Sack	\$ 15.00	190	\$ 2,850.00
Cement Retainer 4 1/2"	bid	\$ 673.44		
Cement Retainer 5 1/2"	bid	\$ 673.44		
Cement Retainer 7"	bid	\$ 673.44		
CIBP 4 1/2"	bid	\$ 673.44		
CIBP 5 1/2"	bid	\$ 673.44		
Retainer 7"	bid	\$ 885.29	1	\$ 885.29
Thread dope	well	\$ 50.00	2	\$ 100.00
Tubing trailer	Day	\$ 100.00		
Hydrotesting 8,000'	well	\$ 1,375.00		
CBL - 8,000' to surface	well	\$ 3,000.00		
CBL - 2,000' to surface	well	\$ 1,800.00		
WL CIBP 8,000'	well	\$ 1,550.00		
WL Dump Bail 2 sx	well	\$ 450.00		
WL Squeeze hole 7,000'	well	\$ 625.00		
WL Squeeze hole 3,000'	well	\$ 750.00		
WL Squeeze hole 1,800'	well	\$ 625.00	1	\$ 625.00
or	cost plus %			
Winch Truck	Hour	\$ 135.00		
or	cost plus %			
Hydrovac	Hour			
or	cost plus %	\$ 0.15		
Disposal	BBL			
Other services - backhoe, welder, cut/cap well, skidster		\$ 1,000.00		
Wireline Set-Up	Day	\$ 1,725.00		
Cement Pumping Charge	Day	\$ 4,500.00	1	\$ 4,500.00
Frac Tank	Day	\$ 15.00		
Wireline Crew (Per Diem or Mileage)	Day	\$ 400.00		
Cement Tank	Day	\$ 200.00		
Water Hauling/Trucking				
80/100 BBL Bobtail	Hour	\$ 95.00		

80/100 BBL Bobtail Hazmat	Hour	\$ 120.00		
130/150 BBL Transport	Hour	\$ 110.00	16	\$ 1,760.00
130/150 BBL Transport Hazmat	Hour	\$ 135.00		
Winch Truck	Hour	\$ 115.00		
Laborer and Pickup	Hour	\$ 40.00		
Heavy Hauler Trailer	Hour	\$ 150.00		
Swamper (Laborer)	Hour	\$ 35.00		
Hydrovac	Hour	\$ 220.00		
Water per BBL	BBL	\$ 1.00	400	\$ 400.00
Solids & Liquids Disposal	BBL/CY	\$ 45.00		
Tubing Float (semi-flatbed)	Day	\$ 100.00		
Roustabout Services				
Roustabout Foreman with Truck	Hour	\$ 71.00	8	\$ 568.00
Roustabout Truck with Foreman and Trailer	Hour	\$ 96.00		
Backhoe	Hour	\$ 65.00	8	\$ 520.00
Skidsteer	Hour	\$ 45.00		
Extra Labor, Per Person	Hour	\$ 36.00		
Generator	Hour	\$ 10.00		
Mobile Steamer - Hotsy	Hour	\$ 50.00		
Welder	Hour	\$ 95.00	8	\$ 760.00
Hydrovac	Hour			
or	cost plus %	15%		
Mini excavator	Hour	\$ 55.00		
Vacuum Truck	Hour	\$ 100.00		
or	cost plus %			
Dump Truck	Hour	\$ 75.00		
Side Dump	Hour	\$ 100.00		
Hot Oil Services				
Hot Oiler	Hour	\$ 145.00		
Propane	Gal	\$ 2.35		
Contingents				
Contingent %	Percent	10.00%		\$ 2,369.08
ESTIMATED PLUGGING COST				\$ 23,690.79
ESTIMATED TOTAL COST WITH CONTINGENT				\$ 26,059.87



- 7) Inventory on each consolidated battery
- 8) Surface GIS maps of the wells and consolidated tank batteries
- 9) Photos of the wells and consolidated tank batteries, including inventory on each battery.

Operator Specific Demonstrated Single Well Financial Assurance
COGCC Form 3 Supporting Documentation
February 1st 2023

Operator:
Helena Resources, Inc.

Wellhead

Consolidated Facility



Helena Resources, Inc. (HRI) is an active bidder in the COGCC OWP Plug and Abandonment (P&A) Program with extensive P&A experience

Helena Resources, Inc. was a bidder in the DIA, City of Denver P&A Program.

Helena Resources is an Experienced Operator with 18 Wells in Colorado Currently Making over 500 MSCFD and 35 BOPD in December of 2023.

Wells operated by HRI are simple, vertical wells with Consolidated Facilities, and therefore site specific abandonment costs for locations include centralized battery decommissioning and remediation.

The following maps, photos, and inventory are shown for illustrative purposes to support site specific cost analysis.



Battery Inventory

	Battery Location	Serving No. Wells	Share with	Inventory
1	AMBSUH TANK BATTERY	1		1 Seperator, 1x150, 3x300
2	SACK TANK BATTERY	1	Providence Operating	1 Seperator, 1x300
3	BREDHOFT TANK BATTERY	1		1 Seperator, 1x150, 1x300, 1x228
4	GASPAR TANK BATTERY	1		1 Seperator, 1x150, 1x300
5	ZARLENGO 2/21-4 BATTERY	2		1 Seperator, 1x300
6	ZARLENGO 23/4-24/4 BATTERY	2	Shared with KPK	1 Seperator, 1 x150, 1x300, 1x320
7	ZARLNGO 14-14 BATTERY	1		1 Seperator, 1 x150, 1x300
8	GUTHERIE TANK BATTERY	4		1 Seperator, 1x150, 2x300
9	LW MOORE TANK BATTERY	1		1 Seperator, 1x150, 2x300
10	HOUSE TANK BATTERY	1		Pump Jack, 1x300
11	NEWTON 1-4H TANK BATTERY	1		Pump Jack, 4x300, 1x320
12	UPRR BRNK TANK BATTERY	1	Shared with Renegade	1 Seperator, 1 x150, 2x300
13	RUBY TANK BATTERY	1		1 Seperator, 1x300
	TOTAL	18		



Ambush 13-22 Wellsite and Battery Inventory



Inventory

- 1 Separator
- 1x150 bbl
- 1x300 bbl

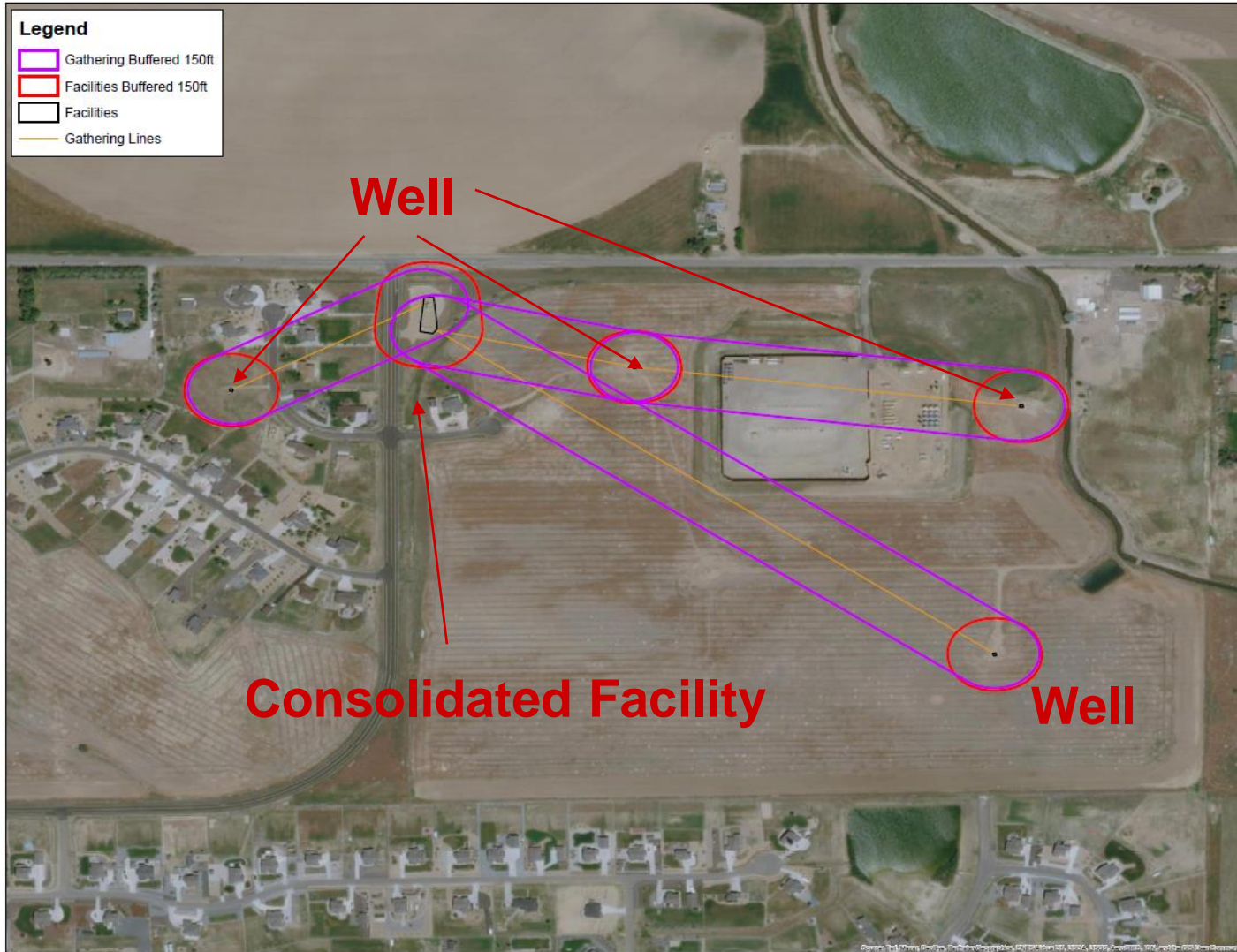




Inventory

- 1 Separator
- 1x300 bbl

Gutherie 21-2, 31-2, 41-2, 42-2 Wellsites and Consolidated Facility



Inventory

- 1 Separator
- 1x150 bbl
- 2x300 bbl

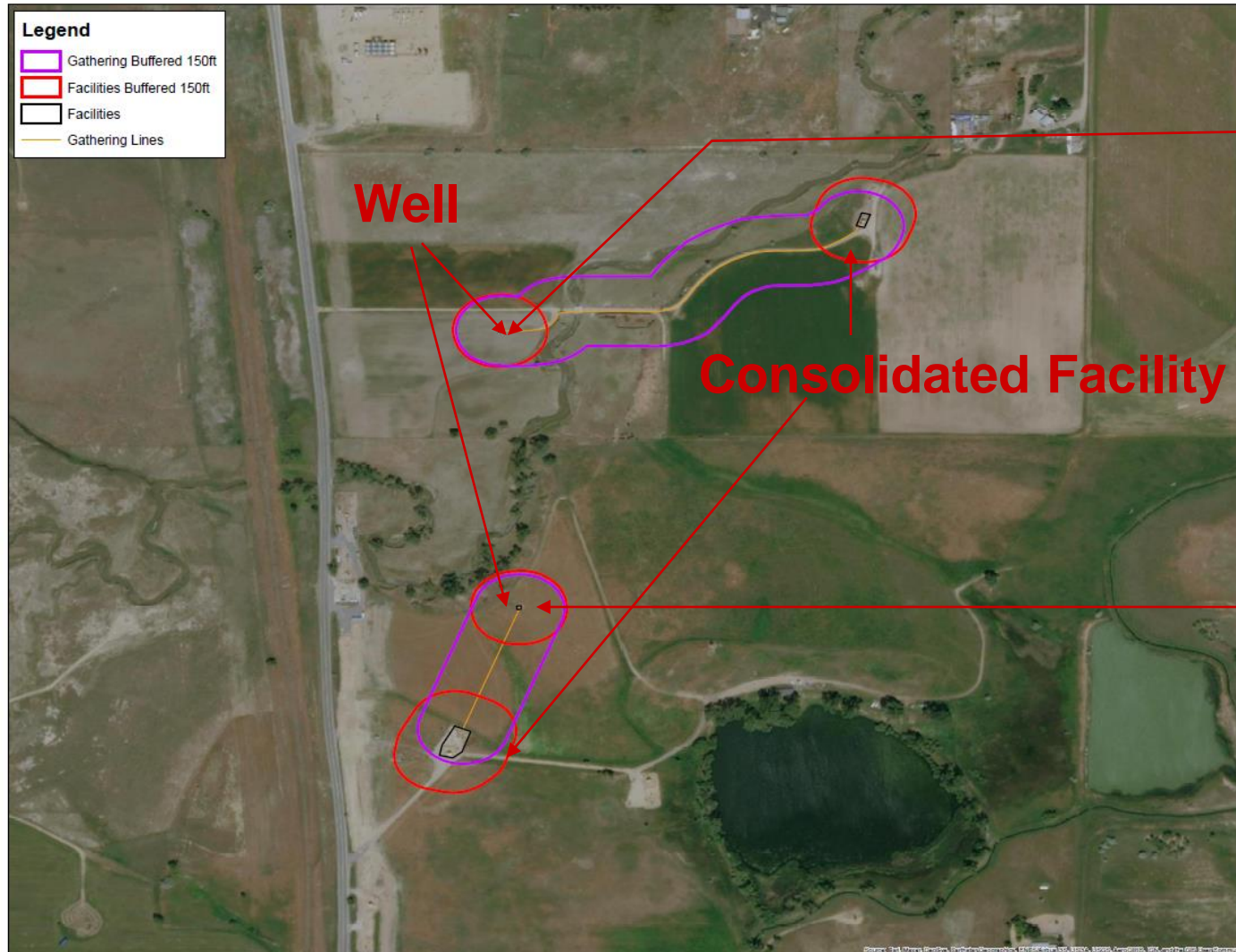
Gutherie 21-2, 22-2, 41-2, 42-2 Consolidated Tank Battery and wellheads



LW Moore Gas Unit 1 Photos



Sack 12-06
Bredehoft 13-06



Inventory

Sack

- 1 Separator
- 1x300 bbl

- Shared Location with Providence Operating

Bredehoft

- 1 Separator
- 1x300 bbl



Sack 12-06 Photos



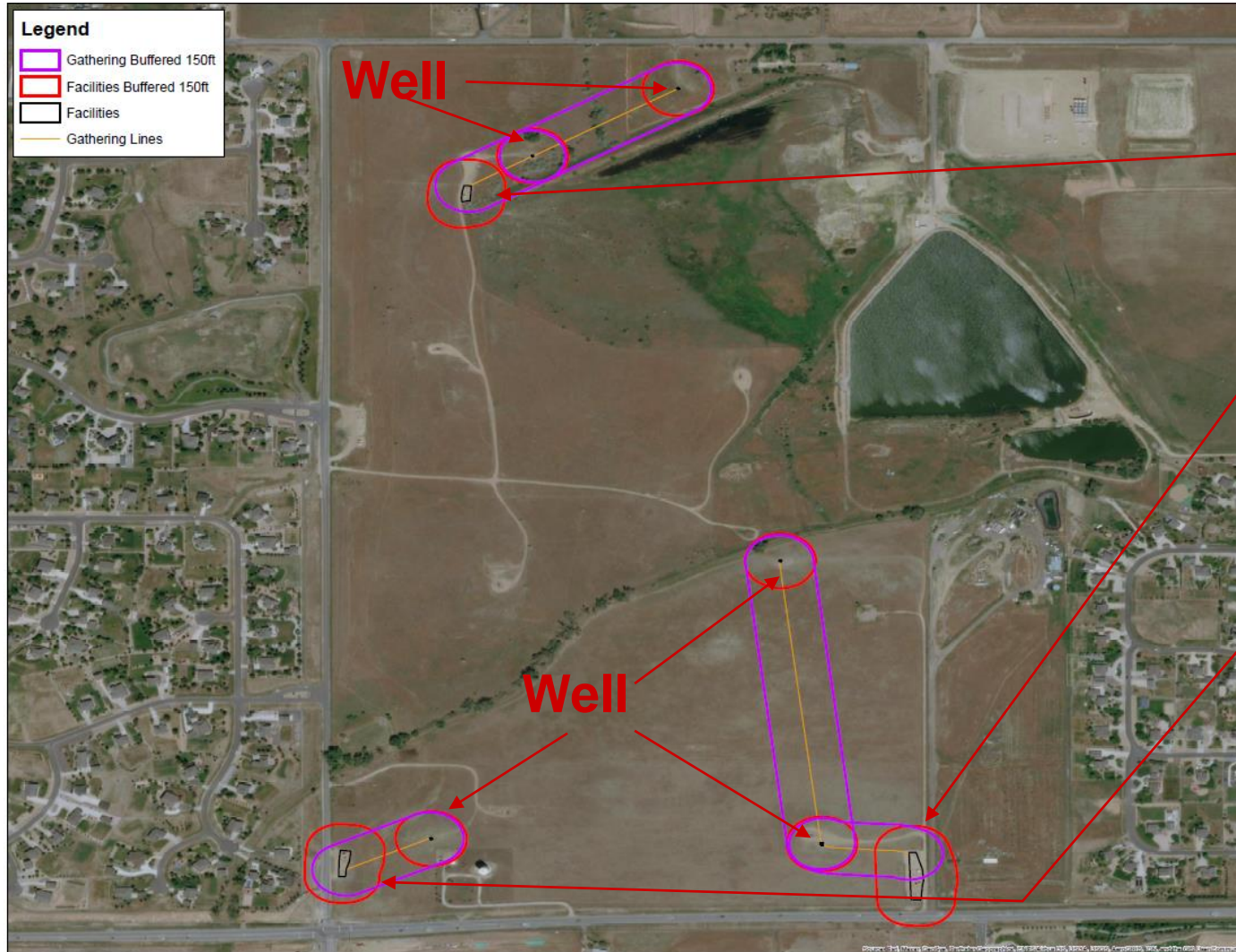
Bredehoft 13-06 Photos



Zarlengo 2, 21-4

Zarlengo 23-4, 24-4

Zarlengo 14-14



Inventory

2, 21-4

- 1 Separator
- 1x300 bbl

23-4, 24-4

- 1 Separator
- 1x150 bbl
- 1x300 bbl

Shared with
KPK

14-14

- 1 Separator
- 1x150 bbl
- 1x300 bbl

Zarlengo 2, 21-4 Photos



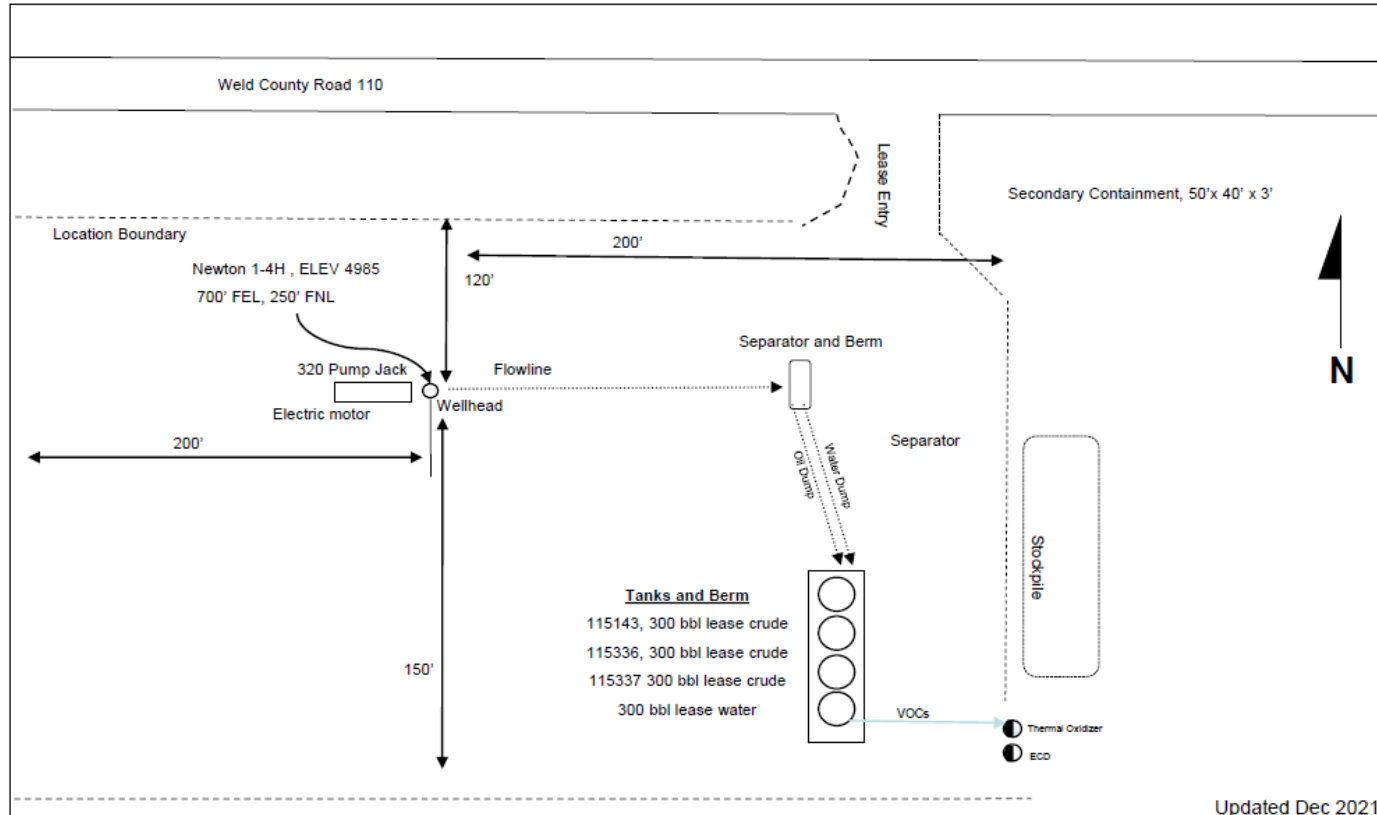
Zarlengo 24-4, and 24-4, 23-4 Shared Battery



Zarlengo 14-14 Photos

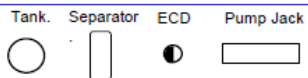


Newton 1-4H Site Security Diagram



Inventory

- 1x separator
- 4x300 bbl
- 1x320

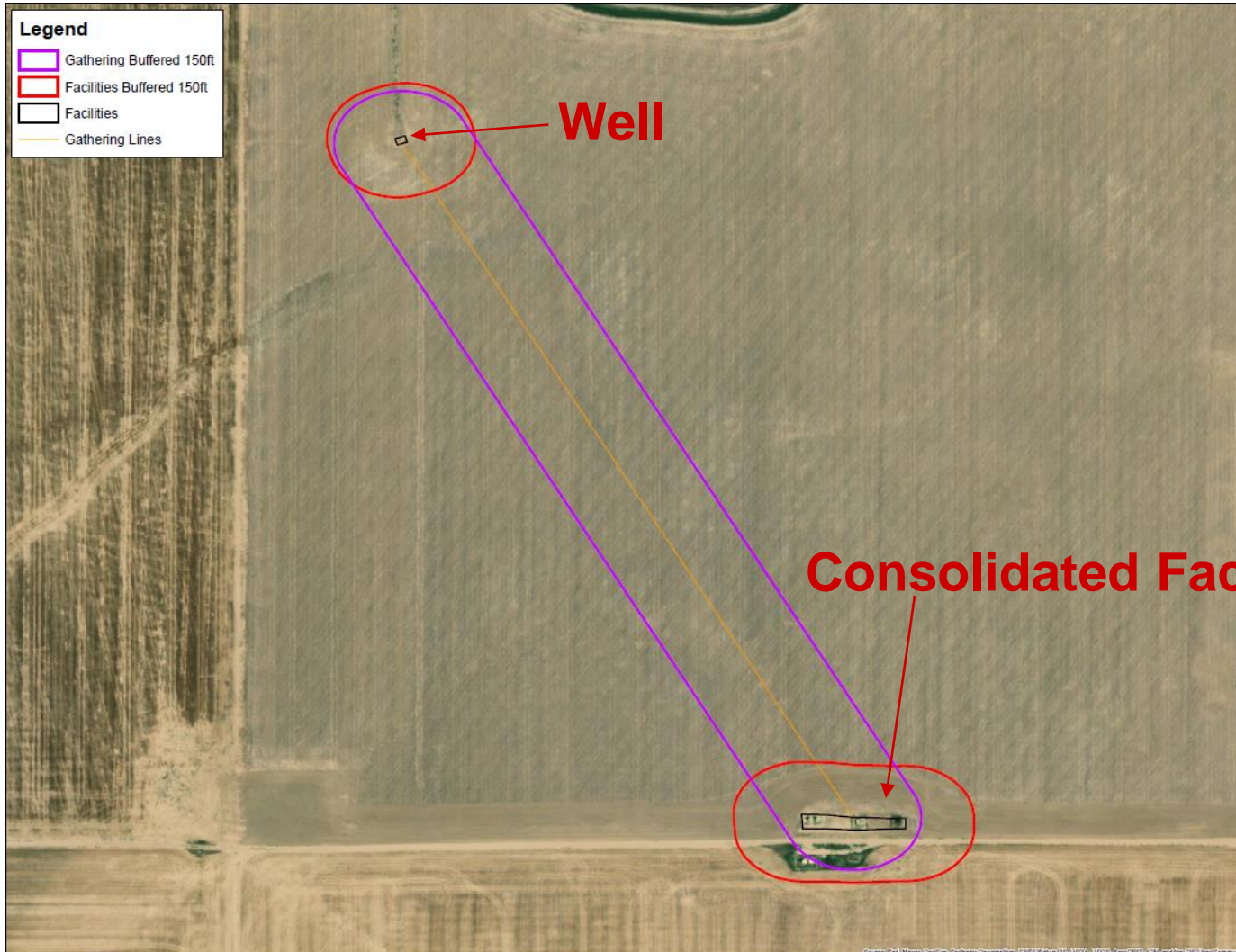


By Theodore A. Pagano, Colorado Licensed Professional Engineer
 No. PE-39826 Stamped and Certified
 On behalf of Helena Resources, Inc.



Helena Resources, Inc.
 Newton 1-4H
 NE NE 9 T9N-R61W
 40.783082 / -104.203972
 700' FEL, 250' FNL
 Weld County Road 87 and 110, East 1.8, S INTO





Inventory

- 1 Separator
- 1x150 bbl
- 1x300 bbl

- Shared Location with Renegade