

Well Latitude / Longitude:

40.285018/-104.623503

Flowline Point A (Lat / Long):

40.285012/-104.623523

Flowline Point B (Lat / Long):

40.287144/-104.627011

Flowline Length (ft):

1246

Flowline Abandonment Type:

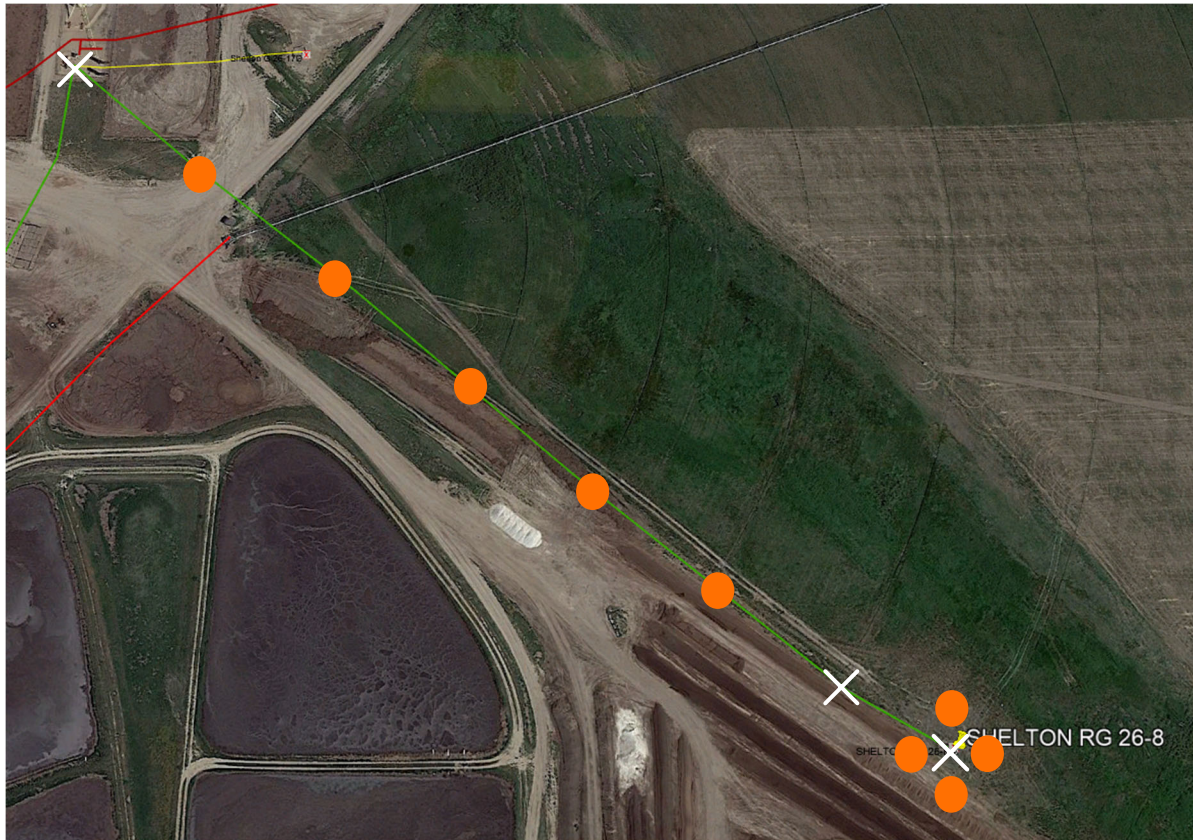
Full removal

Comments:

**X = Proposed Soil Sample Location**

**□ = Area of Conflict, Proposed  
Flowline Abandon-in-Place Area**

**● = Field Screening Location**



Map Created Date:

3-19-2023

Well Name:

SHELTON RG26-08

Map Created By:

Jeff White

Well API:

05-123-12791

**the**  
human  **energy**  
company™