

Inspection Photos

Location Name: TEP ROCKY MOUNTAIN LLC BOSELY SG 32-23 Pad

Location ID: 426123



Apr 19, 2023 at 10:37:16 AM
CO



Apr 19, 2023 at 10:37:23 AM
CO

Photo # 5702 From entrance to location

Photo # 5703 From entrance to location

Inspection Photos

Location Name: TEP ROCKY MOUNTAIN LLC BOSELY SG 32-23 Pad

Location ID: 426123



Photo # 5704 Location



Photo # 5705 Location



COLORADO
Oil & Gas Conservation
Commission
Department of Natural Resources

Inspection Photos

Location Name: TEP ROCKY MOUNTAIN LLC BOSELY SG 32-23 Pad

Location ID: 426123



Photo # 5706 Location



Photo # 5707 Open ended load line



COLORADO
Oil & Gas Conservation
Commission
Department of Natural Resources

Inspection Photos

Location Name: TEP ROCKY MOUNTAIN LLC BOSELY SG 32-23 Pad

Location ID: 426123



Photo # 5708 Open ended load lines



Photo # 5709 Open ended load line

Inspection Photos

Location Name: TEP ROCKY MOUNTAIN LLC BOSELY SG 32-23 Pad

Location ID: 426123



Photo # 5711 Open ended load line



Photo # 5714 Open ended load line



COLORADO
Oil & Gas Conservation
Commission
Department of Natural Resources

Inspection Photos

Location Name: TEP ROCKY MOUNTAIN LLC BOSELY SG 32-23 Pad

Location ID: 426123

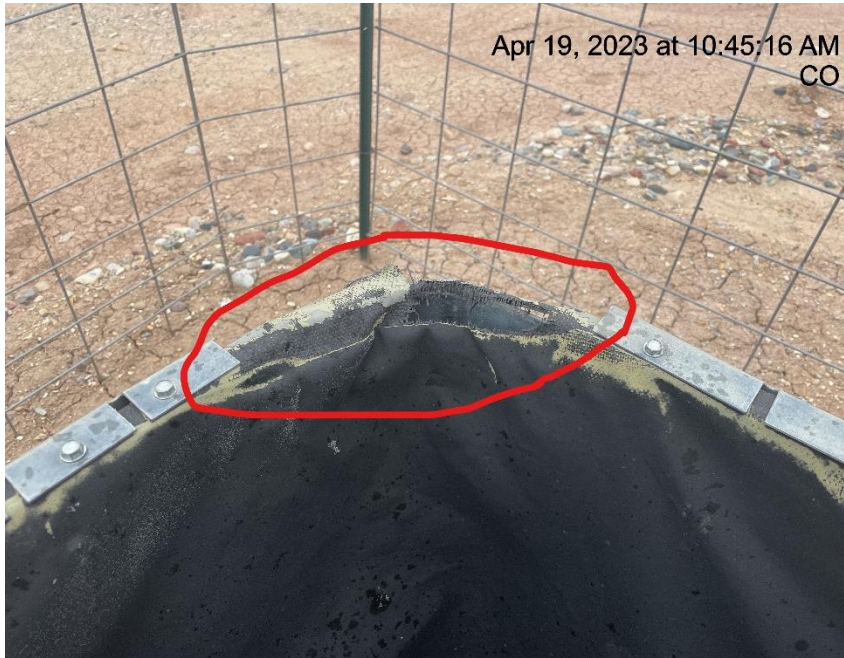


Photo # 5716 Containment liner needs maintenance



Photo # 5718 Meter calibration info not conspicuously posted

Inspection Photos

Location Name: TEP ROCKY MOUNTAIN LLC BOSELY SG 32-23 Pad

Location ID: 426123



Photo # 5719 Meter calibration info not conspicuously posted



Photo # 5729 Chemical containment full/Failure to maintain chemical BMP

Inspection Photos

Location Name: TEP ROCKY MOUNTAIN LLC BOSELY SG 32-23 Pad

Location ID: 426123



Photo # 5730 Debris



Photo # 5731 Debris

