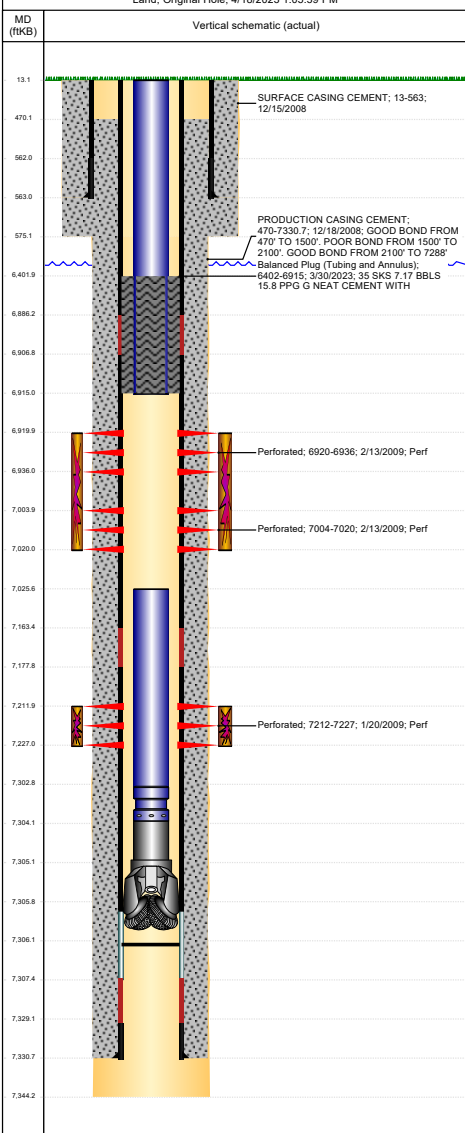




# P&A Wellbore For State

Well Name: SCHMIDT G19-24

Land, Original Hole, 4/18/2023 1:05:39 PM



Well Header									
Surface UWI 0512329208			Business Unit Rockies		Gov Auth Dist		Prod Tree Loc Land		
Orig KB to Gnd (ft) 13.00			Original Spud Date 12/15/2008		Abandon Date		Well Sub-Status TA		High Pre N
Comment 318A.e. LOCATION!									
Surface Location (Congressional)									
Quarter 3		Section 4		Township		Range		N	
NW		SE		19		4		N	
65		W		Rng E/W		Latitude (")		Longitude (")	
40.294447845						-104.705630948			
Wellbore Sections									
Section Des			Hole Size (in)			Act Top (ftKB)		Act Btm (ftKB)	
SURFACE			12 1/4			13.0		575.0	
PRODUCTION			7 7/8			575.0		7,344.0	
Casing Strings									
Csg Des			Run Date		OD (in)		Wt/Len (lb/ft)		Grade
Surface			12/15/2008		8 5/8		24.00		J-55
Production Casing			12/18/2008		4 1/2		11.60		M-80
									Top Depth (MD) (ftKB)
									Set Depth (MD) (ftKB)
									13
									563
Cement									
Des			Start Date			Top (ftKB)		Btm (ftKB)	
SURFACE CASING CEMENT			12/15/2008			13.0		563.0	
PRODUCTION CASING CEMENT			12/18/2008			470.0		7,330.7	
Balanced Plug (Tubing and Annulus)			3/30/2023			6,402.0		6,915.0	
Zone Statuses									
Zone Name		Status Date		Status		Fluid Type		Job	
CODELL		2/11/2010		PR		Water			
CODELL		3/30/2023		Closed					
NIOBRARA		3/10/2017		SI					
NIOBRARA		3/30/2023		Closed					
Perforation Data									
Linked Zone		Explosive Type		Entered Shot Total		Top (ftKB)		Btm (ftKB)	
NIOBRARA, Original Hole		A		64		6,920.0		6,936.0	
NIOBRARA, Original Hole		B		64		7,004.0		7,020.0	
CODELL, Original Hole		01		60		7,212.0		7,227.0	
Stimulation Intervals									
Zone			Start Date			Top (ftKB)		Btm (ftKB)	
NIOBRARA, Original Hole			2/24/2009			6,920.0		7,020.0	
CODELL, Original Hole			2/6/2009			7,212.0		7,227.0	
Other In Hole									
Run Date		Des			Make		OD (in)		Top (ftKB)
									Btm (ftKB)
Logs									
Date		Type					Depth Top (MD) (ftKB)		Btm (ftKB)
12/18/2008		Caliper/Comp. Density/Neutron/GR/SP/ML					2,550		7,349.0
12/18/2008		DIL/GR/SP/Caliper					562		7,349.0
1/5/2009		CBL/CCL/GR					300		7,288.0
Plug Back Total Depths									
Date		Type			Com				PBTD (ftKB)
1/5/2009		FILL			THATS 68' OF RAT HOLE				7,295
2/12/2009		FILL							7,306