

Inspection Photos

4/17/2023

Operator: LARAMIE ENERGY LLC -10433 /
BLACK HILLS PLATEAU PRODUCTION LLC -
10150

Location #312420
Mesa County, CO

Aaron Trujillo
NW Reclamation Specialist
COGCC

Operator Name: LARAMIE ENERGY

PLATEAU PRODUCTION LLC - 10150



April 17, 2023



April 17, 2023

Photo 1: Photos 1-2 taken from southwest end of the Location. Photos provide an overview of the Location from northwest, north, northeast to southeast. Photos also show that reclamation work, including by not limited to, removal of gravel/road base, compaction alleviation, recontouring/regrading and revegetation activities have not been performed on the Location. Picture insert at top shows aerial view of the Location- star represents approximate location of where photos were taken.

Inspection Photos

Operator Name: LARAMIE ENERGY LLC -10433 / BLACK HILLS PLATEAU PRODUCTION LLC - 10150

Location #312420



April 17, 2023



April 17, 2023

Photo 2: See comments under photo 1.

Operator Name: LARAMIE ENERGY

AS PLATEAU PRODUCTION LLC - 10150



Photo 3: Photos taken from the southern (fill slope) corner of the Location, facing northwest and northeast. Photos provide an overview of the Location and show reclamation work, including recontouring and regrading has not been performed on the Location. Picture insert at top shows aerial view of the Location- star represents approximate location of where photos were taken.

Inspection Photos

Operator Name: LARAMIE ENERGY LLC -10433 / BLACK HILLS PLATEAU PRODUCTION LLC - 10150

Location #312420



Photo 4: Photo shows welded plate representing the well marker left at the surface. Rules at time of plugging required permanent monuments marking well at surface was required to be a piece of pipe not less than 4 inches in diameter and not less than 10 feet in length, of which 4 feet shall be above the general ground level; monument left at surface does not comport with abandoned well marker requirements.

Operator Name: LARAMIE ENERGY

AS PLATEAU PRODUCTION LLC - 10150

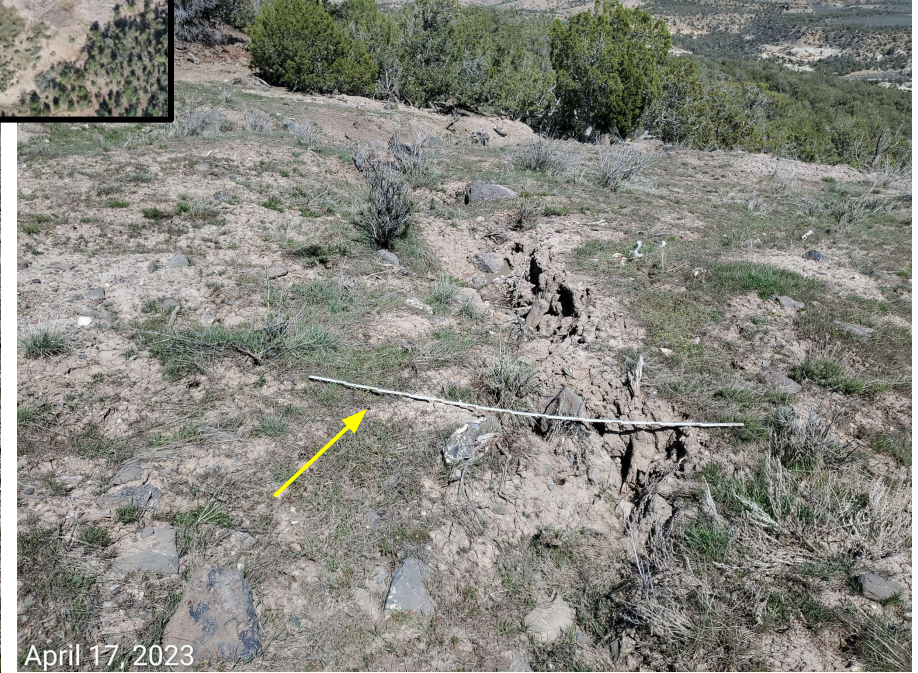


Photo 5: Photos 5-14 have been taken throughout the entire Location. Photos show stormwater management, including BMPs to minimize erosion, degradation and sediment transport remain missing or insufficient- erosion/degradation has persisted throughout the Location and access road. 6 foot measuring stick identified by yellow arrows used for reference. Picture insert at top shows aerial view of the Location- star represents approximate location of where photos were taken.

Operator Name: LARAMIE ENERGY

PLATEAU PRODUCTION LLC - 10150



April 17, 2023



April 17, 2023

Photo 6: Photos taken from the northeast end of the Location. See comments under photo 5. Picture insert at top shows aerial view of the Location- star represents approximate location of where photos were taken.

Operator Name: LARAMIE ENERGY

AS PLATEAU PRODUCTION LLC - 10150

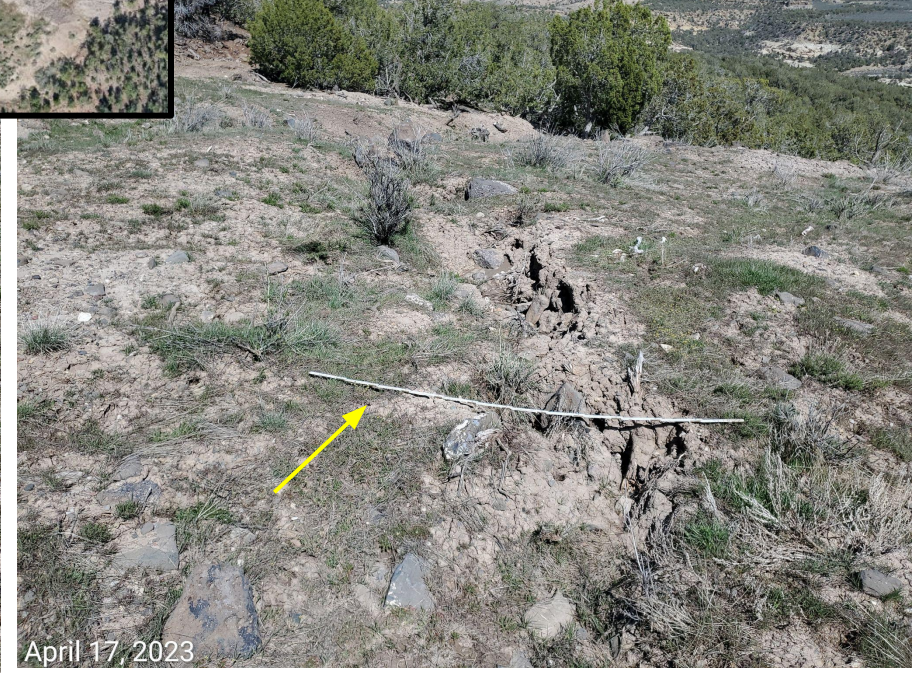


Photo 7: Photos taken from the east end (fill slope areas) of the Location. See comments under photo 5. Picture insert at top shows aerial view of the Location- star represents approximate location of where photos were taken.

Operator Name: LARAMIE ENERGY

AS PLATEAU PRODUCTION LLC - 10150



Photo 8: Photos taken from the east end (fill slope areas) of the Location. See comments under photo 5. Picture insert at top shows aerial view of the Location- star represents approximate location of where photos were taken.

Operator Name: LARAMIE ENERGY

AS PLATEAU PRODUCTION LLC - 10150



Photo 9: Photos taken from the east end (fill slope areas) of the Location. See comments under photo 5. Picture insert at top shows aerial view of the Location- star represents approximate location of where photos were taken.

Operator Name: LARAMIE ENERGY

PLATEAU PRODUCTION LLC - 10150



Photo 10: Photos taken from the cut areas adjacent to the access road, on the west end of the Location. See comments under photo 5. Picture insert at top shows aerial view of the Location- star represents approximate location of where photos were taken.

Operator Name: LARAMIE ENERGY

PLATEAU PRODUCTION LLC - 10150

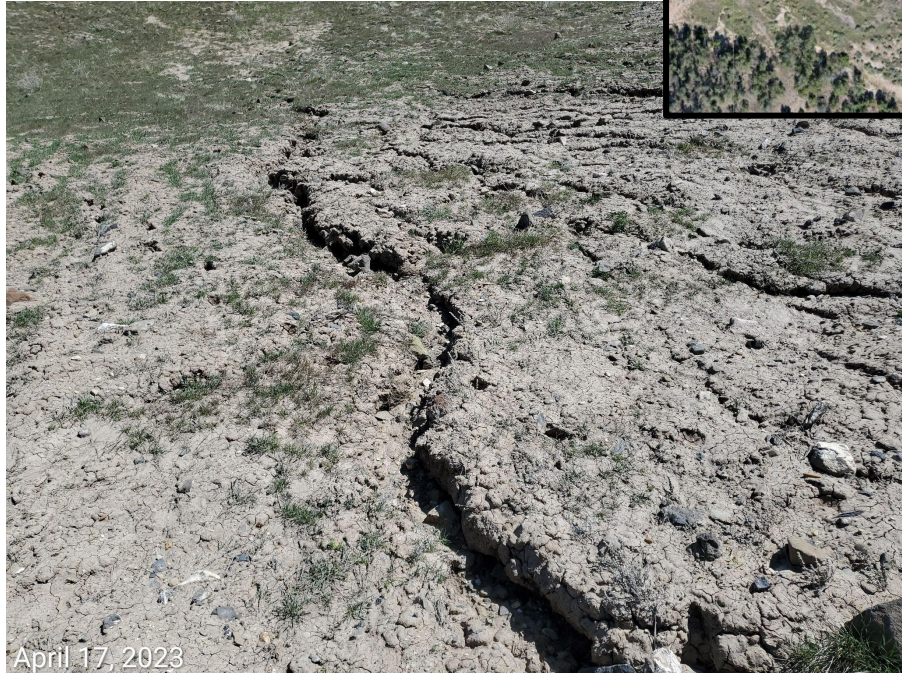


Photo 11: Photos taken from the cut areas adjacent to the access road, on the west end of the Location. See comments under photo 5. Picture insert at top shows aerial view of the Location- star represents approximate location of where photos were taken.

Operator Name: LARAMIE ENERGY

AS PLATEAU PRODUCTION LLC - 10150



Photo 12: Photo taken from the access road, and cut slope areas on the west end of the Location. See comments under photo 5. Picture insert at top shows aerial view of the Location- star represents approximate location of where photos were taken.

Operator Name: LARAMIE ENERGY

PLATEAU PRODUCTION LLC - 10150



Photo 13: Photos taken from the cut areas adjacent to the access road, on the west end of the Location. See comments under photo 5. Picture insert at top shows aerial view of the Location- star represents approximate location of where photos were taken.

Operator Name: LARAMIE ENERGY

AS PLATEAU PRODUCTION LLC - 10150



Photo 14: Photo shows cut slopes on the west end of the Location. See comments under photos 1 and 5. Picture insert at top shows aerial view of the Location- star represents approximate location of where photos were taken.

Inspection Photos

Operator Name: LARAMIE ENERGY LLC -10433 / BLACK HILLS PLATEAU PRODUCTION LLC - 10150

Location #312420



Photo 15: Photo taken from the access road leading to the Location. Photos also show that reclamation work, including by not limited to, removal of gravel/road base, compaction alleviation, recontouring/regrading and revegetation activities have not been performed on the Access Road.

Inspection Photos

Operator Name: LARAMIE ENERGY LLC -10433 / BLACK HILLS PLATEAU PRODUCTION LLC - 10150

Location #312420



Photo 16: Erosion degradation at the access road.



Photo 17: Drone aerial imagery of the Location dated 10/11/2022.

Oct 11, 2022

Inspect Set View



Photo 17: 3-D model of the Location- imagery dated 10/11/2022.



COLORADO
Oil & Gas Conservation
Commission
Department of Natural Resources