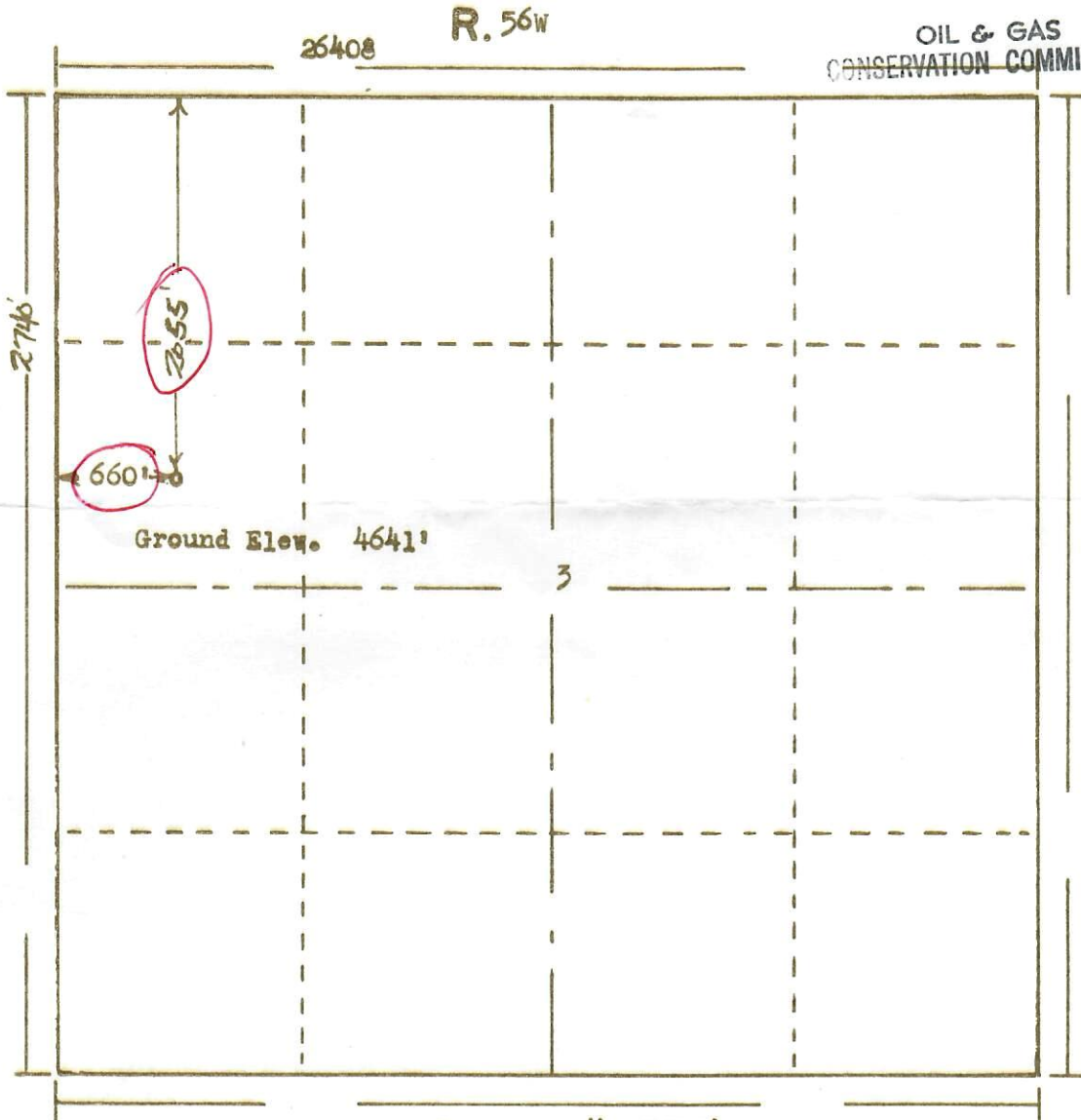




RECEIVED  
SEP 10 1965

OIL & GAS  
CONSERVATION COMMISSION



Scale ... 1" = 1000'

Powers Surveyors, Inc. of Denver, Colorado  
has in accordance with a request from Mrs. Eulich  
for Centennial Oil Company determined the  
Location of No. 1-C Pearce  
to be QSW NW Section 3 Township 38  
Range 56W of the 6th Principal Meridian  
Washington County, Colorado

I hereby certify that this plat is an  
accurate representation of a correct  
survey showing the location of

Date: 9-1-65

Betty G. Hollaway  
Licensed Land Surveyor No. 2853  
State of Colorado