

Project: Garfield County, CO
Site: BJU M23A 496 Pad
Well: BJU M23A FED 25B-23 496
Wellbore: Wellbore #1
Design: Design #3
Latitude: 39.684121
Longitude: -108.140198
Ground Level: 8104.0
RKB @ 8134.0usft (30')

PROJECT DETAILS: Garfield County, CO
Geodetic System: Universal Transverse Mercator (US Survey Feet)
Datum: NAD 1927 - Western US
Ellipsoid: Clarke 1866
Zone: Zone 12N (114 W to 108 W)
System Datum: Mean Sea Level

REFERENCE INFORMATION
Vertical (TVD) Reference: RKB @ 8134.0usft (30')
Section (VS) Reference: Slot - 25B-23(0.0N, 0.0E)
Measured Depth Reference: RKB @ 8134.0usft (30')
Calculation Method: Minimum Curvature

FORMATION TOP DETAILS

TVDPath	MDPath	Formation
3416.0	3509.7	Wasatch
5816.0	5994.8	Wasatch G
6116.0	6305.4	Fort Union
8091.0	8338.6	Ohio Creek
8450.0	8697.7	Williams Fork
11372.0	11620.5	Cameo
11872.0	12120.7	Rollins

SECTION DETAILS

MD	Inc	Azi	TVD	+N/-S	+E/-W	Diep	TFace	VSect	Annotation
0.0	0.00	0.00	0.0	0.0	0.0	0.00	0.00	0.0	
440.0	0.00	0.00	440.0	0.0	0.0	0.00	0.00	0.0	Build 3° / 100'
941.3	15.04	110.55	935.5	-23.0	61.2	3.00	110.55	65.4	EOB @ 15.04° Inc. / 110.55° Azm
7837.4	15.04	110.55	7595.5	-651.0	1736.6	0.00	0.00	1853.5	Drop 3° / 100'
8338.6	0.00	0.00	8091.0	-674.0	1797.9	3.00	180.00	1918.8	EOD @ Vertical / Build 1.5° / 100'
8428.8	1.35	250.00	8181.1	-674.4	1796.9	1.50	250.00	1918.1	EOB @ 1.35° Inc. / 250.00° Azm
12620.8	1.35	250.00	12372.0	-708.2	1703.9	0.00	0.00	1845.2	TD @ 12620.8° MD / 12372.0° TVD

DESIGN TARGET DETAILS

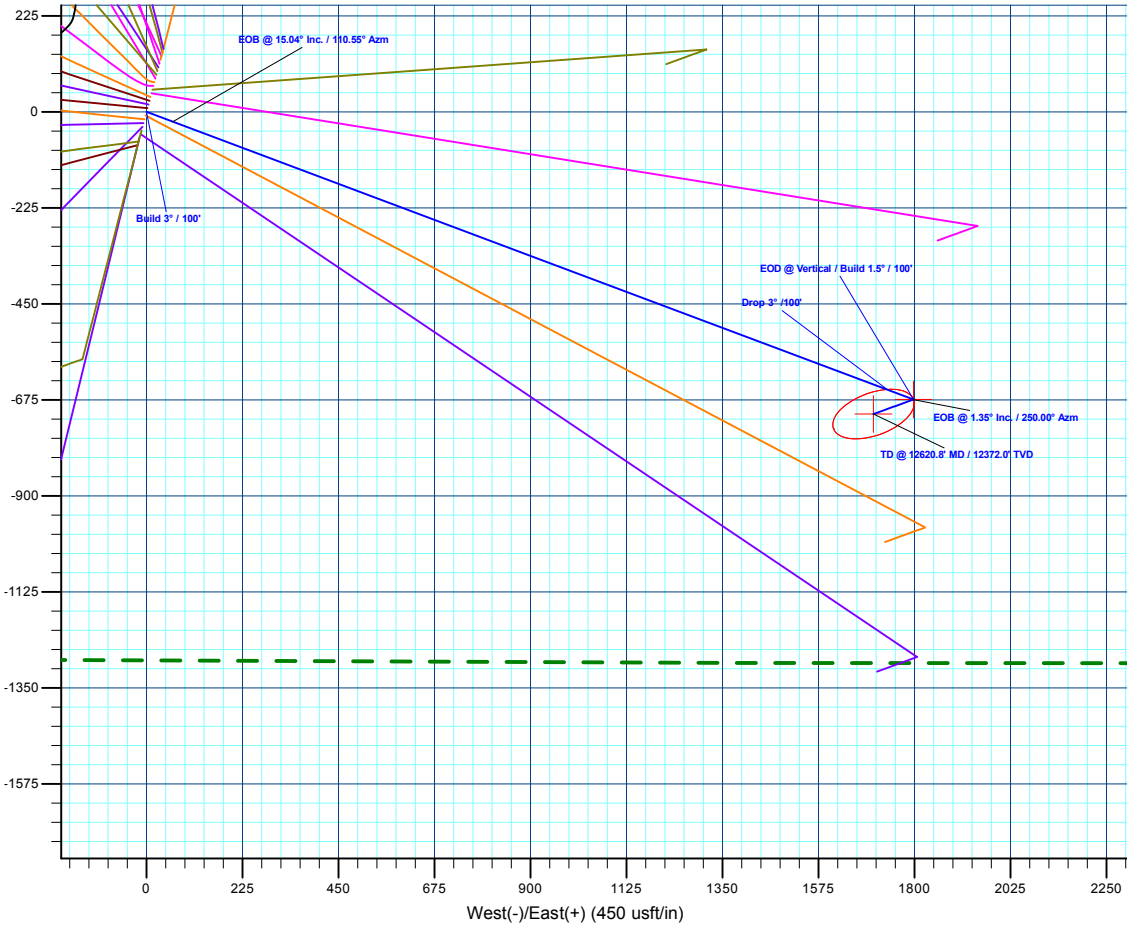
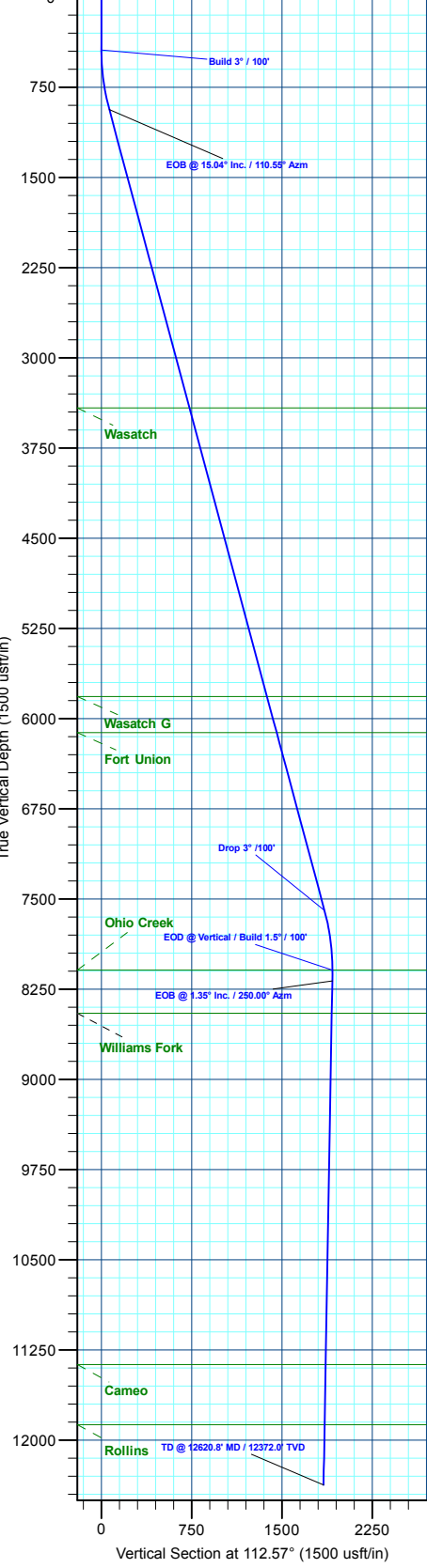
Name	TVD	+N/-S	+E/-W	Northing	Easting	Latitude	Longitude
OHCR - 25B-23	8091.0	-674.0	1797.9	14423237.98	2446886.83	39.682272	-108.133813
PBHL - 25B-23	12372.0	-708.2	1703.9	14423200.80	2446794.00	39.682178	-108.134146

WELL DETAILS: BJU M23A FED 25B-23 496

+N/-S	+E/-W	Ground Level : 8104.0	Northing	Easting	Latitude	Longitude	
0.0	0.0		14423854.30	2445068.40	39.684121	-108.140198	25B-23



Diagram showing True North (T) and Magnetic North (M) with an azimuth of 9.43°. Text: Azimuths to True North Magnetic North: 9.43° Magnetic Field Strength: 51187.3nT Dip Angle: 65.82° Date: 6/3/2020 Model: HDGM2020



Plan: Design #3 (BJU M23A FED 25B-23 496/Wellbore #1)

Created By: Will Jircik Date: 8:51, January 05 2023



Caerus Oil & Gas

Garfield County, CO

BJU M23A 496 Pad

BJU M23A FED 25B-23 496 - Slot 25B-23

Wellbore #1

Plan: Design #3

KLX Well Planning Report

05 January, 2023



Database:	EDM 5000.1 Single User Db	Local Co-ordinate Reference:	Well BJU M23A FED 25B-23 496 - Slot 25B-23
Company:	Caerus Oil & Gas	TVD Reference:	RKB @ 8134.0usft (30')
Project:	Garfield County, CO	MD Reference:	RKB @ 8134.0usft (30')
Site:	BJU M23A 496 Pad	North Reference:	True
Well:	BJU M23A FED 25B-23 496	Survey Calculation Method:	Minimum Curvature
Wellbore:	Wellbore #1		
Design:	Design #3		

Project	Garfield County, CO		
Map System:	Universal Transverse Mercator (US Survey Fee	System Datum:	Mean Sea Level
Geo Datum:	NAD 1927 - Western US		
Map Zone:	Zone 12N (114 W to 108 W)		

Site		BJU M23A 496 Pad				
Site Position:		Northing:	14,424,028.50 usft	Latitude:	39.684596	
From:	Map	Easting:	2,445,109.60 usft	Longitude:	-108.140032	
Position Uncertainty:		0.0 usft	Slot Radius:	13-3/16 "	Grid Convergence:	1.83 °

Well	BJU M23A FED 25B-23 496 - Slot 25B-23					
Well Position	+N/-S	-172.8 usft	Northing:	14,423,854.30 usft	Latitude:	39.684122
	+E/-W	-46.7 usft	Easting:	2,445,068.40 usft	Longitude:	-108.140198
Position Uncertainty		0.0 usft	Wellhead Elevation:		Ground Level:	8,104.0 usft

Wellbore	Wellbore #1				
Magnetics	Model Name	Sample Date	Declination (°)	Dip Angle (°)	Field Strength (nT)
	HDGM2020	6/3/2020	9.43	65.82	51,187.30000000

Design	Design #3				
Audit Notes:					
Version:	Phase:	PLAN	Tie On Depth:	0.0	
Vertical Section:	Depth From (TVD) (usft)	+N/-S (usft)	+E/-W (usft)	Direction (°)	
	0.0	0.0	0.0	112.57	

Plan Sections										
Measured Depth (usft)	Inclination (°)	Azimuth (°)	Vertical Depth (usft)	+N/-S (usft)	+E/-W (usft)	Dogleg Rate (°/100usft)	Build Rate (°/100usft)	Turn Rate (°/100usft)	TFO (°)	Target
0.0	0.00	0.00	0.0	0.0	0.0	0.00	0.00	0.00	0.00	
440.0	0.00	0.00	440.0	0.0	0.0	0.00	0.00	0.00	0.00	
941.3	15.04	110.55	935.5	-23.0	61.2	3.00	3.00	0.00	110.55	
7,837.4	15.04	110.55	7,595.5	-651.0	1,736.6	0.00	0.00	0.00	0.00	
8,338.6	0.00	0.00	8,091.0	-674.0	1,797.9	3.00	-3.00	0.00	180.00	OHCR - 25B-23
8,428.8	1.35	250.00	8,181.1	-674.4	1,796.9	1.50	1.50	-122.01	250.00	
12,620.8	1.35	250.00	12,372.0	-708.2	1,703.9	0.00	0.00	0.00	0.00	PBHL - 25B-23

Database:	EDM 5000.1 Single User Db	Local Co-ordinate Reference:	Well BJU M23A FED 25B-23 496 - Slot 25B-23
Company:	Caerus Oil & Gas	TVD Reference:	RKB @ 8134.0usft (30')
Project:	Garfield County, CO	MD Reference:	RKB @ 8134.0usft (30')
Site:	BJU M23A 496 Pad	North Reference:	True
Well:	BJU M23A FED 25B-23 496	Survey Calculation Method:	Minimum Curvature
Wellbore:	Wellbore #1		
Design:	Design #3		

Planned Survey										
Measured Depth (usft)	Inclination (°)	Azimuth (°)	Vertical Depth (usft)	+N/-S (usft)	+E/-W (usft)	Vertical Section (usft)	Dogleg Rate (°/100usft)	Build Rate (°/100usft)	Turn Rate (°/100usft)	
0.0	0.00	0.00	0.0	0.0	0.0	0.0	0.00	0.00	0.00	
100.0	0.00	0.00	100.0	0.0	0.0	0.0	0.00	0.00	0.00	
200.0	0.00	0.00	200.0	0.0	0.0	0.0	0.00	0.00	0.00	
300.0	0.00	0.00	300.0	0.0	0.0	0.0	0.00	0.00	0.00	
400.0	0.00	0.00	400.0	0.0	0.0	0.0	0.00	0.00	0.00	
Build 3° / 100'										
440.0	0.00	0.00	440.0	0.0	0.0	0.0	0.00	0.00	0.00	
500.0	1.80	110.55	500.0	-0.3	0.9	0.9	3.00	3.00	0.00	
600.0	4.80	110.55	599.8	-2.4	6.3	6.7	3.00	3.00	0.00	
700.0	7.80	110.55	699.2	-6.2	16.5	17.7	3.00	3.00	0.00	
800.0	10.80	110.55	797.9	-11.9	31.7	33.8	3.00	3.00	0.00	
900.0	13.80	110.55	895.6	-19.4	51.6	55.1	3.00	3.00	0.00	
EOB @ 15.04° Inc. / 110.55° Azm										
941.3	15.04	110.55	935.5	-23.0	61.2	65.4	3.00	3.00	0.00	
1,000.0	15.04	110.55	992.3	-28.3	75.5	80.6	0.00	0.00	0.00	
1,100.0	15.04	110.55	1,088.8	-37.4	99.8	106.5	0.00	0.00	0.00	
1,200.0	15.04	110.55	1,185.4	-46.5	124.1	132.5	0.00	0.00	0.00	
1,300.0	15.04	110.55	1,282.0	-55.6	148.4	158.4	0.00	0.00	0.00	
1,400.0	15.04	110.55	1,378.6	-64.7	172.7	184.3	0.00	0.00	0.00	
1,500.0	15.04	110.55	1,475.1	-73.8	197.0	210.2	0.00	0.00	0.00	
1,600.0	15.04	110.55	1,571.7	-83.0	221.3	236.2	0.00	0.00	0.00	
1,700.0	15.04	110.55	1,668.3	-92.1	245.6	262.1	0.00	0.00	0.00	
1,800.0	15.04	110.55	1,764.9	-101.2	269.9	288.0	0.00	0.00	0.00	
1,900.0	15.04	110.55	1,861.4	-110.3	294.2	314.0	0.00	0.00	0.00	
2,000.0	15.04	110.55	1,958.0	-119.4	318.5	339.9	0.00	0.00	0.00	
2,100.0	15.04	110.55	2,054.6	-128.5	342.8	365.8	0.00	0.00	0.00	
2,200.0	15.04	110.55	2,151.2	-137.6	367.0	391.7	0.00	0.00	0.00	
2,300.0	15.04	110.55	2,247.7	-146.7	391.3	417.7	0.00	0.00	0.00	
2,400.0	15.04	110.55	2,344.3	-155.8	415.6	443.6	0.00	0.00	0.00	
2,500.0	15.04	110.55	2,440.9	-164.9	439.9	469.5	0.00	0.00	0.00	
2,600.0	15.04	110.55	2,537.5	-174.0	464.2	495.5	0.00	0.00	0.00	
2,700.0	15.04	110.55	2,634.0	-183.1	488.5	521.4	0.00	0.00	0.00	
2,800.0	15.04	110.55	2,730.6	-192.2	512.8	547.3	0.00	0.00	0.00	
2,900.0	15.04	110.55	2,827.2	-201.4	537.1	573.3	0.00	0.00	0.00	
3,000.0	15.04	110.55	2,923.8	-210.5	561.4	599.2	0.00	0.00	0.00	
3,100.0	15.04	110.55	3,020.3	-219.6	585.7	625.1	0.00	0.00	0.00	
3,200.0	15.04	110.55	3,116.9	-228.7	610.0	651.0	0.00	0.00	0.00	
3,300.0	15.04	110.55	3,213.5	-237.8	634.3	677.0	0.00	0.00	0.00	
3,400.0	15.04	110.55	3,310.1	-246.9	658.6	702.9	0.00	0.00	0.00	
3,500.0	15.04	110.55	3,406.6	-256.0	682.9	728.8	0.00	0.00	0.00	
Wasatch										
3,509.7	15.04	110.55	3,416.0	-256.9	685.2	731.3	0.00	0.00	0.00	
3,600.0	15.04	110.55	3,503.2	-265.1	707.2	754.8	0.00	0.00	0.00	
3,700.0	15.04	110.55	3,599.8	-274.2	731.5	780.7	0.00	0.00	0.00	
3,800.0	15.04	110.55	3,696.4	-283.3	755.8	806.6	0.00	0.00	0.00	
3,900.0	15.04	110.55	3,792.9	-292.4	780.1	832.5	0.00	0.00	0.00	
4,000.0	15.04	110.55	3,889.5	-301.5	804.3	858.5	0.00	0.00	0.00	
4,100.0	15.04	110.55	3,986.1	-310.6	828.6	884.4	0.00	0.00	0.00	
4,200.0	15.04	110.55	4,082.7	-319.8	852.9	910.3	0.00	0.00	0.00	
4,300.0	15.04	110.55	4,179.2	-328.9	877.2	936.3	0.00	0.00	0.00	
4,400.0	15.04	110.55	4,275.8	-338.0	901.5	962.2	0.00	0.00	0.00	
4,500.0	15.04	110.55	4,372.4	-347.1	925.8	988.1	0.00	0.00	0.00	
4,600.0	15.04	110.55	4,469.0	-356.2	950.1	1,014.1	0.00	0.00	0.00	

Database:	EDM 5000.1 Single User Db	Local Co-ordinate Reference:	Well BJU M23A FED 25B-23 496 - Slot 25B-23
Company:	Caerus Oil & Gas	TVD Reference:	RKB @ 8134.0usft (30')
Project:	Garfield County, CO	MD Reference:	RKB @ 8134.0usft (30')
Site:	BJU M23A 496 Pad	North Reference:	True
Well:	BJU M23A FED 25B-23 496	Survey Calculation Method:	Minimum Curvature
Wellbore:	Wellbore #1		
Design:	Design #3		

Planned Survey									
Measured Depth (usft)	Inclination (°)	Azimuth (°)	Vertical Depth (usft)	+N/-S (usft)	+E/-W (usft)	Vertical Section (usft)	Dogleg Rate (°/100usft)	Build Rate (°/100usft)	Turn Rate (°/100usft)
4,700.0	15.04	110.55	4,565.5	-365.3	974.4	1,040.0	0.00	0.00	0.00
4,800.0	15.04	110.55	4,662.1	-374.4	998.7	1,065.9	0.00	0.00	0.00
4,900.0	15.04	110.55	4,758.7	-383.5	1,023.0	1,091.8	0.00	0.00	0.00
5,000.0	15.04	110.55	4,855.3	-392.6	1,047.3	1,117.8	0.00	0.00	0.00
5,100.0	15.04	110.55	4,951.8	-401.7	1,071.6	1,143.7	0.00	0.00	0.00
5,200.0	15.04	110.55	5,048.4	-410.8	1,095.9	1,169.6	0.00	0.00	0.00
5,300.0	15.04	110.55	5,145.0	-419.9	1,120.2	1,195.6	0.00	0.00	0.00
5,400.0	15.04	110.55	5,241.6	-429.0	1,144.5	1,221.5	0.00	0.00	0.00
5,500.0	15.04	110.55	5,338.2	-438.2	1,168.8	1,247.4	0.00	0.00	0.00
5,600.0	15.04	110.55	5,434.7	-447.3	1,193.1	1,273.3	0.00	0.00	0.00
5,700.0	15.04	110.55	5,531.3	-456.4	1,217.4	1,299.3	0.00	0.00	0.00
5,800.0	15.04	110.55	5,627.9	-465.5	1,241.6	1,325.2	0.00	0.00	0.00
5,900.0	15.04	110.55	5,724.5	-474.6	1,265.9	1,351.1	0.00	0.00	0.00
Wasatch G									
5,994.8	15.04	110.55	5,816.0	-483.2	1,289.0	1,375.7	0.00	0.00	0.00
6,000.0	15.04	110.55	5,821.0	-483.7	1,290.2	1,377.1	0.00	0.00	0.00
6,100.0	15.04	110.55	5,917.6	-492.8	1,314.5	1,403.0	0.00	0.00	0.00
6,200.0	15.04	110.55	6,014.2	-501.9	1,338.8	1,428.9	0.00	0.00	0.00
6,300.0	15.04	110.55	6,110.8	-511.0	1,363.1	1,454.9	0.00	0.00	0.00
Fort Union									
6,305.4	15.04	110.55	6,116.0	-511.5	1,364.4	1,456.3	0.00	0.00	0.00
6,400.0	15.04	110.55	6,207.3	-520.1	1,387.4	1,480.8	0.00	0.00	0.00
6,500.0	15.04	110.55	6,303.9	-529.2	1,411.7	1,506.7	0.00	0.00	0.00
6,600.0	15.04	110.55	6,400.5	-538.3	1,436.0	1,532.6	0.00	0.00	0.00
6,700.0	15.04	110.55	6,497.1	-547.4	1,460.3	1,558.6	0.00	0.00	0.00
6,800.0	15.04	110.55	6,593.6	-556.5	1,484.6	1,584.5	0.00	0.00	0.00
6,900.0	15.04	110.55	6,690.2	-565.7	1,508.9	1,610.4	0.00	0.00	0.00
7,000.0	15.04	110.55	6,786.8	-574.8	1,533.2	1,636.4	0.00	0.00	0.00
7,100.0	15.04	110.55	6,883.4	-583.9	1,557.5	1,662.3	0.00	0.00	0.00
7,200.0	15.04	110.55	6,979.9	-593.0	1,581.8	1,688.2	0.00	0.00	0.00
7,300.0	15.04	110.55	7,076.5	-602.1	1,606.1	1,714.1	0.00	0.00	0.00
7,400.0	15.04	110.55	7,173.1	-611.2	1,630.4	1,740.1	0.00	0.00	0.00
7,500.0	15.04	110.55	7,269.7	-620.3	1,654.7	1,766.0	0.00	0.00	0.00
7,600.0	15.04	110.55	7,366.2	-629.4	1,678.9	1,791.9	0.00	0.00	0.00
7,700.0	15.04	110.55	7,462.8	-638.5	1,703.2	1,817.9	0.00	0.00	0.00
7,800.0	15.04	110.55	7,559.4	-647.6	1,727.5	1,843.8	0.00	0.00	0.00
Drop 3° /100'									
7,837.4	15.04	110.55	7,595.5	-651.0	1,736.6	1,853.5	0.00	0.00	0.00
7,900.0	13.16	110.55	7,656.2	-656.4	1,750.9	1,868.7	3.00	-3.00	0.00
8,000.0	10.16	110.55	7,754.1	-663.5	1,769.8	1,888.9	3.00	-3.00	0.00
8,100.0	7.16	110.55	7,853.0	-668.8	1,783.9	1,904.0	3.00	-3.00	0.00
8,200.0	4.16	110.55	7,952.5	-672.2	1,793.1	1,913.8	3.00	-3.00	0.00
8,300.0	1.16	110.55	8,052.4	-673.8	1,797.5	1,918.5	3.00	-3.00	0.00
EOD @ Vertical / Build 1.5° / 100' - Ohio Creek									
8,338.6	0.00	0.00	8,091.0	-674.0	1,797.9	1,918.8	3.00	-3.00	0.00
8,400.0	0.92	250.00	8,152.4	-674.2	1,797.4	1,918.5	1.50	1.50	0.00
EOB @ 1.35° Inc. / 250.00° Azm									
8,428.8	1.35	250.00	8,181.1	-674.4	1,796.9	1,918.1	1.50	1.50	0.00
8,500.0	1.35	250.00	8,252.3	-674.9	1,795.3	1,916.8	0.00	0.00	0.00
8,600.0	1.35	250.00	8,352.3	-675.7	1,793.1	1,915.1	0.00	0.00	0.00
Williams Fork									
8,697.7	1.35	250.00	8,450.0	-676.5	1,790.9	1,913.4	0.00	0.00	0.00

Database:	EDM 5000.1 Single User Db	Local Co-ordinate Reference:	Well BJU M23A FED 25B-23 496 - Slot 25B-23
Company:	Caerus Oil & Gas	TVD Reference:	RKB @ 8134.0usft (30')
Project:	Garfield County, CO	MD Reference:	RKB @ 8134.0usft (30')
Site:	BJU M23A 496 Pad	North Reference:	True
Well:	BJU M23A FED 25B-23 496	Survey Calculation Method:	Minimum Curvature
Wellbore:	Wellbore #1		
Design:	Design #3		

Planned Survey

Measured Depth (usft)	Inclination (°)	Azimuth (°)	Vertical Depth (usft)	+N/-S (usft)	+E/-W (usft)	Vertical Section (usft)	Dogleg Rate (°/100usft)	Build Rate (°/100usft)	Turn Rate (°/100usft)
8,700.0	1.35	250.00	8,452.3	-676.5	1,790.8	1,913.3	0.00	0.00	0.00
8,800.0	1.35	250.00	8,552.3	-677.3	1,788.6	1,911.6	0.00	0.00	0.00
8,900.0	1.35	250.00	8,652.2	-678.2	1,786.4	1,909.9	0.00	0.00	0.00
9,000.0	1.35	250.00	8,752.2	-679.0	1,784.2	1,908.1	0.00	0.00	0.00
9,100.0	1.35	250.00	8,852.2	-679.8	1,782.0	1,906.4	0.00	0.00	0.00
9,200.0	1.35	250.00	8,952.2	-680.6	1,779.8	1,904.7	0.00	0.00	0.00
9,300.0	1.35	250.00	9,052.1	-681.4	1,777.5	1,902.9	0.00	0.00	0.00
9,400.0	1.35	250.00	9,152.1	-682.2	1,775.3	1,901.2	0.00	0.00	0.00
9,500.0	1.35	250.00	9,252.1	-683.0	1,773.1	1,899.4	0.00	0.00	0.00
9,600.0	1.35	250.00	9,352.0	-683.8	1,770.9	1,897.7	0.00	0.00	0.00
9,700.0	1.35	250.00	9,452.0	-684.6	1,768.7	1,896.0	0.00	0.00	0.00
9,800.0	1.35	250.00	9,552.0	-685.4	1,766.4	1,894.2	0.00	0.00	0.00
9,900.0	1.35	250.00	9,652.0	-686.2	1,764.2	1,892.5	0.00	0.00	0.00
10,000.0	1.35	250.00	9,751.9	-687.0	1,762.0	1,890.8	0.00	0.00	0.00
10,100.0	1.35	250.00	9,851.9	-687.8	1,759.8	1,889.0	0.00	0.00	0.00
10,200.0	1.35	250.00	9,951.9	-688.6	1,757.6	1,887.3	0.00	0.00	0.00
10,300.0	1.35	250.00	10,051.8	-689.5	1,755.4	1,885.5	0.00	0.00	0.00
10,400.0	1.35	250.00	10,151.8	-690.3	1,753.1	1,883.8	0.00	0.00	0.00
10,500.0	1.35	250.00	10,251.8	-691.1	1,750.9	1,882.1	0.00	0.00	0.00
10,600.0	1.35	250.00	10,351.8	-691.9	1,748.7	1,880.3	0.00	0.00	0.00
10,700.0	1.35	250.00	10,451.7	-692.7	1,746.5	1,878.6	0.00	0.00	0.00
10,800.0	1.35	250.00	10,551.7	-693.5	1,744.3	1,876.8	0.00	0.00	0.00
10,900.0	1.35	250.00	10,651.7	-694.3	1,742.0	1,875.1	0.00	0.00	0.00
11,000.0	1.35	250.00	10,751.6	-695.1	1,739.8	1,873.4	0.00	0.00	0.00
11,100.0	1.35	250.00	10,851.6	-695.9	1,737.6	1,871.6	0.00	0.00	0.00
11,200.0	1.35	250.00	10,951.6	-696.7	1,735.4	1,869.9	0.00	0.00	0.00
11,300.0	1.35	250.00	11,051.6	-697.5	1,733.2	1,868.2	0.00	0.00	0.00
11,400.0	1.35	250.00	11,151.5	-698.3	1,731.0	1,866.4	0.00	0.00	0.00
11,500.0	1.35	250.00	11,251.5	-699.1	1,728.7	1,864.7	0.00	0.00	0.00
11,600.0	1.35	250.00	11,351.5	-699.9	1,726.5	1,862.9	0.00	0.00	0.00
Cameo									
11,620.5	1.35	250.00	11,372.0	-700.1	1,726.1	1,862.6	0.00	0.00	0.00
11,700.0	1.35	250.00	11,451.5	-700.8	1,724.3	1,861.2	0.00	0.00	0.00
11,800.0	1.35	250.00	11,551.4	-701.6	1,722.1	1,859.5	0.00	0.00	0.00
11,900.0	1.35	250.00	11,651.4	-702.4	1,719.9	1,857.7	0.00	0.00	0.00
12,000.0	1.35	250.00	11,751.4	-703.2	1,717.7	1,856.0	0.00	0.00	0.00
12,100.0	1.35	250.00	11,851.3	-704.0	1,715.4	1,854.3	0.00	0.00	0.00
Rollins									
12,120.7	1.35	250.00	11,872.0	-704.2	1,715.0	1,853.9	0.00	0.00	0.00
12,200.0	1.35	250.00	11,951.3	-704.8	1,713.2	1,852.5	0.00	0.00	0.00
12,300.0	1.35	250.00	12,051.3	-705.6	1,711.0	1,850.8	0.00	0.00	0.00
12,400.0	1.35	250.00	12,151.3	-706.4	1,708.8	1,849.0	0.00	0.00	0.00
12,500.0	1.35	250.00	12,251.2	-707.2	1,706.6	1,847.3	0.00	0.00	0.00
12,600.0	1.35	250.00	12,351.2	-708.0	1,704.3	1,845.6	0.00	0.00	0.00
TD @ 12620.8' MD / 12372.0' TVD									
12,620.8	1.35	250.00	12,372.0	-708.2	1,703.9	1,845.2	0.00	0.00	0.00

Database:	EDM 5000.1 Single User Db	Local Co-ordinate Reference:	Well BJU M23A FED 25B-23 496 - Slot 25B-23
Company:	Caerus Oil & Gas	TVD Reference:	RKB @ 8134.0usft (30')
Project:	Garfield County, CO	MD Reference:	RKB @ 8134.0usft (30')
Site:	BJU M23A 496 Pad	North Reference:	True
Well:	BJU M23A FED 25B-23 496	Survey Calculation Method:	Minimum Curvature
Wellbore:	Wellbore #1		
Design:	Design #3		

Design Targets

Target Name - hit/miss target - Shape	Dip Angle (°)	Dip Dir. (°)	TVD (usft)	+N/-S (usft)	+E/-W (usft)	Northing (usft)	Easting (usft)	Latitude	Longitude
OHCR - 25B-23 - plan hits target center - Point	0.00	0.00	8,091.0	-674.0	1,797.9	14,423,237.98	2,446,886.83	39.682272	-108.133813
PBHL - 25B-23 - plan hits target center - Ellipse (radii L100.0 W50.0 on 250.00 azi)	0.00	0.00	12,372.0	-708.2	1,703.9	14,423,200.80	2,446,794.00	39.682178	-108.134147

Formations

Measured Depth (usft)	Vertical Depth (usft)	Name	Lithology	Dip (°)	Dip Direction (°)
3,509.7	3,416.0	Wasatch			
5,994.8	5,816.0	Wasatch G			
6,305.4	6,116.0	Fort Union			
8,338.6	8,091.0	Ohio Creek			
8,697.7	8,450.0	Williams Fork			
11,620.5	11,372.0	Cameo			
12,120.7	11,872.0	Rollins			

Plan Annotations

Measured Depth (usft)	Vertical Depth (usft)	Local Coordinates		Comment
		+N/-S (usft)	+E/-W (usft)	
440.0	440.0	0.0	0.0	Build 3° / 100'
941.3	935.5	-23.0	61.2	EOB @ 15.04° Inc. / 110.55° Azm
7,837.4	7,595.5	-651.0	1,736.6	Drop 3° / 100'
8,338.6	8,091.0	-674.0	1,797.9	EOD @ Vertical / Build 1.5° / 100'
8,428.8	8,181.1	-674.4	1,796.9	EOB @ 1.35° Inc. / 250.00° Azm
12,620.8	12,372.0	-708.2	1,703.9	TD @ 12620.8' MD / 12372.0' TVD