

Project: Garfield County, CO  
 Site: BJU M23A 496 Pad  
 Well: BJU M23A FED 24B-22 496  
 Wellbore: Wellbore #1  
 Design: Design #3  
 Latitude: 39.684217  
 Longitude: -108.140164  
 Ground Level: 8104.0  
 RKB @ 8134.0usft (30')

# PROJECT DETAILS: Garfield County, CO

Geodetic System: Universal Transverse Mercator (US Survey Feet)  
 Datum: NAD 1927 - Western US  
 Ellipsoid: Clarke 1866  
 Zone: Zone 12N (114 W to 108 W)  
 System Datum: Mean Sea Level

## REFERENCE INFORMATION

Vertical (TVD) Reference: RKB @ 8134.0usft (30')  
 Section (VS) Reference: Slot - 24B-22(0.0N, 0.0E)  
 Measured Depth Reference: RKB @ 8134.0usft (30')  
 Calculation Method: Minimum Curvature

## SECTION DETAILS

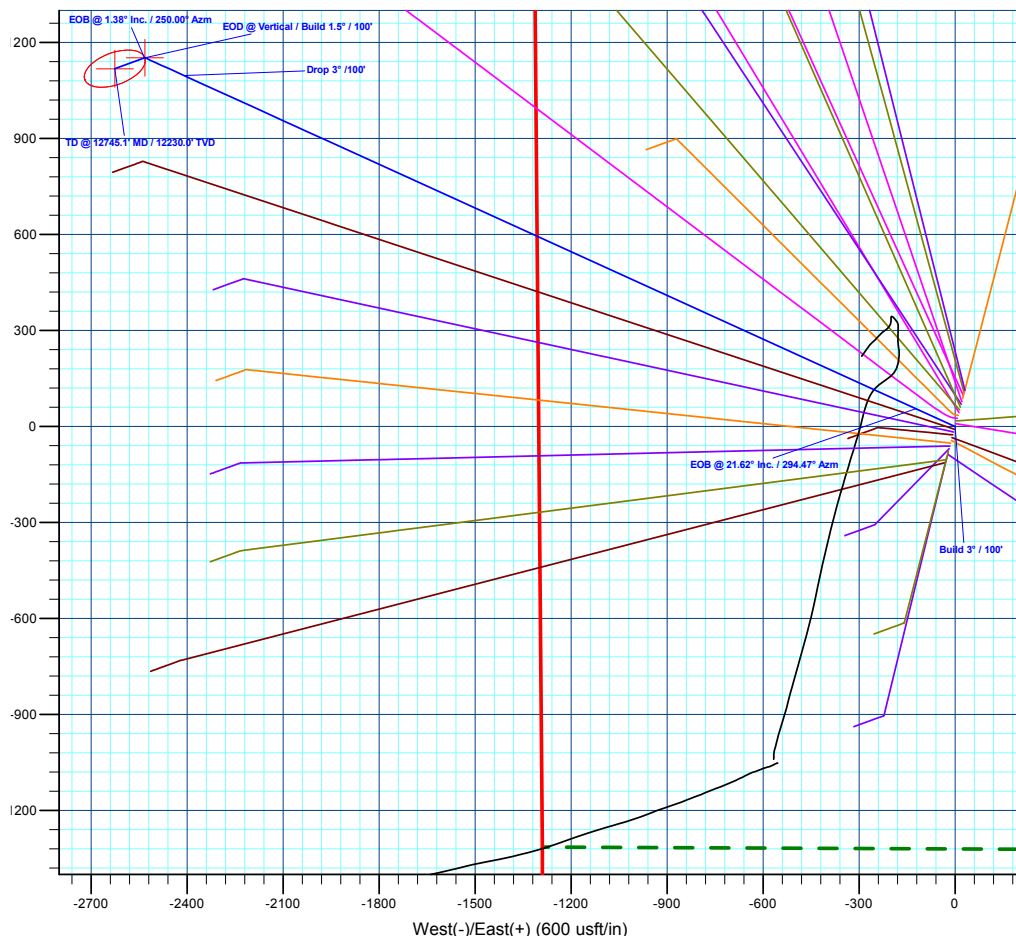
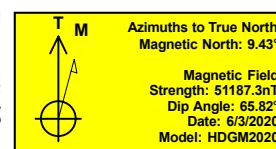
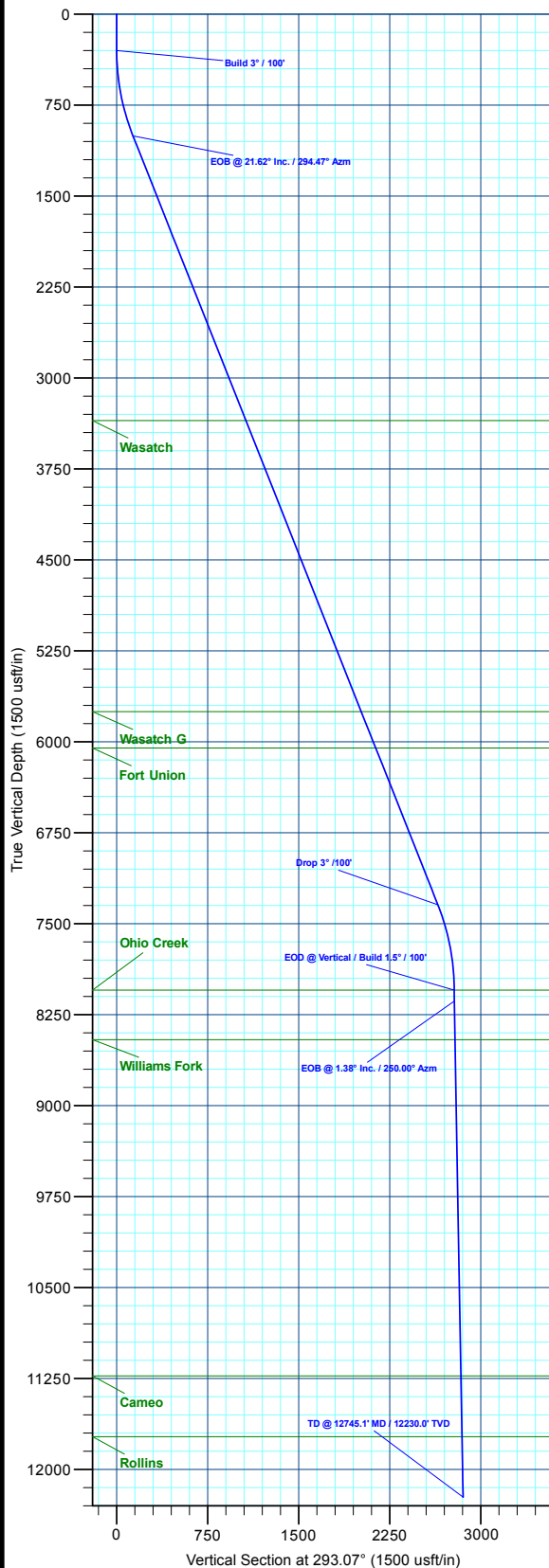
MD	Inc	Azi	TVD	+N/-S	+E/-W	Dleg	TFace	VSect	Annotation
0.0	0.00	0.00	0.0	0.0	0.0	0.00	0.00	0.0	
300.0	0.00	0.00	300.0	0.0	0.0	0.00	0.00	0.0	Build 3" / 100'
1020.7	21.62	294.47	1003.7	55.7	-122.3	3.00	294.47	134.3	EOB @ 21.62° Inc. / 294.47° Azm
7841.2	21.62	294.47	7344.3	1096.7	-2409.7	0.00	0.00	2646.7	Drop 3" / 100'
8561.9	0.00	0.00	8048.0	1152.4	-2532.0	3.00	180.00	2781.1	EOD @ Vertical / Build 1.5" / 100'
8654.2	1.39	250.00	8140.3	1152.0	-2533.1	1.50	250.00	2781.9	EOB @ 1.38° Inc. / 250.00° Azm
12745.1	1.39	250.00	12230.0	1118.2	-2626.0	0.00	0.00	2854.1	TD @ 12745.1' MD / 12230.0' TVD

## DESIGN TARGET DETAILS

Name	TVD	+N/-S	+E/-W	Northing	Easting	Latitude	Longitude
OHCR - 24B-22	8048.0	1152.4	-2532.0	14424960.38	2442509.23	39.687379	-108.149158
PBHL - 24B-22	12230.0	1118.2	-2626.0	14424923.20	2442416.40	39.687285	-108.149492

## WELL DETAILS: BJU M23A FED 24B-22 496

+N/-S	+E/-W	Ground Level : 8104.0	Northing	Easting	Latitude	Longitude
0.0	0.0		14423889.30	2445076.70	39.684217	-108.140164
						24B-22



Plan: Design #3 (BJU M23A FED 24B-22 496/Wellbore #1)

Created By: Will Jircik

Date: 4:39, January 05 2023



## **Caerus Oil & Gas**

**Garfield County, CO**

**BJU M23A 496 Pad**

**BJU M23A FED 24B-22 496 - Slot 24B-22**

**Wellbore #1**

**Plan: Design #3**

## **KLX Well Planning Report**

**05 January, 2023**



<b>Database:</b>	EDM 5000.1 Single User Db	<b>Local Co-ordinate Reference:</b>	Well BJU M23A FED 24B-22 496 - Slot 24B-22
<b>Company:</b>	Caerus Oil & Gas	<b>TVD Reference:</b>	RKB @ 8134.0usft (30')
<b>Project:</b>	Garfield County, CO	<b>MD Reference:</b>	RKB @ 8134.0usft (30')
<b>Site:</b>	BJU M23A 496 Pad	<b>North Reference:</b>	True
<b>Well:</b>	BJU M23A FED 24B-22 496	<b>Survey Calculation Method:</b>	Minimum Curvature
<b>Wellbore:</b>	Wellbore #1		
<b>Design:</b>	Design #3		

<b>Project</b>	Garfield County, CO		
<b>Map System:</b>	Universal Transverse Mercator (US Survey Fee	<b>System Datum:</b>	Mean Sea Level
<b>Geo Datum:</b>	NAD 1927 - Western US		
<b>Map Zone:</b>	Zone 12N (114 W to 108 W)		

<b>Site</b>	BJU M23A 496 Pad		
<b>Site Position:</b>		<b>Northing:</b>	14,424,028.50 usft
<b>From:</b>	Map	<b>Easting:</b>	2,445,109.60 usft
<b>Position Uncertainty:</b>	0.0 usft	<b>Slot Radius:</b>	13-3/16 "
		<b>Latitude:</b>	39.684596
		<b>Longitude:</b>	-108.140032
		<b>Grid Convergence:</b>	1.83 °

<b>Well</b>	BJU M23A FED 24B-22 496 - Slot 24B-22		
<b>Well Position</b>	<b>+N/-S</b>	-138.1 usft	<b>Northing:</b> 14,423,889.30 usft
	<b>+E/-W</b>	-37.3 usft	<b>Easting:</b> 2,445,076.70 usft
<b>Position Uncertainty</b>	0.0 usft	<b>Wellhead Elevation:</b>	<b>Latitude:</b> 39.684217
			<b>Longitude:</b> -108.140165
			<b>Ground Level:</b> 8,104.0 usft

<b>Wellbore</b>	Wellbore #1				
<b>Magnetics</b>	<b>Model Name</b>	<b>Sample Date</b>	<b>Declination (°)</b>	<b>Dip Angle (°)</b>	<b>Field Strength (nT)</b>
	HDGM2020	6/3/2020	9.43	65.82	51,187.30000000

<b>Design</b>	Design #3				
<b>Audit Notes:</b>					
<b>Version:</b>	<b>Phase:</b>	PLAN	<b>Tie On Depth:</b>	0.0	
<b>Vertical Section:</b>	<b>Depth From (TVD) (usft)</b>	<b>+N/-S (usft)</b>	<b>+E/-W (usft)</b>	<b>Direction (°)</b>	
	0.0	0.0	0.0	293.07	

<b>Plan Sections</b>										
<b>Measured Depth (usft)</b>	<b>Inclination (°)</b>	<b>Azimuth (°)</b>	<b>Vertical Depth (usft)</b>	<b>+N/-S (usft)</b>	<b>+E/-W (usft)</b>	<b>Dogleg Rate (°/100usft)</b>	<b>Build Rate (°/100usft)</b>	<b>Turn Rate (°/100usft)</b>	<b>TFO (°)</b>	<b>Target</b>
0.0	0.00	0.00	0.0	0.0	0.0	0.00	0.00	0.00	0.00	
300.0	0.00	0.00	300.0	0.0	0.0	0.00	0.00	0.00	0.00	
1,020.7	21.62	294.47	1,003.7	55.7	-122.3	3.00	3.00	0.00	294.47	
7,841.2	21.62	294.47	7,344.3	1,096.7	-2,409.7	0.00	0.00	0.00	0.00	
8,561.9	0.00	0.00	8,048.0	1,152.4	-2,532.0	3.00	-3.00	0.00	180.00	OHCR - 24B-22
8,654.2	1.39	250.00	8,140.3	1,152.0	-2,533.1	1.50	1.50	-119.13	250.00	
12,745.1	1.39	250.00	12,230.0	1,118.2	-2,626.0	0.00	0.00	0.00	0.00	PBHL - 24B-22

<b>Database:</b>	EDM 5000.1 Single User Db	<b>Local Co-ordinate Reference:</b>	Well BJU M23A FED 24B-22 496 - Slot 24B-22
<b>Company:</b>	Caerus Oil & Gas	<b>TVD Reference:</b>	RKB @ 8134.0usft (30')
<b>Project:</b>	Garfield County, CO	<b>MD Reference:</b>	RKB @ 8134.0usft (30')
<b>Site:</b>	BJU M23A 496 Pad	<b>North Reference:</b>	True
<b>Well:</b>	BJU M23A FED 24B-22 496	<b>Survey Calculation Method:</b>	Minimum Curvature
<b>Wellbore:</b>	Wellbore #1		
<b>Design:</b>	Design #3		

**Planned Survey**

Measured Depth (usft)	Inclination (°)	Azimuth (°)	Vertical Depth (usft)	+N/-S (usft)	+E/-W (usft)	Vertical Section (usft)	Dogleg Rate (°/100usft)	Build Rate (°/100usft)	Turn Rate (°/100usft)
0.0	0.00	0.00	0.0	0.0	0.0	0.0	0.00	0.00	0.00
100.0	0.00	0.00	100.0	0.0	0.0	0.0	0.00	0.00	0.00
200.0	0.00	0.00	200.0	0.0	0.0	0.0	0.00	0.00	0.00
<b>Build 3° / 100'</b>									
300.0	0.00	0.00	300.0	0.0	0.0	0.0	0.00	0.00	0.00
400.0	3.00	294.47	400.0	1.1	-2.4	2.6	3.00	3.00	0.00
500.0	6.00	294.47	499.6	4.3	-9.5	10.5	3.00	3.00	0.00
600.0	9.00	294.47	598.8	9.7	-21.4	23.5	3.00	3.00	0.00
700.0	12.00	294.47	697.1	17.3	-38.0	41.7	3.00	3.00	0.00
800.0	15.00	294.47	794.3	27.0	-59.2	65.1	3.00	3.00	0.00
900.0	18.00	294.47	890.2	38.7	-85.1	93.4	3.00	3.00	0.00
1,000.0	21.00	294.47	984.4	52.5	-115.5	126.8	3.00	3.00	0.00
<b>EOB @ 21.62° Inc. / 294.47° Azm</b>									
1,020.7	21.62	294.47	1,003.7	55.7	-122.3	134.3	3.00	3.00	0.00
1,100.0	21.62	294.47	1,077.4	67.8	-148.9	163.5	0.00	0.00	0.00
1,200.0	21.62	294.47	1,170.4	83.0	-182.4	200.4	0.00	0.00	0.00
1,300.0	21.62	294.47	1,263.4	98.3	-216.0	237.2	0.00	0.00	0.00
1,400.0	21.62	294.47	1,356.3	113.6	-249.5	274.1	0.00	0.00	0.00
1,500.0	21.62	294.47	1,449.3	128.8	-283.0	310.9	0.00	0.00	0.00
1,600.0	21.62	294.47	1,542.3	144.1	-316.6	347.7	0.00	0.00	0.00
1,700.0	21.62	294.47	1,635.2	159.4	-350.1	384.6	0.00	0.00	0.00
1,800.0	21.62	294.47	1,728.2	174.6	-383.7	421.4	0.00	0.00	0.00
1,900.0	21.62	294.47	1,821.1	189.9	-417.2	458.2	0.00	0.00	0.00
2,000.0	21.62	294.47	1,914.1	205.1	-450.7	495.1	0.00	0.00	0.00
2,100.0	21.62	294.47	2,007.1	220.4	-484.3	531.9	0.00	0.00	0.00
2,200.0	21.62	294.47	2,100.0	235.7	-517.8	568.7	0.00	0.00	0.00
2,300.0	21.62	294.47	2,193.0	250.9	-551.3	605.6	0.00	0.00	0.00
2,400.0	21.62	294.47	2,286.0	266.2	-584.9	642.4	0.00	0.00	0.00
2,500.0	21.62	294.47	2,378.9	281.5	-618.4	679.3	0.00	0.00	0.00
2,600.0	21.62	294.47	2,471.9	296.7	-652.0	716.1	0.00	0.00	0.00
2,700.0	21.62	294.47	2,564.9	312.0	-685.5	752.9	0.00	0.00	0.00
2,800.0	21.62	294.47	2,657.8	327.3	-719.0	789.8	0.00	0.00	0.00
2,900.0	21.62	294.47	2,750.8	342.5	-752.6	826.6	0.00	0.00	0.00
3,000.0	21.62	294.47	2,843.7	357.8	-786.1	863.4	0.00	0.00	0.00
3,100.0	21.62	294.47	2,936.7	373.0	-819.6	900.3	0.00	0.00	0.00
3,200.0	21.62	294.47	3,029.7	388.3	-853.2	937.1	0.00	0.00	0.00
3,300.0	21.62	294.47	3,122.6	403.6	-886.7	973.9	0.00	0.00	0.00
3,400.0	21.62	294.47	3,215.6	418.8	-920.3	1,010.8	0.00	0.00	0.00
3,500.0	21.62	294.47	3,308.6	434.1	-953.8	1,047.6	0.00	0.00	0.00
<b>Wasatch</b>									
3,546.7	21.62	294.47	3,352.0	441.2	-969.5	1,064.8	0.00	0.00	0.00
3,600.0	21.62	294.47	3,401.5	449.4	-987.3	1,084.5	0.00	0.00	0.00
3,700.0	21.62	294.47	3,494.5	464.6	-1,020.9	1,121.3	0.00	0.00	0.00
3,800.0	21.62	294.47	3,587.5	479.9	-1,054.4	1,158.1	0.00	0.00	0.00
3,900.0	21.62	294.47	3,680.4	495.2	-1,087.9	1,195.0	0.00	0.00	0.00
4,000.0	21.62	294.47	3,773.4	510.4	-1,121.5	1,231.8	0.00	0.00	0.00
4,100.0	21.62	294.47	3,866.3	525.7	-1,155.0	1,268.6	0.00	0.00	0.00
4,200.0	21.62	294.47	3,959.3	540.9	-1,188.6	1,305.5	0.00	0.00	0.00
4,300.0	21.62	294.47	4,052.3	556.2	-1,222.1	1,342.3	0.00	0.00	0.00
4,400.0	21.62	294.47	4,145.2	571.5	-1,255.6	1,379.1	0.00	0.00	0.00
4,500.0	21.62	294.47	4,238.2	586.7	-1,289.2	1,416.0	0.00	0.00	0.00
4,600.0	21.62	294.47	4,331.2	602.0	-1,322.7	1,452.8	0.00	0.00	0.00
4,700.0	21.62	294.47	4,424.1	617.3	-1,356.2	1,489.7	0.00	0.00	0.00

<b>Database:</b>	EDM 5000.1 Single User Db	<b>Local Co-ordinate Reference:</b>	Well BJU M23A FED 24B-22 496 - Slot 24B-22
<b>Company:</b>	Caerus Oil & Gas	<b>TVD Reference:</b>	RKB @ 8134.0usft (30')
<b>Project:</b>	Garfield County, CO	<b>MD Reference:</b>	RKB @ 8134.0usft (30')
<b>Site:</b>	BJU M23A 496 Pad	<b>North Reference:</b>	True
<b>Well:</b>	BJU M23A FED 24B-22 496	<b>Survey Calculation Method:</b>	Minimum Curvature
<b>Wellbore:</b>	Wellbore #1		
<b>Design:</b>	Design #3		

**Planned Survey**

Measured Depth (usft)	Inclination (°)	Azimuth (°)	Vertical Depth (usft)	+N/-S (usft)	+E/-W (usft)	Vertical Section (usft)	Dogleg Rate (°/100usft)	Build Rate (°/100usft)	Turn Rate (°/100usft)
4,800.0	21.62	294.47	4,517.1	632.5	-1,389.8	1,526.5	0.00	0.00	0.00
4,900.0	21.62	294.47	4,610.1	647.8	-1,423.3	1,563.3	0.00	0.00	0.00
5,000.0	21.62	294.47	4,703.0	663.1	-1,456.9	1,600.2	0.00	0.00	0.00
5,100.0	21.62	294.47	4,796.0	678.3	-1,490.4	1,637.0	0.00	0.00	0.00
5,200.0	21.62	294.47	4,889.0	693.6	-1,523.9	1,673.8	0.00	0.00	0.00
5,300.0	21.62	294.47	4,981.9	708.9	-1,557.5	1,710.7	0.00	0.00	0.00
5,400.0	21.62	294.47	5,074.9	724.1	-1,591.0	1,747.5	0.00	0.00	0.00
5,500.0	21.62	294.47	5,167.8	739.4	-1,624.5	1,784.3	0.00	0.00	0.00
5,600.0	21.62	294.47	5,260.8	754.6	-1,658.1	1,821.2	0.00	0.00	0.00
5,700.0	21.62	294.47	5,353.8	769.9	-1,691.6	1,858.0	0.00	0.00	0.00
5,800.0	21.62	294.47	5,446.7	785.2	-1,725.2	1,894.9	0.00	0.00	0.00
5,900.0	21.62	294.47	5,539.7	800.4	-1,758.7	1,931.7	0.00	0.00	0.00
6,000.0	21.62	294.47	5,632.7	815.7	-1,792.2	1,968.5	0.00	0.00	0.00
6,100.0	21.62	294.47	5,725.6	831.0	-1,825.8	2,005.4	0.00	0.00	0.00
<b>Wasatch G</b>									
6,128.4	21.62	294.47	5,752.0	835.3	-1,835.3	2,015.8	0.00	0.00	0.00
6,200.0	21.62	294.47	5,818.6	846.2	-1,859.3	2,042.2	0.00	0.00	0.00
6,300.0	21.62	294.47	5,911.6	861.5	-1,892.8	2,079.0	0.00	0.00	0.00
6,400.0	21.62	294.47	6,004.5	876.8	-1,926.4	2,115.9	0.00	0.00	0.00
<b>Fort Union</b>									
6,451.1	21.62	294.47	6,052.0	884.6	-1,943.5	2,134.7	0.00	0.00	0.00
6,500.0	21.62	294.47	6,097.5	892.0	-1,959.9	2,152.7	0.00	0.00	0.00
6,600.0	21.62	294.47	6,190.4	907.3	-1,993.5	2,189.6	0.00	0.00	0.00
6,700.0	21.62	294.47	6,283.4	922.5	-2,027.0	2,226.4	0.00	0.00	0.00
6,800.0	21.62	294.47	6,376.4	937.8	-2,060.5	2,263.2	0.00	0.00	0.00
6,900.0	21.62	294.47	6,469.3	953.1	-2,094.1	2,300.1	0.00	0.00	0.00
7,000.0	21.62	294.47	6,562.3	968.3	-2,127.6	2,336.9	0.00	0.00	0.00
7,100.0	21.62	294.47	6,655.3	983.6	-2,161.1	2,373.7	0.00	0.00	0.00
7,200.0	21.62	294.47	6,748.2	998.9	-2,194.7	2,410.6	0.00	0.00	0.00
7,300.0	21.62	294.47	6,841.2	1,014.1	-2,228.2	2,447.4	0.00	0.00	0.00
7,400.0	21.62	294.47	6,934.2	1,029.4	-2,261.8	2,484.2	0.00	0.00	0.00
7,500.0	21.62	294.47	7,027.1	1,044.7	-2,295.3	2,521.1	0.00	0.00	0.00
7,600.0	21.62	294.47	7,120.1	1,059.9	-2,328.8	2,557.9	0.00	0.00	0.00
7,700.0	21.62	294.47	7,213.0	1,075.2	-2,362.4	2,594.8	0.00	0.00	0.00
7,800.0	21.62	294.47	7,306.0	1,090.5	-2,395.9	2,631.6	0.00	0.00	0.00
<b>Drop 3° /100'</b>									
7,841.2	21.62	294.47	7,344.3	1,096.7	-2,409.7	2,646.7	0.00	0.00	0.00
7,900.0	19.86	294.47	7,399.3	1,105.4	-2,428.7	2,667.6	3.00	-3.00	0.00
8,000.0	16.86	294.47	7,494.2	1,118.4	-2,457.3	2,699.1	3.00	-3.00	0.00
8,100.0	13.86	294.47	7,590.6	1,129.4	-2,481.4	2,725.5	3.00	-3.00	0.00
8,200.0	10.86	294.47	7,688.3	1,138.2	-2,500.9	2,746.9	3.00	-3.00	0.00
8,300.0	7.86	294.47	7,786.9	1,145.0	-2,515.7	2,763.2	3.00	-3.00	0.00
8,400.0	4.86	294.47	7,886.3	1,149.6	-2,525.8	2,774.2	3.00	-3.00	0.00
8,500.0	1.86	294.47	7,986.1	1,152.0	-2,531.1	2,780.1	3.00	-3.00	0.00
<b>EOD @ Vertical / Build 1.5° / 100' - Ohio Creek</b>									
8,561.9	0.00	0.00	8,048.0	1,152.4	-2,532.0	2,781.1	3.00	-3.00	0.00
8,600.0	0.57	250.00	8,086.1	1,152.3	-2,532.2	2,781.2	1.50	1.50	0.00
<b>EOB @ 1.38° Inc. / 250.00° Azm</b>									
8,654.2	1.39	250.00	8,140.3	1,152.0	-2,533.1	2,781.9	1.50	1.50	0.00
8,700.0	1.39	250.00	8,186.1	1,151.6	-2,534.1	2,782.7	0.00	0.00	0.00
8,800.0	1.39	250.00	8,286.1	1,150.8	-2,536.4	2,784.5	0.00	0.00	0.00
8,900.0	1.39	250.00	8,386.0	1,150.0	-2,538.6	2,786.2	0.00	0.00	0.00

<b>Database:</b>	EDM 5000.1 Single User Db	<b>Local Co-ordinate Reference:</b>	Well BJU M23A FED 24B-22 496 - Slot 24B-22
<b>Company:</b>	Caerus Oil & Gas	<b>TVD Reference:</b>	RKB @ 8134.0usft (30')
<b>Project:</b>	Garfield County, CO	<b>MD Reference:</b>	RKB @ 8134.0usft (30')
<b>Site:</b>	BJU M23A 496 Pad	<b>North Reference:</b>	True
<b>Well:</b>	BJU M23A FED 24B-22 496	<b>Survey Calculation Method:</b>	Minimum Curvature
<b>Wellbore:</b>	Wellbore #1		
<b>Design:</b>	Design #3		

**Planned Survey**

Measured Depth (usft)	Inclination (°)	Azimuth (°)	Vertical Depth (usft)	+N/-S (usft)	+E/-W (usft)	Vertical Section (usft)	Dogleg Rate (°/100usft)	Build Rate (°/100usft)	Turn Rate (°/100usft)
<b>Williams Fork</b>									
8,971.0	1.39	250.00	8,457.0	1,149.4	-2,540.3	2,787.5	0.00	0.00	0.00
9,000.0	1.39	250.00	8,486.0	1,149.2	-2,540.9	2,788.0	0.00	0.00	0.00
9,100.0	1.39	250.00	8,586.0	1,148.3	-2,543.2	2,789.8	0.00	0.00	0.00
9,200.0	1.39	250.00	8,686.0	1,147.5	-2,545.5	2,791.5	0.00	0.00	0.00
9,300.0	1.39	250.00	8,785.9	1,146.7	-2,547.7	2,793.3	0.00	0.00	0.00
9,400.0	1.39	250.00	8,885.9	1,145.9	-2,550.0	2,795.1	0.00	0.00	0.00
9,500.0	1.39	250.00	8,985.9	1,145.0	-2,552.3	2,796.8	0.00	0.00	0.00
9,600.0	1.39	250.00	9,085.8	1,144.2	-2,554.5	2,798.6	0.00	0.00	0.00
9,700.0	1.39	250.00	9,185.8	1,143.4	-2,556.8	2,800.4	0.00	0.00	0.00
9,800.0	1.39	250.00	9,285.8	1,142.5	-2,559.1	2,802.1	0.00	0.00	0.00
9,900.0	1.39	250.00	9,385.8	1,141.7	-2,561.4	2,803.9	0.00	0.00	0.00
10,000.0	1.39	250.00	9,485.7	1,140.9	-2,563.6	2,805.7	0.00	0.00	0.00
10,100.0	1.39	250.00	9,585.7	1,140.1	-2,565.9	2,807.4	0.00	0.00	0.00
10,200.0	1.39	250.00	9,685.7	1,139.2	-2,568.2	2,809.2	0.00	0.00	0.00
10,300.0	1.39	250.00	9,785.6	1,138.4	-2,570.4	2,811.0	0.00	0.00	0.00
10,400.0	1.39	250.00	9,885.6	1,137.6	-2,572.7	2,812.7	0.00	0.00	0.00
10,500.0	1.39	250.00	9,985.6	1,136.8	-2,575.0	2,814.5	0.00	0.00	0.00
10,600.0	1.39	250.00	10,085.6	1,135.9	-2,577.3	2,816.3	0.00	0.00	0.00
10,700.0	1.39	250.00	10,185.5	1,135.1	-2,579.5	2,818.0	0.00	0.00	0.00
10,800.0	1.39	250.00	10,285.5	1,134.3	-2,581.8	2,819.8	0.00	0.00	0.00
10,900.0	1.39	250.00	10,385.5	1,133.5	-2,584.1	2,821.6	0.00	0.00	0.00
11,000.0	1.39	250.00	10,485.4	1,132.6	-2,586.3	2,823.3	0.00	0.00	0.00
11,100.0	1.39	250.00	10,585.4	1,131.8	-2,588.6	2,825.1	0.00	0.00	0.00
11,200.0	1.39	250.00	10,685.4	1,131.0	-2,590.9	2,826.9	0.00	0.00	0.00
11,300.0	1.39	250.00	10,785.3	1,130.1	-2,593.2	2,828.6	0.00	0.00	0.00
11,400.0	1.39	250.00	10,885.3	1,129.3	-2,595.4	2,830.4	0.00	0.00	0.00
11,500.0	1.39	250.00	10,985.3	1,128.5	-2,597.7	2,832.2	0.00	0.00	0.00
11,600.0	1.39	250.00	11,085.3	1,127.7	-2,600.0	2,833.9	0.00	0.00	0.00
11,700.0	1.39	250.00	11,185.2	1,126.8	-2,602.2	2,835.7	0.00	0.00	0.00
<b>Cameo</b>									
11,744.8	1.39	250.00	11,230.0	1,126.5	-2,603.3	2,836.5	0.00	0.00	0.00
11,800.0	1.39	250.00	11,285.2	1,126.0	-2,604.5	2,837.5	0.00	0.00	0.00
11,900.0	1.39	250.00	11,385.2	1,125.2	-2,606.8	2,839.2	0.00	0.00	0.00
12,000.0	1.39	250.00	11,485.1	1,124.4	-2,609.1	2,841.0	0.00	0.00	0.00
12,100.0	1.39	250.00	11,585.1	1,123.5	-2,611.3	2,842.8	0.00	0.00	0.00
12,200.0	1.39	250.00	11,685.1	1,122.7	-2,613.6	2,844.5	0.00	0.00	0.00
<b>Rollins</b>									
12,244.9	1.39	250.00	11,730.0	1,122.3	-2,614.6	2,845.3	0.00	0.00	0.00
12,300.0	1.39	250.00	11,785.1	1,121.9	-2,615.9	2,846.3	0.00	0.00	0.00
12,400.0	1.39	250.00	11,885.0	1,121.1	-2,618.1	2,848.1	0.00	0.00	0.00
12,500.0	1.39	250.00	11,985.0	1,120.2	-2,620.4	2,849.8	0.00	0.00	0.00
12,600.0	1.39	250.00	12,085.0	1,119.4	-2,622.7	2,851.6	0.00	0.00	0.00
12,700.0	1.39	250.00	12,184.9	1,118.6	-2,625.0	2,853.3	0.00	0.00	0.00
<b>TD @ 12745.1' MD / 12230.0' TVD</b>									
12,745.1	1.39	250.00	12,230.0	1,118.2	-2,626.0	2,854.1	0.00	0.00	0.00

<b>Database:</b>	EDM 5000.1 Single User Db	<b>Local Co-ordinate Reference:</b>	Well BJU M23A FED 24B-22 496 - Slot 24B-22
<b>Company:</b>	Caerus Oil & Gas	<b>TVD Reference:</b>	RKB @ 8134.0usft (30')
<b>Project:</b>	Garfield County, CO	<b>MD Reference:</b>	RKB @ 8134.0usft (30')
<b>Site:</b>	BJU M23A 496 Pad	<b>North Reference:</b>	True
<b>Well:</b>	BJU M23A FED 24B-22 496	<b>Survey Calculation Method:</b>	Minimum Curvature
<b>Wellbore:</b>	Wellbore #1		
<b>Design:</b>	Design #3		

#### Design Targets

Target Name - hit/miss target - Shape	Dip Angle (°)	Dip Dir. (°)	TVD (usft)	+N/-S (usft)	+E/-W (usft)	Northing (usft)	Easting (usft)	Latitude	Longitude
OHCR - 24B-22 - plan hits target center - Point	0.00	0.00	8,048.0	1,152.4	-2,532.0	14,424,960.38	2,442,509.23	39.687379	-108.149158
PBHL - 24B-22 - plan hits target center - Ellipse (radii L100.0 W50.0 on 250.00 azi)	0.00	0.00	12,230.0	1,118.2	-2,626.0	14,424,923.20	2,442,416.40	39.687285	-108.149492

#### Formations

Measured Depth (usft)	Vertical Depth (usft)	Name	Lithology	Dip (°)	Dip Direction (°)
3,546.7	3,352.0	Wasatch			
6,128.4	5,752.0	Wasatch G			
6,451.1	6,052.0	Fort Union			
8,561.9	8,048.0	Ohio Creek			
8,971.0	8,457.0	Williams Fork			
11,744.8	11,230.0	Cameo			
12,244.9	11,730.0	Rollins			

#### Plan Annotations

Measured Depth (usft)	Vertical Depth (usft)	Local Coordinates		Comment
		+N/-S (usft)	+E/-W (usft)	
300.0	300.0	0.0	0.0	Build 3° / 100'
1,020.7	1,003.7	55.7	-122.3	EOB @ 21.62° Inc. / 294.47° Azm
7,841.2	7,344.3	1,096.7	-2,409.7	Drop 3° / 100'
8,561.9	8,048.0	1,152.4	-2,532.0	EOD @ Vertical / Build 1.5° / 100'
8,654.2	8,140.3	1,152.0	-2,533.1	EOB @ 1.38° Inc. / 250.00° Azm
12,745.1	12,230.0	1,118.2	-2,626.0	TD @ 12745.1' MD / 12230.0' TVD