

Project: Garfield County, CO  
Site: BJU M23A 496 Pad  
Well: BJU M23A FED 24A-22 496  
Wellbore: Wellbore #1  
Design: Design #3  
Latitude: 39.684288  
Longitude: -108.140139  
Ground Level: 8104.0  
RKB @ 8134.0usft (30')

PROJECT DETAILS: Garfield County, CO  
Geodetic System: Universal Transverse Mercator (US Survey Feet)  
Datum: NAD 1927 - Western US  
Ellipsoid: Clarke 1866  
Zone: Zone 12N (114 W to 108 W)  
System Datum: Mean Sea Level

REFERENCE INFORMATION  
Vertical (TVD) Reference: RKB @ 8134.0usft (30')  
Section (VS) Reference: Slot - 24A-22(0.0N, 0.0E)  
Measured Depth Reference: RKB @ 8134.0usft (30')  
Calculation Method: Minimum Curvature

FORMATION TOP DETAILS

TVDPath	MDPath	Formation
3383.0	3537.2	Wasatch
5783.0	6078.2	Wasatch G
6083.0	6395.8	Fort Union
8073.0	8477.8	Ohio Creek
8484.0	8888.9	Williams Fork
11289.0	11694.7	Cameo
11789.0	12194.8	Rollins

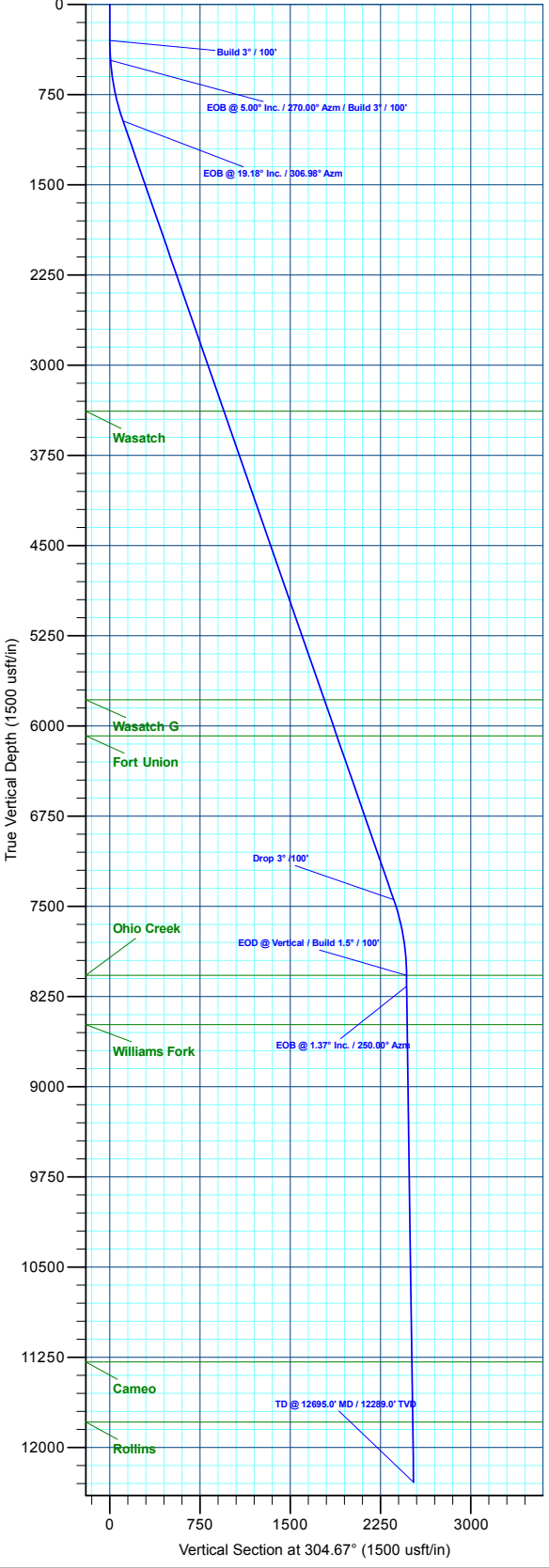
SECTION DETAILS									
MD	Inc	Azi	TVD	+N/-S	+E/-W	Dleg	TFace	VSect	Annotation
0.0	0.00	0.00	0.0	0.0	0.0	0.00	0.00	0.0	
300.0	0.00	0.00	300.0	0.0	0.0	0.00	0.00	0.0	Build 3° / 100'
466.7	5.00	270.00	466.5	0.0	-7.3	3.00	270.00	6.0	EOB @ 5.00° Inc. / 270.00° Azm / Build 3° / 100'
982.2	19.18	306.98	969.8	51.2	-97.9	3.00	47.81	109.7	EOB @ 19.18° Inc. / 306.98° Azm
7838.5	19.18	306.98	7445.6	1406.0	-1897.2	0.00	0.00	2360.1	Drop 3° / 100'
8477.8	0.00	0.00	8073.0	1469.7	-1981.8	3.00	180.00	2466.0	EOD @ Vertical / Build 1.5° / 100'
8569.4	1.37	250.00	8164.6	1469.3	-1982.8	1.50	250.00	2466.6	EOB @ 1.37° Inc. / 250.00° Azm
12695.0	1.37	250.00	12289.0	1435.5	-2075.8	0.00	0.00	2523.8	TD @ 12695.0° MD / 12289.0° TVD

DESIGN TARGET DETAILS

Name	TVD	+N/-S	+E/-W	Northing	Easting	Latitude	Longitude
OHCR - 24A-22	8073.0	1469.7	-1981.8	14425321.38	2443055.23	39.688322	-108.147179
PBHL - 24A-22	12289.0	1435.5	-2075.8	14425284.20	2442962.40	39.688228	-108.147513

WELL DETAILS: BJU M23A FED 24A-22 496

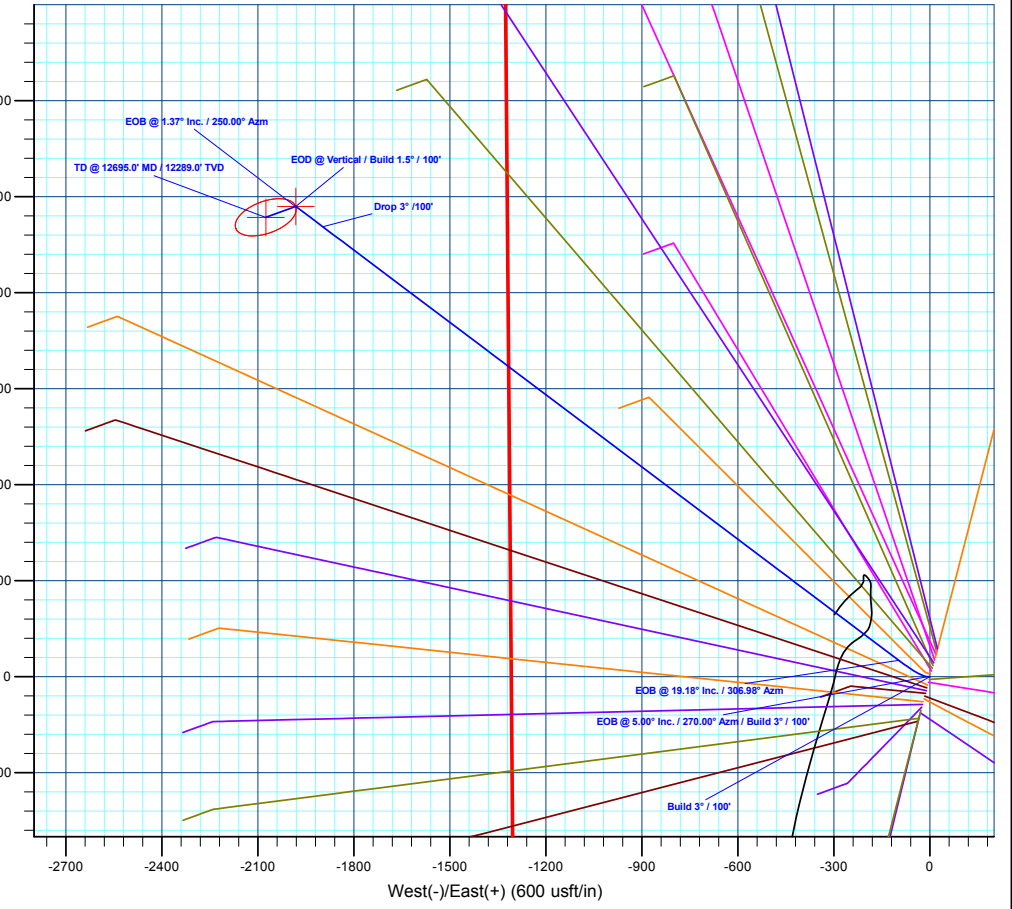
+N/-S	+E/-W	Ground Level : 8104.0	Northing	Easting	Latitude	Longitude
0.0	0.0		14423915.60	2445082.90	39.684288	-108.140139
						24A-22



**KLX**  
Directional Drilling

**CAERUS**  
OIL AND GAS LLC

Azimuths to True North  
Magnetic North: 9.43°  
Magnetic Field  
Strength: 51187.3nT  
Dip Angle: 65.82°  
Date: 6/3/2020  
Model: HDGM2020



Plan: Design #3 (BJU M23A FED 24A-22 496/Wellbore #1)

Created By: Will Jircik Date: 4:32, January 05 2023



## **Caerus Oil & Gas**

**Garfield County, CO**

**BJU M23A 496 Pad**

**BJU M23A FED 24A-22 496 - Slot 24A-22**

**Wellbore #1**

**Plan: Design #3**

## **KLX Well Planning Report**

**05 January, 2023**



<b>Database:</b>	EDM 5000.1 Single User Db	<b>Local Co-ordinate Reference:</b>	Well BJU M23A FED 24A-22 496 - Slot 24A-22
<b>Company:</b>	Caerus Oil & Gas	<b>TVD Reference:</b>	RKB @ 8134.0usft (30')
<b>Project:</b>	Garfield County, CO	<b>MD Reference:</b>	RKB @ 8134.0usft (30')
<b>Site:</b>	BJU M23A 496 Pad	<b>North Reference:</b>	True
<b>Well:</b>	BJU M23A FED 24A-22 496	<b>Survey Calculation Method:</b>	Minimum Curvature
<b>Wellbore:</b>	Wellbore #1		
<b>Design:</b>	Design #3		

<b>Project</b>	Garfield County, CO		
<b>Map System:</b>	Universal Transverse Mercator (US Survey Fee	<b>System Datum:</b>	Mean Sea Level
<b>Geo Datum:</b>	NAD 1927 - Western US		
<b>Map Zone:</b>	Zone 12N (114 W to 108 W)		

<b>Site</b>	BJU M23A 496 Pad		
<b>Site Position:</b>		<b>Northing:</b>	14,424,028.50 usft
<b>From:</b>	Map	<b>Easting:</b>	2,445,109.60 usft
<b>Position Uncertainty:</b>	0.0 usft	<b>Slot Radius:</b>	13-3/16 "
		<b>Latitude:</b>	39.684596
		<b>Longitude:</b>	-108.140032
		<b>Grid Convergence:</b>	1.83 °

<b>Well</b>	BJU M23A FED 24A-22 496 - Slot 24A-22		
<b>Well Position</b>	<b>+N/-S</b>	-112.0 usft	<b>Northing:</b> 14,423,915.60 usft
	<b>+E/-W</b>	-30.3 usft	<b>Easting:</b> 2,445,082.90 usft
<b>Position Uncertainty</b>		0.0 usft	<b>Wellhead Elevation:</b>
			<b>Latitude:</b> 39.684288
			<b>Longitude:</b> -108.140140
			<b>Ground Level:</b> 8,104.0 usft

<b>Wellbore</b>	Wellbore #1				
<b>Magnetics</b>	<b>Model Name</b>	<b>Sample Date</b>	<b>Declination (°)</b>	<b>Dip Angle (°)</b>	<b>Field Strength (nT)</b>
	HDGM2020	6/3/2020	9.43	65.82	51,187.30000000

<b>Design</b>	Design #3				
<b>Audit Notes:</b>					
<b>Version:</b>	<b>Phase:</b>	PLAN	<b>Tie On Depth:</b>	0.0	
<b>Vertical Section:</b>	<b>Depth From (TVD) (usft)</b>	<b>+N/-S (usft)</b>	<b>+E/-W (usft)</b>	<b>Direction (°)</b>	
	0.0	0.0	0.0	304.67	

<b>Plan Sections</b>										
<b>Measured Depth (usft)</b>	<b>Inclination (°)</b>	<b>Azimuth (°)</b>	<b>Vertical Depth (usft)</b>	<b>+N/-S (usft)</b>	<b>+E/-W (usft)</b>	<b>Dogleg Rate (°/100usft)</b>	<b>Build Rate (°/100usft)</b>	<b>Turn Rate (°/100usft)</b>	<b>TFO (°)</b>	<b>Target</b>
0.0	0.00	0.00	0.0	0.0	0.0	0.00	0.00	0.00	0.00	
300.0	0.00	0.00	300.0	0.0	0.0	0.00	0.00	0.00	0.00	
466.7	5.00	270.00	466.5	0.0	-7.3	3.00	3.00	0.00	270.00	
982.2	19.18	306.98	969.8	51.2	-97.9	3.00	2.75	7.17	47.81	
7,838.5	19.18	306.98	7,445.6	1,406.0	-1,897.2	0.00	0.00	0.00	0.00	
8,477.8	0.00	0.00	8,073.0	1,469.7	-1,981.8	3.00	-3.00	0.00	180.00	OHCR - 24A-22
8,569.4	1.37	250.00	8,164.6	1,469.3	-1,982.8	1.50	1.50	-120.12	250.00	
12,695.0	1.37	250.00	12,289.0	1,435.5	-2,075.8	0.00	0.00	0.00	0.00	PBHL - 24A-22

<b>Database:</b>	EDM 5000.1 Single User Db	<b>Local Co-ordinate Reference:</b>	Well BJU M23A FED 24A-22 496 - Slot 24A-22
<b>Company:</b>	Caerus Oil & Gas	<b>TVD Reference:</b>	RKB @ 8134.0usft (30')
<b>Project:</b>	Garfield County, CO	<b>MD Reference:</b>	RKB @ 8134.0usft (30')
<b>Site:</b>	BJU M23A 496 Pad	<b>North Reference:</b>	True
<b>Well:</b>	BJU M23A FED 24A-22 496	<b>Survey Calculation Method:</b>	Minimum Curvature
<b>Wellbore:</b>	Wellbore #1		
<b>Design:</b>	Design #3		

**Planned Survey**

Measured Depth (usft)	Inclination (°)	Azimuth (°)	Vertical Depth (usft)	+N/-S (usft)	+E/-W (usft)	Vertical Section (usft)	Dogleg Rate (°/100usft)	Build Rate (°/100usft)	Turn Rate (°/100usft)
0.0	0.00	0.00	0.0	0.0	0.0	0.0	0.00	0.00	0.00
100.0	0.00	0.00	100.0	0.0	0.0	0.0	0.00	0.00	0.00
200.0	0.00	0.00	200.0	0.0	0.0	0.0	0.00	0.00	0.00
<b>Build 3° / 100'</b>									
300.0	0.00	0.00	300.0	0.0	0.0	0.0	0.00	0.00	0.00
400.0	3.00	270.00	400.0	0.0	-2.6	2.2	3.00	3.00	0.00
<b>EOB @ 5.00° Inc. / 270.00° Azm / Build 3° / 100'</b>									
466.7	5.00	270.00	466.5	0.0	-7.3	6.0	3.00	3.00	0.00
500.0	5.72	277.46	499.6	0.2	-10.4	8.6	3.00	2.16	22.37
600.0	8.24	291.15	598.9	3.4	-22.0	20.0	3.00	2.52	13.69
700.0	11.00	298.25	697.5	10.5	-37.1	36.5	3.00	2.76	7.10
800.0	13.86	302.49	795.1	21.5	-55.6	57.9	3.00	2.86	4.24
900.0	16.77	305.30	891.6	36.3	-77.5	84.3	3.00	2.91	2.80
<b>EOB @ 19.18° Inc. / 306.98° Azm</b>									
982.2	19.18	306.98	969.8	51.2	-97.9	109.7	3.00	2.93	2.04
1,000.0	19.18	306.98	986.6	54.8	-102.6	115.5	0.00	0.00	0.00
1,100.0	19.18	306.98	1,081.0	74.5	-128.8	148.4	0.00	0.00	0.00
1,200.0	19.18	306.98	1,175.5	94.3	-155.1	181.2	0.00	0.00	0.00
1,300.0	19.18	306.98	1,269.9	114.0	-181.3	214.0	0.00	0.00	0.00
1,400.0	19.18	306.98	1,364.4	133.8	-207.6	246.8	0.00	0.00	0.00
1,500.0	19.18	306.98	1,458.8	153.6	-233.8	279.6	0.00	0.00	0.00
1,600.0	19.18	306.98	1,553.3	173.3	-260.0	312.5	0.00	0.00	0.00
1,700.0	19.18	306.98	1,647.7	193.1	-286.3	345.3	0.00	0.00	0.00
1,800.0	19.18	306.98	1,742.2	212.8	-312.5	378.1	0.00	0.00	0.00
1,900.0	19.18	306.98	1,836.6	232.6	-338.8	410.9	0.00	0.00	0.00
2,000.0	19.18	306.98	1,931.1	252.3	-365.0	443.7	0.00	0.00	0.00
2,100.0	19.18	306.98	2,025.5	272.1	-391.3	476.6	0.00	0.00	0.00
2,200.0	19.18	306.98	2,120.0	291.9	-417.5	509.4	0.00	0.00	0.00
2,300.0	19.18	306.98	2,214.4	311.6	-443.7	542.2	0.00	0.00	0.00
2,400.0	19.18	306.98	2,308.9	331.4	-470.0	575.0	0.00	0.00	0.00
2,500.0	19.18	306.98	2,403.3	351.1	-496.2	607.9	0.00	0.00	0.00
2,600.0	19.18	306.98	2,497.8	370.9	-522.5	640.7	0.00	0.00	0.00
2,700.0	19.18	306.98	2,592.2	390.7	-548.7	673.5	0.00	0.00	0.00
2,800.0	19.18	306.98	2,686.7	410.4	-574.9	706.3	0.00	0.00	0.00
2,900.0	19.18	306.98	2,781.1	430.2	-601.2	739.1	0.00	0.00	0.00
3,000.0	19.18	306.98	2,875.6	449.9	-627.4	772.0	0.00	0.00	0.00
3,100.0	19.18	306.98	2,970.0	469.7	-653.7	804.8	0.00	0.00	0.00
3,200.0	19.18	306.98	3,064.5	489.5	-679.9	837.6	0.00	0.00	0.00
3,300.0	19.18	306.98	3,158.9	509.2	-706.2	870.4	0.00	0.00	0.00
3,400.0	19.18	306.98	3,253.4	529.0	-732.4	903.3	0.00	0.00	0.00
3,500.0	19.18	306.98	3,347.8	548.7	-758.6	936.1	0.00	0.00	0.00
<b>Wasatch</b>									
3,537.2	19.18	306.98	3,383.0	556.1	-768.4	948.3	0.00	0.00	0.00
3,600.0	19.18	306.98	3,442.3	568.5	-784.9	968.9	0.00	0.00	0.00
3,700.0	19.18	306.98	3,536.7	588.2	-811.1	1,001.7	0.00	0.00	0.00
3,800.0	19.18	306.98	3,631.2	608.0	-837.4	1,034.5	0.00	0.00	0.00
3,900.0	19.18	306.98	3,725.7	627.8	-863.6	1,067.4	0.00	0.00	0.00
4,000.0	19.18	306.98	3,820.1	647.5	-889.8	1,100.2	0.00	0.00	0.00
4,100.0	19.18	306.98	3,914.6	667.3	-916.1	1,133.0	0.00	0.00	0.00
4,200.0	19.18	306.98	4,009.0	687.0	-942.3	1,165.8	0.00	0.00	0.00
4,300.0	19.18	306.98	4,103.5	706.8	-968.6	1,198.7	0.00	0.00	0.00
4,400.0	19.18	306.98	4,197.9	726.6	-994.8	1,231.5	0.00	0.00	0.00
4,500.0	19.18	306.98	4,292.4	746.3	-1,021.1	1,264.3	0.00	0.00	0.00

<b>Database:</b>	EDM 5000.1 Single User Db	<b>Local Co-ordinate Reference:</b>	Well BJU M23A FED 24A-22 496 - Slot 24A-22
<b>Company:</b>	Caerus Oil & Gas	<b>TVD Reference:</b>	RKB @ 8134.0usft (30')
<b>Project:</b>	Garfield County, CO	<b>MD Reference:</b>	RKB @ 8134.0usft (30')
<b>Site:</b>	BJU M23A 496 Pad	<b>North Reference:</b>	True
<b>Well:</b>	BJU M23A FED 24A-22 496	<b>Survey Calculation Method:</b>	Minimum Curvature
<b>Wellbore:</b>	Wellbore #1		
<b>Design:</b>	Design #3		

**Planned Survey**

Measured Depth (usft)	Inclination (°)	Azimuth (°)	Vertical Depth (usft)	+N/-S (usft)	+E/-W (usft)	Vertical Section (usft)	Dogleg Rate (°/100usft)	Build Rate (°/100usft)	Turn Rate (°/100usft)
4,600.0	19.18	306.98	4,386.8	766.1	-1,047.3	1,297.1	0.00	0.00	0.00
4,700.0	19.18	306.98	4,481.3	785.8	-1,073.5	1,329.9	0.00	0.00	0.00
4,800.0	19.18	306.98	4,575.7	805.6	-1,099.8	1,362.8	0.00	0.00	0.00
4,900.0	19.18	306.98	4,670.2	825.3	-1,126.0	1,395.6	0.00	0.00	0.00
5,000.0	19.18	306.98	4,764.6	845.1	-1,152.3	1,428.4	0.00	0.00	0.00
5,100.0	19.18	306.98	4,859.1	864.9	-1,178.5	1,461.2	0.00	0.00	0.00
5,200.0	19.18	306.98	4,953.5	884.6	-1,204.8	1,494.1	0.00	0.00	0.00
5,300.0	19.18	306.98	5,048.0	904.4	-1,231.0	1,526.9	0.00	0.00	0.00
5,400.0	19.18	306.98	5,142.4	924.1	-1,257.2	1,559.7	0.00	0.00	0.00
5,500.0	19.18	306.98	5,236.9	943.9	-1,283.5	1,592.5	0.00	0.00	0.00
5,600.0	19.18	306.98	5,331.3	963.7	-1,309.7	1,625.3	0.00	0.00	0.00
5,700.0	19.18	306.98	5,425.8	983.4	-1,336.0	1,658.2	0.00	0.00	0.00
5,800.0	19.18	306.98	5,520.2	1,003.2	-1,362.2	1,691.0	0.00	0.00	0.00
5,900.0	19.18	306.98	5,614.7	1,022.9	-1,388.4	1,723.8	0.00	0.00	0.00
6,000.0	19.18	306.98	5,709.1	1,042.7	-1,414.7	1,756.6	0.00	0.00	0.00
<b>Wasatch G</b>									
6,078.2	19.18	306.98	5,783.0	1,058.2	-1,435.2	1,782.3	0.00	0.00	0.00
6,100.0	19.18	306.98	5,803.6	1,062.5	-1,440.9	1,789.5	0.00	0.00	0.00
6,200.0	19.18	306.98	5,898.0	1,082.2	-1,467.2	1,822.3	0.00	0.00	0.00
6,300.0	19.18	306.98	5,992.5	1,102.0	-1,493.4	1,855.1	0.00	0.00	0.00
<b>Fort Union</b>									
6,395.8	19.18	306.98	6,083.0	1,120.9	-1,518.6	1,886.6	0.00	0.00	0.00
6,400.0	19.18	306.98	6,086.9	1,121.7	-1,519.7	1,887.9	0.00	0.00	0.00
6,500.0	19.18	306.98	6,181.4	1,141.5	-1,545.9	1,920.7	0.00	0.00	0.00
6,600.0	19.18	306.98	6,275.8	1,161.2	-1,572.1	1,953.6	0.00	0.00	0.00
6,700.0	19.18	306.98	6,370.3	1,181.0	-1,598.4	1,986.4	0.00	0.00	0.00
6,800.0	19.18	306.98	6,464.7	1,200.8	-1,624.6	2,019.2	0.00	0.00	0.00
6,900.0	19.18	306.98	6,559.2	1,220.5	-1,650.9	2,052.0	0.00	0.00	0.00
7,000.0	19.18	306.98	6,653.6	1,240.3	-1,677.1	2,084.8	0.00	0.00	0.00
7,100.0	19.18	306.98	6,748.1	1,260.0	-1,703.3	2,117.7	0.00	0.00	0.00
7,200.0	19.18	306.98	6,842.5	1,279.8	-1,729.6	2,150.5	0.00	0.00	0.00
7,300.0	19.18	306.98	6,937.0	1,299.6	-1,755.8	2,183.3	0.00	0.00	0.00
7,400.0	19.18	306.98	7,031.4	1,319.3	-1,782.1	2,216.1	0.00	0.00	0.00
7,500.0	19.18	306.98	7,125.9	1,339.1	-1,808.3	2,249.0	0.00	0.00	0.00
7,600.0	19.18	306.98	7,220.3	1,358.8	-1,834.6	2,281.8	0.00	0.00	0.00
7,700.0	19.18	306.98	7,314.8	1,378.6	-1,860.8	2,314.6	0.00	0.00	0.00
7,800.0	19.18	306.98	7,409.2	1,398.4	-1,887.0	2,347.4	0.00	0.00	0.00
<b>Drop 3° / 100'</b>									
7,838.5	19.18	306.98	7,445.6	1,406.0	-1,897.2	2,360.1	0.00	0.00	0.00
7,900.0	17.33	306.98	7,504.0	1,417.5	-1,912.5	2,379.3	3.00	-3.00	0.00
8,000.0	14.33	306.98	7,600.2	1,434.0	-1,934.3	2,406.6	3.00	-3.00	0.00
8,100.0	11.33	306.98	7,697.7	1,447.3	-1,952.1	2,428.8	3.00	-3.00	0.00
8,200.0	8.33	306.98	7,796.2	1,457.6	-1,965.7	2,445.8	3.00	-3.00	0.00
8,300.0	5.33	306.98	7,895.5	1,464.7	-1,975.2	2,457.7	3.00	-3.00	0.00
8,400.0	2.33	306.98	7,995.2	1,468.8	-1,980.6	2,464.4	3.00	-3.00	0.00
<b>EOD @ Vertical / Build 1.5° / 100' - Ohio Creek</b>									
8,477.8	0.00	0.00	8,073.0	1,469.7	-1,981.8	2,466.0	3.00	-3.00	0.00
8,500.0	0.33	250.00	8,095.2	1,469.7	-1,981.9	2,466.0	1.50	1.50	0.00
<b>EOB @ 1.37° Inc. / 250.00° Azm</b>									
8,569.4	1.37	250.00	8,164.6	1,469.3	-1,982.8	2,466.6	1.50	1.50	0.00
8,600.0	1.37	250.00	8,195.2	1,469.1	-1,983.5	2,467.0	0.00	0.00	0.00
8,700.0	1.37	250.00	8,295.2	1,468.3	-1,985.8	2,468.4	0.00	0.00	0.00

<b>Database:</b>	EDM 5000.1 Single User Db	<b>Local Co-ordinate Reference:</b>	Well BJU M23A FED 24A-22 496 - Slot 24A-22
<b>Company:</b>	Caerus Oil & Gas	<b>TVD Reference:</b>	RKB @ 8134.0usft (30')
<b>Project:</b>	Garfield County, CO	<b>MD Reference:</b>	RKB @ 8134.0usft (30')
<b>Site:</b>	BJU M23A 496 Pad	<b>North Reference:</b>	True
<b>Well:</b>	BJU M23A FED 24A-22 496	<b>Survey Calculation Method:</b>	Minimum Curvature
<b>Wellbore:</b>	Wellbore #1		
<b>Design:</b>	Design #3		

**Planned Survey**

Measured Depth (usft)	Inclination (°)	Azimuth (°)	Vertical Depth (usft)	+N/-S (usft)	+E/-W (usft)	Vertical Section (usft)	Dogleg Rate (°/100usft)	Build Rate (°/100usft)	Turn Rate (°/100usft)
8,800.0	1.37	250.00	8,395.2	1,467.5	-1,988.0	2,469.8	0.00	0.00	0.00
<b>Williams Fork</b>									
8,888.9	1.37	250.00	8,484.0	1,466.7	-1,990.0	2,471.0	0.00	0.00	0.00
8,900.0	1.37	250.00	8,495.1	1,466.6	-1,990.3	2,471.2	0.00	0.00	0.00
9,000.0	1.37	250.00	8,595.1	1,465.8	-1,992.5	2,472.6	0.00	0.00	0.00
9,100.0	1.37	250.00	8,695.1	1,465.0	-1,994.8	2,474.0	0.00	0.00	0.00
9,200.0	1.37	250.00	8,795.0	1,464.2	-1,997.1	2,475.3	0.00	0.00	0.00
9,300.0	1.37	250.00	8,895.0	1,463.4	-1,999.3	2,476.7	0.00	0.00	0.00
9,400.0	1.37	250.00	8,995.0	1,462.5	-2,001.6	2,478.1	0.00	0.00	0.00
9,500.0	1.37	250.00	9,095.0	1,461.7	-2,003.8	2,479.5	0.00	0.00	0.00
9,600.0	1.37	250.00	9,194.9	1,460.9	-2,006.1	2,480.9	0.00	0.00	0.00
9,700.0	1.37	250.00	9,294.9	1,460.1	-2,008.3	2,482.3	0.00	0.00	0.00
9,800.0	1.37	250.00	9,394.9	1,459.3	-2,010.6	2,483.7	0.00	0.00	0.00
9,900.0	1.37	250.00	9,494.8	1,458.4	-2,012.8	2,485.1	0.00	0.00	0.00
10,000.0	1.37	250.00	9,594.8	1,457.6	-2,015.1	2,486.4	0.00	0.00	0.00
10,100.0	1.37	250.00	9,694.8	1,456.8	-2,017.3	2,487.8	0.00	0.00	0.00
10,200.0	1.37	250.00	9,794.7	1,456.0	-2,019.6	2,489.2	0.00	0.00	0.00
10,300.0	1.37	250.00	9,894.7	1,455.2	-2,021.8	2,490.6	0.00	0.00	0.00
10,400.0	1.37	250.00	9,994.7	1,454.3	-2,024.1	2,492.0	0.00	0.00	0.00
10,500.0	1.37	250.00	10,094.7	1,453.5	-2,026.3	2,493.4	0.00	0.00	0.00
10,600.0	1.37	250.00	10,194.6	1,452.7	-2,028.6	2,494.8	0.00	0.00	0.00
10,700.0	1.37	250.00	10,294.6	1,451.9	-2,030.8	2,496.1	0.00	0.00	0.00
10,800.0	1.37	250.00	10,394.6	1,451.1	-2,033.1	2,497.5	0.00	0.00	0.00
10,900.0	1.37	250.00	10,494.5	1,450.2	-2,035.3	2,498.9	0.00	0.00	0.00
11,000.0	1.37	250.00	10,594.5	1,449.4	-2,037.6	2,500.3	0.00	0.00	0.00
11,100.0	1.37	250.00	10,694.5	1,448.6	-2,039.9	2,501.7	0.00	0.00	0.00
11,200.0	1.37	250.00	10,794.5	1,447.8	-2,042.1	2,503.1	0.00	0.00	0.00
11,300.0	1.37	250.00	10,894.4	1,447.0	-2,044.4	2,504.5	0.00	0.00	0.00
11,400.0	1.37	250.00	10,994.4	1,446.1	-2,046.6	2,505.8	0.00	0.00	0.00
11,500.0	1.37	250.00	11,094.4	1,445.3	-2,048.9	2,507.2	0.00	0.00	0.00
11,600.0	1.37	250.00	11,194.3	1,444.5	-2,051.1	2,508.6	0.00	0.00	0.00
<b>Cameo</b>									
11,694.7	1.37	250.00	11,289.0	1,443.7	-2,053.3	2,509.9	0.00	0.00	0.00
11,700.0	1.37	250.00	11,294.3	1,443.7	-2,053.4	2,510.0	0.00	0.00	0.00
11,800.0	1.37	250.00	11,394.3	1,442.9	-2,055.6	2,511.4	0.00	0.00	0.00
11,900.0	1.37	250.00	11,494.3	1,442.0	-2,057.9	2,512.8	0.00	0.00	0.00
12,000.0	1.37	250.00	11,594.2	1,441.2	-2,060.1	2,514.2	0.00	0.00	0.00
12,100.0	1.37	250.00	11,694.2	1,440.4	-2,062.4	2,515.6	0.00	0.00	0.00
<b>Rollins</b>									
12,194.8	1.37	250.00	11,789.0	1,439.6	-2,064.5	2,516.9	0.00	0.00	0.00
12,200.0	1.37	250.00	11,794.2	1,439.6	-2,064.6	2,516.9	0.00	0.00	0.00
12,300.0	1.37	250.00	11,894.1	1,438.8	-2,066.9	2,518.3	0.00	0.00	0.00
12,400.0	1.37	250.00	11,994.1	1,437.9	-2,069.1	2,519.7	0.00	0.00	0.00
12,500.0	1.37	250.00	12,094.1	1,437.1	-2,071.4	2,521.1	0.00	0.00	0.00
12,600.0	1.37	250.00	12,194.1	1,436.3	-2,073.6	2,522.5	0.00	0.00	0.00
<b>TD @ 12695.0' MD / 12289.0' TVD</b>									
12,695.0	1.37	250.00	12,289.0	1,435.5	-2,075.8	2,523.8	0.00	0.00	0.00

<b>Database:</b>	EDM 5000.1 Single User Db	<b>Local Co-ordinate Reference:</b>	Well BJU M23A FED 24A-22 496 - Slot 24A-22
<b>Company:</b>	Caerus Oil & Gas	<b>TVD Reference:</b>	RKB @ 8134.0usft (30')
<b>Project:</b>	Garfield County, CO	<b>MD Reference:</b>	RKB @ 8134.0usft (30')
<b>Site:</b>	BJU M23A 496 Pad	<b>North Reference:</b>	True
<b>Well:</b>	BJU M23A FED 24A-22 496	<b>Survey Calculation Method:</b>	Minimum Curvature
<b>Wellbore:</b>	Wellbore #1		
<b>Design:</b>	Design #3		

#### Design Targets

Target Name - hit/miss target - Shape	Dip Angle (°)	Dip Dir. (°)	TVD (usft)	+N/-S (usft)	+E/-W (usft)	Northing (usft)	Easting (usft)	Latitude	Longitude
OHCR - 24A-22 - plan hits target center - Point	0.00	0.00	8,073.0	1,469.7	-1,981.8	14,425,321.38	2,443,055.23	39.688322	-108.147179
PBHL - 24A-22 - plan hits target center - Ellipse (radii L100.0 W50.0 on 250.00 azi)	0.00	0.00	12,289.0	1,435.5	-2,075.8	14,425,284.20	2,442,962.40	39.688228	-108.147513

#### Formations

Measured Depth (usft)	Vertical Depth (usft)	Name	Lithology	Dip (°)	Dip Direction (°)
3,537.2	3,383.0	Wasatch			
6,078.2	5,783.0	Wasatch G			
6,395.8	6,083.0	Fort Union			
8,477.8	8,073.0	Ohio Creek			
8,888.9	8,484.0	Williams Fork			
11,694.7	11,289.0	Cameo			
12,194.8	11,789.0	Rollins			

#### Plan Annotations

Measured Depth (usft)	Vertical Depth (usft)	Local Coordinates		Comment
		+N/-S (usft)	+E/-W (usft)	
300.0	300.0	0.0	0.0	Build 3° / 100'
466.7	466.5	0.0	-7.3	EOB @ 5.00° Inc. / 270.00° Azm / Build 3° / 100'
982.2	969.8	51.2	-97.9	EOB @ 19.18° Inc. / 306.98° Azm
7,838.5	7,445.6	1,406.0	-1,897.2	Drop 3° / 100'
8,477.8	8,073.0	1,469.7	-1,981.8	EOD @ Vertical / Build 1.5° / 100'
8,569.4	8,164.6	1,469.3	-1,982.8	EOB @ 1.37° Inc. / 250.00° Azm
12,695.0	12,289.0	1,435.5	-2,075.8	TD @ 12695.0' MD / 12289.0' TVD