

**KT Resources
Ward Federal 30-21
Location # 316269**



Tank battery



Meter house



**KT Resources
Ward Federal 30-21
Location # 316269**



Separator



Well head



COLORADO
Oil & Gas Conservation
Commission
Department of Natural Resources

KT Resources
Ward Federal 30-21
Location # 316269



Access road lack of and/or insufficient BMP's, Lack of stabilization/compaction



Access road lack of and/or insufficient BMP's, Lack of stabilization/compaction



KT Resources
Ward Federal 30-21
Location # 316269

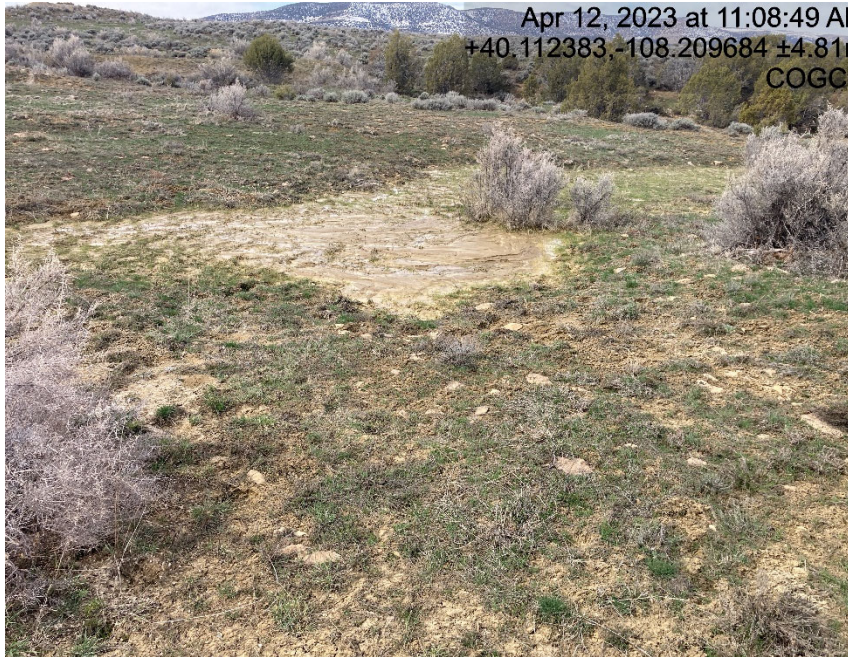


Access road lack of and/or insufficient BMP's, Lack of stabilization/compaction



Access road lack of and/or insufficient BMP's, Lack of stabilization/compaction

**KT Resources
Ward Federal 30-21
Location # 316269**



Sediment migration choking out vegetation



Sediment migration choking out vegetation



**KT Resources
Ward Federal 30-21
Location # 316269**



**Outlet of culvert and sediment migration from
access road**



Access road lack of and/or insufficient BMP's



KT Resources
Ward Federal 30-21
Location # 316269



Inlet of culvert failing and sediment migration from access road



Inlet of culvert failing and sediment migration from access road



KT Resources
Ward Federal 30-21
Location # 316269



**Outlet of culvert and sediment migration from
access road**



**Outlet of culvert and sediment migration from
access road**



**KT Resources
Ward Federal 30-21
Location # 316269**



Sink hole next to well head (rathole)



Lack of BMP's

**KT Resources
Ward Federal 30-21
Location # 316269**



Erosion from location with sediment migration/lack of BMP'S



Erosion from location with sediment migration



KT Resources
Ward Federal 30-21
Location # 316269



Erosion from location



Erosion channel from location

KT Resources
Ward Federal 30-21
Location # 316269



Erosion channel from location



Chemical containment is full of fluid

