

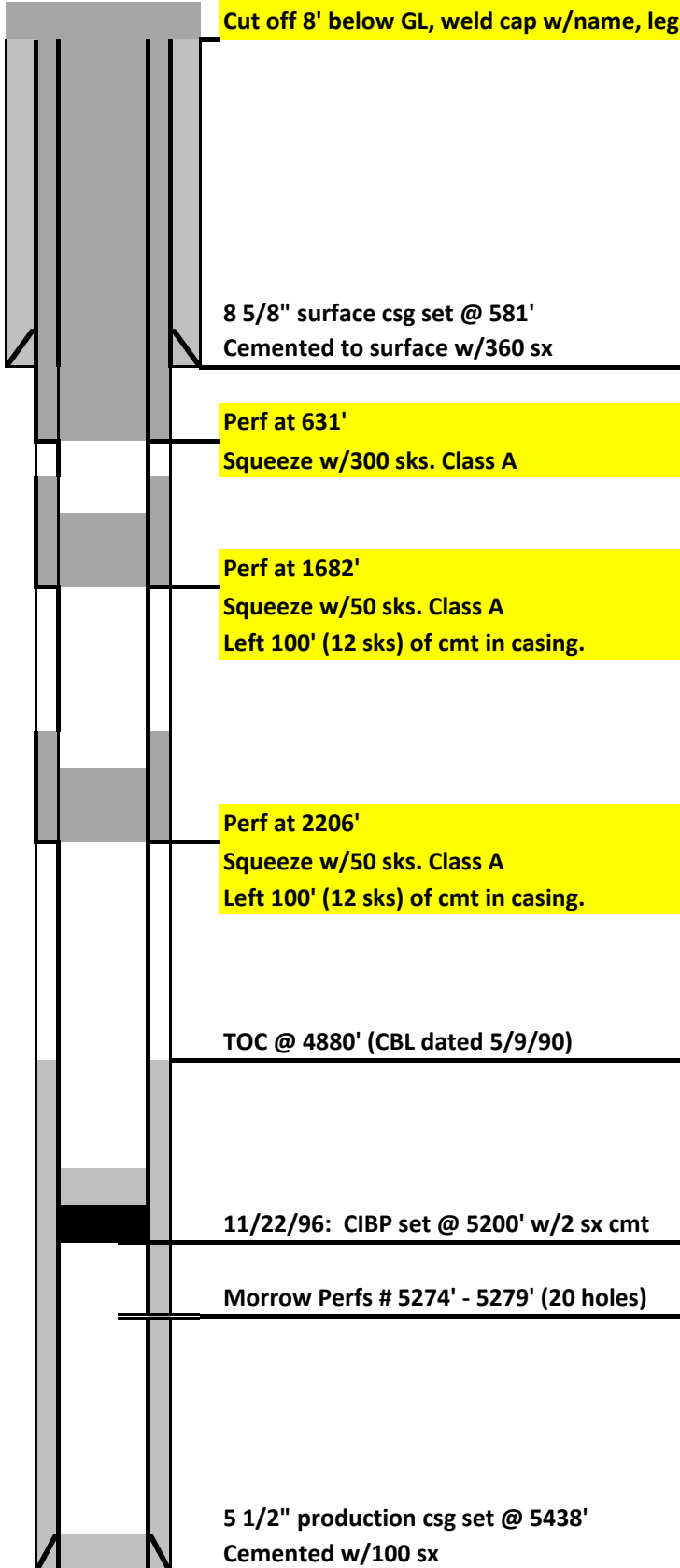


DRILLING COMPANY, INC.
WICHITA, KANSAS

Final P&A Wellbore Diagram

Pump 160 sxs down 5-1/2" casing and bradenhead.

Cut off 8' below GL, weld cap w/name, legal location, API number & date.



Date:	8/11/2022
Well Name:	NWAU #24
F/K/A:	Arends #4
Former Op:	MDC
Location:	460' FNL & 750' FWL NW/4 NW/4 6-14S-42W
County:	Cheyenne
State:	Colorado
API:	05-017-07135
GL:	4027'
KB:	4039'
Spud Date:	4/23/1990
DFP Morrow:	6/11/1990
Status:	6/13/90: SI 4/2/92: TA'd 3/30/2023: P&A

Formation	Log Top
NIOBRARA	600 ft.
FORT HAYS	1294 ft.
CODELL	1355 ft.
CARLILE	1373 ft.
GREENHORN	1540 ft.
DAKOTA	1732 ft.
CHEYENNE	2052 ft.
MORRISON	2156 ft.
BLAINE	2580 ft.
CEDAR HILLS	2836 ft.
NEVA	3652 ft.
SHAWNEE	4060 ft.
LANSING	4320 ft.
MARMATON	4696 ft.
CHEROKEE K	4869 ft.
MORROW	5161 ft.
KEYES	5284 ft.
SPERGEN	5396 ft.

PBTD = 5180'
 RTD = 5450'

5 1/2" production csg set @ 5438'
 Cemented w/100 sx