

TEP ROCKY MOUNTAIN LLC, CHEVRON-66S96W/29SWNE

Location # 335298



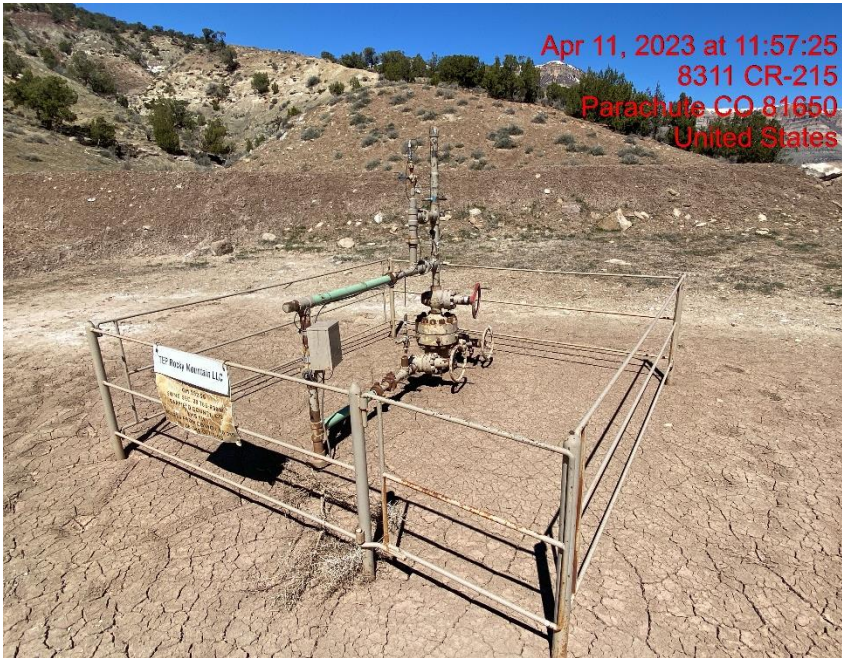
Location – Photo #02096



Wellhead – Photo #02097

TEP ROCKY MOUNTAIN LLC, CHEVRON-66S96W/29SWNE

Location # 335298



Wellhead – Photo #02098



Separator – Photo #02099



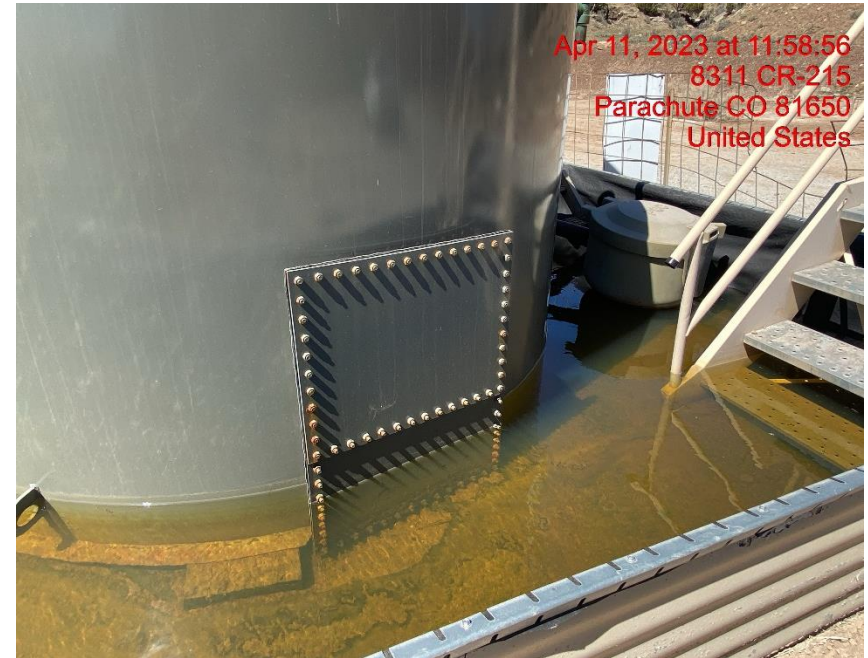
COLORADO
Oil & Gas Conservation
Commission
Department of Natural Resources

TEP ROCKY MOUNTAIN LLC, CHEVRON-66S96W/29SWNE

Location # 335298



Tank Battery – Photo #02100



Inadequate Berm Capacity – Photo #02102

TEP ROCKY MOUNTAIN LLC, CHEVRON-66S96W/29SWNE

Location # 335298



**No BMP Installed Around Stockpiled Soil – Photo
#02104**