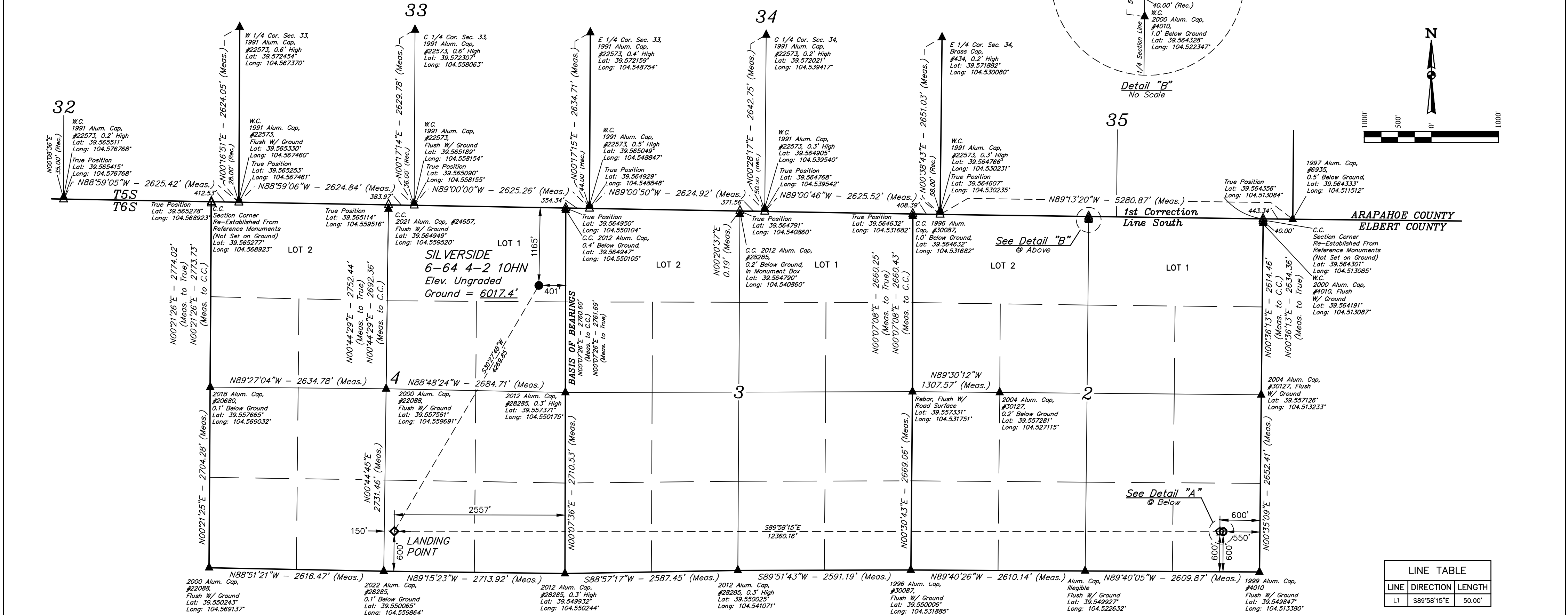


SILVERSIDE 6-64 4-2 10HN
LOT 1, SECTION 4, T6S, R64W, 6th P.M.
ELBERT COUNTY, COLORADO

BASIS OF ELEVATION
OPUS SOLUTION GENERATED NAVD 88



LINE TABLE		
LINE	DIRECTION	LENGTH
L1	S89°58'15"E	50.00'

LEGEND:
● = PROPOSED WELL HEAD.
◇ = LANDING POINT.
○ = LAST TAKE POINT.
○ = BOTTOM HOLE.
▲ = SECTION CORNERS LOCATED. (NAD 83)
△ = SECTION CORNERS RE-ESTABLISHED. (Not Set on Ground.) (NAD 83)

NOTE:
Distances referenced on plat to section lines are perpendicular.

NAD 83 (SURFACE LOCATION)			
LATITUDE = 39°33'42.39" (39.561776°)	LATITUDE = 39°33'06.14" (39.551704°)	LATITUDE = 39°33'05.44" (39.551512°)	LATITUDE = 39°33'05.44" (39.551512°)
LONGITUDE = 104°33'05.60" (104.551554°)	LONGITUDE = 104°33'33.46" (104.559294°)	LONGITUDE = 104°30'55.70" (104.515473°)	LONGITUDE = 104°30'55.07" (104.515296°)

UELTS, LLC
Corporate Office * 85 South 200 East
Vernal, UT 84078 * (435) 789-1017

ENGINEERING & LAND SURVEYING

SURVEYED BY ORION RICE, J.W.
DRAWN BY J.J.

05-10-22
06-03-22

SCALE
1" = 1000'

WELL LOCATION PLAT

CERTIFICATE OF RECORDING
THIS IS TO CERTIFY THAT THE ABOVE NOTED SURVEY WAS MADE AND RECORDED UNDER MY SUPERVISION AND THAT THE SAME ARE TRUE AND CORRECT TO THE BEST OF MY KNOWLEDGE AND BELIEF.

RECORDED LAND SURVEYOR
REGISTRATION NO. 28285
STATE OF COLORADO

6-23-23