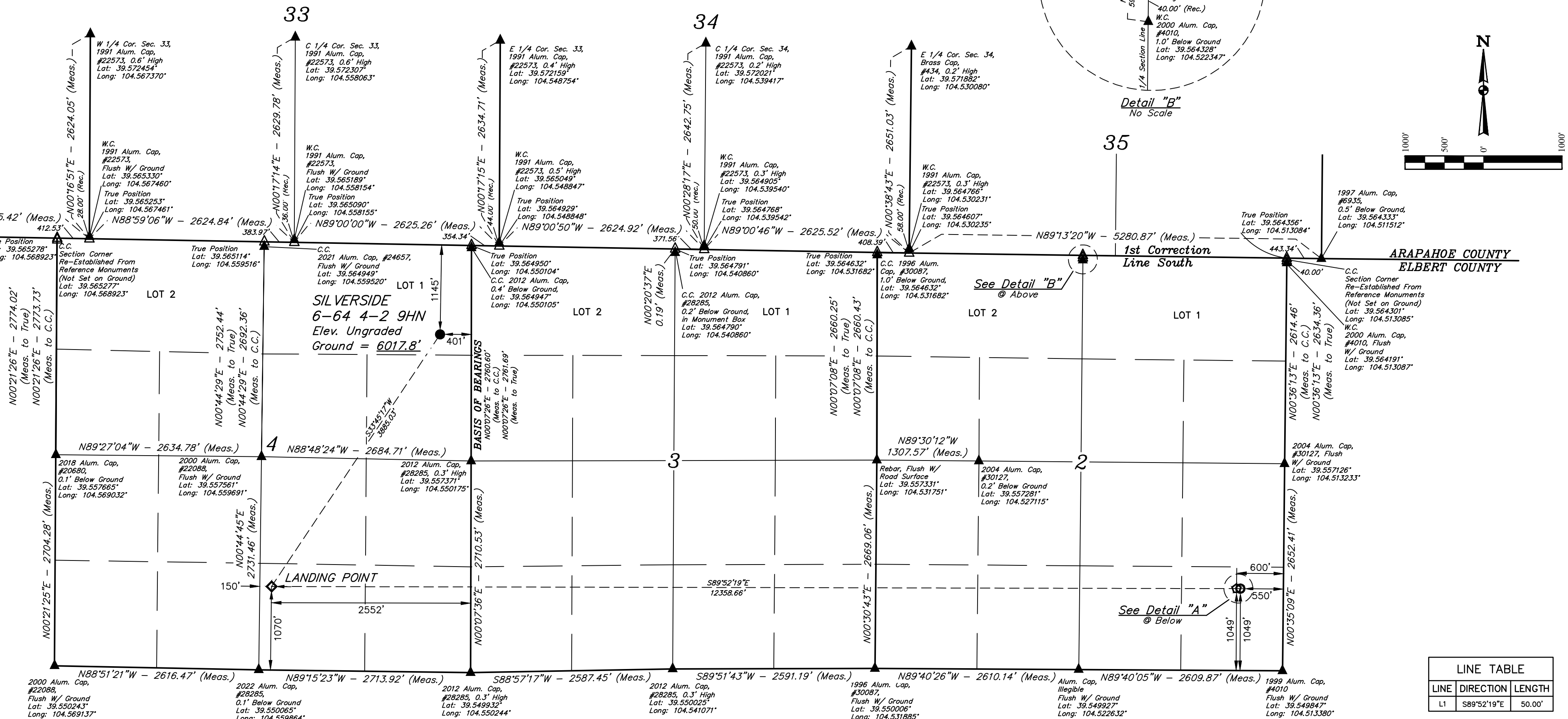


**GMT EXPLORATION COMPANY, LLC**

**SILVERSIDE 6-64 4-2 9HN  
LOT 1, SECTION 4, T6S, R64W, 6th P.M.  
ELBERT COUNTY, COLORADO**

**BASIS OF ELEVATION**  
OPUS SOLUTION GENERATED NAVD 88



**LEGEND:**

- = PROPOSED WELLHEAD.
- ◆ = LANDING POINT.
- ☆ = LAST TAKE POINT.
- = BOTTOM HOLE.
- ▲ = SECTION CORNERS LOCATED. (NAD 83)
- △ = SECTION CORNERS RE-ESTABLISHED.  
(Not Set on Ground.) (NAD 83)

**NOTE:**  
Distances referenced  
on plat to section lines  
are perpendicular.

Diagram illustrating the plan view of a circular structure, likely a culvert or tunnel, showing the relationship between the 'LAST TAKE' POINT and the 'BOTTOM HOLE'.

- The structure is represented by a dashed circle.
- The 'LAST TAKE' POINT is marked on the left side of the circle.
- The 'BOTTOM HOLE' is marked on the right side of the circle.
- The horizontal distance between the 'LAST TAKE' POINT and the 'BOTTOM HOLE' is labeled as 600'.
- The vertical distance from the centerline (indicated by a dashed line) to the 'LAST TAKE' POINT is labeled as 1049'.
- The vertical distance from the centerline to the 'BOTTOM HOLE' is labeled as 550'.
- The horizontal distance from the centerline to the 'BOTTOM HOLE' is labeled as L1.

*Detail "A"*  
No Scale

THIS IS TO CERTIFY THAT THE ABOVE IS A TRUE AND FAITHFUL SUMMARY OF THE NOTES OF ACTUAL SURVEYS MADE BY ME OR UNDER MY SUPERVISION, AND THAT THE SAME ARE TRUE AND CORRECT TO THE BEST OF MY KNOWLEDGE AND BELIEF.

REGISTERED LAND SURVEYOR  
REGISTRATION NO. 28285  
STATE OF TEXAS

03-23-23



**UINTAH**  
ENGINEERING & LAND SURVEYING

**UELS, LLC**  
Corporate Office \* 85 South 200 East  
Vernal, UT 84078 \* (435) 789-1017

<b>SURVEYED BY</b>	ORION RICE, J.W.	05-10-22	<b>SCALE</b>
<b>DRAWN BY</b>	J.J.	06-03-22	1" = 1000'

WELL LOCATION PLAT

				REV: 3	03-31-23	K.C.	(SHL MOVE)	DDP = 1.5
NAD 83 (SURFACE LOCATION)	NAD 83 (LANDING POINT)	NAD 83 (LAST TAKE POINT)	NAD 83 (BOTTOM HOLE)					
LATITUDE = 39°33'42.59" (39.561831°)	LATITUDE = 39°33'10.78" (39.552995°)	LATITUDE = 39°33'09.88" (39.552745°)	LATITUDE = 39°33'09.88" (39.552744°)					
LONGITUDE = 104°33'05.59" (104.551554°)	LONGITUDE = 104°33'33.35" (104.559264°)	LONGITUDE = 104°30'55.61" (104.515449°)	LONGITUDE = 104°30'54.98" (104.515271°)					