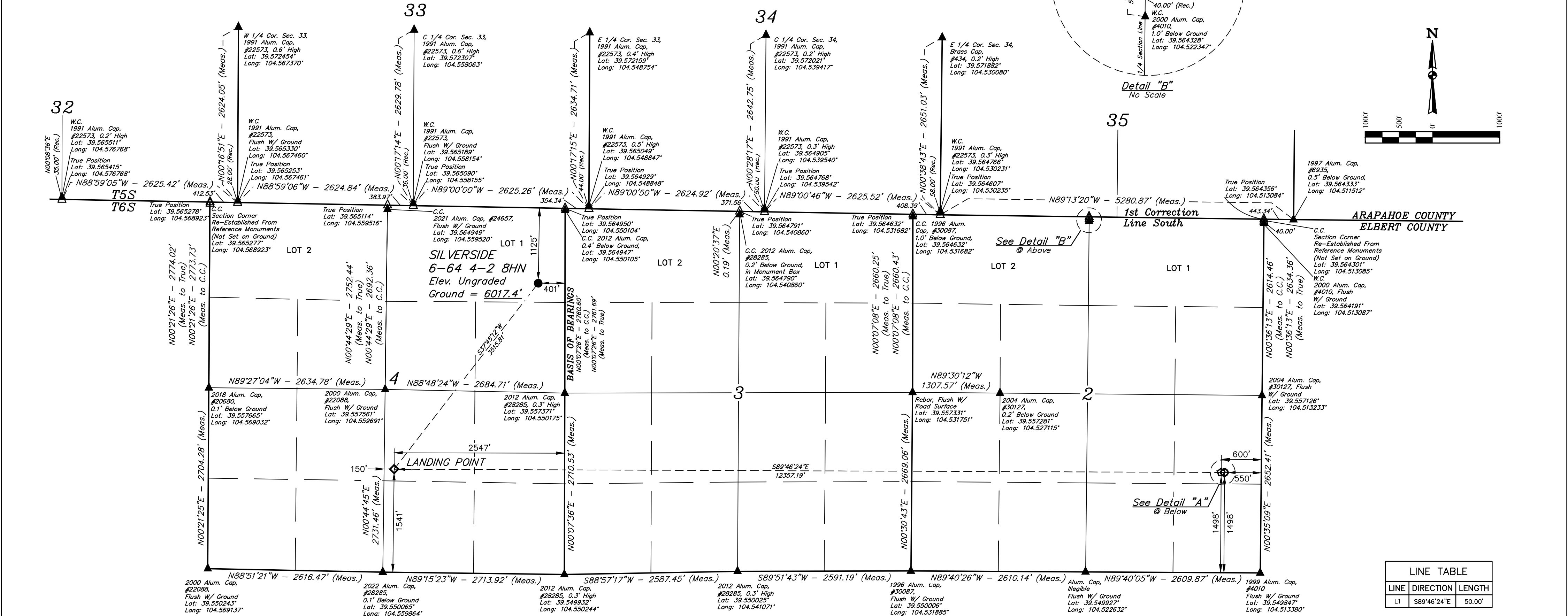


SILVERSIDE 6-64 4-2 8HN
LOT 1, SECTION 4, T6S, R64W, 6th P.M.
ELBERT COUNTY, COLORADO

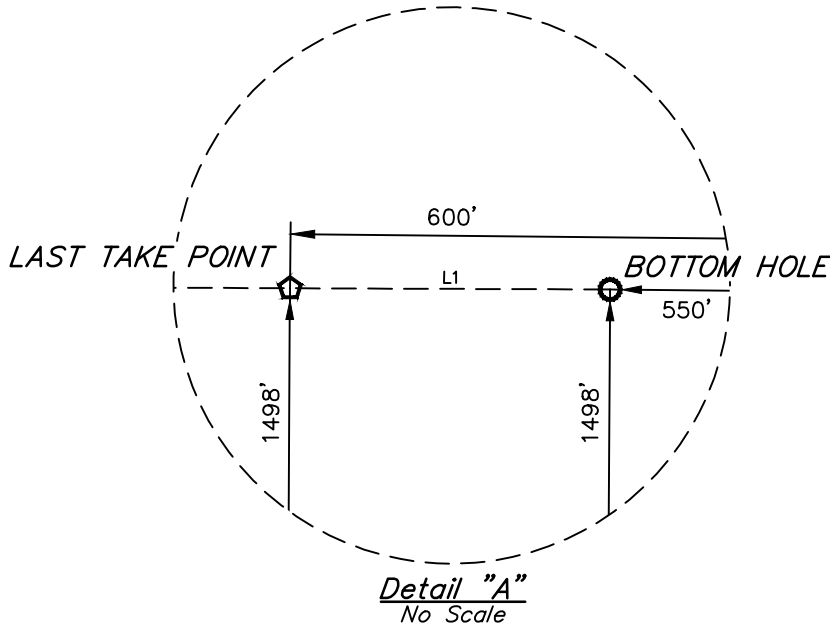
BASIS OF ELEVATION
OPUS SOLUTION GENERATED NAVD 88



LINE TABLE		
LINE	DIRECTION	LENGTH
L1	S89°46'24"E	50.00'

LEGEND:
● = PROPOSED WELLHEAD.
◇ = LANDING POINT.
○ = LAST TAKE POINT.
○ = BOTTOM HOLE.
▲ = SECTION CORNERS LOCATED. (NAD 83)
△ = SECTION CORNERS RE-ESTABLISHED. (Not Set on Ground.) (NAD 83)

NOTE:
Distances referenced on plat to section lines are perpendicular.



CERTIFICATE OF RECORDING
THIS IS TO CERTIFY THAT THE ABOVE NOTED SURVEY WAS MADE BY ME OR UNDER MY SUPERVISION AND THAT THE SAME ARE TRUE AND CORRECT TO THE BEST OF MY KNOWLEDGE AND BELIEF.
REGISTERED LAND SURVEYOR
RECORDATION NO. 28285
STATE OF COLORADO
J. J. WALLACE
6-23-23

UELS, LLC
Corporate Office * 85 South 200 East
Vernal, UT 84078 * (435) 789-1017
SILVER SIDE 6-64 4-2 8HN
WELL LOCATION PLAT

REV: 3 03-31-23 K.C. (SHL MOVE)			
NAD 83 (SURFACE LOCATION)	NAD 83 (LANDING POINT)	NAD 83 (LAST TAKE POINT)	NAD 83 (BOTTOM HOLE)
LATITUDE = 39°33'42.79" (39.561886°)	LATITUDE = 39°33'15.43" (39.554286°)	LATITUDE = 39°33'14.32" (39.553977°)	LATITUDE = 39°33'14.31" (39.553976°)
LONGITUDE = 104°33'05.59" (104.551553°)	LONGITUDE = 104°33'33.24" (104.559234°)	LONGITUDE = 104°30'55.53" (104.515424°)	LONGITUDE = 104°30'54.89" (104.515246°)