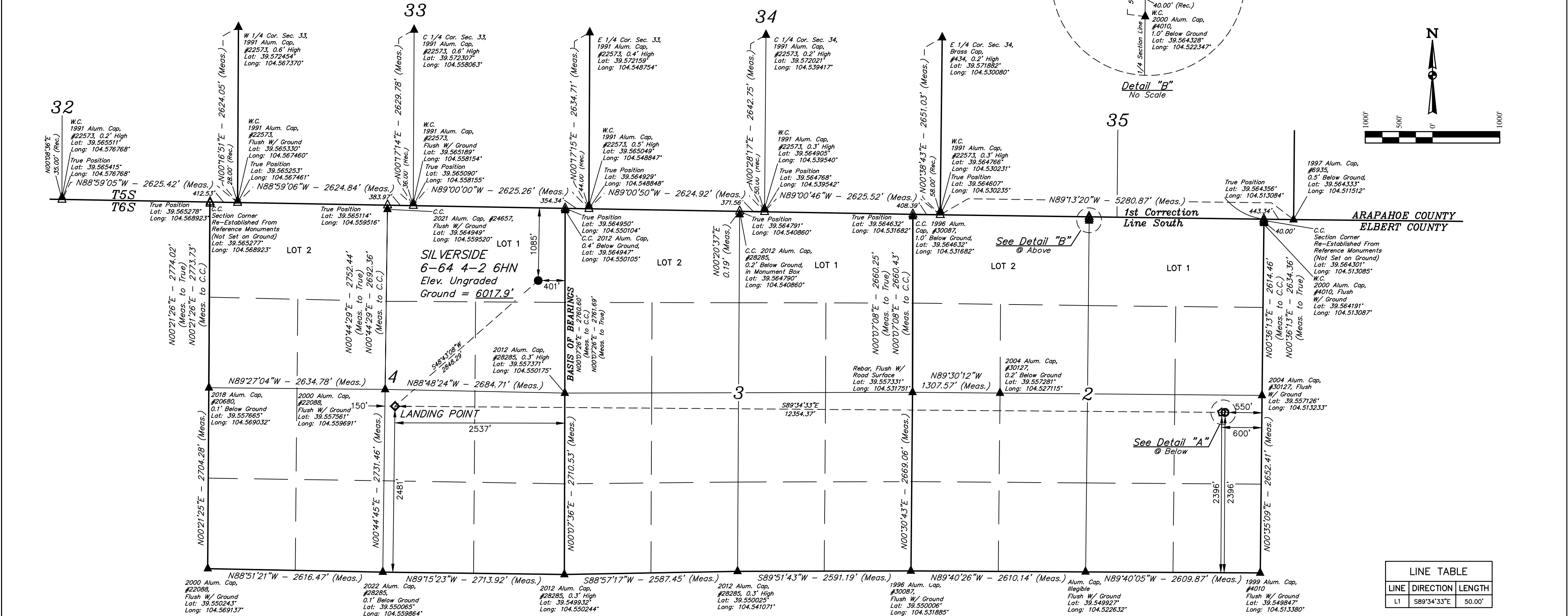


SILVERSIDE 6-64 4-2 6HN
LOT 1, SECTION 4, T6S, R64W, 6th P.M.
ELBERT COUNTY, COLORADO

BASIS OF ELEVATION
OPUS SOLUTION GENERATED NAVD 88



LINE TABLE		
LINE	DIRECTION	LENGTH
L1	S89°34'33"E	50.00'

LEGEND:
● = PROPOSED WELLHEAD.
◆ = LANDING POINT.
○ = LAST TAKE POINT.
○ = BOTTOM HOLE.
▲ = SECTION CORNERS LOCATED. (NAD 83)
△ = SECTION CORNERS RE-ESTABLISHED. (Not Set on Ground.) (NAD 83)

NOTE:
Distances referenced on plat to section lines are perpendicular.

NAD 83 (SURFACE LOCATION)			
LATITUDE = 39°33'43.18" (39.561996°)	LATITUDE = 39°33'24.72" (39.556867°)	LATITUDE = 39°33'23.19" (39.556442°)	LATITUDE = 39°33'23.18" (39.556440°)
LONGITUDE = 104°33'05.59" (104.551552°)	LONGITUDE = 104°33'33.03" (104.559175°)	LONGITUDE = 104°30'55.35" (104.515374°)	LONGITUDE = 104°30'54.71" (104.515197°)

UELS, LLC
Corporate Office * 85 South 200 East
Vernal, UT 84078 * (435) 789-1017

RECORDED LAND SURVEYOR
REGISTRATION NO. 28285
STATE OF COLORADO

WELL LOCATION PLAT