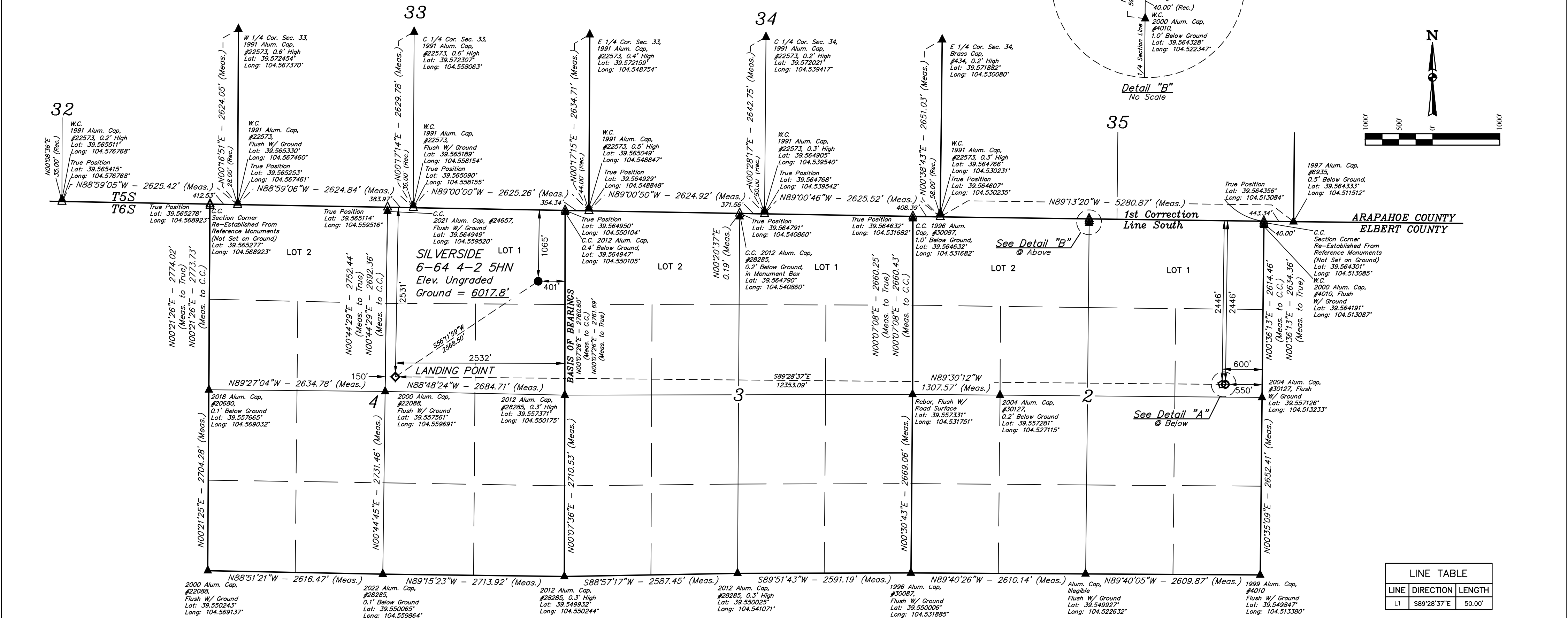


SILVERSIDE 6-64 4-2 5HN  
LOT 1, SECTION 4, T6S, R64W, 6th P.M.  
ELBERT COUNTY, COLORADO

BASIS OF ELEVATION  
OPUS SOLUTION GENERATED NAVD 88



LEGEND:  
● = PROPOSED WELLHEAD.  
◆ = LANDING POINT.  
○ = LAST TAKE POINT.  
○ = BOTTOM HOLE.  
▲ = SECTION CORNERS LOCATED. (NAD 83)  
△ = SECTION CORNERS RE-ESTABLISHED. (Not Set on Ground.) (NAD 83)

NOTE:  
Distances referenced on plat to section lines are perpendicular.

|   |  |   |  |
|---|--|---|--|
| REV: 3 03-31-23 K.C. (SHL MOVE)         |  |   |  |
| NAD 83 (SURFACE LOCATION)               |  | NAD 83 (LANDING POINT)                  |  |
| LATITUDE = 39°33'43.38" (39.562051°)    |  | LATITUDE = 39°33'29.37" (39.558158°)    |  |
| LONGITUDE = 104°33'05.59" (104.551552°) |  | LONGITUDE = 104°33'32.92" (104.559145°) |  |
| NAD 83 (LAST TAKE POINT)                |  | NAD 83 (BOTTOM HOLE)                    |  |
| LATITUDE = 39°33'27.63" (39.557674°)    |  | LATITUDE = 39°33'27.62" (39.557672°)    |  |
| LONGITUDE = 104°30'55.26" (104.515349°) |  | LONGITUDE = 104°30'54.62" (104.515172°) |  |

CERTIFICATE OF RECORDING  
THIS IS TO CERTIFY THAT THE ABOVE NOTED SURVEY WAS MADE AND RECORDED UNDER MY SUPERVISION AND THAT THE SAME ARE TRUE AND CORRECT TO THE BEST OF MY KNOWLEDGE AND BELIEF.

REGISTERED LAND SURVEYOR  
RECORDATION NO. 28285  
STATE OF COLORADO  
J. WALLACE  
03-31-23

UELS, LLC  
Corporate Office \* 85 South 200 East  
Vernal, UT 84078 \* (435) 789-1017

ENGINEERING & LAND SURVEYING  
SURVEYED BY ORION RICE, J.W.  
DRAWN BY J.J.  
WELL LOCATION PLAT

05-10-22  
06-03-22  
SCALE  
1" = 1000'