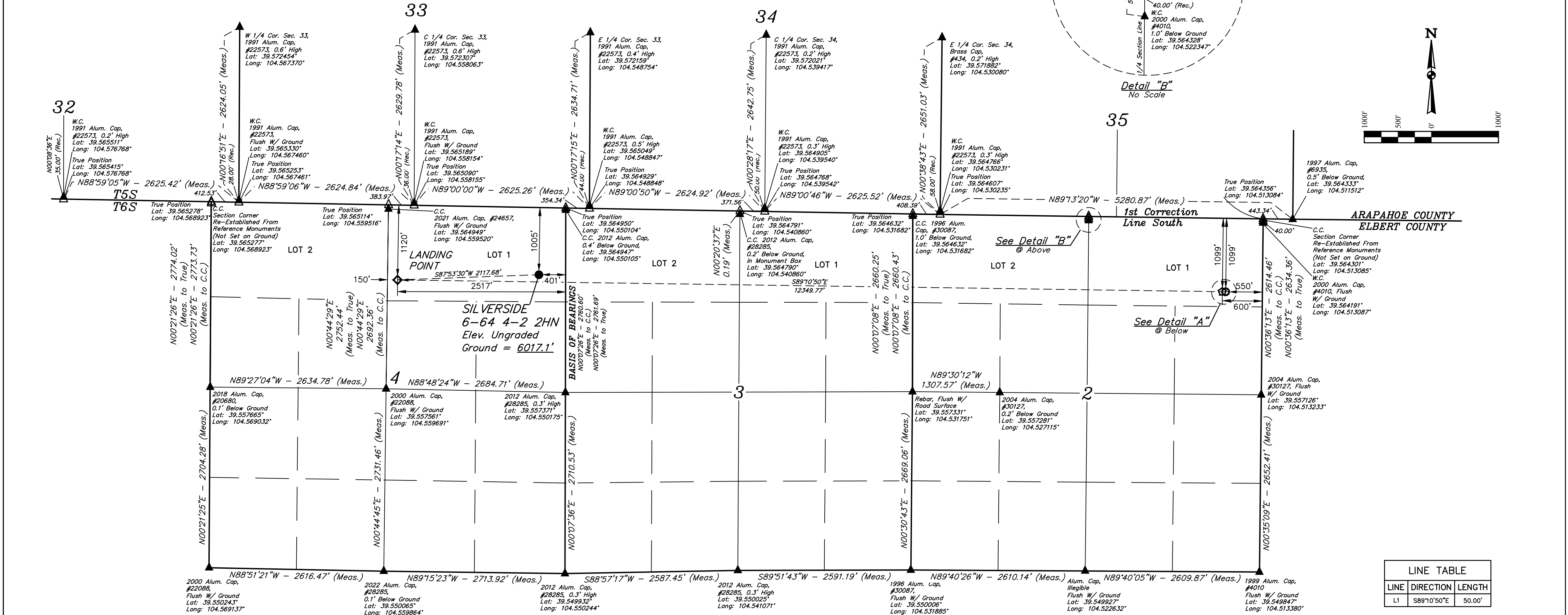


SILVERSIDE 6-64 4-2 2HN  
LOT 1, SECTION 4, T6S, R64W, 6th P.M.  
ELBERT COUNTY, COLORADO

BASIS OF ELEVATION  
OPUS SOLUTION GENERATED NAVD 88



LEGEND:  
● = PROPOSED WELLHEAD.  
◆ = LANDING POINT.  
○ = LAST TAKE POINT.  
○ = BOTTOM HOLE.  
▲ = SECTION CORNERS LOCATED. (NAD 83)  
△ = SECTION CORNERS RE-ESTABLISHED. (Not Set on Ground.) (NAD 83)

NOTE:  
Distances referenced on plat to section lines are perpendicular.

| REV: 3 03-31-23 K.C. (SHL MOVE)         |   |   |   |
|---|---|---|---|
| NAD 83 (SURFACE LOCATION)               | NAD 83 (LANDING POINT)                  | NAD 83 (LAST TAKE POINT)                | NAD 83 (BOTTOM HOLE)                    |
| LATITUDE = 39°33'43.97" (39.562215°)    | LATITUDE = 39°33'43.31" (39.562030°)    | LATITUDE = 39°33'40.94" (39.561371°)    | LATITUDE = 39°33'40.93" (39.561368°)    |
| LONGITUDE = 104°33'05.58" (104.551550°) | LONGITUDE = 104°33'32.60" (104.559056°) | LONGITUDE = 104°30'54.98" (104.515273°) | LONGITUDE = 104°30'54.34" (104.515096°) |

UELS, LLC  
Corporate Office \* 85 South 200 East  
Vernal, UT 84078 \* (435) 789-1017

ENGINEERING & LAND SURVEYING

SURVEYED BY ORION RICE, J.W.  
DRAWN BY J.J.

05-10-22  
06-03-22

SCALE  
1" = 1000'

WELL LOCATION PLAT