

## Inspection Photos

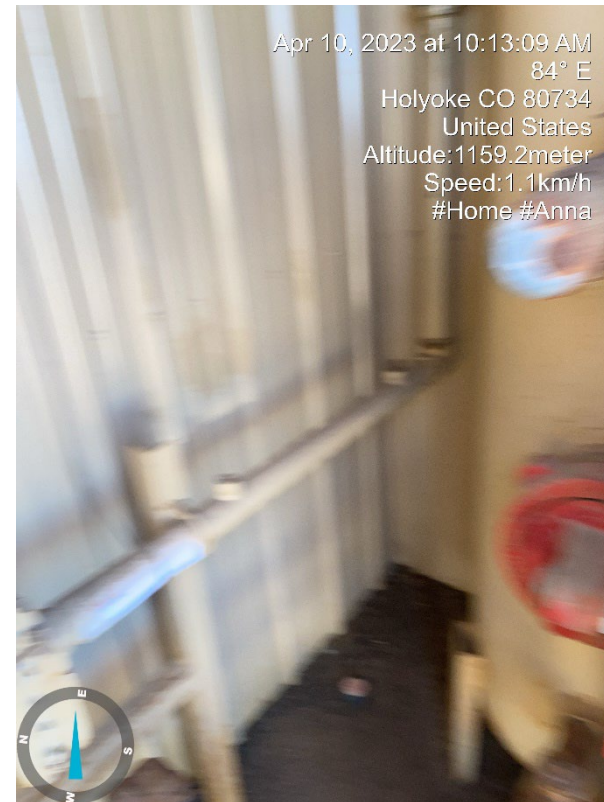
Operator: Omimex Petroleum Inc (66190)

Lease: Sagehorn 12-34-6-45

Facility ID/API, 440197 / 05-095-06470



1. Lease sign on Meter shed



2. Inside Meter shed, Vertical gas separator



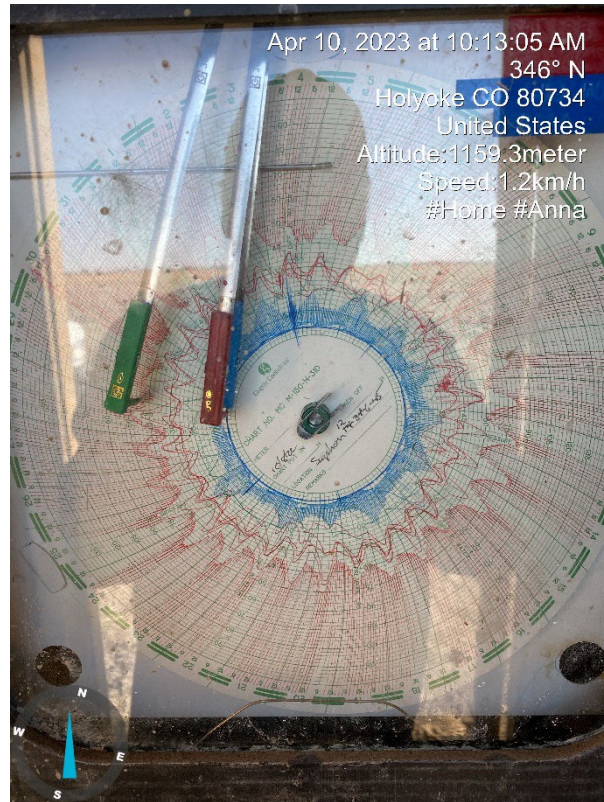
**COLORADO**  
Oil & Gas Conservation  
Commission  
Department of Natural Resources

## Inspection Photos

Operator: Omimex Petroleum Inc (66190)

Lease: Sagehorn 12-34-6-45

Facility ID/API, 440197 / 05-095-06470



3. Gas Meter, Chart has not been changed since 10/8/2022



4. Wellhead



**COLORADO**  
Oil & Gas Conservation  
Commission  
Department of Natural Resources

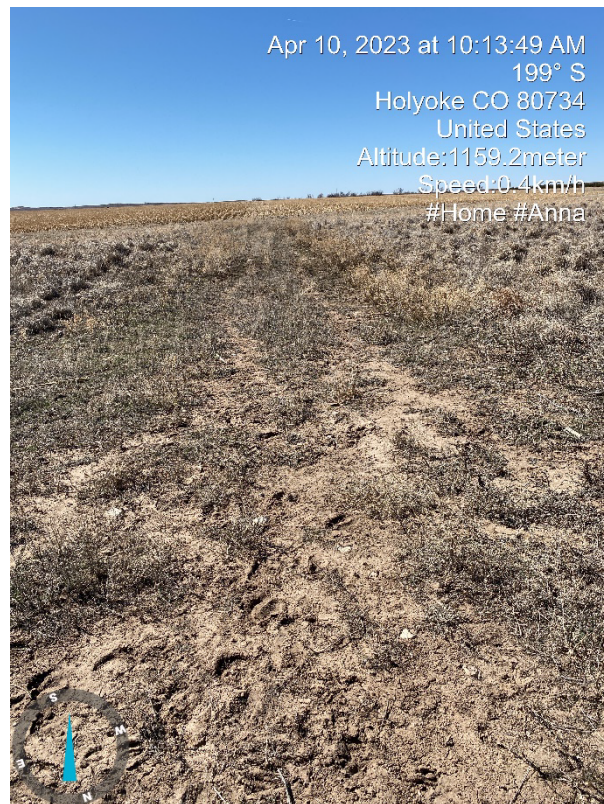


## Inspection Photos

Operator: Omimex Petroleum Inc (66190)

Lease: Sagehorn 12-34-6-45

Facility ID/API, 440197 / 05-095-06470



5. Road into location, no tracks



6. Well in crop circle

