



Radial Bond
Gamma Ray
Casing Collar Log

Company	Civitas Resources	Country	USA
Well	Anderson 41-32		
Field	Wattenberg		
County	Weld		
State	Colorado		
Location:	SEC 32 TWP 2N RGE 68W	API # : 05-123-21079	Other Services N/A
Permanent Datum	Ground Level	Elevation	4895'
Log Measured From	KB		
Drilling Measured From	KB		
		Elevation	K.B: 4911' D.F. G.L: 4895'

Date	07MAR2023
Run Number	One
Depth Driller	8170'
Depth Logger	3077'
Bottom Logged Interval	3081'
Top Log Interval	Surface
Open Hole Size	
Type Fluid	Water
Density / Viscosity	---
Max. Recorded Temp.	
Estimated Cement Top	
Time Well Ready	1415
Time Logger on Bottom	1445
Equipment Number	506
Location	Kersey, Co
Recorded By	J. Keel
Witnessed By	B. Chavez

Run Number	Borehole Record		Tubing Record				
	Bit	From	To	Size	Weight	From	To
Casing Record							
Surface String				Size	Wgt/Ft	Top	Bottom
Prot. String							
Production String				4.5"	11.6#		
Liner							

<<< Fold Here >>>

All interpretations are opinions based on inferences from electrical or other measurements and we cannot and do not guarantee the accuracy or correctness of any interpretation, and we shall not, except in the case of gross or willful negligence on our part, be liable or responsible for any loss, costs, damages, or expenses incurred or sustained by anyone resulting from any interpretation made by any of our officers, agents or employees. These interpretations are also subject to our general terms and conditions set out in our current Price Schedule.

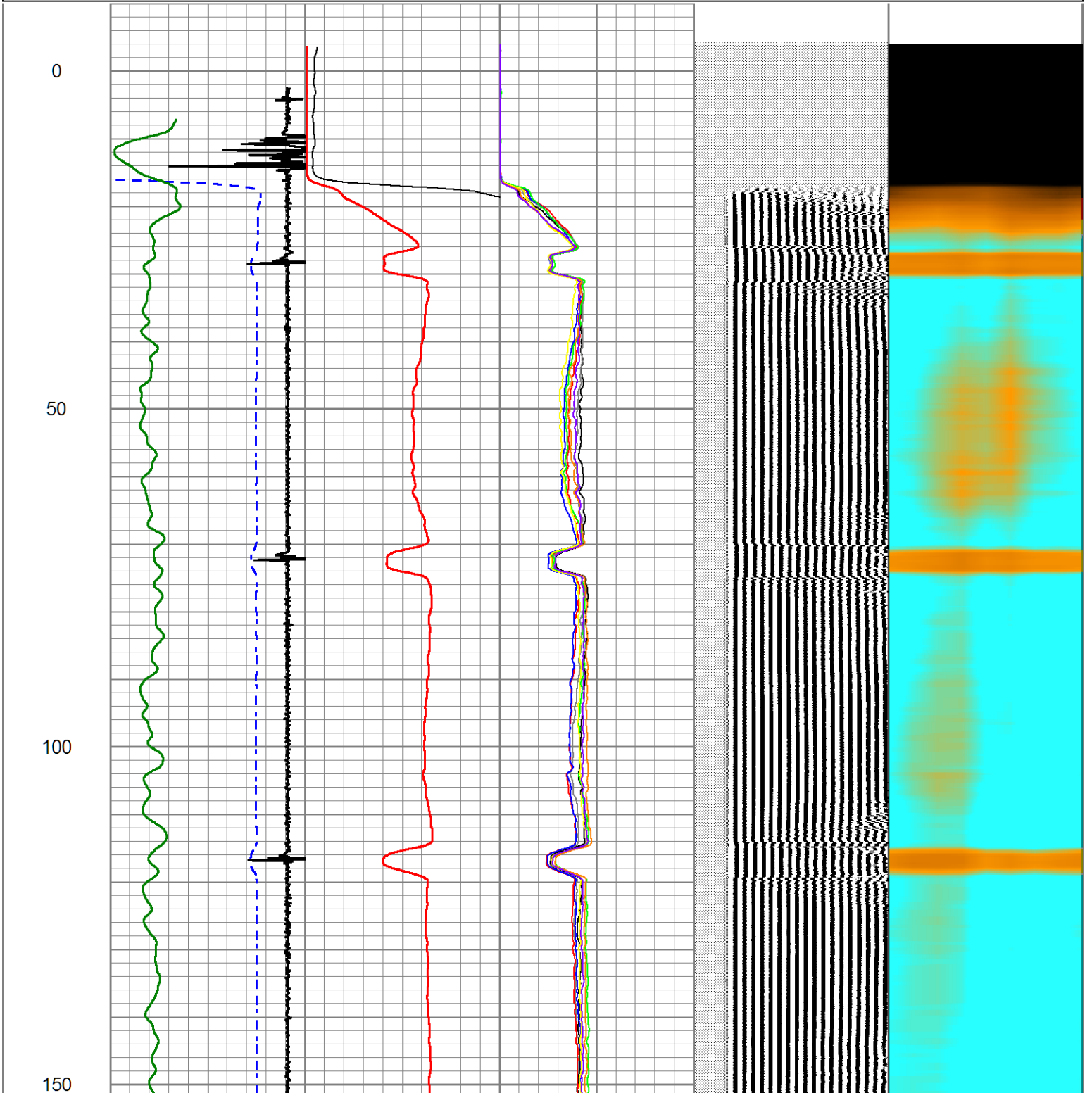
Comments



Main Pass "0" PSI

Database File civitas anderson 41-32.db
 Dataset Pathname run2/pass3
 Presentation Format civitas
 Dataset Creation Tue Mar 07 14:33:42 2023
 Charted by Depth in Feet scaled 1:240

400	TT (usec)	200	0	AMP (mV)	100	0	AMPS1	150	200	VDL (usec)	1200	1	RADIAL MAP	8
10	CCL\$1	-1	0	AMPx5 (mV)	20	0	AMPS2	150						
0	GR (GAPI)	150				0	AMPS3	150						
						0	AMPS4	150						
						0	AMPS5	150						
						0	AMPS6	150						
						0	AMPS7	150						
						0	AMPS8	150						

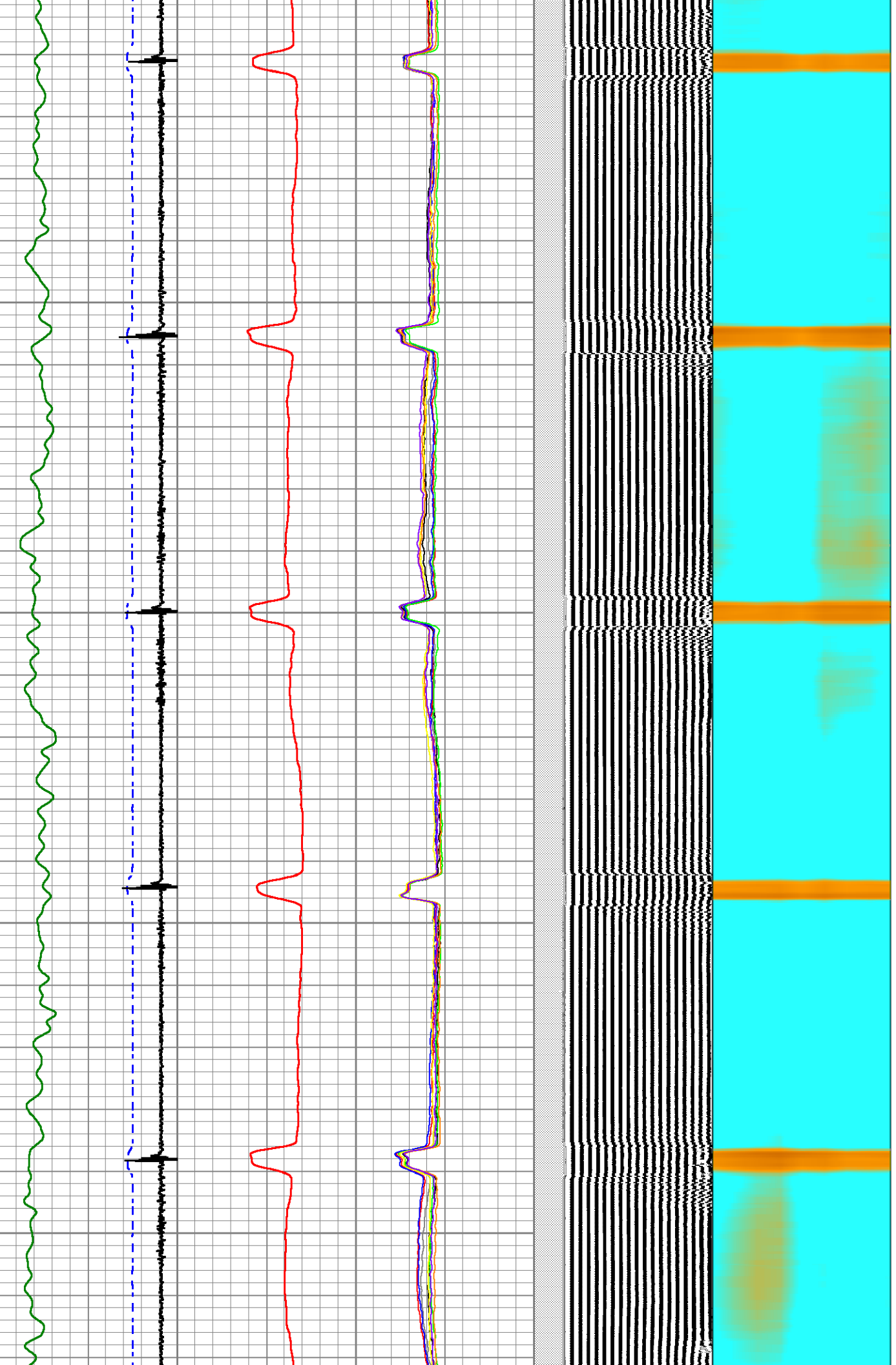


200

250

300

350

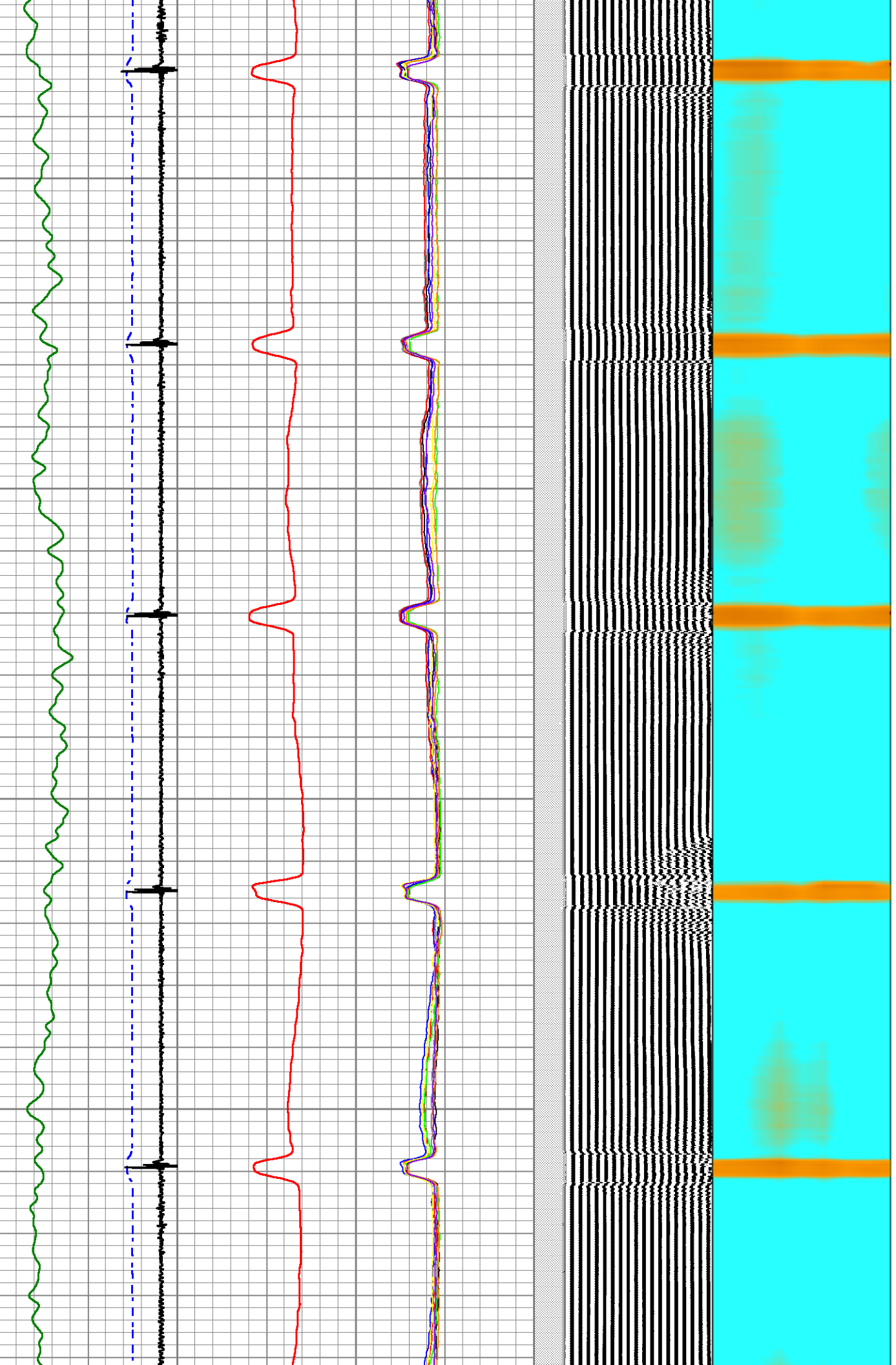


400

450

500

550



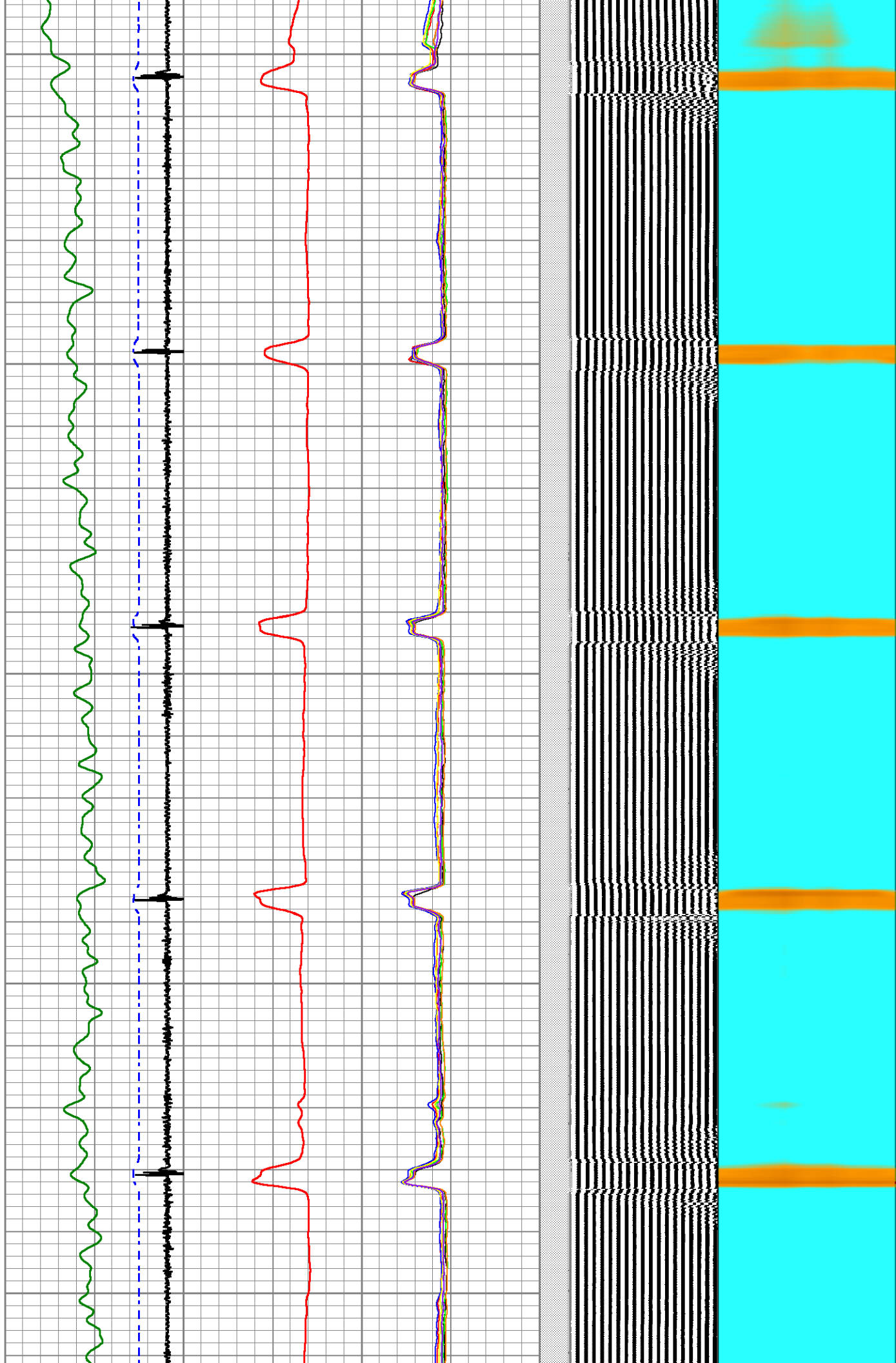
600

650

700

750

800



850

900

950

1000



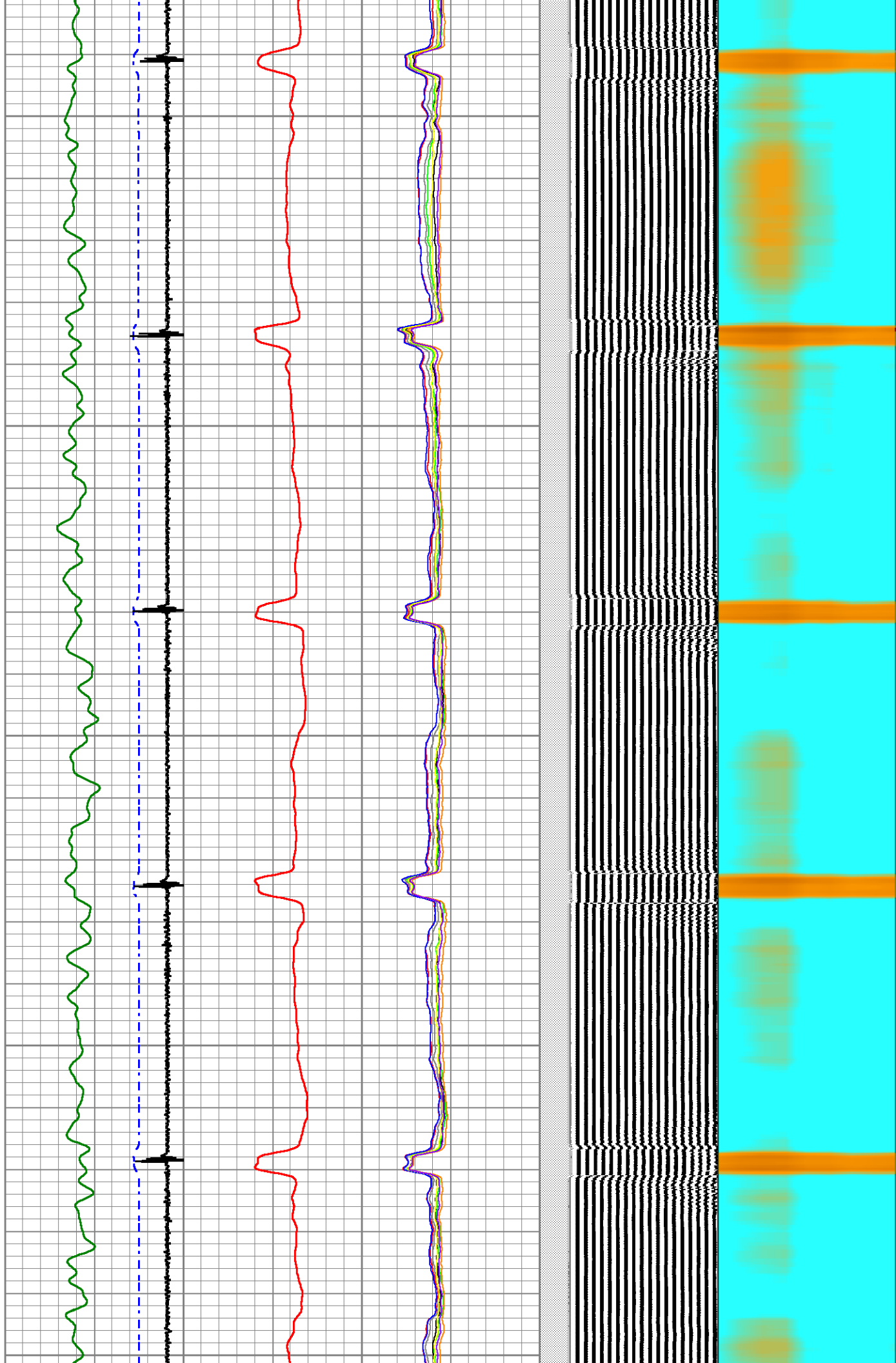
1050

1100

1150

1200

1250

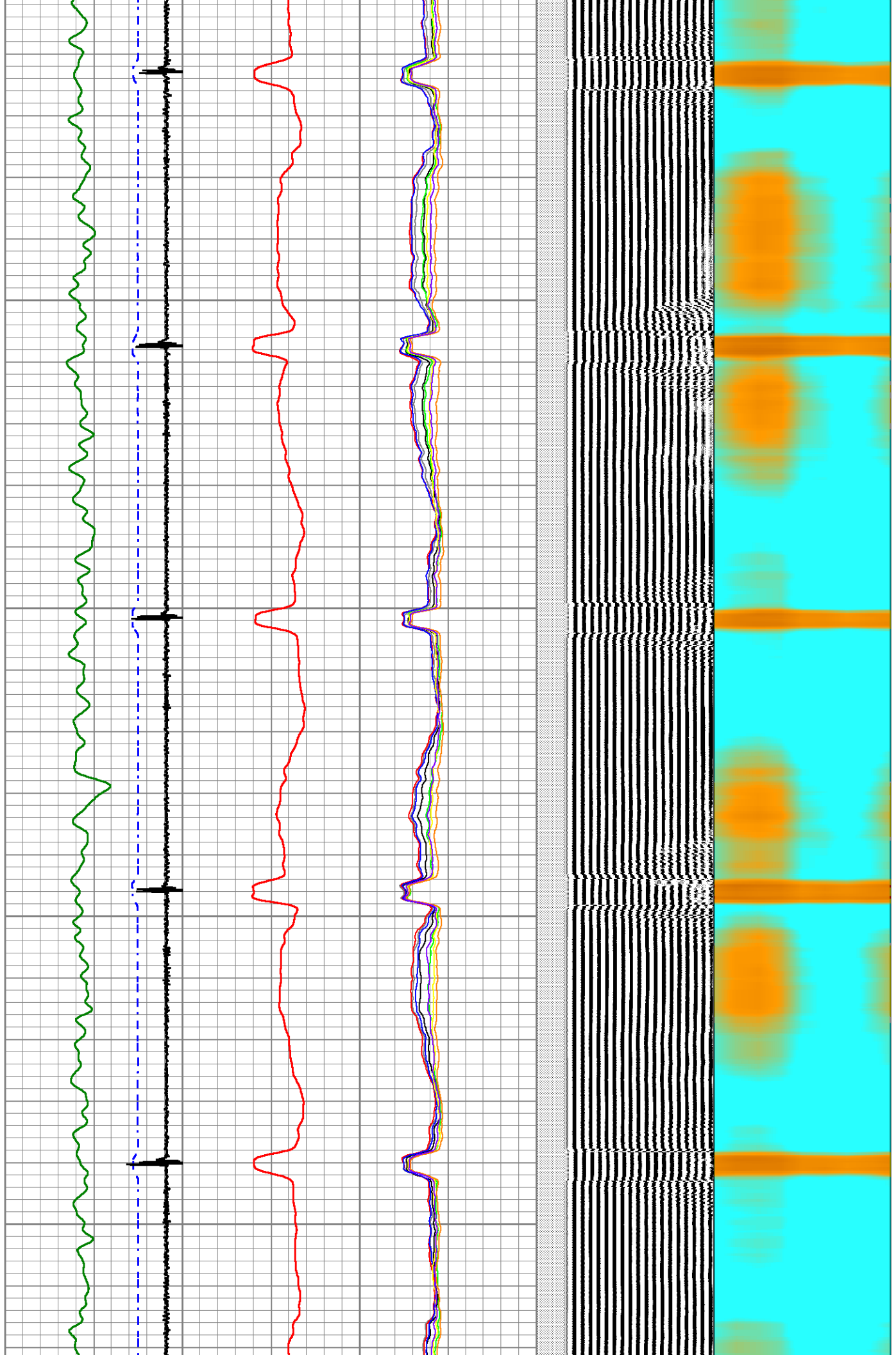


1300

1350

1400

1450

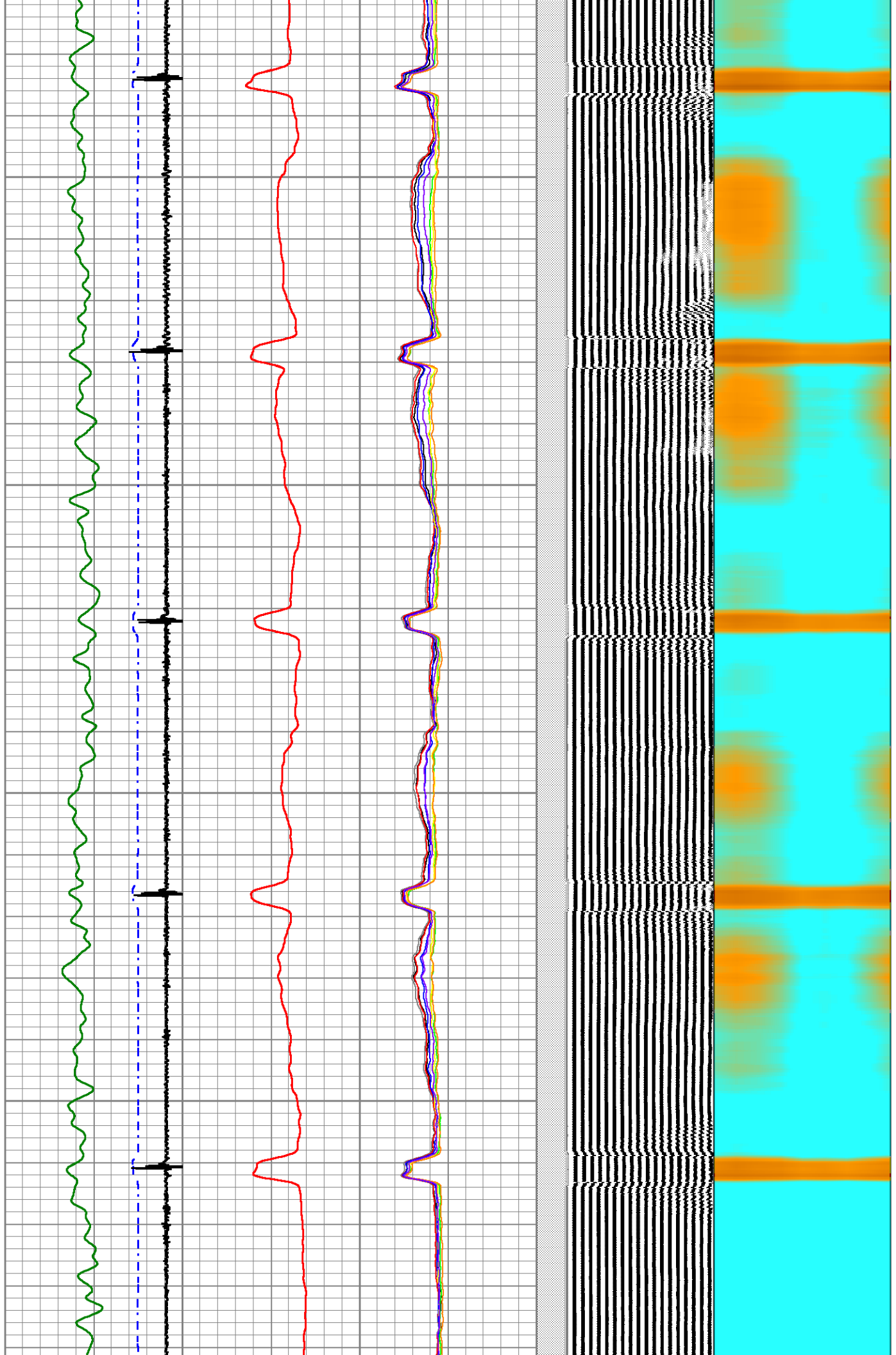


1500

1550

1600

1650



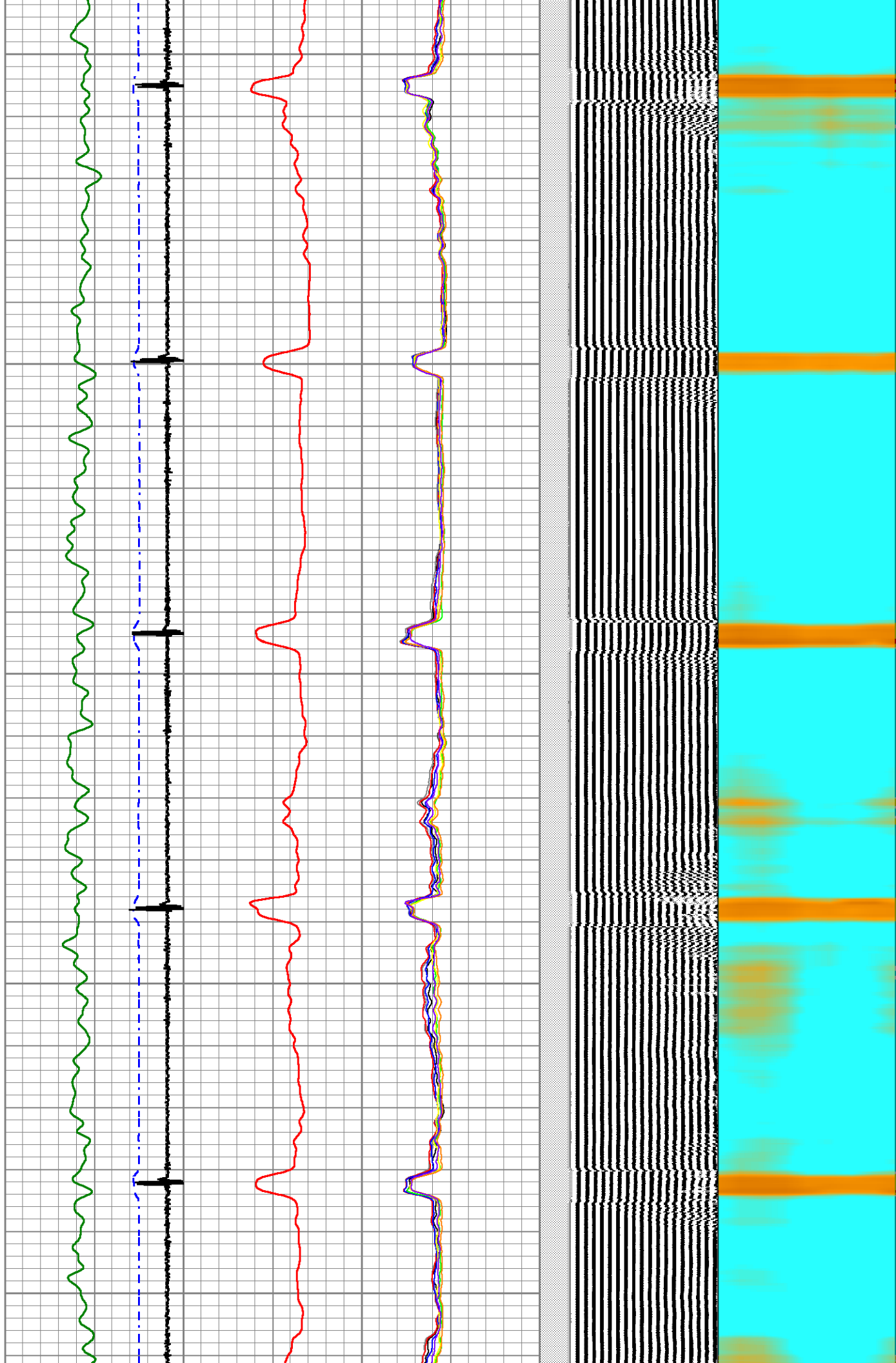
1700

1750

1800

1850

1900

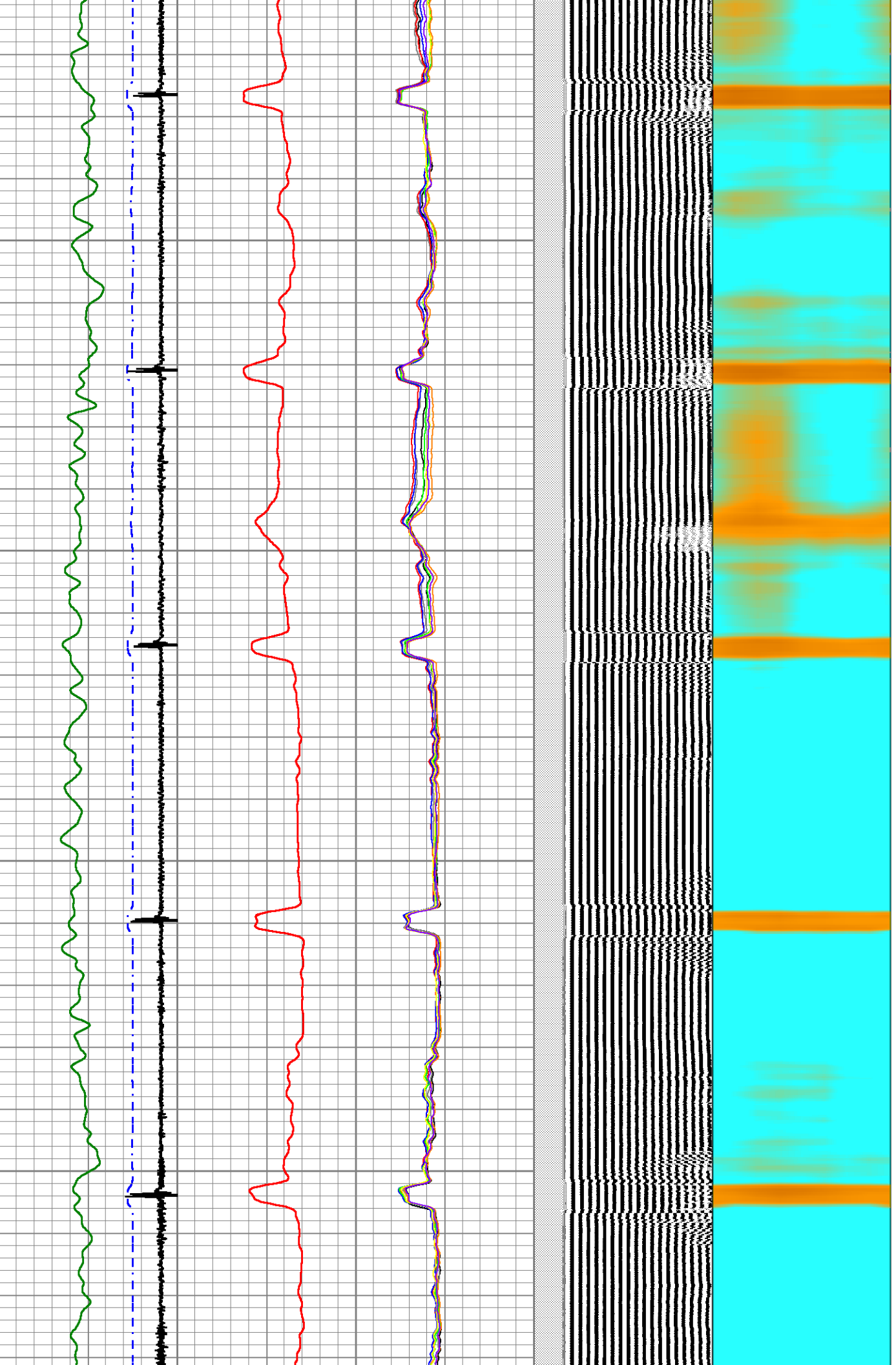


1950

2000

2050

2100



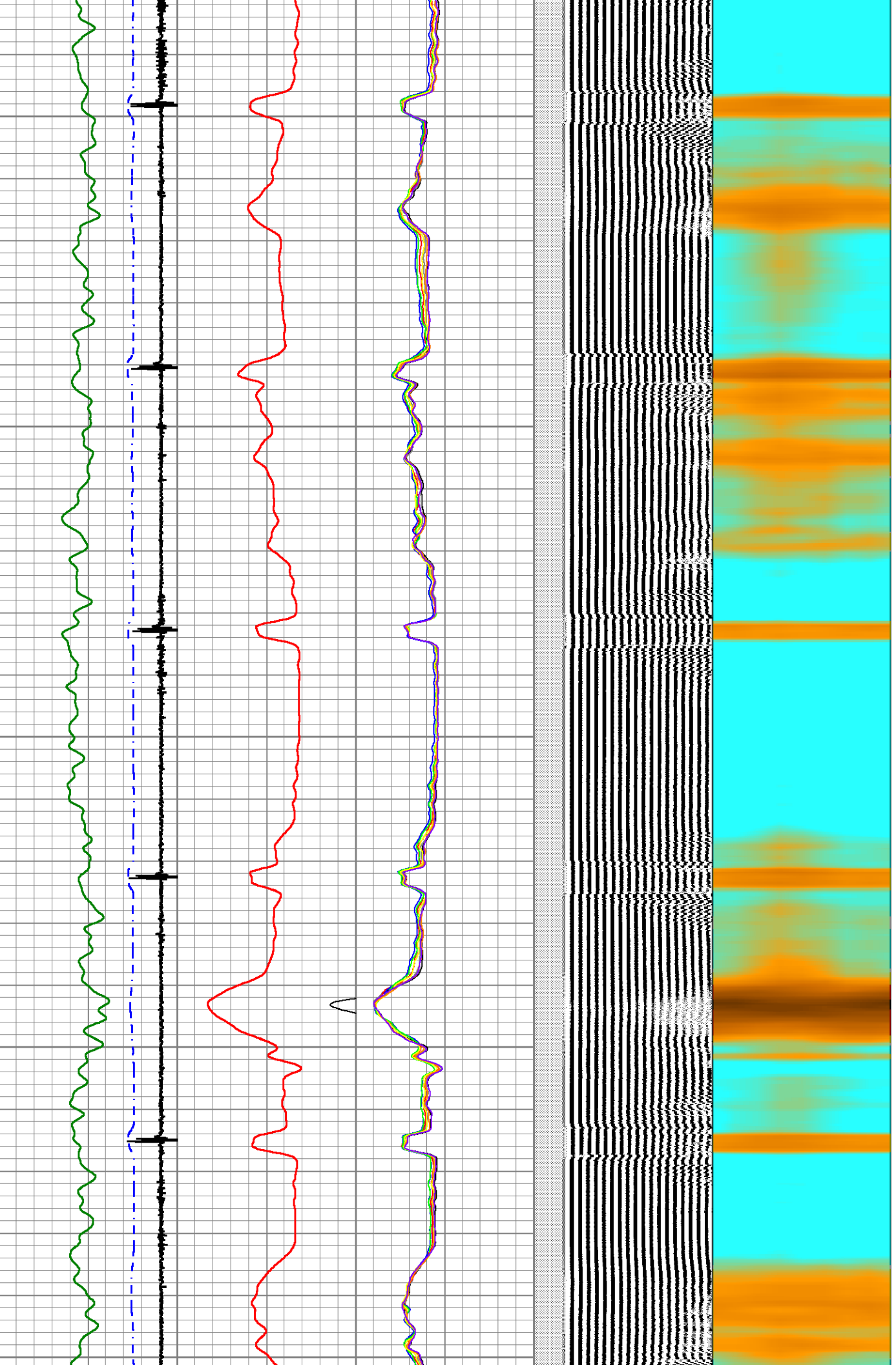
2150

2200

2250

2300

2350

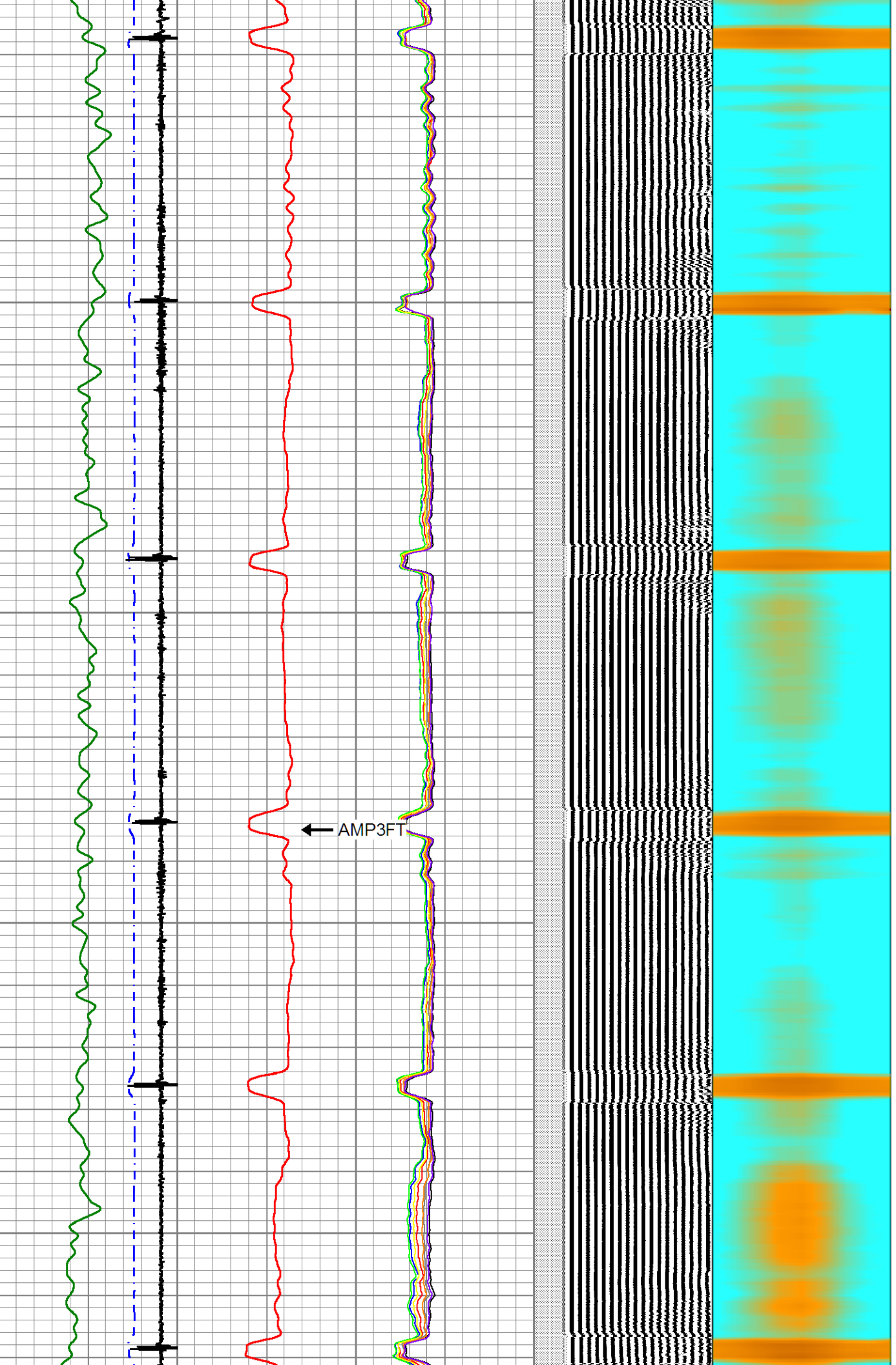


2400

2450

2500

2550

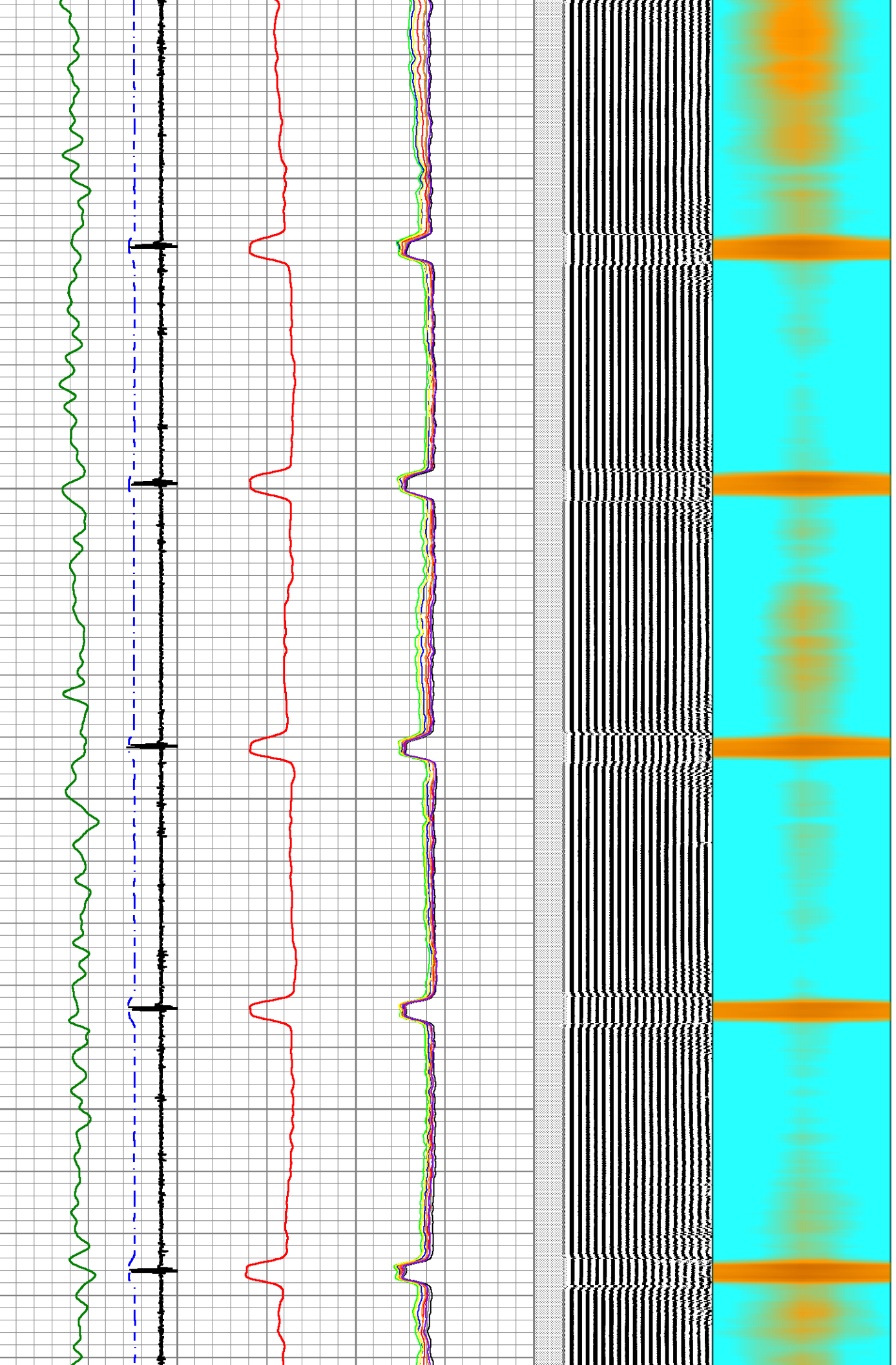


2600

2650

2700

2750



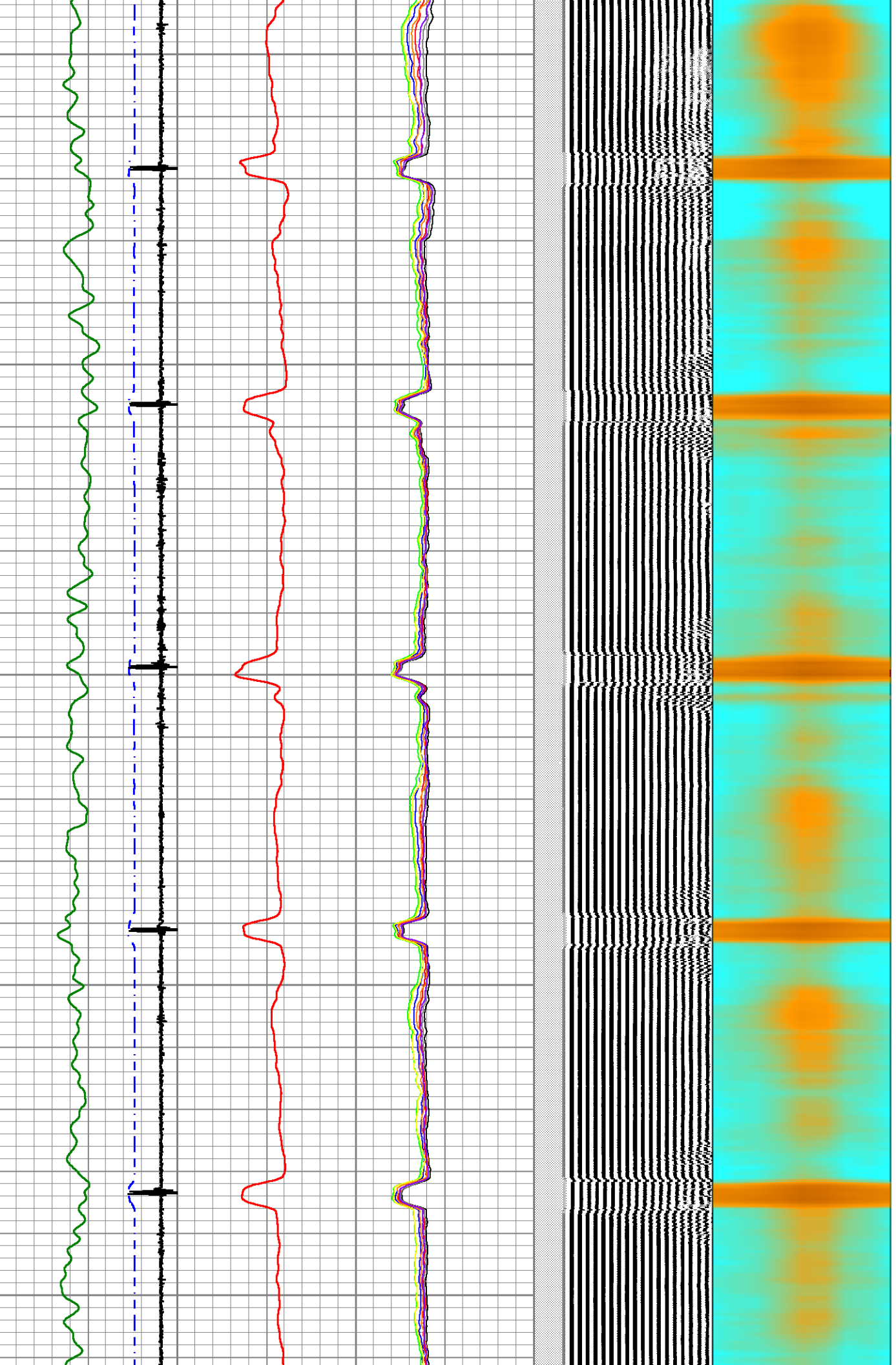
2800

2850

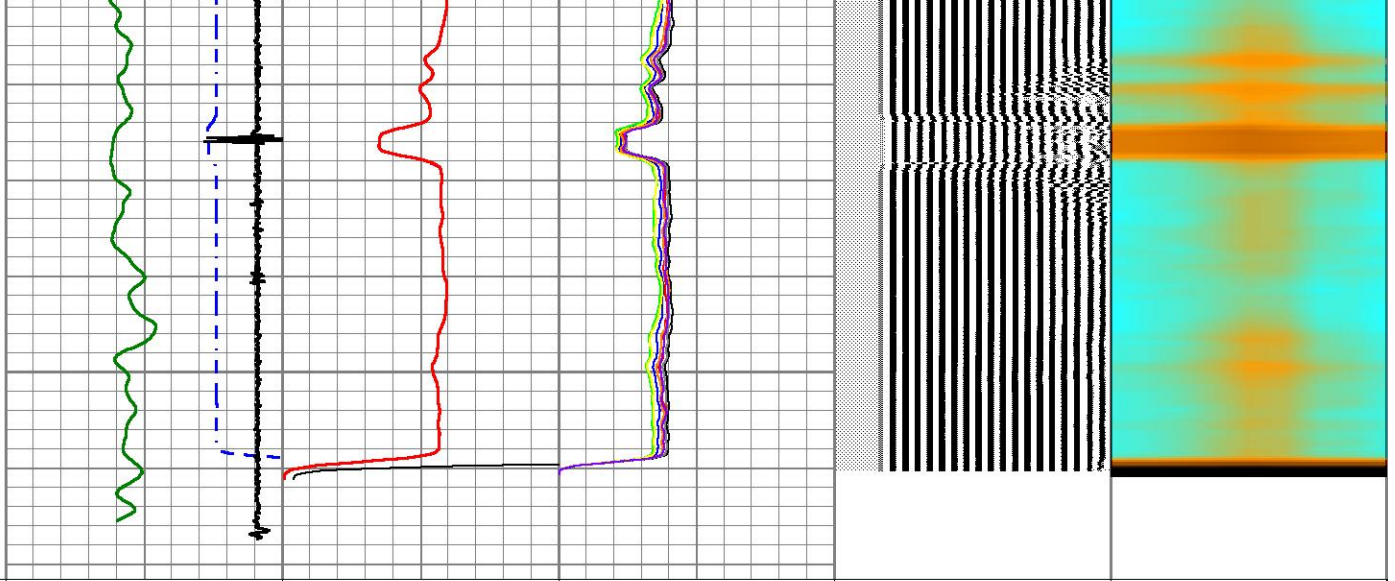
2900

2950

3000



3050



400	TT (usec)	200	0	AMP (mV)	100	0	AMPS1	150	200	VDL (usec)	1200	1	RADIAL MAP	8
10	CCL\$1	-1	0	AMPx5 (mV)	20	0	AMPS2	150						
0	GR (GAPI)	150				0	AMPS3	150						
						0	AMPS4	150						
						0	AMPS5	150						
						0	AMPS6	150						
						0	AMPS7	150						
						0	AMPS8	150						

Sensor	Offset (ft)	Schematic	Description	Length (ft)	O.D. (in)	Weight (lb)
ErrCt	19.69		CENT-BC275-0000 Probe 2.75" Bowspring Centralizer	2.83	2.75	24.00
WVFSYNC	12.27		RBT-Probe (FW1905-055) Probe Radii Bond Tool with Digital Telemetry	8.92	2.75	90.00
WVFS8	12.27					
WVFS7	12.27					
WVFS6	12.27					
WVFS5	12.27					
WVFS4	12.27					
WVFS3	12.27					
WVFS2	12.27					
WVFS1	12.27					

