

Construction and Stormwater Inspection

Date: 03/31/2023

Operator: VERDAD RESOURCES LLC - 10651

Location ID: 466345

Inspection Document #: 708200080

Weld County, CO

NWNW Section 35 T9N R60W

Dylan Edwardson
Reclamation Specialist, COGCC



COLORADO

**Oil & Gas Conservation
Commission**

Department of Natural Resources

Inspection Photos
Location Name: Boydston 3535
Location ID: 466345



Photo 1. Tracking pad requires maintenance.

Inspection Photos
Location Name: Boydston 3535
Location ID: 466345



Photo 2. Facing north near the entrance to the pad. Photo illustrates that the location has not been properly stabilized with evidence of wind erosion and dust blowing off location. Additionally, vehicle tracks were observed going through the interim areas and not staying on the access/lease road (red arrow).

Inspection Photos
Location Name: Boydston 3535
Location ID: 466345



Photo 3. Facing south near the location entrance; see comments in Photo 2.

Inspection Photos
Location Name: Boydston 3535
Location ID: 466345



Photo 4. Facing southwest near the location entrance. Materials/supplies were being stored within the recently seeded/reclaimed area. Additionally, this reclaimed area is not properly stabilized as most of the straw mulch has blown away and Staff observed dust originating and blowing off location from this area.

Inspection Photos
Location Name: Boydston 3535
Location ID: 466345



Photo 5. Facing west; see comments in Photo 4. Crane parked on reclaimed area.

Inspection Photos
Location Name: Boydston 3535
Location ID: 466345



Photo 6. Facing south from the northwest corner of pad. Photo illustrates material in stormwater ditch and unconsolidated material.

Inspection Photos
Location Name: Boydston 3535
Location ID: 466345



Photo 7. Close up from Photo 6.

Inspection Photos
Location Name: Boydston 3535
Location ID: 466345



Photo 8. Facing south; debris located in ditch.

Inspection Photos
Location Name: Boydston 3535
Location ID: 466345



Photo 9. Facing southeast from central/western ditch and berm; material placed/stored within stormwater ditch.

Inspection Photos
Location Name: Boydston 3535
Location ID: 466345



Photo 10. Facing east from stormwater ditch. Debris left on location.

Inspection Photos
Location Name: Boydston 3535
Location ID: 466345



Photo 11. Facing east from southwest corner of pad. Photo illustrates open/subsided trench that hasn't been backfilled or has any type of exclusion device (e.g. construction fence) to prevent injury to personnel or wildlife.

Inspection Photos
Location Name: Boydston 3535
Location ID: 466345



Photo 12. See comments in Photo 11.

Inspection Photos
Location Name: Boydston 3535
Location ID: 466345



Photo 13. See comments in Photo 11.

Inspection Photos
Location Name: Boydston 3535
Location ID: 466345



Photo 14. Facing south; material being stored in the stormwater ditch.

Inspection Photos
Location Name: Boydston 3535
Location ID: 466345



Photo 15. Facing southeast from the southern portion of the location. Photo illustrates that trash and debris have blown off location and will need to be picked up and disposed of. Examples (red arrows) do not illustrate all trash and debris; the Operator will need to identify all trash/debris off location and implement procedures and BMPs to prevent this from reoccurring.

Inspection Photos
Location Name: Boydston 3535
Location ID: 466345



Photo 16. Debris in ditch.

Inspection Photos
Location Name: Boydston 3535
Location ID: 466345



Photo 17. Facing east at southern portion of location. Photo illustrates that this portion of the ditch is comprised of unconsolidated material and will require maintenance to be a proper functioning BMP.

Inspection Photos
Location Name: Boydston 3535
Location ID: 466345



Photo 18. Debris in ditch.

Inspection Photos
Location Name: Boydston 3535
Location ID: 466345

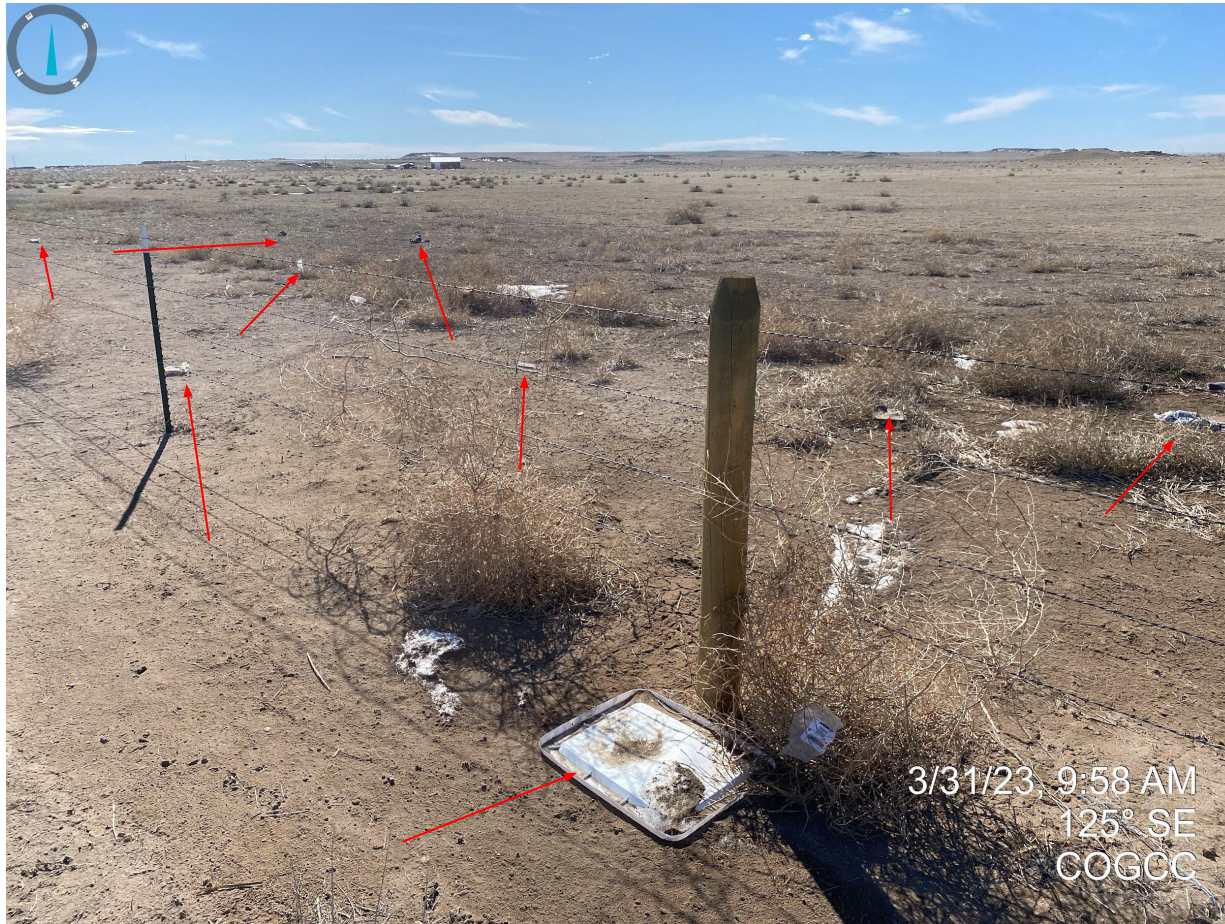


Photo 19. See comments in Photo 15.

Inspection Photos
Location Name: Boydston 3535
Location ID: 466345



Photo 20. See comments in Photo 15.

Inspection Photos
Location Name: Boydston 3535
Location ID: 466345



Photo 21. See comments in Photo 15.

Inspection Photos
Location Name: Boydston 3535
Location ID: 466345



Photo 22. See comments in Photo 15.

Inspection Photos
Location Name: Boydston 3535
Location ID: 466345



Photo 23. Facing southeast from the southeast corner of location; see comments in Photo 15.

Inspection Photos
Location Name: Boydston 3535
Location ID: 466345

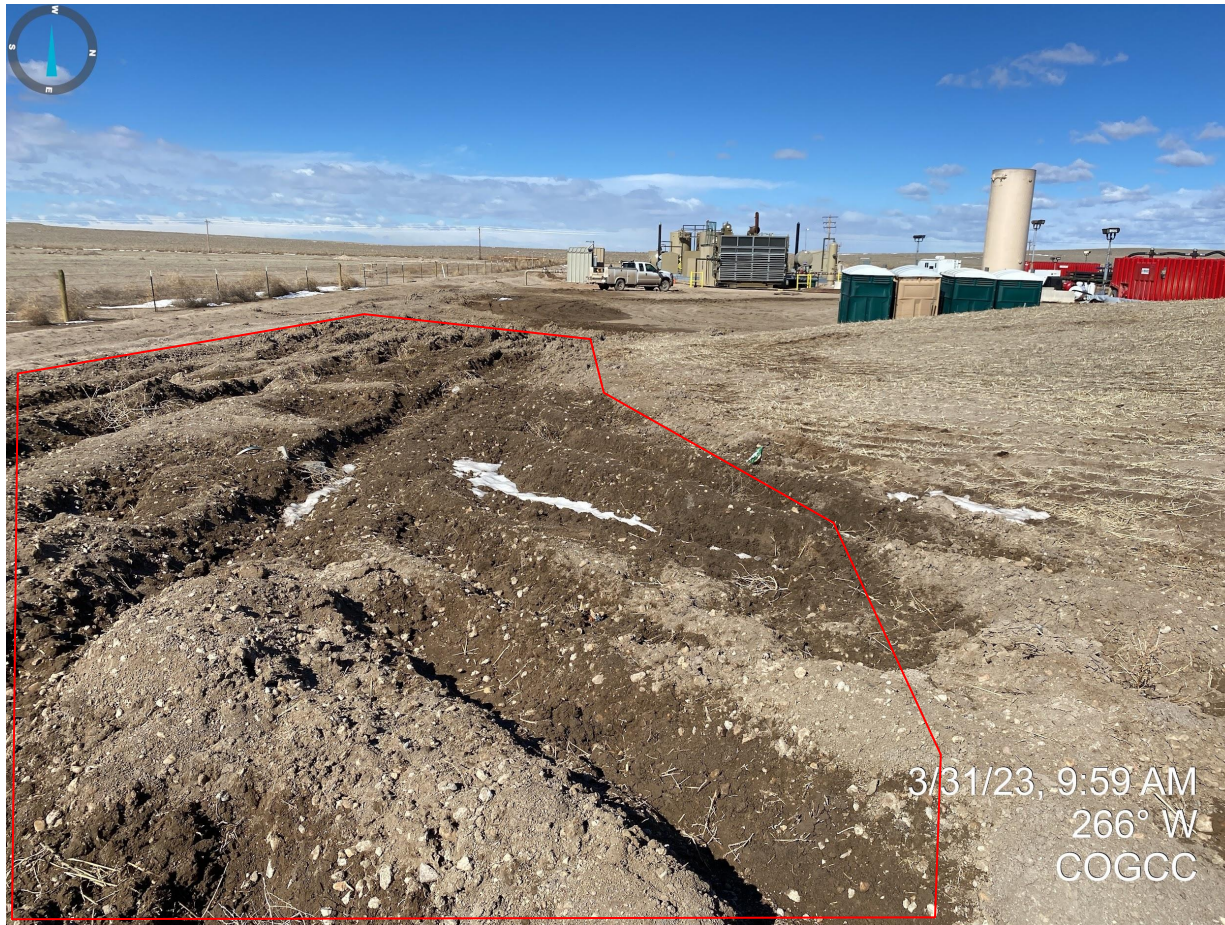


Photo 24. Facing west at the southern end of the topsoil stockpile. Photo illustrates unknown material (possibly fill material) being placed at the end of the topsoil. The operator needs to ensure that all soil horizons are properly segregated and stored to avoid mixing.



Photo 25. Facing northeast towards topsoil stockpile. It appears an area approximately 40' x 10' x 4' in size has been excavated from the topsoil stockpile. The Operator is being required to import topsoil to replace the deficit.

Inspection Photos
Location Name: Boydston 3535
Location ID: 466345



Photo 26. Facing north from the western portion of the topsoil stockpile. Photo illustrates equipment being stored on the stockpile, and the absence of stabilization BMPs on this portion of the stockpile.

Inspection Photos
Location Name: Boydston 3535
Location ID: 466345



Photo 27. Facing south; see comments in Photo 26.

Inspection Photos
Location Name: Boydston 3535
Location ID: 466345



Photo 28. Facing north at the northern end of stockpile. Photo illustrates unconsolidated topsoil that is susceptible to wind and water erosion as it is not properly stabilized.

Inspection Photos
Location Name: Boydston 3535
Location ID: 466345



Photo 29. Facing south at the northern end of the location. Unknown material (possibly fill) being stored in close proximity to topsoil stockpile. See comments in Photo 24.

Inspection Photos
Location Name: Boydston 3535
Location ID: 466345



Photo 30. Facing southwest; see comments in Photo 29.

Inspection Photos
Location Name: Boydston 3535
Location ID: 466345



Photo 31. Facing southeast at topsoil stockpile. Debris in stormwater ditch.

Inspection Photos
Location Name: Boydston 3535
Location ID: 466345



Photo 32. Facing west at northern portion of location. Berm BMPs does not appear to be an adequate BMP as the walls are nearly vertical, comprised of unconsolidated material (or lacking stabilization techniques), and have evidence of rill erosion (out of view). Additionally, rip rap check dams require maintenance as they are filled with sediment.

Inspection Photos
Location Name: Boydston 3535
Location ID: 466345



Photo 33. Facing southwest, see comments in Photo 32.

Inspection Photos
Location Name: Boydston 3535
Location ID: 466345



Photo 34. Facing southwest near sediment trap. Photo illustrates unconsolidated material placed next to stormwater ditch. The unconsolidated material can become a potential source of pollution itself as it is not properly stabilized.

Inspection Photos
Location Name: Boydston 3535
Location ID: 466345



Photo 35. Facing east, see comments in Photo 34.

Inspection Photos
Location Name: Boydston 3535
Location ID: 466345



Photo 36. See comments in Photo 34.

Inspection Photos
Location Name: Boydston 3535
Location ID: 466345



Photo 37. Unconsolidated material placed in front of rip rap portion spillway of sediment basin (red arrow).

Inspection Photos
Location Name: Boydston 3535
Location ID: 466345



Photo 38. Facing north towards rip rap spillway; see comments in Photo 37.

Inspection Photos
Location Name: Boydston 3535
Location ID: 466345



Photo 39. Facing north from the sediment trap area. Photo illustrates area that will need to be reclaimed after sediment laden stormwater discharged off location as documented in previous inspections (Doc #697504073 and 696105527)

Inspection Photos
Location Name: Boydston 3535
Location ID: 466345



Photo 40. Facing west near location entrance. Debris and unused equipment in stormwater ditch that will need to be removed.