



Radial Cement Bond  
Gamma Ray  
Casing Collar Log

Company Civitas  
Well ANTELOPE 33-31  
Field Wattenberg  
County Weld  
State Colorado

Company Civitas  
Well ANTELOPE 33-31  
Field Wattenberg  
County Weld State Colorado

Location: API #: 05-123-32885  
Other Services: NONE  
Permanent Datum: SEC 31 TWP 5N RGE 62W  
Elevation: 4556'  
Log Measured From: Elevation 4556'  
Drilling Measured From: K.B. 4566'  
D.F. ---  
G.L. 4556'

Date	6-FEB-2023						
Run Number	One						
Depth Driller	6700 FT						
Depth Logger	2800 FT						
Bottom Logged Interval	2795 FT						
Top Log Interval	Surface						
Open Hole Size	7.875"						
Type Fluid	Water						
Density / Viscosity	---						
Max. Recorded Temp.	115 °F						
Estimated Cement Top	See Log						
Time Well Ready	ROA						
Time Logger on Bottom	12:40						
Equipment Number	2-001						
Location	Platteville						
Recorded By	W.Wacker						
Witnessed By	Pete Burns						
Borehole Record			Tubing Record				
Run Number	Bit	From	To	Size	Weight	From	To
Casing Record	Size (in)	Wgt (lbs/Ft)	Grade	Top	Bottom		
Surface Casing	8-5/8"	24	---	Surface	434 FT		
Intermediate #1	4-1/2"	11.6	---	Surface	6643 FT		
Intermediate #2							
Liner							

<<< Fold Here >>>

All interpretations are opinions based on inferences from electrical or other measurements and we cannot and do not guarantee the accuracy or correctness of any interpretation, and we shall not, except in the case of gross or willful negligence on our part, be liable or responsible for any loss, costs, damages, or expenses incurred or sustained by anyone resulting from any interpretation made by any of our officers, agents or employees. These interpretations are also subject to our general terms and conditions set out in our current Price Schedule.

Comments

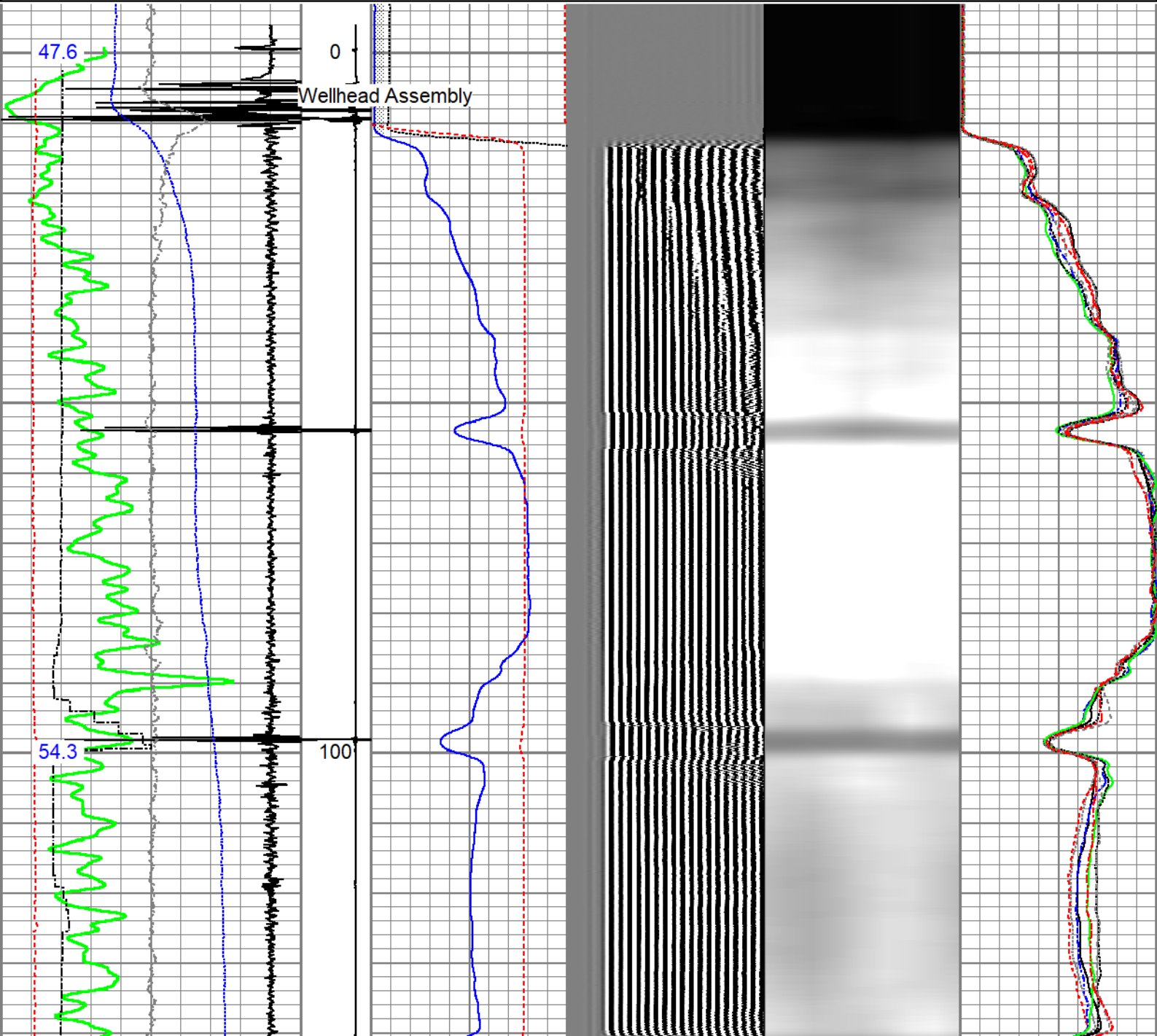
Log ran as per customer request  
Well information from JW log ran 18-JULY-2011  
Depth referenced to Kelly Bushing at 10 FT  
Log ran with 0 PSI Surface Induced Pressure  
Logging tools were clean and free of any debris upon completion of operations

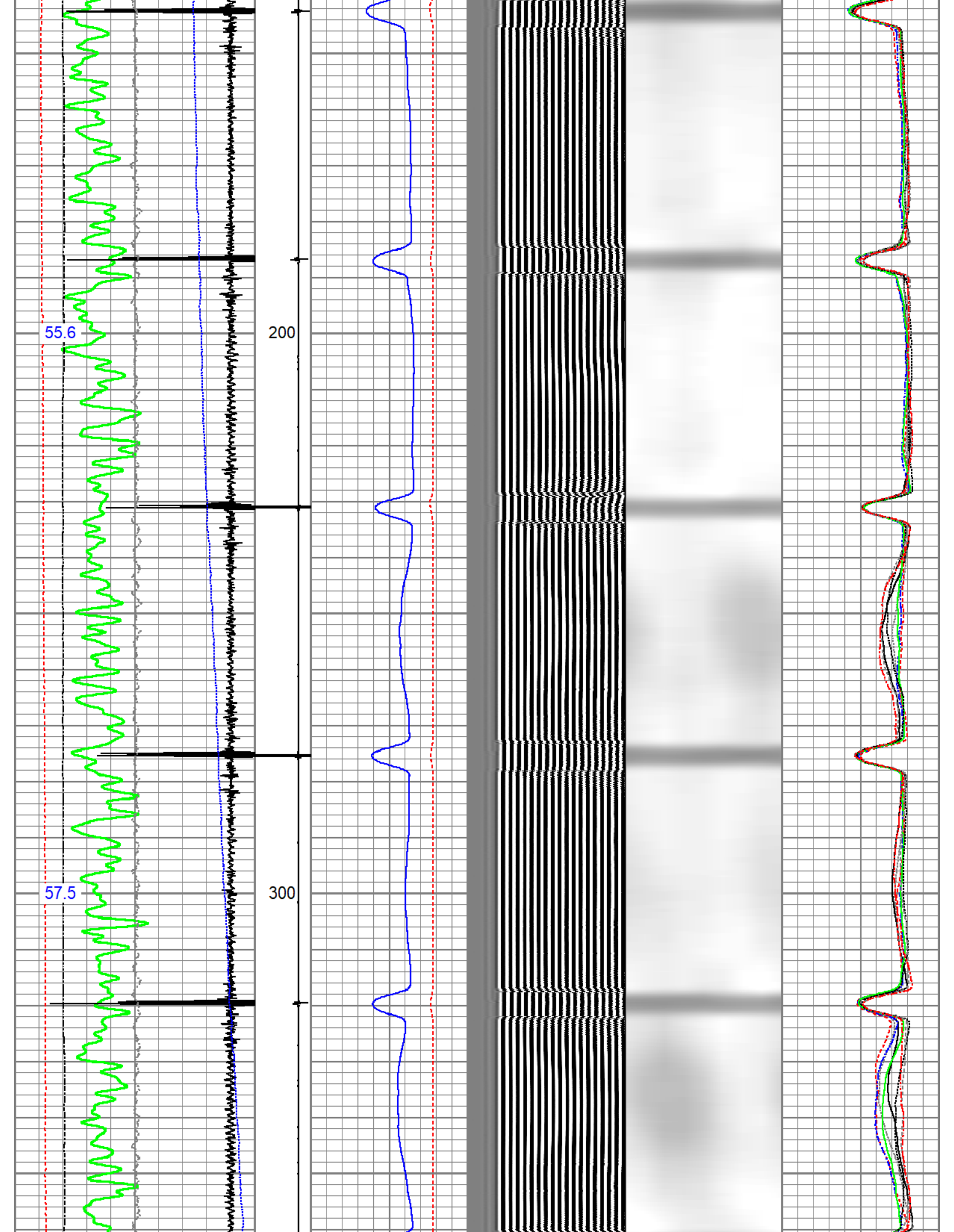
Main Pass

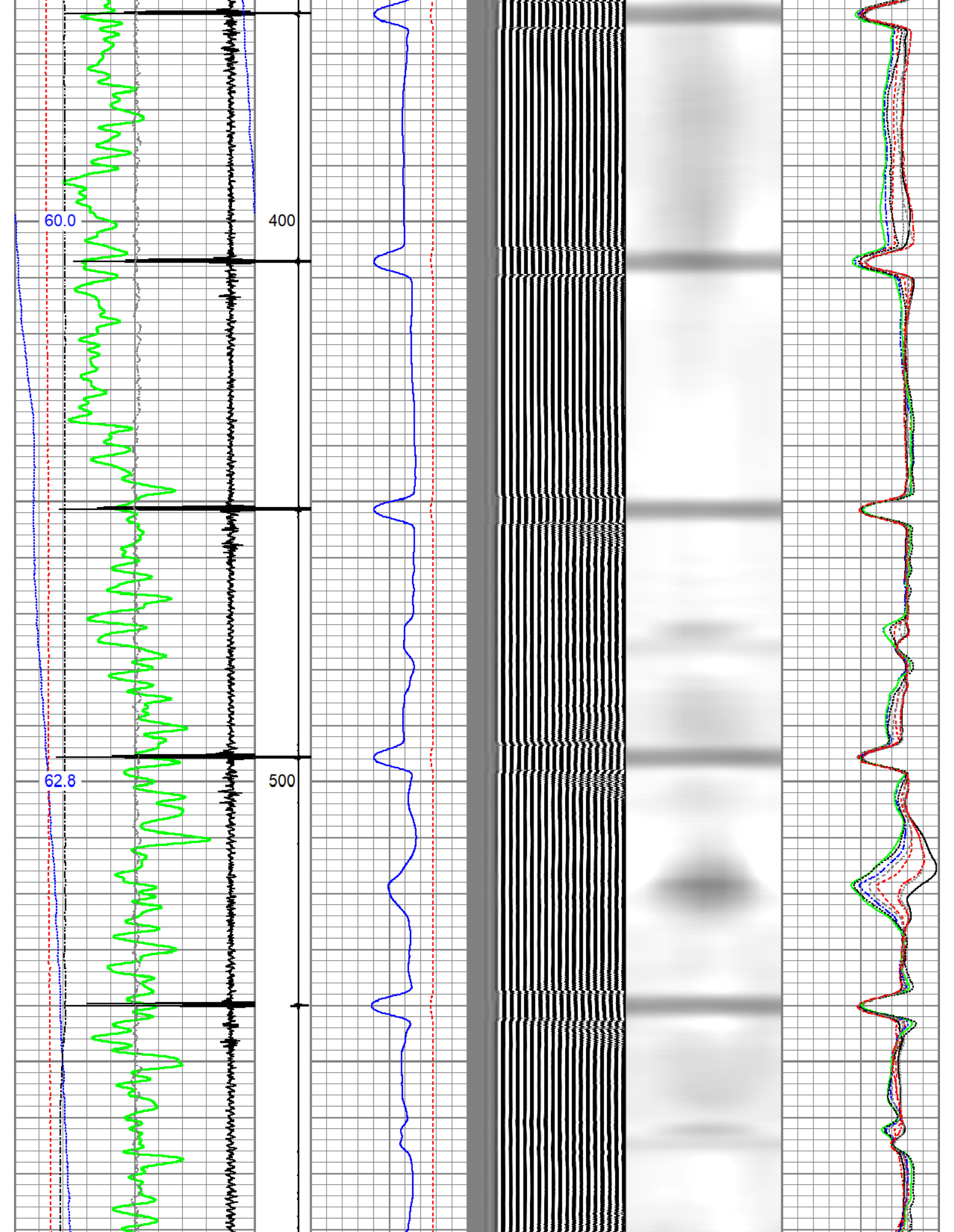


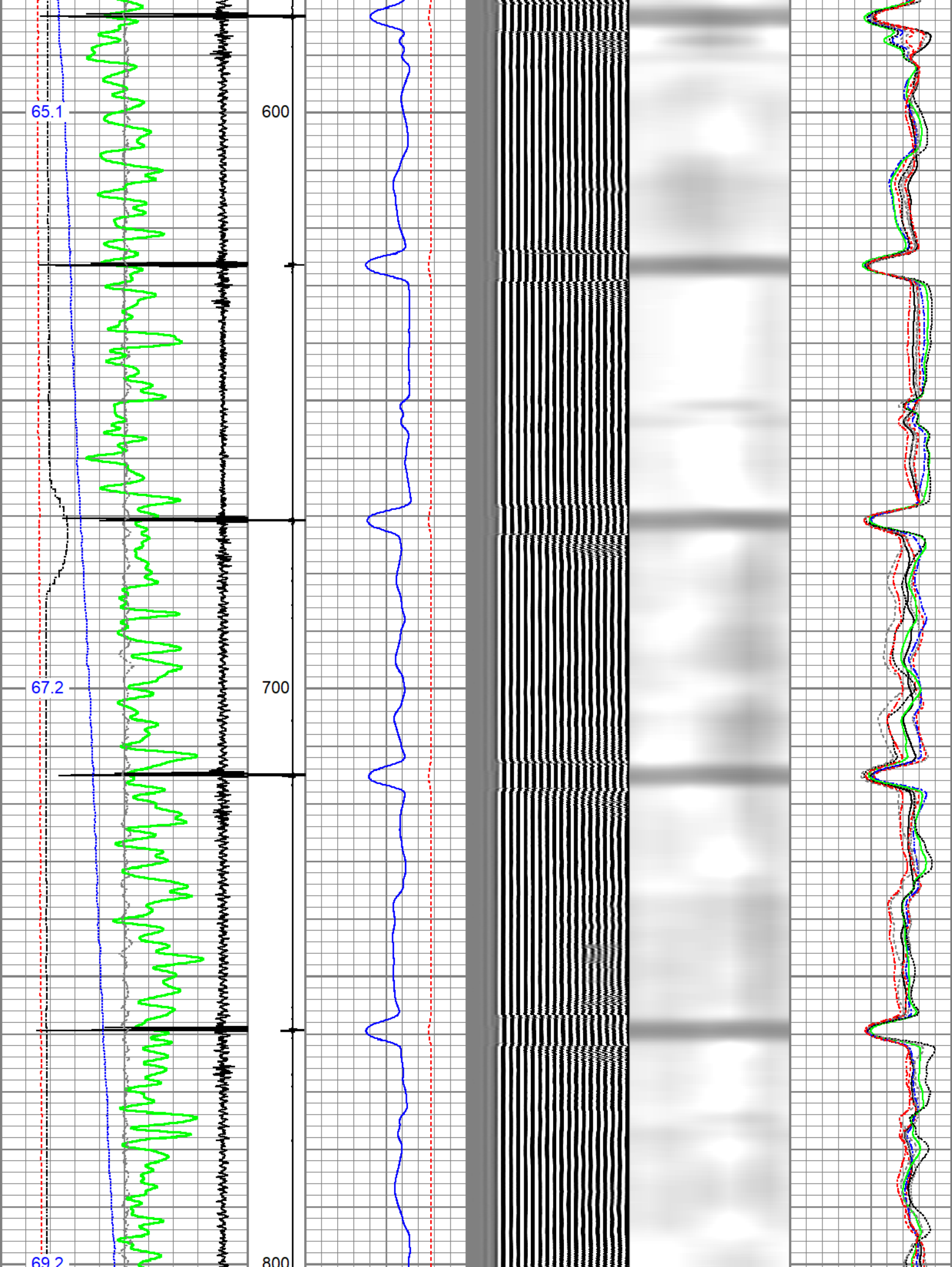
Database File antelope 33-31\_cbl.db  
 Dataset Pathname CBL/main  
 Presentation Format edge\_rbl\_noble  
 Dataset Creation Mon Feb 06 13:11:14 2023  
 Charted by Depth in Feet scaled 1:240

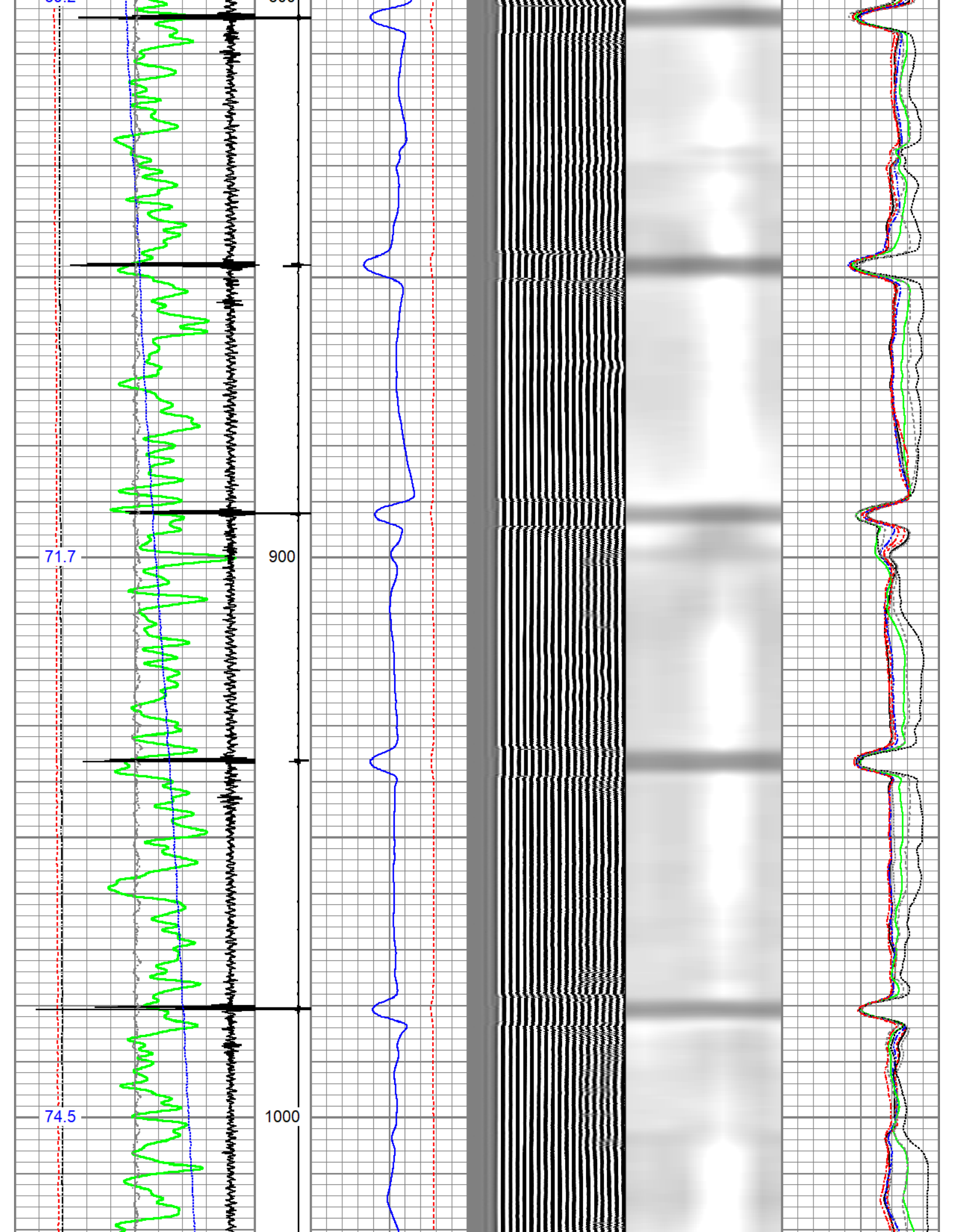
0	Gamma Ray (GAPI)	120	CCL\$2	3' Amplitude	5' Variable Density	Sector Map	0	AMP S1	100
9	Casing Collar Locator	-1	9 -1 0	(mV) 100	200 (usec) 1200		0	AMP S2	100
0	Temperature (degF)	20		3' Amplitude x 5			0	AMP S3	100
-150	Line Speed (ft/min)	150		(mV) 20			0	AMP S4	100
0	Line Tension (lb)	2000		3' Travel Time			0	AMP S5	100
	Differential Temperature			650 (usec) 150			0	AMP S6	100
-2	(degF)	2					0	AMP S7	100
	Temperature						0	AMP S8	100
	(degF)								

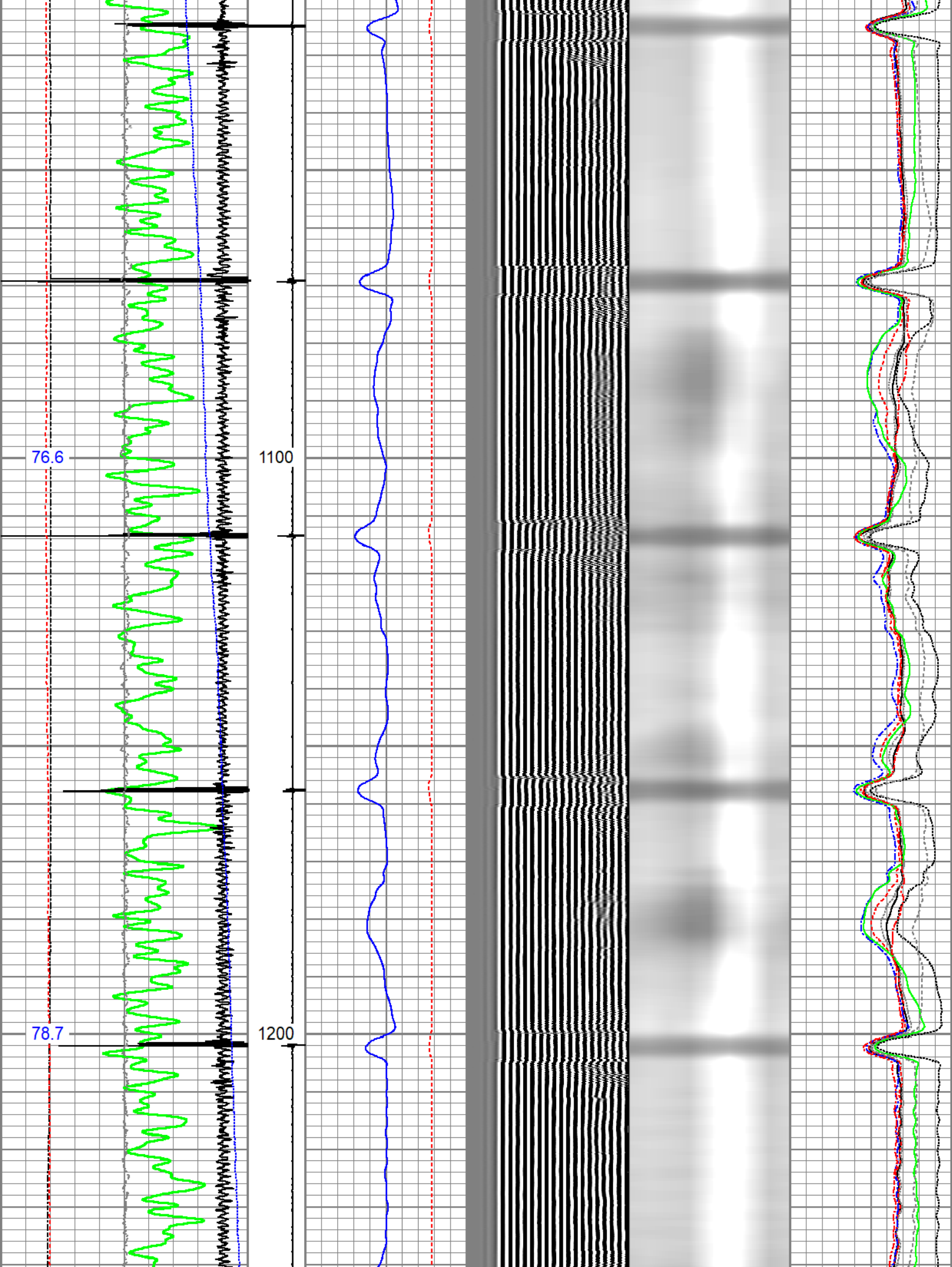


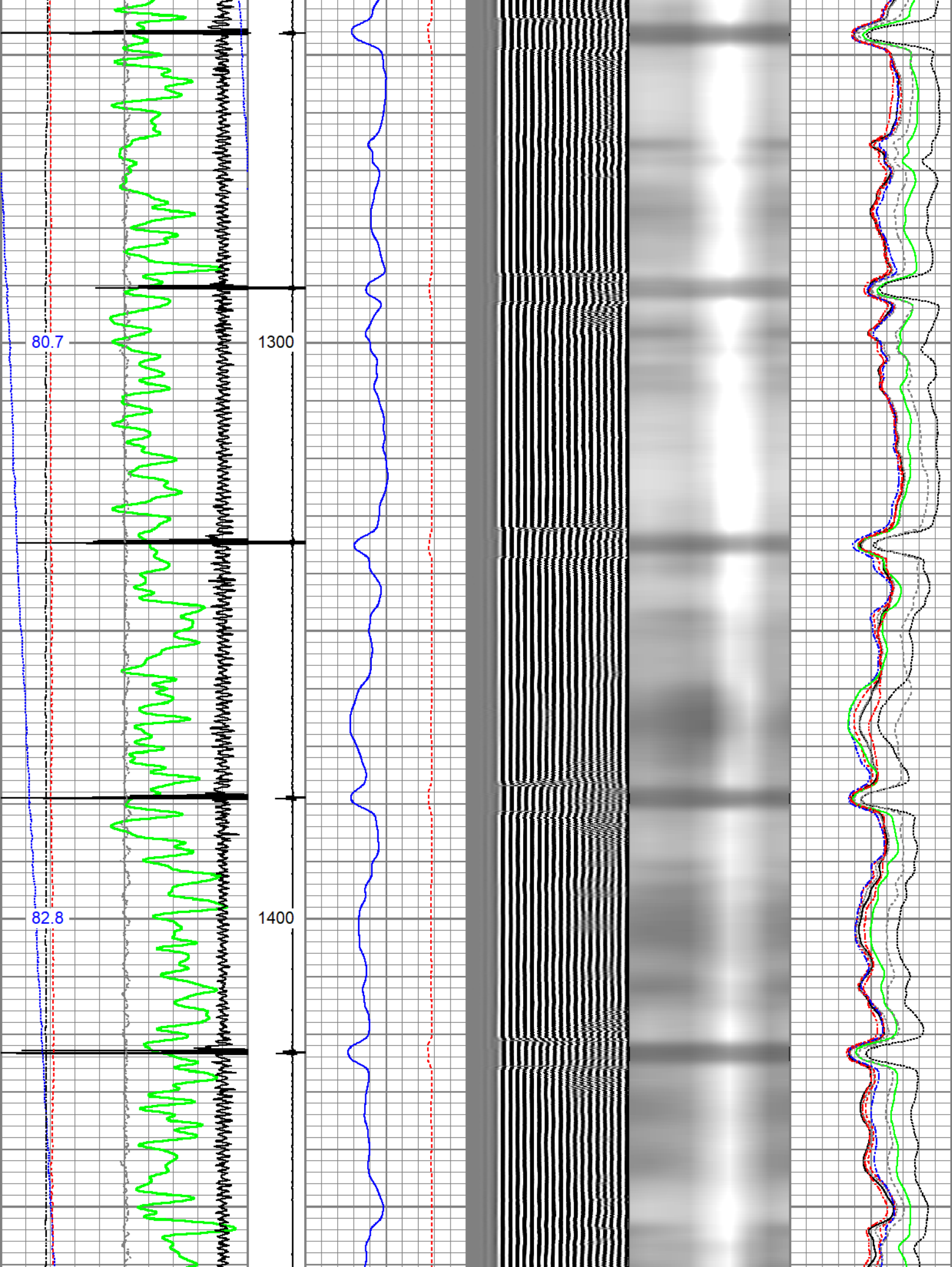




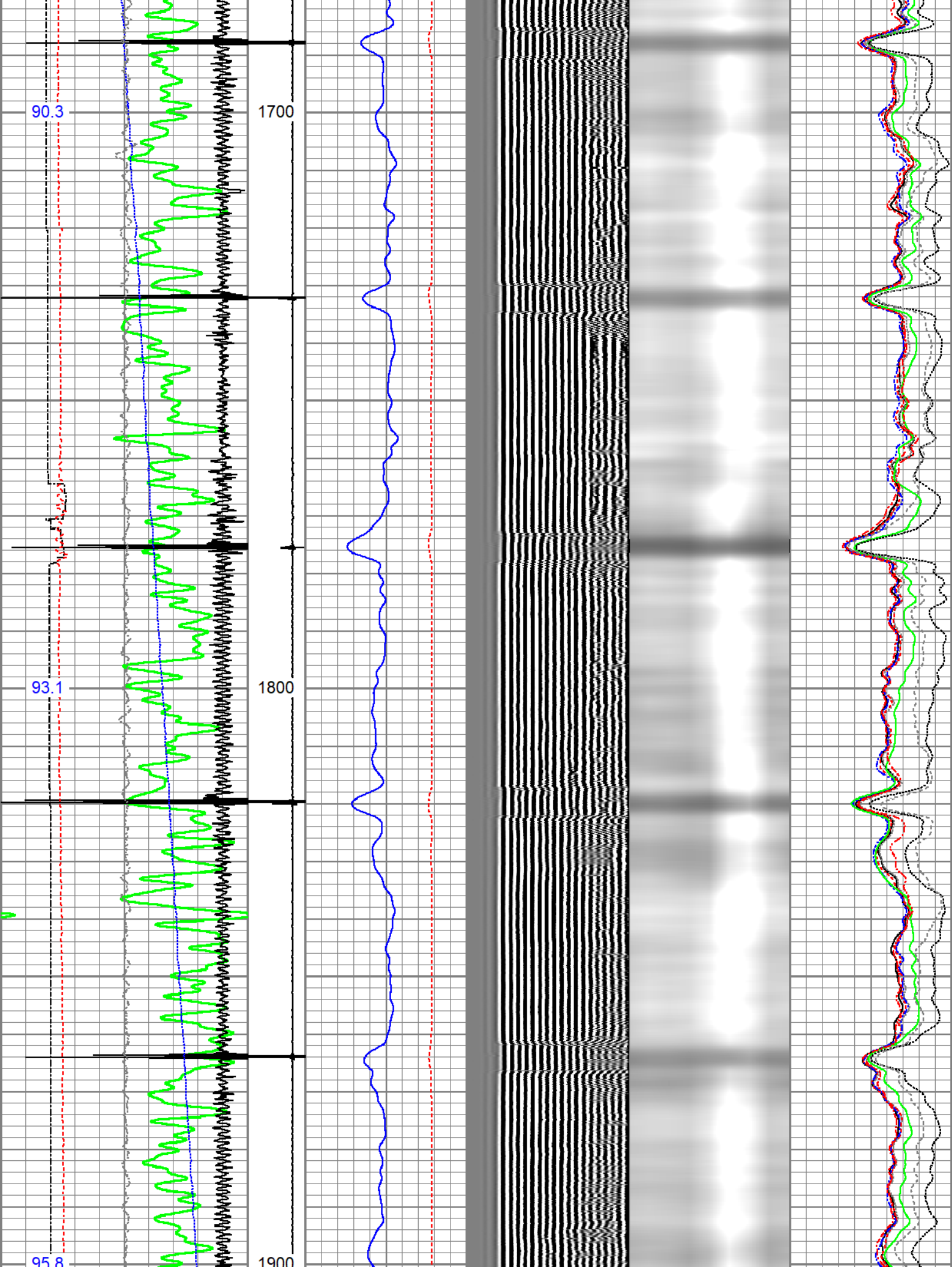


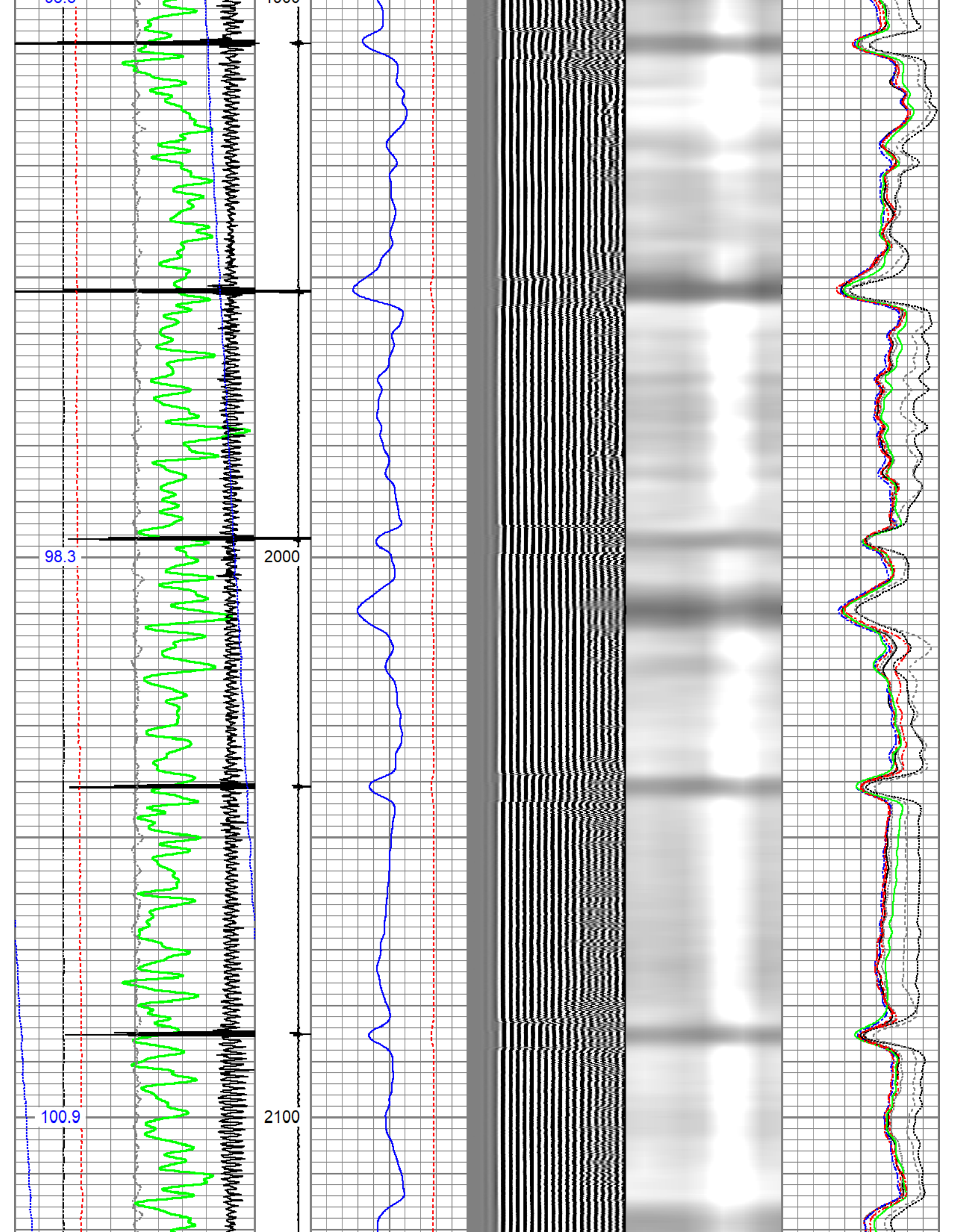


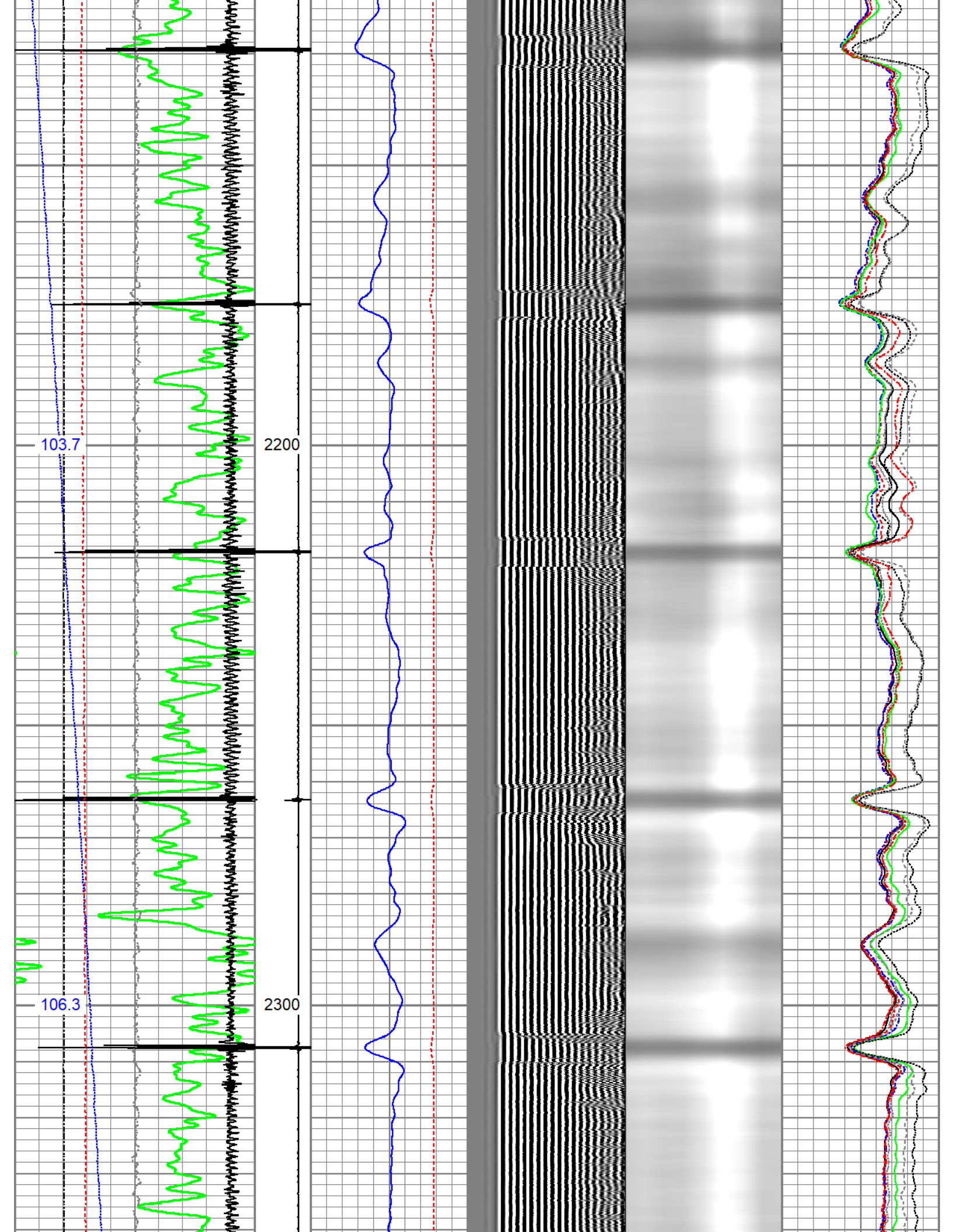


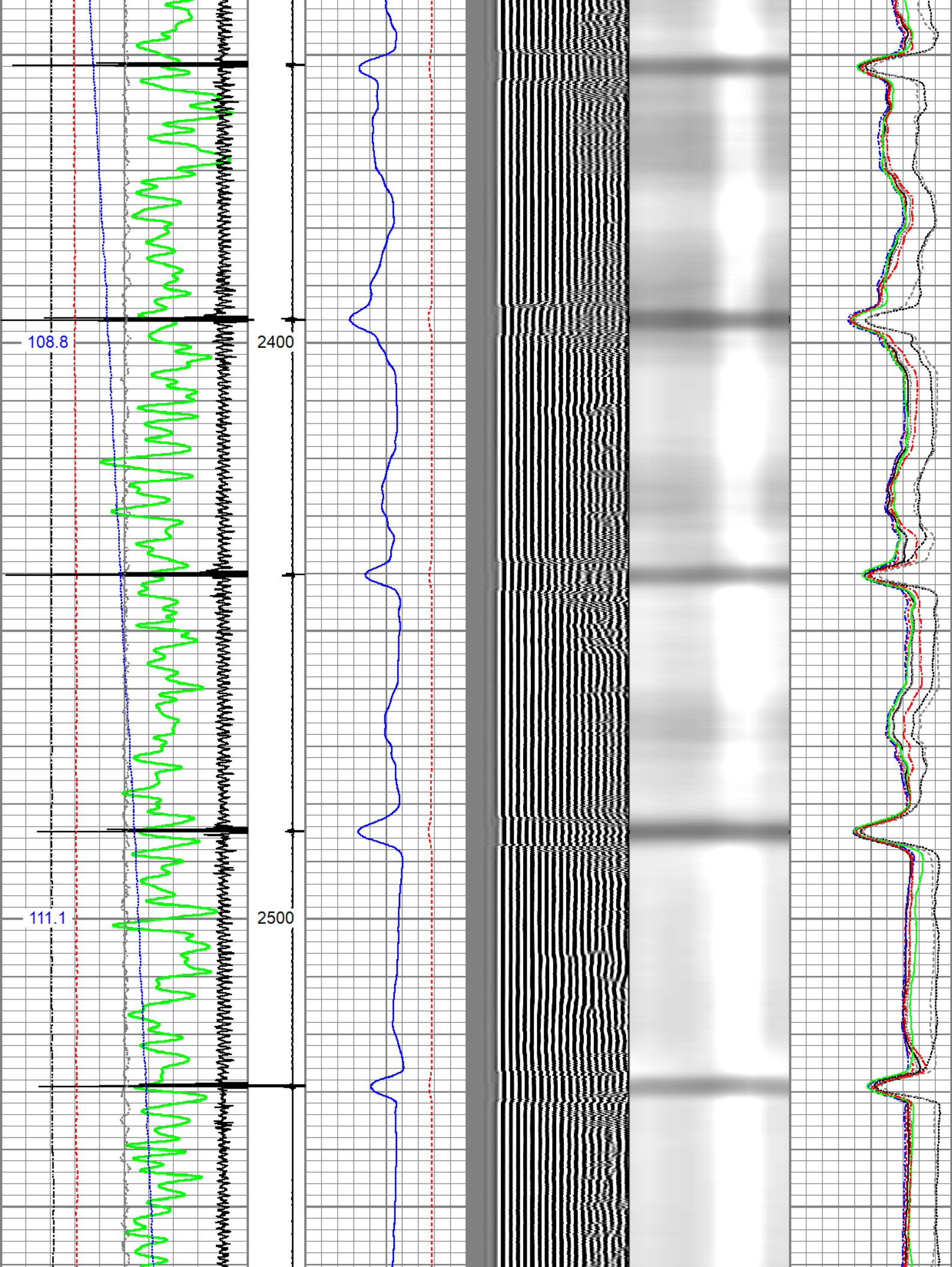


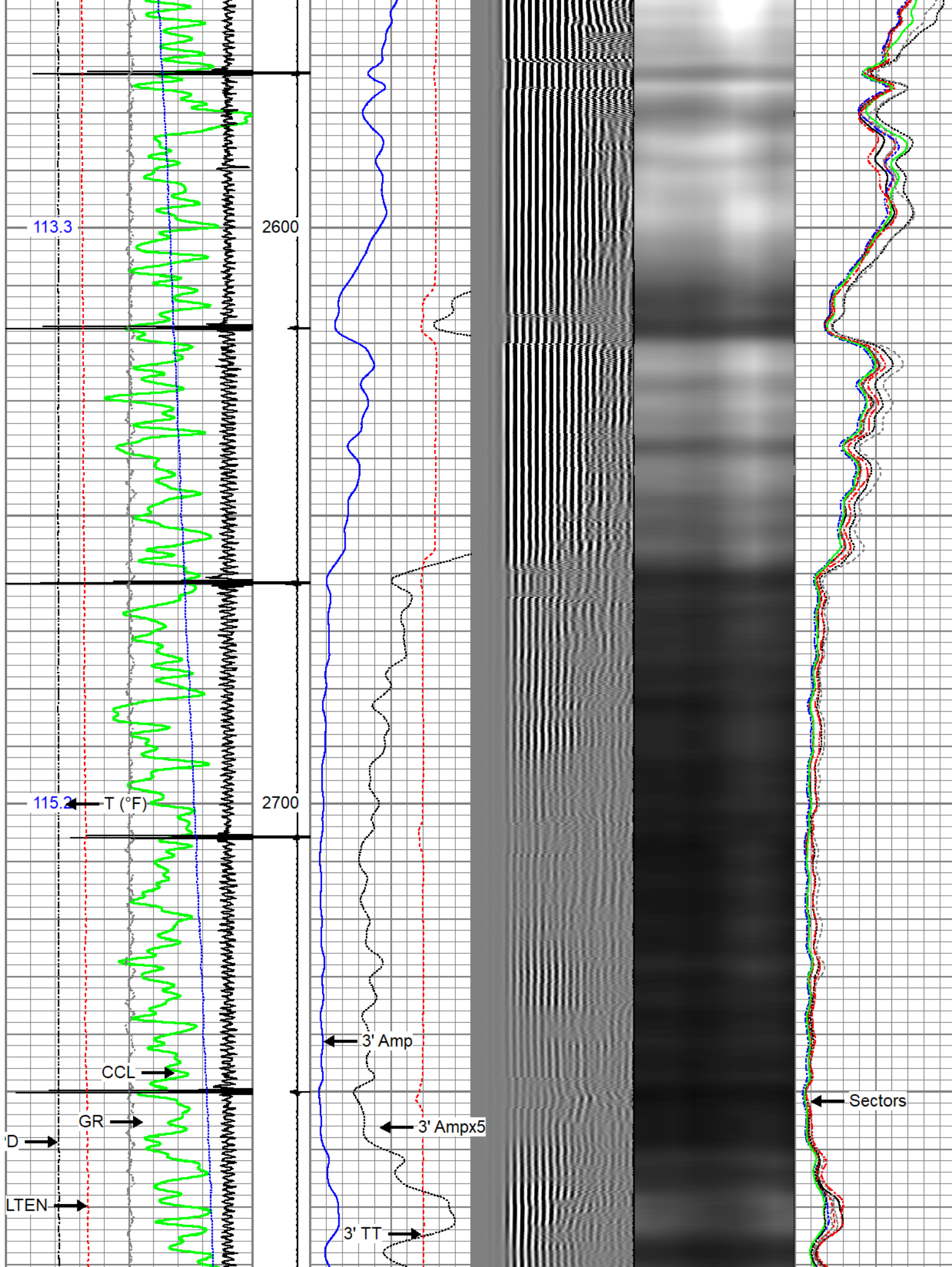


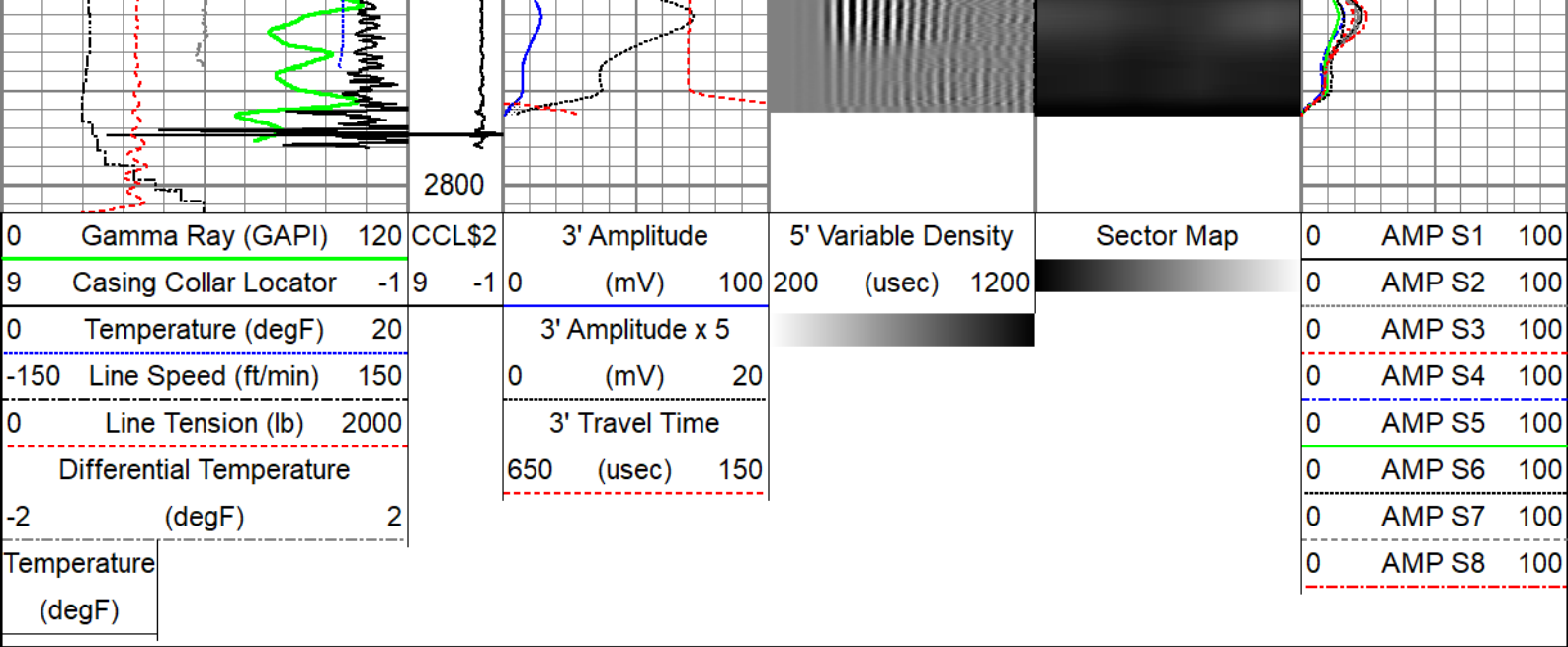










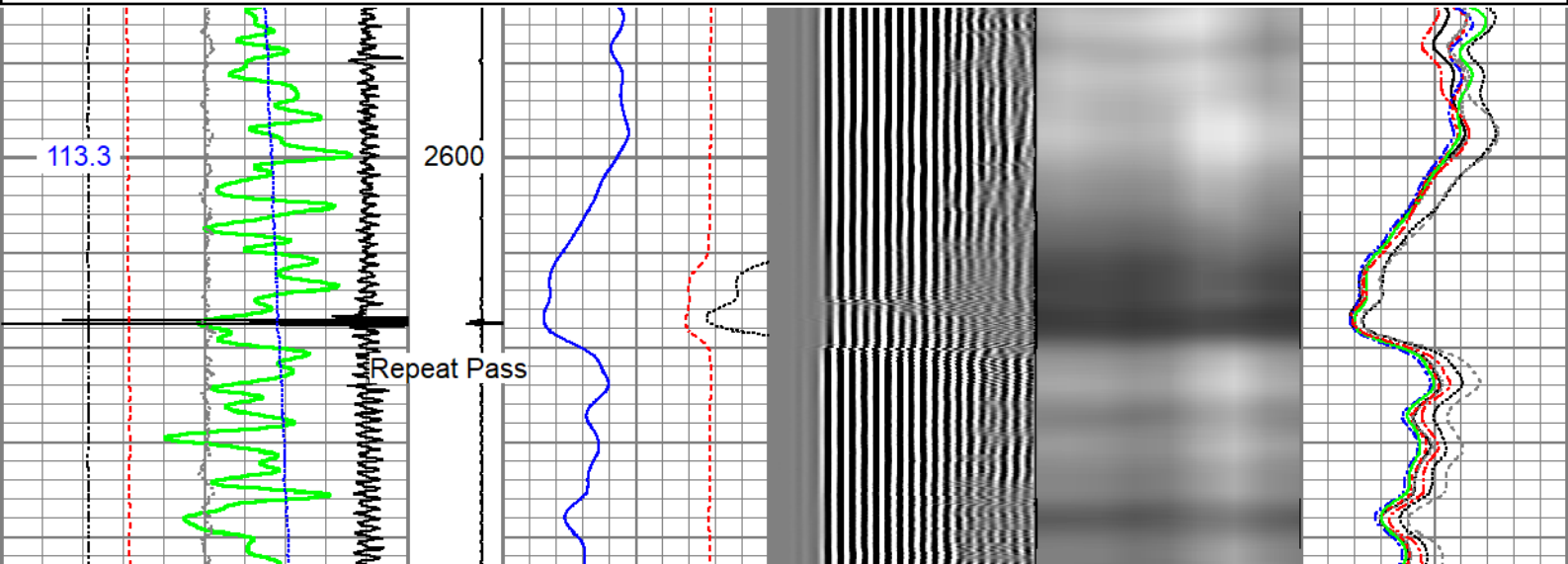
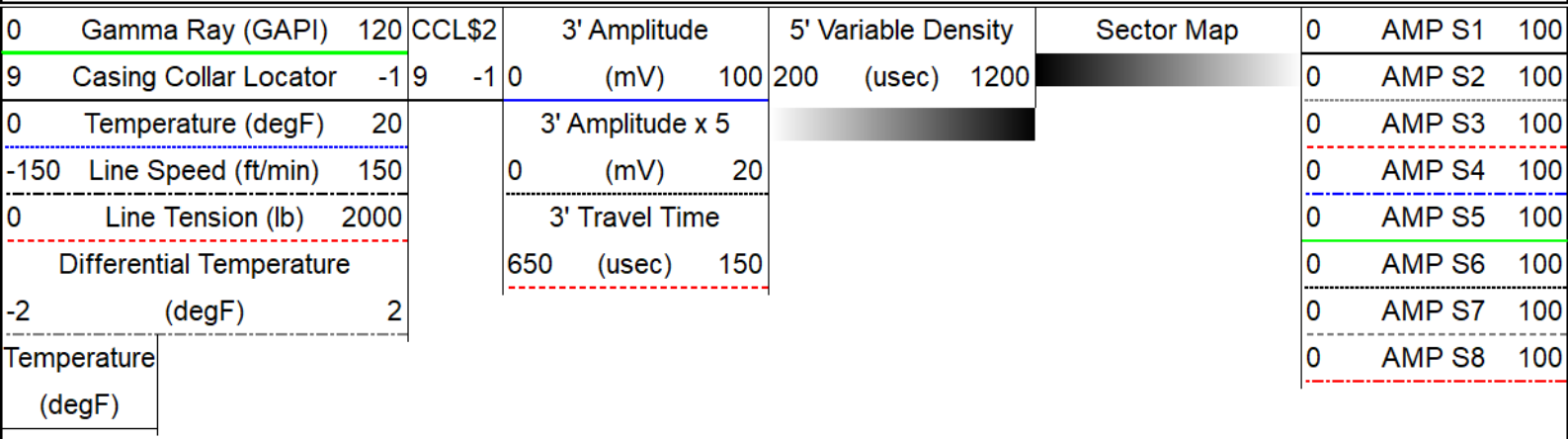


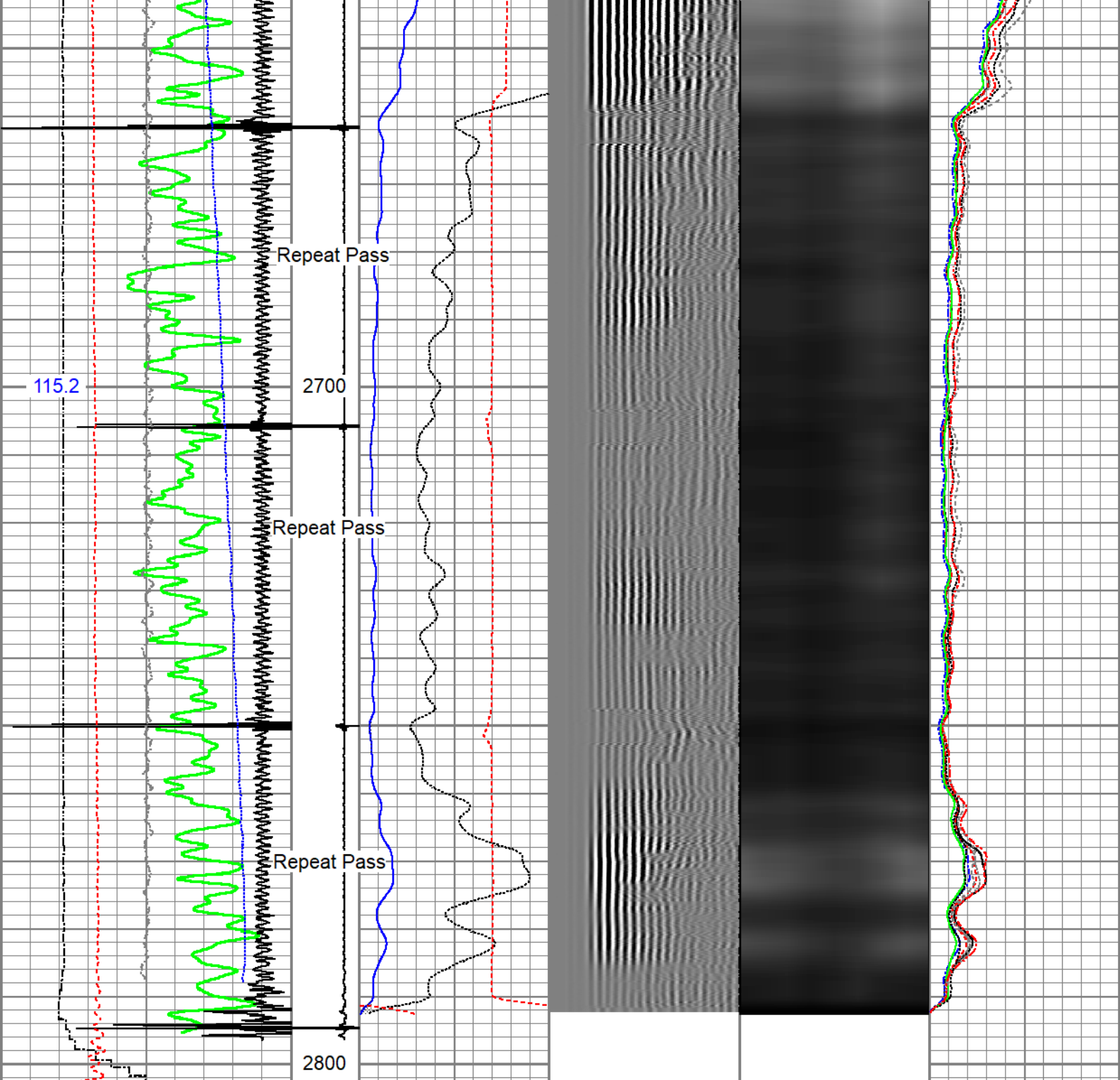
# Greenfield

## Repeat Pass

Recprded with no surface induced pressure

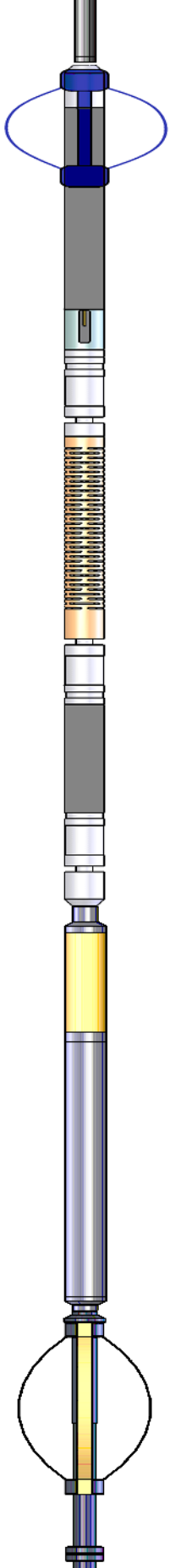
Database File      antelope 33-31\_cbl.db  
 Dataset Pathname    CBL/repeat  
 Presentation Format   edge\_rbl\_noble  
 Dataset Creation    Mon Feb 06 13:16:27 2023  
 Charted by          Depth in Feet scaled 1:240





0	Gamma Ray (GAPI)	120	CCL\$2	3' Amplitude	5' Variable Density	Sector Map	0	AMP S1	100
9	Casing Collar Locator	-1	9 -1	(mV) 100	200 (usec) 1200		0	AMP S2	100
0	Temperature (degF)	20		3' Amplitude x 5			0	AMP S3	100
-150	Line Speed (ft/min)	150		(mV) 20			0	AMP S4	100
0	Line Tension (lb)	2000		3' Travel Time			0	AMP S5	100
	Differential Temperature			650 (usec) 150			0	AMP S6	100
-2	(degF)	2					0	AMP S7	100
	Temperature (degF)						0	AMP S8	100

Sensor	Offset (ft)	Schematic	Description	Length (ft)	O.D. (in)	Weight (lb)

				Titan CHD-14375 GO Titan 1-7/16" Assembled Electric Cable Head with 1" Fishing Neck	1.03	1.44	3.60
				SO BS CENT-2750-4500 Slip Over 2-3/4" I.D. for 4-1/2" O.D. Casing Bow Spring Centralizer	1.33	3.25	10.00
TEMP	13.87						
WVFS8	11.64			Probe Radii-2750 RBT (FW1305-096) Probe 2-3/4" Radial Cement Bond Tool with Integral Temperature Sub	9.39	2.75	105.00
WVFS7	11.64						
WVFS6	11.64						
WVFS5	11.64						
WVFS4	11.64						
WVFS3	11.64						
WVFS2	11.64						
WVFS1	11.64						
WVFCAL	11.64						
WVF3FT	11.64						
WVF5FT	10.64						
CCL\$2	6.51						
CCL\$1	6.51						
GR	5.26			Probe GR-CCL-2750 GOB (FW1212-026) Probe 2-3/4" rev.2 Digital Scintillation Gamma Ray/CCL Combined with GO Bottom	4.51	2.75	55.00
				Probe CENT-2750 Probe 2-3/4" Electric Inline Bowspring Centralizer	2.88	2.75	20.00
LOCTIM	0.00						
UTCTIM	0.00						

Dataset: antelope 33-31\_cbl.db: field/well/CBL/main  
 Total length: 17.81 ft  
 Total weight: 193.60 lb  
 O.D.: 3.25 in

Gamma Ray Calibration Report

Serial Number: FW1212-026  
 Tool Model: 2750 GOB  
 Performed: Mon Oct 19 14:19:51 2020  
  
 Calibrator Value: 637.0 GAPI  
  
 Background Reading: 113.7 cps  
 Calibrator Reading: 1029.1 cps  
  
 Sensitivity: 0.6959 GAPI/cps

Segmented Cement Bond Log Calibration Report

Serial Number: FW1305-096  
 Tool Model: 2750 RBT  
  
 Calibration Casing Diameter: 4.500 in  
 Calibration Depth: 10.000 ft

Master Calibration, performed (Derived):

	Raw (v)		Calibrated (mv)		Results	
	Zero	Cal	Zero	Cal	Gain	Offset
3'	0.000	0.546	0.800	81.196	147.353	0.782
CAL	0.922	0.920				
5'	0.000	0.466	0.800	81.196	172.520	0.795
SUM						
S1	0.000	0.514	0.000	100.000	194.586	-0.024
S2	0.000	0.495	0.000	100.000	201.990	-0.023
S3	0.000	0.526	0.000	100.000	189.990	-0.025
S4	0.000	0.541	0.000	100.000	184.724	-0.021
S5	0.000	0.610	0.000	100.000	163.944	-0.027
S6	0.000	0.636	0.000	100.000	157.239	-0.031
S7	0.000	0.609	0.000	100.000	164.302	-0.023
S8	0.000	0.569	0.000	100.000	175.792	-0.024

Air Zero Calibration, performed Mon Feb 6 12:17:41 2023:

	Raw (v)		Calibrated (v)		Results	
	Zero		Zero		Offset	
3'	0.000		0.000			0.000
5'	0.000		0.000			0.000
SUM						
S1	0.000		0.000			0.000
S2	0.000		0.000			0.000
S3	0.000		0.000			0.000
S4	0.000		0.000			0.000
S5	0.000		0.000			0.000
S6	0.000		0.000			0.000
S7	0.000		0.000			0.000
S8	0.000		0.000			0.000

Temperature Calibration Report

Serial Number: FW1305-096  
Tool Model: 2750 RBT  
Performed: Mon Oct 19 14:19:51 2020

	Reference	Reading
Low Reference:	100.00 degF	109.43 degF
High Reference:	350.00 degF	405.87 degF
Gain:	0.84	
Offset:	7.72	
Delta Spacing	1	



Company	Civitas
Well	ANTELOPE 33-31
Field	Wattenberg
County	Weld
State	Colorado